

Finalmouse Air58 / Ultralight Phantom Replacement Scroll Wheel

User Manual: Finalmouse Air58 / Ultralight Phantom Replacement Scroll Wheel

Brand: Finalmouse (Compatible)

Model: Air58 / Ultralight Phantom Replacement Scroll Wheel

1. INTRODUCTION

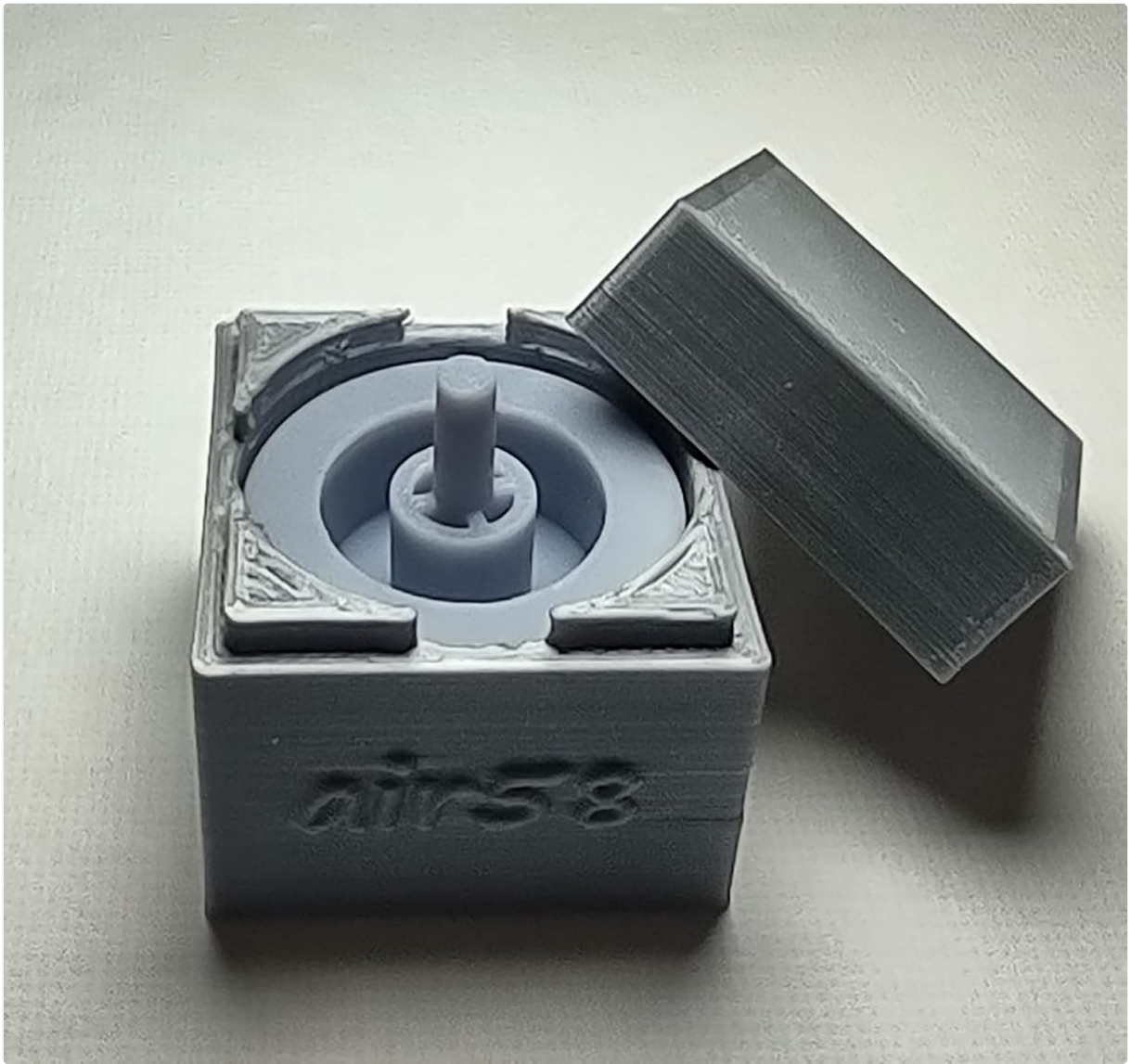
This manual provides comprehensive instructions for the installation, operation, and maintenance of the Finalmouse Air58 / Ultralight Phantom Replacement Scroll Wheel. This component is specifically designed as a direct replacement for damaged or broken scroll wheels in compatible Finalmouse models, ensuring durable strength and proper fitment for restored functionality.

2. PRODUCT OVERVIEW

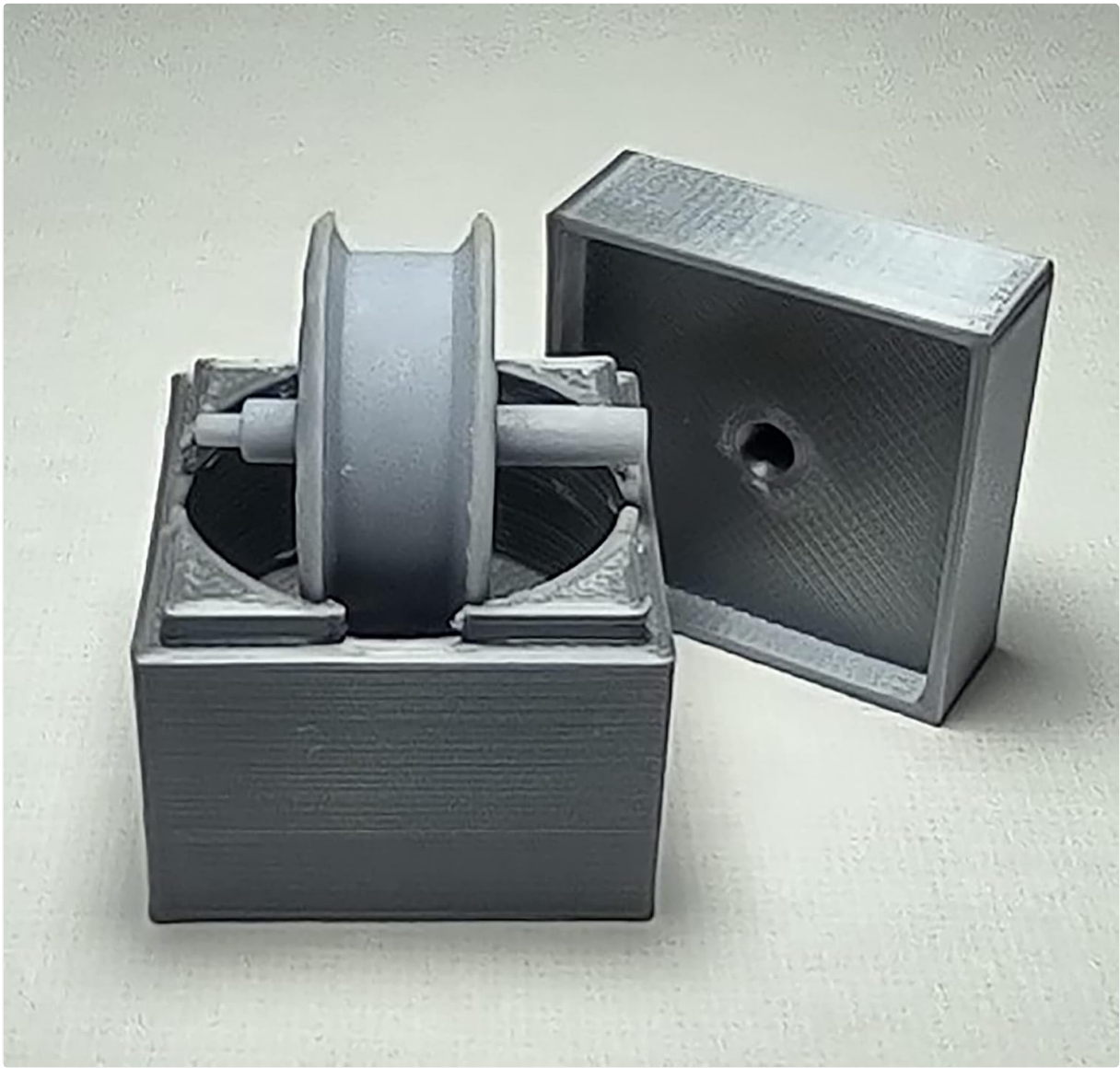
The replacement scroll wheel is a precision-engineered component intended for use with Finalmouse Air58 and Ultralight Phantom gaming mice. Each scroll wheel undergoes rigorous testing to ensure optimal strength and proper fitment before shipment. It is delivered in a custom crush-proof box, designed to protect the component during transit and storage.



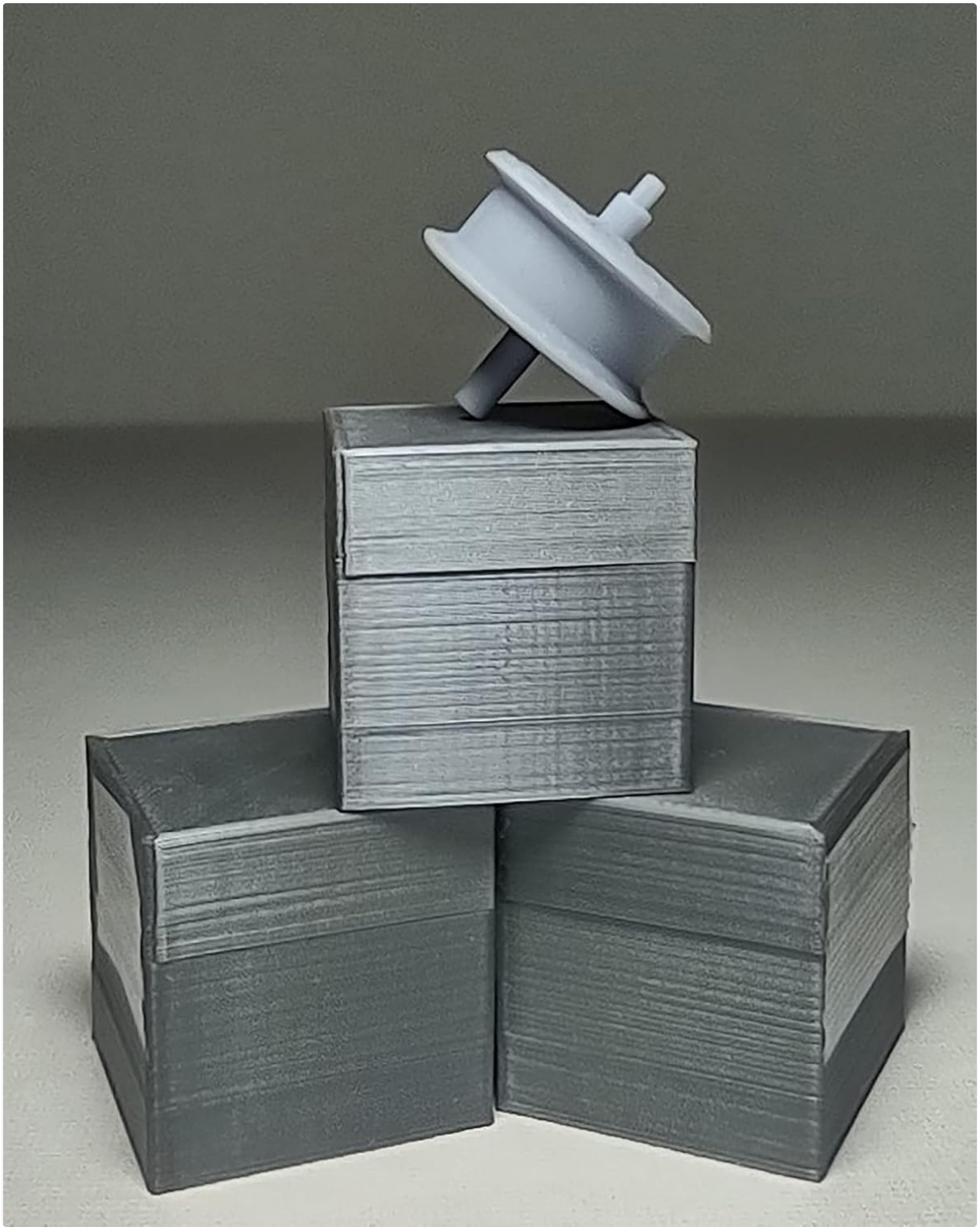
The replacement scroll wheel is securely housed within its custom crush-proof box, designed for optimal protection.



A clear view of the scroll wheel positioned within its protective packaging.



The scroll wheel and its box from a side perspective, highlighting the compact design.



Multiple crush-proof boxes demonstrating the compact and stackable design, with a scroll wheel for scale.



The 'air58' branding is visible on the protective boxes, with a scroll wheel resting on the stack.



A detailed close-up of the replacement scroll wheel, highlighting its design and texture.

3. SETUP AND INSTALLATION

Installation of the replacement scroll wheel requires careful disassembly of your Finalmouse Air58 or Ultralight Phantom mouse. This process typically involves the following general steps:

1. **Mouse Disassembly:** Carefully remove the mouse feet to access the screws securing the mouse casing. Use a precision screwdriver to open the mouse.
2. **Internal Access:** Gently separate the top and bottom halves of the mouse, being mindful of any connected ribbon cables.
3. **Old Scroll Wheel Removal:** Locate the existing scroll wheel assembly. Disconnect any associated cables or clips and carefully remove the damaged or broken scroll wheel.
4. **New Scroll Wheel Installation:** Insert the new replacement scroll wheel into its designated slot. Ensure it is properly seated and any connections are securely reattached.
5. **Reassembly:** Carefully reassemble the mouse by reversing the disassembly steps. Ensure all cables are clear of pinch points and the casing closes securely. Reapply mouse feet if necessary.

Note: This procedure requires a degree of technical skill and precision. It is highly recommended to consult online guides or video tutorials specific to your Finalmouse model for detailed visual instructions. Exercise extreme caution to avoid damaging internal components or cables. Attempting this repair may void your

mouse's original warranty.

4. OPERATING INSTRUCTIONS

Once correctly installed, the replacement scroll wheel operates identically to the original component. It enables vertical scrolling of content on your computer screen and typically functions as a clickable middle button for various software functions.

5. MAINTENANCE

The replacement scroll wheel requires minimal maintenance. To ensure smooth and consistent operation, keep your mouse clean and free of dust, debris, and foreign particles, especially around the scroll wheel mechanism. Avoid exposing the mouse to excessive moisture, liquids, or extreme temperatures, as these can damage internal components.

6. TROUBLESHOOTING

Issue	Possible Cause / Solution
Scroll wheel not functioning after installation	Verify that all internal connections are secure and that the scroll wheel is properly seated in its mechanism. Re-check installation steps.
Scroll click feels stiff	Initial stiffness may be present and typically loosens with regular use. Ensure no obstructions are present.
Intermittent scrolling or erratic behavior	Ensure the mouse is clean and free of dust or debris around the scroll wheel sensor. Re-verify proper installation.
Physical damage to the scroll wheel	If the wheel was damaged during installation or use, it may require replacement. Handle with care during installation.

For persistent issues not resolved by the above steps, it is recommended to consult online resources for mouse repair or seek assistance from a qualified technician.

7. SPECIFICATIONS

- **Product Type:** Replacement Scroll Wheel
- **Compatibility:** Finalmouse Air58, Finalmouse Ultralight Phantom Gaming Mice
- **Features:** Durable strength, proper fitment, designed for gaming mouse applications
- **Packaging:** Custom Crush-Proof Box

8. WARRANTY AND SUPPORT

For any inquiries, technical support, or concerns regarding the Finalmouse Air58 / Ultralight Phantom Replacement Scroll Wheel, please contact the seller directly through the platform where your purchase was made. Refer to your purchase documentation for specific return or replacement policies.

