

Behringer 2600

Behringer 2600 Blue Limited-Edition Analog Semi-modular Synthesizer Instruction Manual

Model: 2600

[Introduction](#)

[Safety Information](#)

[Setup](#)

[Operating Instructions](#)

[Maintenance](#)

[Troubleshooting](#)

[Specifications](#)

[Warranty & Support](#)

1. INTRODUCTION

The Behringer 2600 Blue Limited-Edition is a powerful analog semi-modular synthesizer designed for musicians and sound designers seeking classic analog sounds and extensive patching capabilities. This instrument combines vintage aesthetics with modern reliability, offering a versatile platform for sound creation.

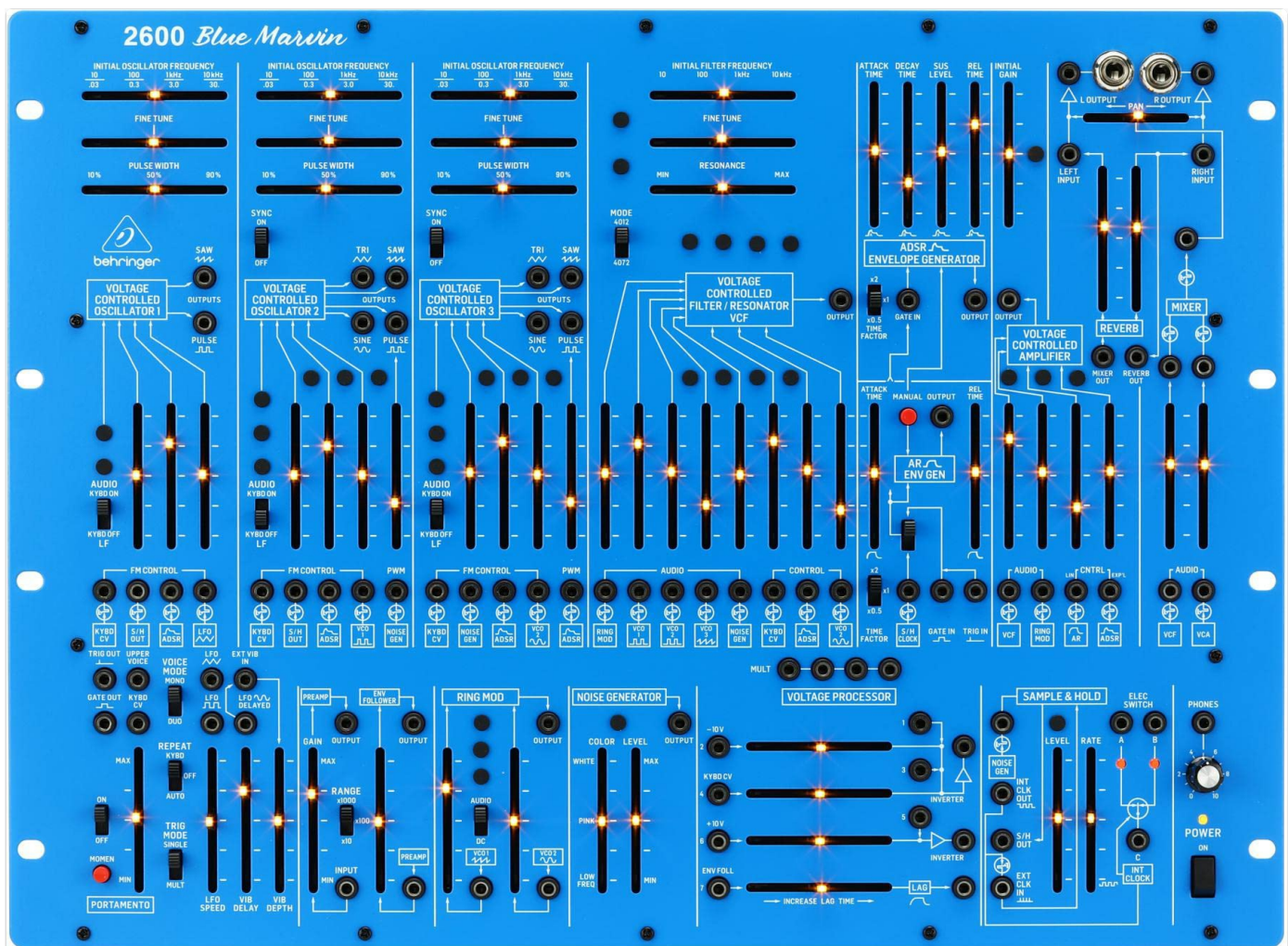


Image: The Behringer 2600 Blue Limited-Edition Analog Semi-modular Synthesizer, showcasing its blue and black design with numerous faders, switches, and patch points.

Key features include 3 Oscillators, a Mechanical Spring Reverb, 2 Envelope Generators, 78 Faders and Switches, and 93 Patch Points for unparalleled sound sculpting and modular integration.

2. SAFETY INFORMATION

Please read and follow all safety instructions to prevent electric shock, fire, or damage to the unit. Keep this manual for future reference.

- **Power Supply:** Use only the specified power adapter. Ensure the voltage matches the requirements of your region.
- **Water and Moisture:** Do not expose the unit to rain, moisture, or operate it in wet conditions. Avoid placing objects filled with liquids on the unit.
- **Ventilation:** Ensure adequate ventilation around the unit. Do not block ventilation openings.
- **Heat:** Keep the unit away from heat sources such as radiators, heat registers, stoves, or other apparatus that produce heat.
- **Cleaning:** Clean only with a dry cloth. Do not use liquid cleaners or aerosol cleaners.
- **Servicing:** Do not attempt to service this product yourself. Refer all servicing to qualified service personnel.
- **Cables:** Protect power cords from being walked on or pinched, particularly at plugs, convenience receptacles, and the point where they exit from the apparatus.

3. SETUP

The Behringer 2600 is a semi-modular synthesizer, meaning it has pre-wired connections but also allows for extensive patching to create unique sound routings. This section guides you through the initial setup.

3.1 Unpacking and Placement

1. Carefully remove the synthesizer from its packaging. Retain all packaging materials for future transport or storage.
2. Place the unit on a stable, flat surface with adequate ventilation.
3. Ensure all faders and switches are in their neutral or off positions before connecting power.

3.2 Power Connection

- Connect the provided power adapter to the DC input jack on the rear panel of the 2600.
- Plug the power adapter into a suitable electrical outlet.
- Turn on the unit using the power switch. The indicator lights should illuminate.

3.3 Audio Connections

- Connect the main audio output (1/4" mono jack) of the 2600 to your mixer, audio interface, or amplifier using a high-quality audio cable.
- Adjust the master volume on your mixer/interface and the 2600 to a low level before playing.

3.4 Modular Integration (Optional)

The 2600 features 93 patch points, allowing integration with other modular synthesis systems (e.g., Eurorack). Use 3.5mm patch cables to connect various modules and expand your sound design possibilities.

Your browser does not support the video tag.

Video: This video demonstrates the modular ecosystem concept, showing how different synthesizer components can be connected and integrated to expand sound capabilities. While featuring an Arturia product, the principles of modular patching are applicable to the Behringer 2600.

4. OPERATING INSTRUCTIONS

The Behringer 2600 offers a hands-on approach to sound synthesis. This section provides an overview of its main components and how to interact with them.

4.1 Oscillators (VCOs)

The 2600 features three Voltage Controlled Oscillators (VCOs) that generate the primary sound waves. Each VCO has controls for frequency, waveform (e.g., sine, triangle, saw, square, pulse), and modulation inputs. Experiment with different waveforms and frequencies to create varied tonal foundations.

4.2 Voltage Controlled Filter (VCF)

The VCF shapes the timbre of the sound by cutting off frequencies. Adjust the **CUTOFF** and **RESONANCE** controls to achieve different filter effects, from subtle warmth to aggressive sweeps.

4.3 Envelope Generators (EGs)

The two Envelope Generators control the amplitude and filter cutoff over time. Adjust **ATTACK**, **DECAY**, **SUSTAIN**, and **RELEASE** (ADSR) parameters to shape the sound's dynamics, from sharp percussive hits to long, evolving pads.

4.4 Low Frequency Oscillators (LFOs)

LFOs generate sub-audio frequencies used for modulation effects like vibrato, tremolo, or filter sweeps. Adjust the LFO

RATE and **WAVEFORM** to add movement and texture to your sounds.

4.5 Patch Points

The 93 patch points allow you to override the internal signal routing and create custom connections. This is where the semi-modular nature truly shines, enabling complex sound design and experimental patching.

4.6 Mechanical Spring Reverb

The built-in Mechanical Spring Reverb adds a classic, organic reverberation effect to your sounds. Adjust the reverb level to control the amount of spatial depth.

Your browser does not support the video tag.

Video: This video showcases the hands-on operation and sound capabilities of a semi-modular analog synthesizer, including real-time sound manipulation and sequencing. While featuring an Arturia MiniBrute 2S, the operational principles are similar to the Behringer 2600.

5. MAINTENANCE

Proper maintenance ensures the longevity and optimal performance of your Behringer 2600.

- **Cleaning:** Use a soft, dry, lint-free cloth to clean the exterior of the synthesizer. Avoid abrasive cleaners or solvents.
- **Dust Protection:** When not in use, cover the synthesizer with a dust cover to prevent dust accumulation, especially on faders and switches.
- **Storage:** Store the unit in a cool, dry place away from direct sunlight and extreme temperatures.
- **Faders and Knobs:** Operate faders and knobs gently. Avoid excessive force, which can cause damage.

6. TROUBLESHOOTING

If you encounter issues with your Behringer 2600, refer to the following common problems and solutions:

Problem	Possible Cause	Solution
No Sound Output	Incorrect audio connections, low volume, power off.	Check all audio cables, ensure master volume is up, verify power is on.
Distorted Sound	Input/output levels too high, faulty cable.	Reduce volume levels on the 2600 and receiving device. Try a different audio cable.
Controls Not Responding	Unit frozen, incorrect patching.	Power cycle the unit. Review your patch cable connections to ensure they are correct.
Spring Reverb Malfunction	Physical damage to springs, loose connections.	<i>Caution:</i> If you hear rattling, the spring unit might be dislodged. Refer to a qualified technician for inspection and repair.

If the problem persists, contact Behringer customer support or a qualified service technician.

7. SPECIFICATIONS

Feature	Detail
Model Name	2600

Feature	Detail
Type	Semi-modular Analog Synthesizer
Oscillators	3
Envelope Generators	2
Faders/Switches	78
Patch Points	93
Reverb Type	Mechanical Spring Reverb
Item Weight	15.9 pounds
Product Dimensions (L x W x H)	24.45 x 18 x 7.6 inches
Body Material	Alloy Steel / Metal
Connector Type	1/4" (6.35mm) mono jack
Color	Blue

8. WARRANTY & SUPPORT

Behringer products are designed to provide reliable performance. For warranty information and technical support, please refer to the official Behringer website or contact your local distributor.

- **Online Support:** Visit www.behringer.com/support for FAQs, manuals, and software downloads.
- **Product Registration:** Register your product online to ensure you receive the latest updates and warranty information.
- **Service:** In case of malfunction, do not attempt to repair the unit yourself. Contact authorized service centers for assistance.

