

[Manuals.plus](#) /

> [FITCAMX](#) /

> FITCAMX 4K Dash Cam User Manual for Mercedes-Benz GLC/C Class (Model 6105)

## FITCAMX 6105

# FITCAMX 4K Dash Cam User Manual

## FOR MERCEDES-BENZ GLC/C CLASS (MODEL 6105)

Model: 6105 | Brand: FITCAMX

### 1. PRODUCT OVERVIEW

---

The FITCAMX 4K Dash Cam, Model 6105, is designed to seamlessly integrate into Mercedes-Benz GLC (W204, W205) and C Class (X253) vehicles, providing an OEM factory look. This dash cam records in Ultra HD 2160P resolution, ensuring clear video evidence. Key features include loop recording, built-in WiFi for easy access via a dedicated app, and a G-Sensor for automatic emergency accident locks. The design prioritizes ease of installation without complex wiring.

### 2. WHAT'S IN THE BOX

---

Upon unboxing your FITCAMX 4K Dash Cam, please verify that all the following components are included:

- 1x FITCAMX 4K Dash Cam (Model 6105)
- 1x Power Cable
- 1x User Manual
- 1x 64GB MicroSD Memory Card
- 1x Removal Pry Tool

### 3. PRODUCT FEATURES

---

- **Integrated OEM Look:** Designed to blend seamlessly with your Mercedes-Benz GLC (W204, W205) or C Class (X253) interior, appearing as a factory-installed component. No visible wires or modifications are required for installation.
- **UHD 2160P Video Quality:** Records video in stunning 4K (2160P) resolution at 30 frames per second, utilizing a Novatek Chip and an f/1.6 large aperture lens. The CMOS Sensor and WDR technology ensure

excellent performance in various lighting conditions, including enhanced night vision.

- **Easy Installation & Built-in WiFi:** The dash cam is designed for straightforward installation. It features built-in WiFi connectivity, allowing you to connect to the FITCAMX app on your smartphone for live video preview, footage download, and settings adjustment.
- **Loop Recording & Emergency Accident Locks:** Continuous loop recording automatically overwrites the oldest footage when the memory card is full. The integrated G-Sensor detects sudden collisions and automatically saves the relevant footage to a protected folder, preventing it from being overwritten. A 64GB MicroSD card is included, and the system supports up to 256GB.
- **Durable Construction:** Constructed from high-density ABS+PC material, the dash cam is built to withstand a wide operating temperature range of -20°C to 85°C (-4°F to 185°F).

## How to distinguish the model by the original cover



Image 3.1: Overview of FITCAMX Dash Cam features.

## 4. INSTALLATION GUIDE

The FITCAMX Dash Cam is designed for a simple, plug-and-play installation process that maintains your vehicle's original aesthetic. No complex wiring or tapping into fuse boxes is typically required.

## 4.1. Identifying Your Vehicle's Cover Model

Before installation, it is crucial to identify the correct model of your vehicle's rearview mirror cover to ensure compatibility. Refer to the image below to match your vehicle's cover with the corresponding model number.



*Image 4.1: Guide to distinguish dash cam models by original rearview mirror cover.*

## 4.2. Installation Steps

Follow these general steps for installation. A detailed video tutorial is available for visual guidance.

1. Carefully remove the original rearview mirror cover using the provided pry tool.
2. Disconnect the existing power connector from the vehicle's wiring harness.
3. Connect the FITCAMX dash cam's power cable to the vehicle's wiring harness.
4. Secure the dash cam unit in place, ensuring it fits snugly and aligns with the original cover's mounting points.
5. Reattach the original rearview mirror cover, ensuring all clips are properly engaged.



Image 4.2: Visual guide for dash cam installation steps.



OEM Style



Easy to Install



UHD 2160P



f/1.6 Aperture



WiFi&APP



Loop Recording



Super Night Vision



G-Sensor

Image 4.3: Before and after installation, highlighting the OEM style.

### 4.3. Installation Video

For a comprehensive visual guide on the installation process, please refer to the official installation video below.

Your browser does not support the video tag.

Video 4.1: Official installation tutorial for FITCAMX Dash Cam in Mercedes-Benz vehicles.

## 5. OPERATING INSTRUCTIONS

The FITCAMX Dash Cam operates automatically once installed and powered. For advanced control and viewing, use the dedicated FITCAMX mobile application.

### 5.1. Automatic Operation

- The dash cam will automatically power on and begin recording when your vehicle's engine starts.
- It will automatically power off when the engine is turned off.

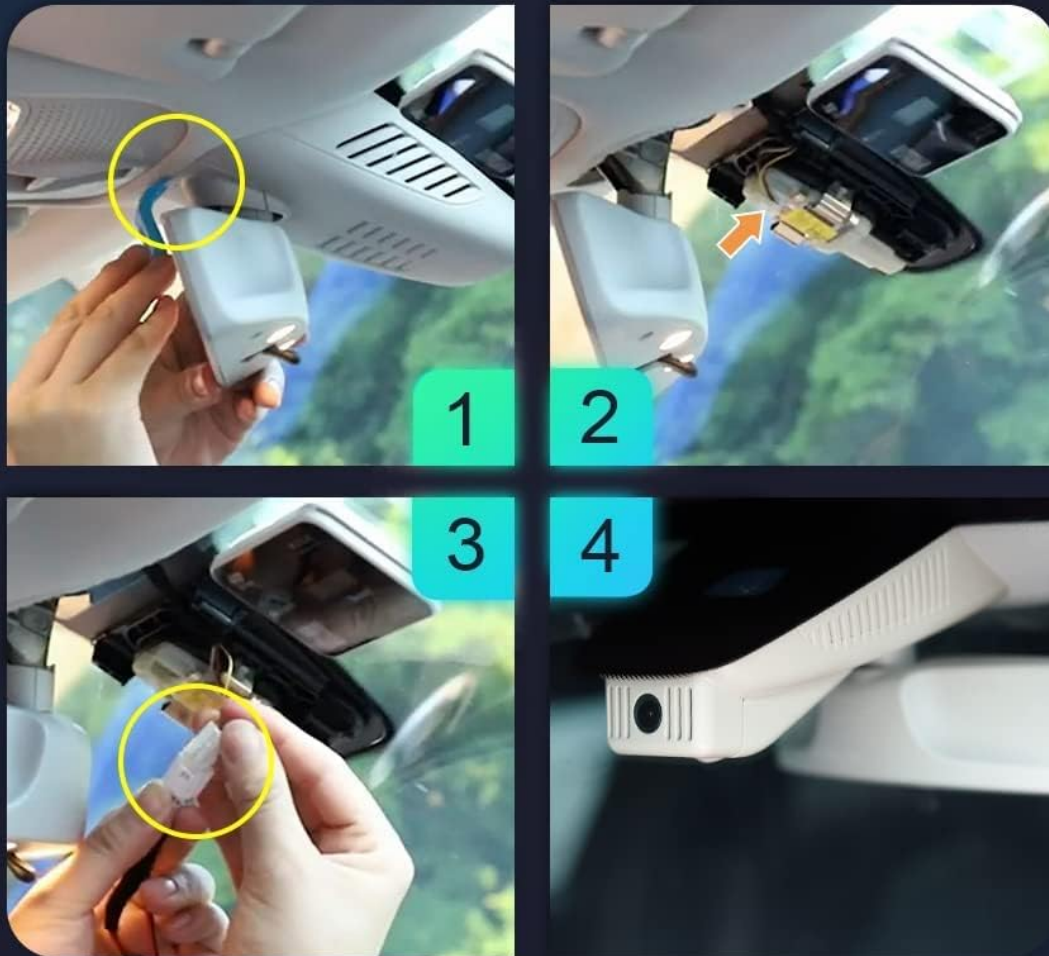
- Loop recording ensures continuous footage by overwriting the oldest files when the memory card is full.
- The G-Sensor automatically locks footage during sudden impacts to protect critical event recordings.

## 5.2. Using the FITCAMX App

The FITCAMX app allows you to manage your dash cam settings and recordings directly from your smartphone.

1. **Download the App:** Search for "FITCAMX" in your smartphone's app store (available on iOS and Android).
2. **Connect to WiFi:**
  - Ensure the dash cam is powered on (vehicle engine running).
  - On your phone, go to Wi-Fi settings and connect to the network starting with "CAR", "LHD", or "CARDV".
  - The default password is **12345678**.
3. **Access Live View:** Open the FITCAMX app. Once connected, you can access a live view of the dash cam's recording. You can switch to full-screen view.
4. **View and Download Recordings:** Navigate to the "Camera File" section within the app to browse recorded videos. You can select and download specific videos to your phone's album.
5. **Adjust Settings:** The app allows you to modify various dash cam settings, including sound recording, video resolution, loop record options, exposure compensation, time watermark, and G-Sensor sensitivity. You can also format the SD card through the app.

# Installation Tutorial



FITCAMX

Image 5.1: FITCAMX App interface for live view and controls.

## 5.3. App Usage Video

Watch the video below for a demonstration of connecting to the app and managing recordings.

Your browser does not support the video tag.

Video 5.2: Guide on connecting to the FITCAMX app and viewing/downloading footage.

## 6. MAINTENANCE

Proper maintenance ensures the longevity and optimal performance of your FITCAMX Dash Cam.

- **SD Card Formatting:** Regularly format the MicroSD card (at least once a month) through the FITCAMX app to prevent data corruption and ensure smooth recording. This will erase all stored data, so back up important files first.
- **Cleaning:** Gently wipe the lens and the dash cam body with a soft, dry cloth. Avoid using abrasive

cleaners or solvents.

- **Operating Temperature:** The dash cam is designed to operate within -20°C to 85°C (-4°F to 185°F). Extreme temperatures outside this range may affect performance or cause damage.

## 7. TROUBLESHOOTING (FAQ)

---

Here are answers to common questions and issues you might encounter:

- **Q: How do I ensure I have the correct model?**

A: Please compare your vehicle's style, year, and rearview mirror cover shape with the product images and descriptions. You can also contact FITCAMX customer service for confirmation by sending pictures of your rearview mirror cover.

- **Q: Can I use CarPlay/Bluetooth while driving?**

A: Yes. While your phone cannot be connected to both CarPlay and the dash cam's WiFi simultaneously, the camera records automatically after the car starts. You do not need to keep the WiFi connected to the camera at all times for it to record.

- **Q: Can I view videos after turning off the car?**

A: No. The built-in WiFi has a limited range. You must download videos to your phone in advance before the engine is off, or while the engine is running and the camera is powered.

- **Q: What if my phone cannot connect to the dash cam's WiFi?**

A: Ensure the engine is on and the dash cam is working. If connection issues persist, send screenshots of your WiFi and app pages to customer support for assistance.

- **Q: Why doesn't my car have parking monitoring? Can I upgrade this function?**

A: Parking monitoring functionality depends on whether your car's power plug provides continuous electricity, which is determined by the car manufacturer. If continuous power is available, parking mode will function. Otherwise, it requires an extra harness cable to enable. Note that parking mode does not record continuously 24/7; it typically activates and records only in the event of a serious collision.

- **Q: Why does the dash cam get hot?**

A: It is normal for the FITCAMX camera to generate heat during operation. It is designed to work normally within -20°C to 85°C (-4°F to 185°F). The compact space around the camera and its proximity to the windshield (especially under direct sunlight) can contribute to higher temperatures.

- **Q: I have the 4K single front version. Can I add a rear camera separately?**

A: No. The single camera and dual camera versions have different PCB boards. If you wish to have a rear camera, you would need to replace the entire set with a dual-camera version.

## 8. SPECIFICATIONS

---

<b>Brand</b>	FITCAMX
<b>Model Name</b>	Model 6105
<b>Vehicle Service Type</b>	Benz GLC & C Class (W204, W205, X253)
<b>Connectivity Technology</b>	Powerline, Wi-Fi

<b>Special Features</b>	FITCAMX APP, OEM Style, Loop Recording, G-Sensor, Night Vision
<b>Video Capture Resolution</b>	Front 2160P Only
<b>Included Components</b>	1* 4K Dash Cam, Cable, User Manual, 64GB Memory Card, Removal Pry Tool
<b>Mounting Type</b>	Ceiling
<b>Field Of View</b>	170 Degrees
<b>Control Method</b>	App
<b>Optical Sensor Technology</b>	CMOS
<b>Flash Memory Type</b>	MicroSD
<b>Maximum Aperture</b>	f/1.6
<b>Auto Part Position</b>	Front
<b>Are Batteries Included</b>	Yes
<b>Supported Standards</b>	MP4, MOV
<b>Memory Slots Available</b>	1
<b>Battery Cell Type</b>	Lithium
<b>Frame Rate</b>	30 Frames Per Second
<b>Included Memory Card Size</b>	64 GB
<b>Flash Memory Supported Size Maximum</b>	128 GB
<b>Item Weight</b>	1.5 Pounds

## 9. WARRANTY AND SUPPORT

---

Your FITCAMX Dash Cam comes with a commitment to quality and customer satisfaction.

- **Warranty:** The product includes a 1-year warranty from the date of purchase.
- **Technical Support:** FITCAMX offers prompt technical support for any issues or questions you may have regarding the product. Please do not hesitate to reach out to customer service for assistance.
- **Customer Service:** Access customer service options directly through the FITCAMX mobile application under the 'More' or 'App Settings' section.

