

## Driini 015

# Driini Modern Pendulum Wall Clock

## MODEL 015 - INSTRUCTION MANUAL

[Included](#)   [Setup](#)   [Operation](#)   [Maintenance](#)   [Introduction](#)   [What's](#)   [Troubleshooting](#)   [Specifications](#)   [Warranty & Support](#)

### 1. Introduction

---

The Driini Modern Pendulum Wall Clock (Model 015) is designed to enhance your living space with its minimalist aesthetic and functional design. This battery-operated clock features a silent, non-ticking quartz movement and a smoothly swinging pendulum, making it suitable for quiet environments such as bedrooms, offices, or living rooms. It includes interchangeable pendulum options to match your decor.



Figure 1: Driini Modern Pendulum Wall Clock (Black and Gold variant).

## 2. What's Included

Please check the package contents to ensure all items are present and undamaged:

- 1 x Driini Modern Pendulum Wall Clock Unit
- 1 x Gold Pendulum (pre-attached or separate)
- 1 x Black Pendulum (interchangeable option)
- 1 x Instruction Manual (this document)

**Note:** 2 AA batteries are required for operation and are **not included** in the package. Please use brand-new, alkaline batteries for optimal performance.



Figure 2: The clock includes both gold and black pendulum options for customization.

### 3. Setup Instructions

---

Follow these steps to set up your Driini Modern Pendulum Wall Clock:

1. **Prepare for Hanging:** If the clock has a hanger clip, gently unclip it to prepare for mounting.
2. **Attach Pendulum:** Carefully attach your preferred pendulum (gold or black) to the hook located at the bottom of the clock mechanism. Ensure it hangs freely.
3. **Insert Batteries:** Open the battery compartment cover on the back of the clock. Insert two (2) AA alkaline batteries, ensuring correct polarity (+/-). Close the battery compartment.
4. **Set Time:** Locate the time-setting dial on the back of the clock mechanism. Gently turn the dial to adjust the hour and minute hands to the current time.
5. **Mounting:** The clock is designed for wall mounting. Use a suitable wall anchor and screw (not included) appropriate for your wall type. Hang the clock securely using the integrated hanger on the back. Ensure the clock is level for proper pendulum swing.

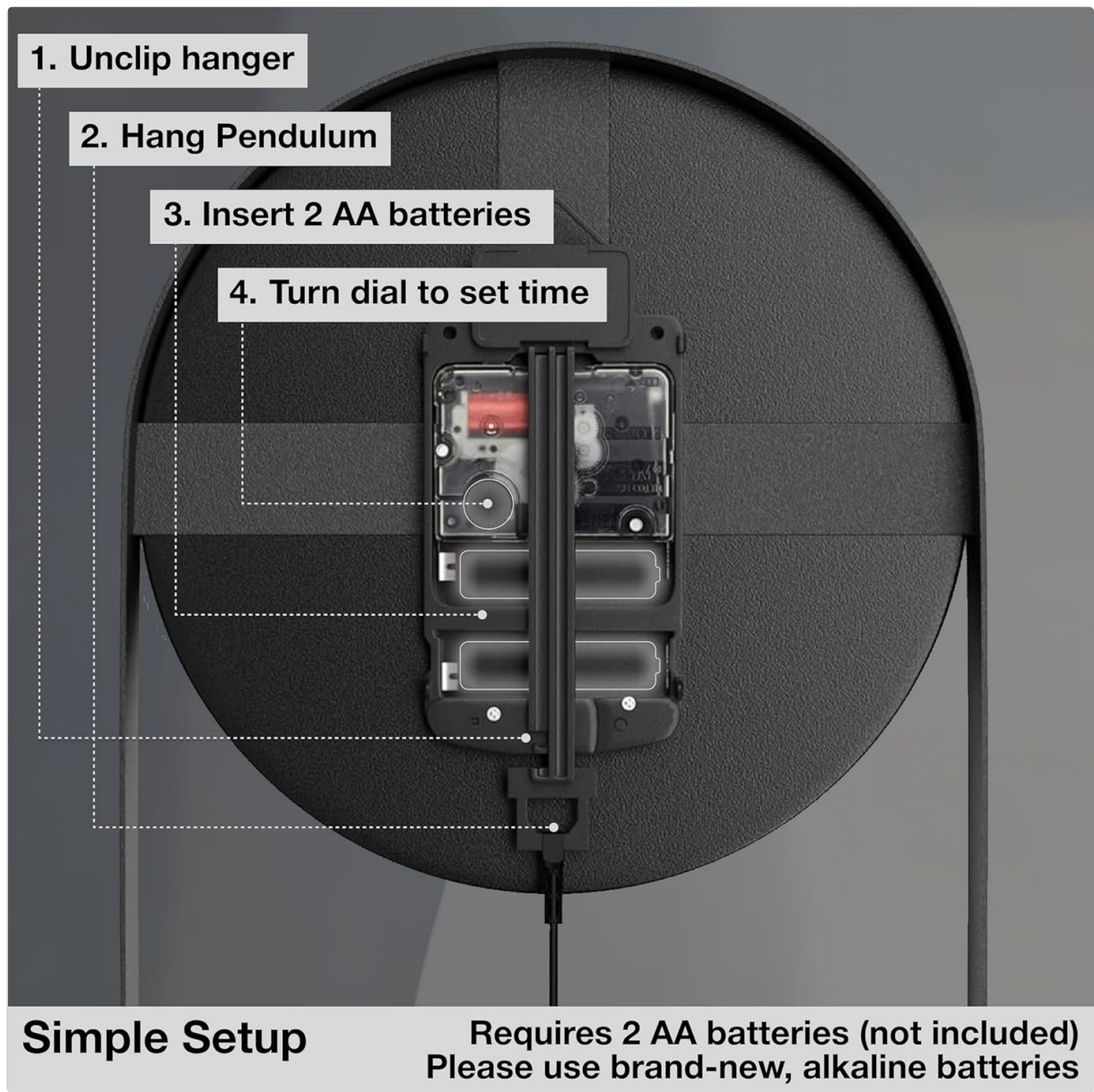


Figure 3: Simple setup guide for the clock, including battery placement and time adjustment.

## 4. Operating Instructions

Your Driini Modern Pendulum Wall Clock is designed for straightforward operation:

- **Silent Movement:** The clock features an upgraded silent, non-ticking analog quartz movement. This ensures a quiet environment, free from distracting ticking noises.
- **Pendulum Function:** Once batteries are installed and the clock is hung, the pendulum will begin to swing smoothly. This continuous motion is a decorative feature and does not affect timekeeping accuracy.
- **Time Adjustment:** To adjust the time, gently turn the dial on the back of the clock mechanism. Avoid moving the clock hands directly to prevent damage.



Figure 4: The clock's pendulum in motion, demonstrating its smooth and continuous swing.

## 5. Maintenance

---

To ensure the longevity and optimal performance of your clock, follow these maintenance guidelines:

- **Cleaning:** Wipe the clock's surface with a soft, dry cloth. Avoid using abrasive cleaners, solvents, or chemical sprays, as these may damage the finish.
- **Battery Replacement:** Replace batteries annually or when the clock begins to lose time or the pendulum stops swinging. Always replace both AA batteries at the same time with new alkaline batteries.
- **Environment:** Keep the clock away from direct sunlight, extreme temperatures, and high humidity to prevent damage to the mechanism and materials.
- **Handling:** Handle the clock with care. Avoid dropping it or subjecting it to strong impacts.

## 6. Troubleshooting

---

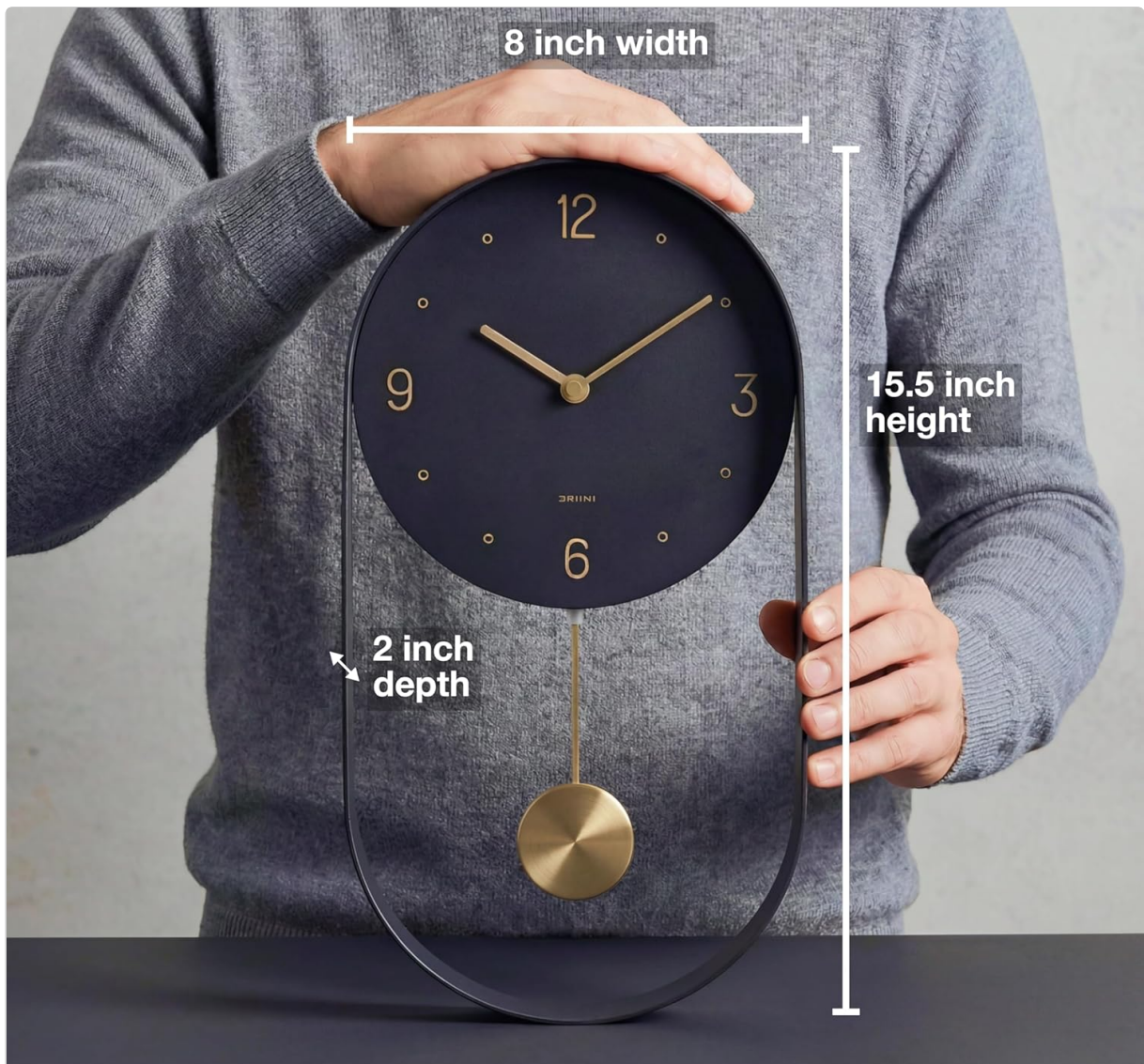
If you encounter any issues with your Driini Modern Pendulum Wall Clock, refer to the following common problems and solutions:

Problem	Possible Cause	Solution
Clock is not running or losing time.	Dead or weak batteries.	Replace both AA batteries with new alkaline batteries.
Pendulum is not swinging.	Pendulum not properly attached or obstructed.	Ensure the pendulum is securely hooked and swings freely without touching the frame or wall. Check battery power.
Time is inaccurate after setting.	Incorrect time setting or weak batteries.	Re-set the time using the dial on the back. If the problem persists, replace batteries.
Clock hands are stuck.	Hands are bent or obstructed.	Gently check if the hands are touching each other or the clock face. Carefully adjust if necessary.

## 7. Product Specifications

Below are the technical specifications for the Driini Modern Pendulum Wall Clock (Model 015):

Feature	Detail
Brand	Driini
Model Number	015
Color	Black
Display Type	Analog
Style	Minimalist Scandinavian design with modern elegance
Special Feature	Silent quartz movement, dual pendulum options (black and gold), battery-powered
Product Dimensions (W x H)	8"W x 15.5"H
Power Source	2 AA batteries (not included)
Room Type	Bathroom, Bedroom, Home Office, Living Room
Shape	Oval
Indoor/Outdoor Usage	Indoor
Mounting Type	Wall Mount
Watch Movement	Quartz
Item Weight	2.2 Pounds
Material Type	Premium wrought iron construction
GTIN / UPC	195893665655



**Fits in Anywhere**

**Dimensions: 15.5" x 8" x 2"**

Figure 5: Dimensions of the clock: 8 inches width, 15.5 inches height, 2 inches depth.

## 8. Warranty & Support

**Warranty:** The Driini Modern Pendulum Wall Clock comes with a 2-year extended manufacturer warranty, ensuring lasting reliability and peace of mind. This warranty covers defects in materials and workmanship under normal use.

**Customer Support:** For any questions, concerns, or warranty claims, please contact Driini customer support through the retailer where the product was purchased or visit the official Driini website for contact information. Please have your model number (015) and proof of purchase ready.