

Keter 9636100

Keter Detroit Multipurpose Storage Cabinet User Manual

Model: 9636100 | Brand: Keter

INTRODUCTION

This manual provides essential information for the safe and efficient use of your Keter Detroit Multipurpose Storage Cabinet. Please read these instructions carefully before assembly and operation, and retain them for future reference.

SAFETY INFORMATION

- Ensure all components are present and undamaged before assembly. Do not attempt to assemble if parts are missing or broken.
- Assemble the cabinet on a flat, stable surface to prevent tipping.
- Do not overload shelves. Adhere to the specified weight capacities: 10 kg (22 lbs) for adjustable shelves and 15 kg (33 lbs) for the fixed shelf.
- Keep small parts away from children during assembly.
- For stability, it is recommended to secure the cabinet to a wall, especially if placed in areas with high traffic or uneven surfaces. Mounting hardware is not typically included and may need to be purchased separately based on wall type.

PACKAGE CONTENTS

Verify that all the following components are included in your package:

- Cabinet panels (sides, top, bottom, back)
- Adjustable shelves (3 units)
- Fixed shelf (1 unit)
- Door panels (2 units)
- Handles and associated hardware

- Assembly fasteners and connectors
- Instruction manual



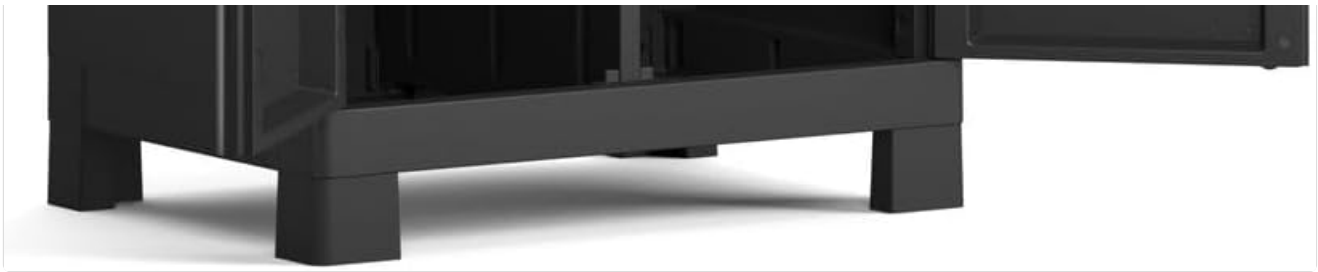


Figure 1: Keter Detroit Multipurpose Storage Cabinet. This image shows the fully assembled cabinet with its doors open, revealing the internal shelving configuration, including three adjustable shelves and one fixed shelf, along with a tall storage section.

SETUP AND ASSEMBLY

Assembly is required for this product. Follow the steps below carefully. It is recommended to have two people for assembly.

1. **Prepare the Area:** Clear a spacious, flat, and clean area for assembly.
2. **Identify Components:** Lay out all parts and identify them using the provided parts list in the separate assembly diagram (if applicable).
3. **Assemble Side Panels:** Attach the base and top panels to the side panels using the provided fasteners. Ensure they are securely locked into place.
4. **Insert Back Panel:** Slide the back panel into the grooves of the side panels. Ensure it is fully seated.
5. **Install Fixed Shelf:** Secure the fixed shelf into its designated position. This shelf provides structural integrity.
6. **Install Adjustable Shelves:** Place the adjustable shelves at your desired height. The cabinet features multiple slots for flexible shelf placement. Each adjustable shelf can hold up to 10 kg.
7. **Attach Doors:** Mount the door panels to the cabinet frame using the hinge mechanisms. Ensure the doors swing freely and close properly.
8. **Install Handles:** Attach the handles to the door panels using the provided screws.



Figure 2: Keter Detroit Multipurpose Storage Cabinet integrated into a garage storage system. This image demonstrates how multiple Keter Detroit cabinets can be arranged together to form a comprehensive storage solution in a garage or workshop environment.



Figure 3: Close-up view of the Keter Detroit Multipurpose Storage Cabinet handles. The image highlights the design and material of the cabinet's handles, which are typically made of durable plastic with a metallic finish for ergonomic grip and aesthetic appeal.

OPERATING INSTRUCTIONS

The Keter Detroit Multipurpose Storage Cabinet is designed for versatile storage.

- **Adjusting Shelves:** To adjust the height of the three adjustable shelves, simply lift the shelf, remove the support pegs from their current slots, reposition them to the desired height, and then reinsert the shelf. Ensure all four support pegs are securely in place before loading the shelf.
- **Tall Item Storage:** Utilize the dedicated empty section for storing taller items such as brooms, mops, or long tools.
- **Door Operation:** Open and close the cabinet doors by gently pulling or pushing the handles. Ensure doors are fully closed to protect contents from dust and moisture.



Figure 4: Close-up of a shelf within the Keter Detroit Multipurpose Storage Cabinet, indicating a 15 kg weight capacity. This image specifically shows the fixed shelf, highlighting its robust design and the maximum weight it can safely support.

MAINTENANCE

- **Cleaning:** Wipe the cabinet surfaces with a damp cloth and mild soap. Avoid abrasive cleaners or solvents that could damage the plastic.
- **Inspection:** Periodically check all fasteners and connections to ensure they remain tight. Re-tighten if necessary.
- **Storage Environment:** While durable, prolonged exposure to extreme temperatures or direct sunlight may affect the plastic over time. Store in a sheltered area if possible.

TROUBLESHOOTING

| Problem | Possible Cause | Solution |
|--------------------------------|---|--|
| Cabinet is wobbly or unstable. | Uneven assembly surface; loose fasteners; overloaded shelves. | Ensure assembly on a flat surface. Check and tighten all fasteners. Redistribute weight evenly on shelves and do not exceed capacity. Consider securing to a wall. |
| Doors do not close properly. | Misaligned hinges; obstruction; cabinet not level. | Check hinge alignment and adjust if necessary. Remove any obstructions. Ensure the cabinet is on a level surface. |
| Shelves sag or bow. | Overloaded shelf. | Reduce the weight on the shelf. Ensure weight is distributed evenly. Adhere to the maximum weight capacities. |

SPECIFICATIONS

| | |
|--------------------------------|---|
| Brand | Keter |
| Model Number | 9636100 |
| Color | Black |
| Material | Plastic |
| Product Dimensions (D x W x H) | 17.72"D x 25.59"W x 71.65"H (45cm D x 65cm W x 182cm H) |
| Item Weight | 33 pounds (15 kg) |
| Number of Shelves | 4 (3 adjustable, 1 fixed) |
| Adjustable Shelf Capacity | 10 kg (22 lbs) per shelf |
| Fixed Shelf Capacity | 15 kg (33 lbs) |
| Assembly Required | Yes |

Detroit_Multipurpose Cabinet



Figure 5: Keter Detroit Multipurpose Storage Cabinet with key dimensions. This diagram illustrates the height (H182cm), depth (D45cm), and width (W65cm) of the cabinet, providing a clear visual reference for its size.

WARRANTY INFORMATION

Keter products are manufactured to the highest quality standards. For specific warranty terms and conditions, please refer to the warranty card included with your product or visit the official Keter website. Please retain your proof of purchase for any warranty claims.

CUSTOMER SUPPORT

If you have any questions, require assistance with assembly, or need to report missing/damaged parts, please contact Keter customer support:

- **Website:** www.keter.com (Check for local contact information)
- **Online Support:** Refer to the "Contact Us" section on the Keter website for FAQs and support forms.

