



[Manuals.plus](#) /

› [FEELWORLD](#) /

› FEELWORLD T7PLUS 7-Inch On-Camera Field Monitor User Manual

FEELWORLD T7PLUS

FEELWORLD T7PLUS 7-Inch On-Camera Field Monitor User Manual

Model: T7PLUS

1. INTRODUCTION

Thank you for choosing the FEELWORLD T7PLUS 7-inch On-Camera Field Monitor. This manual provides detailed instructions for the proper setup, operation, and maintenance of your device. Please read this manual thoroughly before using the monitor to ensure optimal performance and to prevent damage.

The FEELWORLD T7PLUS is an advanced 7-inch field monitor designed for professional videographers and photographers. It features a 1920x1200 resolution IPS display, 4K HDMI input/output, and a robust metal casing. Key functionalities include custom 3D LUT support, waveform, vector scope, and various professional video assist features to enhance your shooting workflow.

ÉCRAN FHD DE 7 POUCES

Des images claires et massives offrent une expérience visuelle idéale.

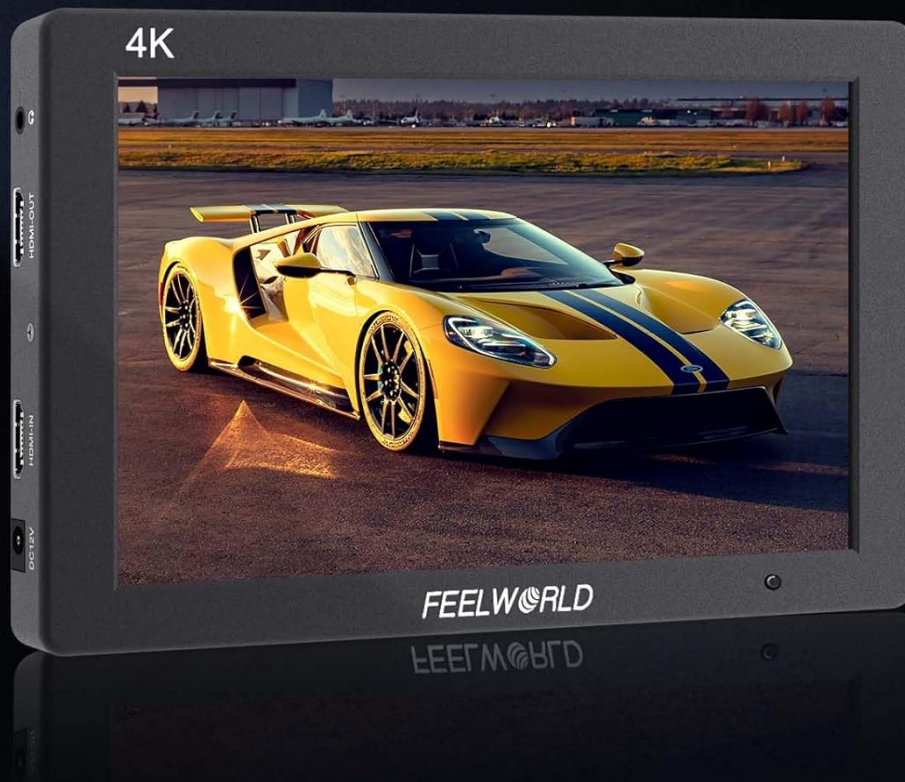


Image: The FEELWORLD T7PLUS monitor displaying a high-resolution image, highlighting its compact design and clear display.

2. KEY FEATURES

- **7-inch Full HD IPS Display:** Features a 1920x1200 resolution, 450 cd/m² brightness, and 1200:1 contrast ratio for clear and accurate image monitoring.
- **Professional Video Assist Functions:** Includes 3D LUT, Waveform, Vector Scope, Histogram, Peaking Focus Assist, False Color, Zebra Exposure, Nine Grid, Zoom-in, Embedded Audio, Anamorphic Mode, Image Flip, and Check Field.
- **Custom 3D LUT Support:** Allows users to load up to 32 custom 3D LUTs via USB for real-time color calibration and workflow optimization.
- **4K HDMI Input and Output:** Supports 4K@30Hz HDMI signals, enabling synchronous monitoring and output to other devices.
- **Durable Metal Casing:** Ultra-thin 18mm design with a robust metal shell for enhanced protection and portability (320g weight).
- **Flexible Power System:** Compatible with F970 battery plates (standard) and optional D28S/D54, LP-E6, U60

battery plates. Can also be powered by an optional DC 12V adapter.

- **Customizable Shortcut Buttons:** Four user-definable F1-F4 shortcut buttons for quick access to frequently used functions.
- **Multi-language Support:** The T7PLUS supports 11 languages, including English, French, German, Spanish, Japanese, Chinese, Traditional Chinese, Portuguese, Korean, Russian, and Dutch.

3. PACKAGE CONTENTS

Please check the package contents upon unboxing to ensure all items are present:

- 1 × FEELWORLD T7PLUS Monitor
- 1 × Mini HDMI Cable
- 1 × Sunshade
- 1 × Hot Shoe Mount
- 1 × F970 Battery Plate (pre-installed)
- 1 × User Manual
- 1 × USB Adapter Cable (for LUT loading)
- 1 × Storage Bag (optional, not always included)



LISTE DES COLIS



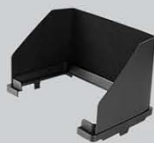
Monitor



câble mini HDMI



câble mini HDMI



Pare-soleil



Tête d'escargot



Plaque de batterie F970



Instructions

Image: An illustration of the FEELWORLD T7PLUS package contents, including the monitor, mini HDMI cable, sunshade, hot shoe mount, F970 battery plate, and user manual.

4. SETUP

4.1 Mounting the Monitor

1. Attach the hot shoe mount to the bottom of the monitor using the screw thread.
2. Secure the hot shoe mount to your camera's hot shoe or a compatible rig.
3. Adjust the monitor's angle for optimal viewing. The hot shoe mount typically allows for 360-degree rotation and 180-degree tilt.

LE PAQUET COMPREND



1× Moniteur T7 PLUS



1× Pare-soleil



1× Câble Mini HDMI



1× Câble adaptateur USB



1× Mini sabot de montage



1× Plaque de batterie F970



1× Manuel d'utilisation



1× Batterie



1× Sac

Image: The FEELWORLD T7PLUS monitor mounted on a camera, illustrating its use in a typical shooting setup.

4.2 Powering the Monitor

The T7PLUS offers flexible power options:

- **NP-F Battery:** The monitor comes with a standard F970 battery plate. Insert a compatible NP-F series battery (F970, F960, F950, F930, F770, F750, F730, F570, F550, F530 series) into the battery slot. Ensure the battery is fully charged.
- **DC 12V Adapter:** Connect an optional DC 12V/1.5A power adapter to the DC IN port on the side of the monitor.

Note: Batteries and DC power adapters are typically sold separately and are not included in the standard package.

ALIMENTATION ÉLECTRIQUE FLEXIBLE

① NP-F

(batterie compatible:
F970 F960 F950 F930
F770 F750 F730 F570
F550 F530 series)



② DC 12V

alimentation électrique (for 12V/1.5A
adapter)

Image: A diagram illustrating the flexible power options for the FEELWORLD T7PLUS, including the NP-F battery plate and the DC 12V input port.

4.3 Connecting to a Camera (HDMI)

The T7PLUS supports 4K HDMI input and output.

1. Connect one end of the provided Mini HDMI cable to the HDMI OUT port of your camera.
2. Connect the other end of the Mini HDMI cable to the HDMI IN port on the side of the T7PLUS monitor.
3. If you need to output the signal to another monitor, connect an HDMI cable from the HDMI OUT port of the T7PLUS to the input of the secondary monitor.



Image: A visual representation of the 4K HDMI input and output ports on the FEELWORLD T7PLUS, demonstrating connectivity to a camera and a larger display.

5. OPERATING THE MONITOR

5.1 Power On/Off

Press and hold the power button located on the top or side of the monitor to turn it on or off.

5.2 Menu Navigation and Shortcut Buttons

The T7PLUS features an intuitive menu system accessible via buttons on the top of the monitor. It also includes four customizable shortcut buttons (F1-F4) for quick access to frequently used functions.

- Use the menu buttons to navigate through settings such as image adjustments, assist functions, and system settings.
- To customize F1-F4 buttons: Enter the main menu, navigate to "User Option" or "Function Settings," and assign desired functions (e.g., Peaking, False Color, LUTs) to each button.

MENU DE L'INTERFACE UTILISATEUR + BOUTONS DE RACCOURCI

4 touches de raccourci personnalisées (F1~F4), permettant de définir des fonctions de raccourci en fonction de vos habitudes personnelles



Image: The user interface menu of the FEELWORLD T7PLUS, demonstrating the navigation options and the location of the F1-F4 shortcut buttons.

5.3 Using Professional Video Assist Functions

The T7PLUS integrates a suite of tools to aid in precise exposure, focus, and color management. These can be accessed via the main menu or assigned to shortcut buttons.

- **3D LUT:** Load custom LUTs to preview your footage with desired color grades. Connect a USB drive with .cube LUT files to the monitor's USB port, then navigate to the LUT menu to import and apply them. Up to 32 user LUTs can be stored.
- **Waveform:** Monitor luminance and chrominance levels across the image. This helps in achieving correct exposure and color balance.
- **Vector Scope:** Analyze the color saturation and hue of your video signal.
- **Peaking Focus Assist:** Highlights sharp edges in red, green, or blue to help achieve precise focus.
- **False Color:** Displays different exposure levels as distinct color overlays, assisting in setting optimal exposure.
- **Zebra Exposure:** Indicates overexposed areas with zebra stripes.

- **Histogram:** Provides a graphical representation of the tonal distribution of your image.
- **Nine Grid:** Overlays a 3x3 grid for composition assistance.
- **Zoom-in:** Magnifies a portion of the image for critical focus checking.
- **Anamorphic Mode:** De-squeezes anamorphic footage for proper viewing.
- **Image Flip:** Flips the image horizontally or vertically, useful for various mounting configurations.
- **Check Field:** Displays only red, green, blue, or mono channels for color calibration.



Image: A visual overview of the professional video assistance features available on the FEELWORLD T7PLUS monitor, including 3D LUT, Waveform, Peaking Focus, and False Color.

CHARGER DES LUTS 3D PERSONNALISÉES

Les fichiers LUT peuvent être placés dans le répertoire racine d'une clé USB et importés via une connexion USB (32 tables LUT utilisateur peuvent être stockées simultanément) pour une commutation et une comparaison rapides.



Image: The FEELWORLD T7PLUS demonstrating the process of loading custom 3D LUTs via USB, with a split screen showing the "Before" and "After" application of a LUT.



SURVEILLANCE DE LA FORME D'ONDE AU NIVEAU DE LA RADIODIFFUSION

Fonctions de forme d'onde intégrées, les fonctions peuvent être activées individuellement ou tous les modes de forme d'onde peuvent être activés à l'aide d'une seule touche.



Vectorscope

Brightness Histogram

YUV Parade

Y Parade

Image: The FEELWORLD T7PLUS displaying broadcast-level waveform monitoring functions, including Vectorscope, Brightness Histogram, YUV Parade, and Y Parade.

5.4 Language Settings

To change the display language, navigate to the "System" menu and select "Language." Choose your preferred language from the available options.

6. MAINTENANCE

- **Cleaning:** Use a soft, dry cloth to clean the monitor's screen and body. For stubborn smudges, a slightly damp cloth with a mild cleaning solution designed for electronics can be used, but avoid direct spraying.
- **Storage:** When not in use, store the monitor in a cool, dry place, away from direct sunlight and extreme temperatures. Use the provided storage bag for protection.
- **Battery Care:** If using batteries, ensure they are charged regularly and stored properly. Remove batteries if the monitor will not be used for an extended period.
- **Firmware Updates:** Check the FEELWORLD official website periodically for any available firmware updates to ensure your monitor has the latest features and bug fixes.

7. TROUBLESHOOTING

Problem	Possible Cause	Solution
Monitor does not power on.	Low or dead battery; power adapter not connected or faulty.	Ensure battery is charged or replace it. Check power adapter connection and functionality.
No signal on screen.	HDMI cable loose or faulty; incorrect input selected; camera not outputting signal.	Check HDMI cable connections. Ensure the correct input source is selected on the monitor. Verify camera's HDMI output settings.
Image is distorted or colors are off.	Incorrect color settings; faulty HDMI cable; monitor settings misconfigured.	Reset monitor to factory settings. Check HDMI cable. Adjust color settings in the menu.
Buttons are unresponsive.	Temporary software glitch; physical damage.	Power cycle the monitor. If the problem persists, contact customer support.

8. SPECIFICATIONS

Feature	Detail
Brand	FEELWORLD
Model	T7PLUS-OF-EU
Screen Size	7 inches
Resolution	1920x1200
Brightness	450 cd/m ²
Contrast Ratio	1200:1
Pixel Density	323 PPI
Viewing Angle	160° (IPS)
HDMI Input/Output	4K@30Hz (3840x2160p, 4096x2160p)
Power Input	DC 12V/1.5A or NP-F Battery Plate
Dimensions (L x W x H)	22.5 x 16.2 x 8.1 cm (approx. 8.86 x 6.38 x 3.19 inches)
Weight	930 grams (approx. 2.05 lbs)
Casing Material	Metal

9. WARRANTY AND SUPPORT

The FEELWORLD T7PLUS monitor comes with a **1-year manufacturer's warranty**. This warranty covers defects in materials and workmanship under normal use. Please retain your proof of purchase for warranty claims. For technical support, troubleshooting assistance, or warranty service, please contact FEELWORLD customer

support through their official website or the retailer where you purchased the product.

Note: Availability of spare parts and software updates may vary. Please refer to the manufacturer's official channels for the most current information.