

## d'aplomb B09MR16H5F

# d'aplomb Medium Himalayan Salt Lamp Instruction Manual

Model: B09MR16H5F

## 1. PRODUCT OVERVIEW

The d'aplomb Himalayan Salt Lamp is crafted from authentic crystal rock salt sourced from the Himalayan Mountains, formed over 250 million years. Each lamp is hand-carved, resulting in a unique shape, size, and color variation, typically measuring approximately 6-8 inches tall and weighing 5-7 lbs.

This lamp features a sturdy wooden base and includes a UL-Listed electrical set with a dimmer switch. Two 15-watt bulbs are provided. The dimmer switch allows for adjustable brightness, creating a peaceful and soothing ambiance suitable for various indoor settings such as bedrooms, offices, dorm rooms, yoga studios, or living areas.

The natural properties of the salt lamp are believed to contribute to a refreshed environment and a calming atmosphere, beneficial for relaxation, meditation, and improving sleep quality.

## 2. SETUP INSTRUCTIONS

- Unpack Components:** Carefully remove the salt lamp, wooden base, electrical cord with dimmer switch, and two 15-watt bulbs from the packaging. The bulbs are typically in a separate small box.
- Insert Bulb:** Gently insert one of the provided 15-watt bulbs into the bulb holder located within the wooden base. Ensure the bulb is securely seated. *Do not use a bulb that exceeds 15 watts.*
- Attach Salt Crystal:** Place the hand-carved salt crystal onto the wooden base, ensuring it sits stably and centrally over the bulb holder. The butterfly clip and stopper mechanism (part of the UL-Recognized dimmer switch set) helps secure the bulb within the salt crystal.
- Position the Lamp:** Place the assembled salt lamp on a flat, stable surface in your desired location. Ensure there is adequate space around the lamp and that it is not near sources of excessive moisture.
- Connect to Power:** Plug the UL-Listed electrical cord into a standard electrical outlet.

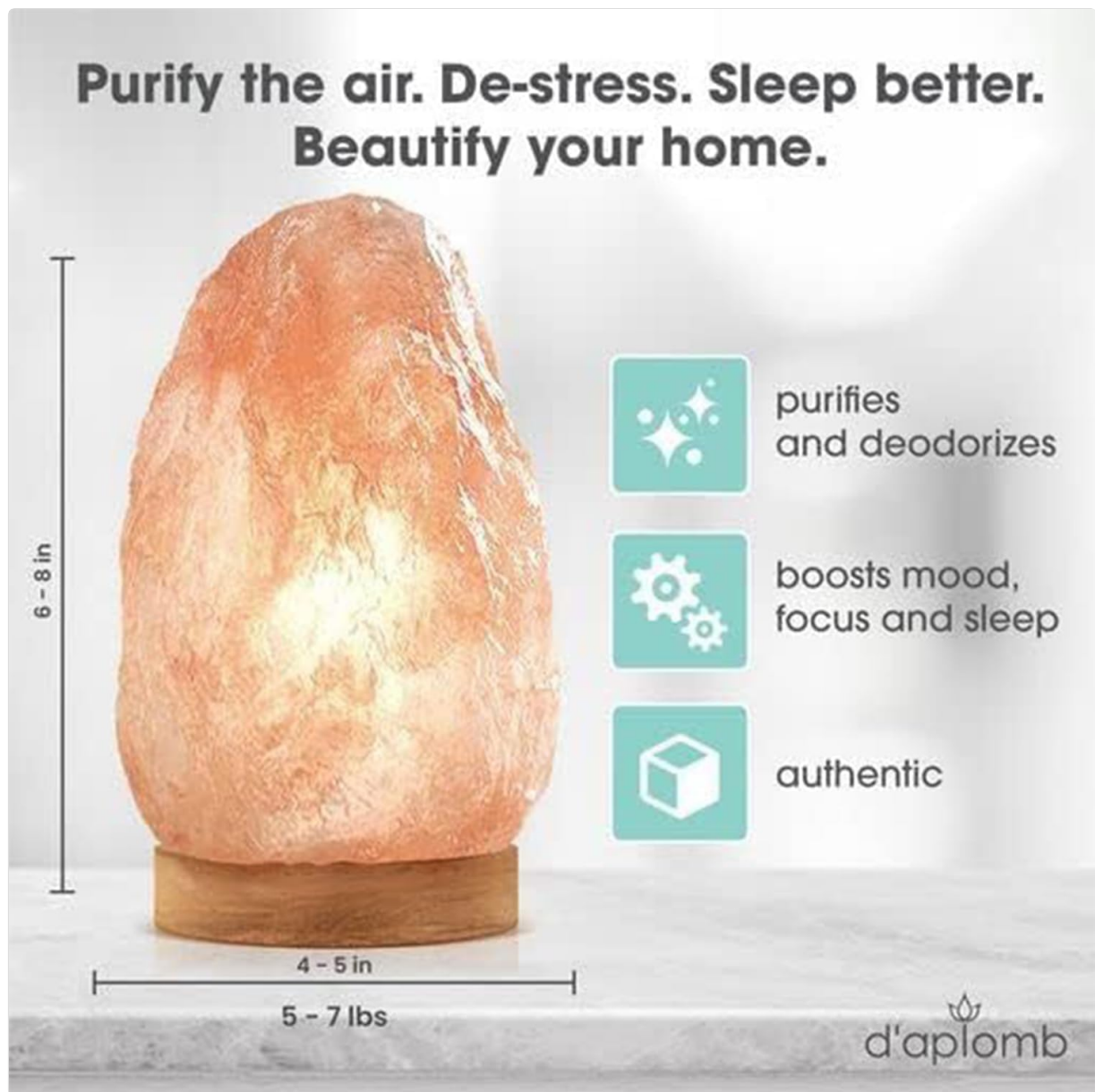


Image: Components of the d'aplomb Himalayan Salt Lamp, including the salt crystal, wooden base, dimmer switch, and two 15-watt bulbs.

### 3. OPERATING INSTRUCTIONS

- **Turning On/Off:** Locate the dimmer switch on the electrical cord. Rotate the knob clockwise to turn the lamp on. Continue rotating clockwise to increase brightness. Rotate counter-clockwise to dim the light. Continue rotating counter-clockwise until a click is heard to turn the lamp off.
- **Adjusting Brightness:** The dimmer switch allows for gradual adjustment of the light intensity. Turn the knob to achieve your preferred level of brightness, from a soft glow to a brighter illumination.



Image: The d'aplomb Himalayan Salt Lamp on a bedside table, illustrating the dimmer cord's function to adjust lighting levels.

## 4. MAINTENANCE

- **Cleaning:** To clean the salt lamp, gently wipe the surface with a dry cloth. Do not use water or cleaning solutions, as salt is hygroscopic and will dissolve.
- **Moisture Management ("Sweating"):** Himalayan salt lamps naturally absorb moisture from the air. In humid environments, the lamp may appear to "sweat" or develop a moist surface. This is normal. To minimize this, keep the lamp on for several hours a day, or place it in a drier area. If excessive moisture occurs, place a coaster or tray underneath the lamp to protect surfaces.
- **Bulb Replacement:** If the bulb burns out, unplug the lamp, carefully remove the salt crystal from the base, and replace the old bulb with a new 15-watt E12 incandescent bulb. Ensure the new bulb is securely installed before re-placing the salt crystal.
- **Storage:** If storing the lamp for an extended period, ensure it is completely dry. Wrap it in plastic wrap or a plastic bag to protect it from moisture and store it in a dry place.

## 5. TROUBLESHOOTING

Problem	Solution
Lamp does not light up.	<ul style="list-style-type: none"> <li>• Ensure the power cord is securely plugged into a working electrical outlet.</li> <li>• Check if the dimmer switch is turned to the "on" position and rotated clockwise.</li> <li>• Verify that the bulb is correctly installed and not burnt out. Replace if necessary (use a 15-watt E12 bulb).</li> </ul>

Problem	Solution
Lamp is "sweating" or moist.	<ul style="list-style-type: none"> <li>• This is a natural property of Himalayan salt. Keep the lamp on for longer periods to generate heat and evaporate moisture.</li> <li>• Move the lamp to a less humid environment.</li> <li>• Place a coaster or tray under the lamp to collect any moisture and protect surfaces.</li> </ul>
Light is too dim or too bright.	<ul style="list-style-type: none"> <li>• Adjust the dimmer switch by rotating the knob clockwise to brighten or counter-clockwise to dim the light.</li> </ul>

## 6. SPECIFICATIONS

---

- **Lamp Type:** Natural Himalayan Salt Crystal
- **Material:** Crystal (Himalayan Salt)
- **Finish Type:** Hand Carved
- **Base Material:** Wood
- **Product Dimensions:** Approximately 5"D x 5"W x 7.5"H
- **Item Weight:** Approximately 7 Pounds
- **Light Source Type:** Incandescent
- **Bulb Base:** E12
- **Wattage:** 15 watts (max)
- **Switch Type:** Dimmer
- **Special Feature:** Dimmable
- **Power Source:** Corded Electric
- **Included Components:** 2 x 15W E12 Bulbs, Dimmer Cord
- **Indoor/Outdoor Usage:** Indoor Only
- **Water Resistance Level:** Not Water Resistant

## 7. WARRANTY & SUPPORT

---

The d'aplomb Himalayan Salt Lamp comes with a **90-Day Hassle-Free Warranty**. This warranty covers any issues you may encounter after receiving your product. For support or warranty claims, please refer to the contact information provided with your purchase or visit the d'aplomb official website.

## 8. PRODUCT MEDIA

---

### Product Images

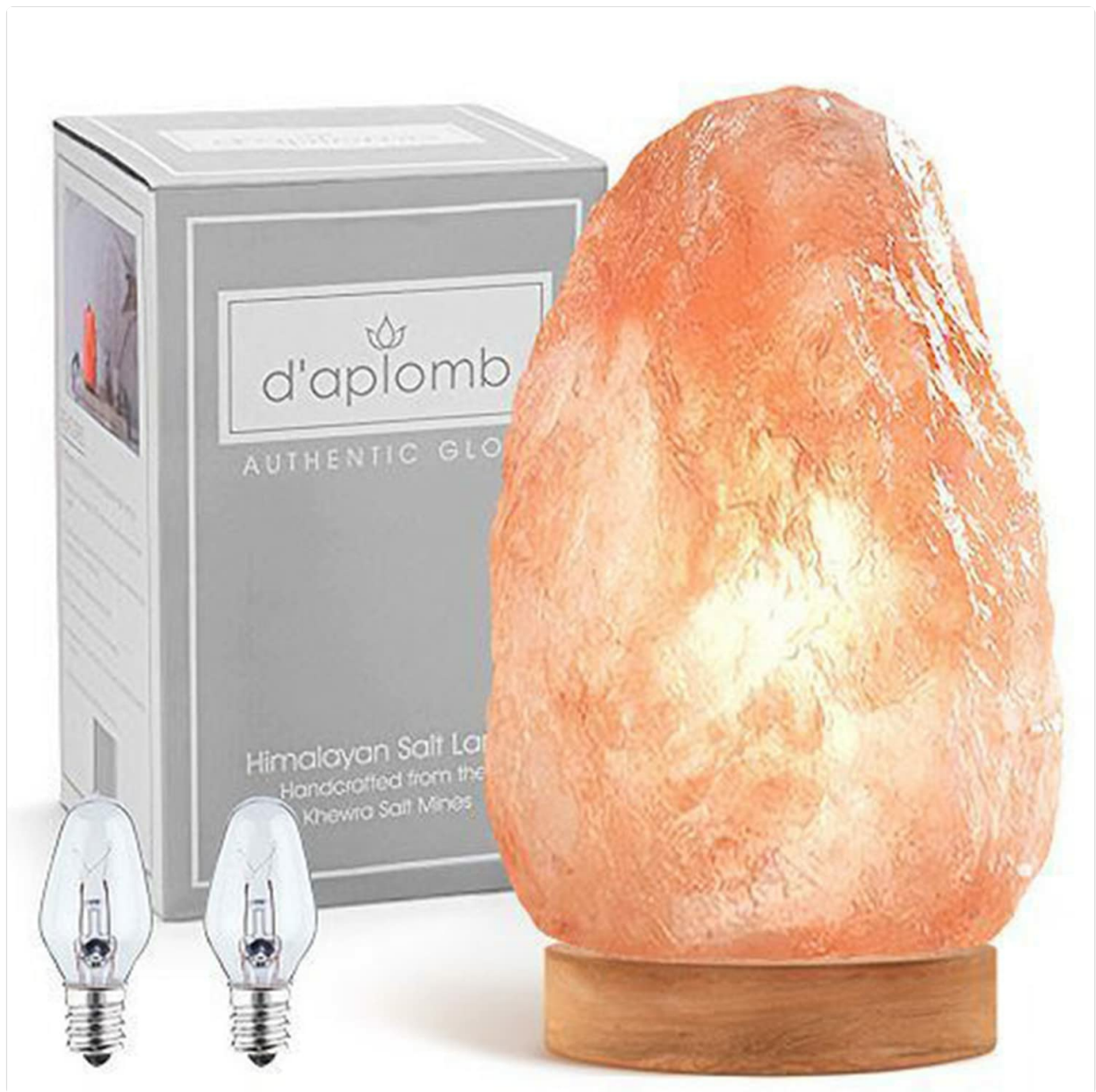


Image: The d'aplomb Medium Himalayan Salt Lamp, showcasing its natural rock texture and warm glow.



# UL-Listed dimmer cord

to adjust lighting according to preference



Image: The d'aplomb Himalayan Salt Lamp illuminating a room with its soft, ambient light.

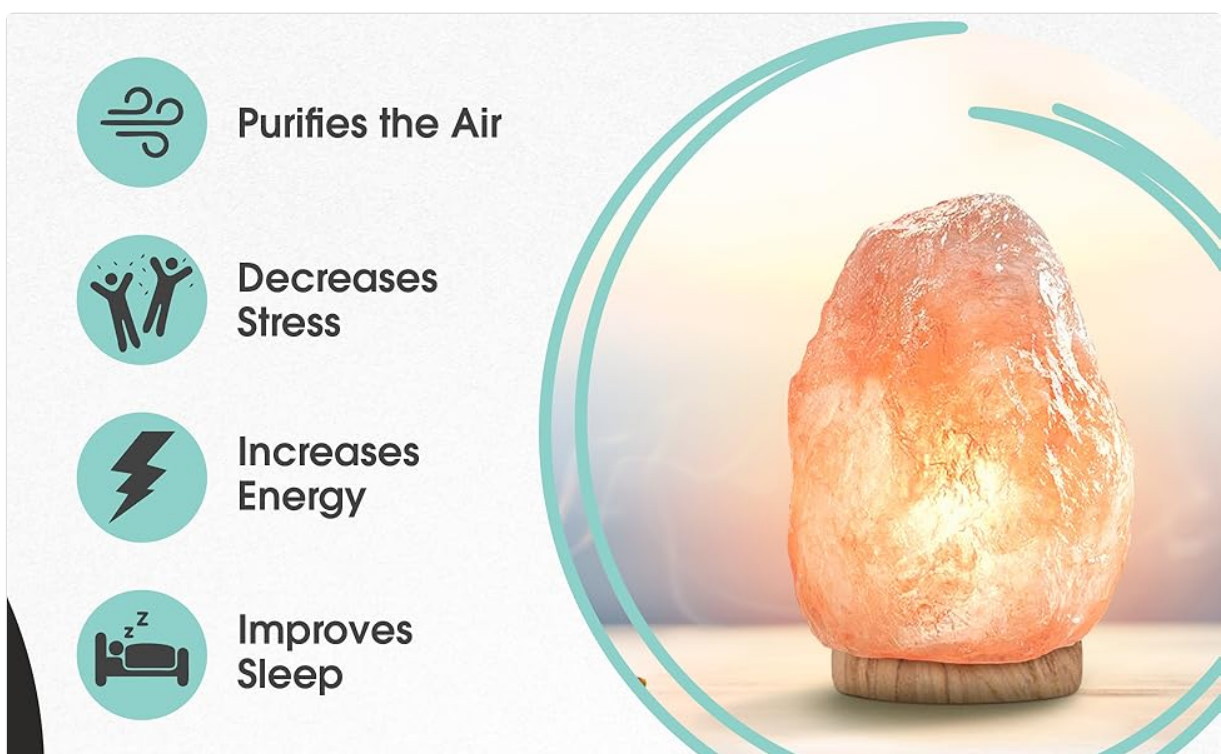


Image: An infographic highlighting potential benefits of the salt lamp, including air purification, stress reduction, increased energy, and improved sleep.

## Official Product Videos

Your browser does not support the video tag.

Video: An official d'aplomb video showcasing the 100% Authentic Himalayan Salt Lamps, highlighting their features and aesthetic appeal.