



[Manuals.plus](#) /

› [VNNBBS](#) /

› VNNBBS Wireless CarPlay Adapter (Model CPC200-CP2A) Instruction Manual

VNNBBS CPC200-CP2A

VNNBBS Wireless CarPlay Adapter (Model CPC200-CP2A) Instruction Manual

Brand: VNNBBS | Model: CPC200-CP2A

1. PRODUCT OVERVIEW

The VNNBBS Wireless CarPlay Adapter (Model CPC200-CP2A) converts your car's existing wired Apple CarPlay system into a wireless connection. This device allows for seamless integration of your iPhone with your car's infotainment system without the need for a physical cable connection after initial setup. Enjoy navigation, music, calls, and more directly on your car's display.

2022 UPGRADED WIRELESS CARPLAY DONGLE

3.1 Wired CarPlay to Wireless



Image: The VNNBBS Wireless CarPlay Adapter, showing its compact design, USB-A to USB-C converter, and how it enables wireless CarPlay on a car's display.

Only Compatible with The Original Cars with “Wired CarPlay” Models



—
Only Support iPhone



iPhone



Android



Image: Key features of the Wireless CarPlay Dongle, including Plug and Play, Wifi & Bluetooth connectivity, Fast Transmission, No audio delay, High Compatibility, and Steady Pairing.

2. SETUP INSTRUCTIONS

Follow these steps to set up your VNNBBS Wireless CarPlay Adapter:

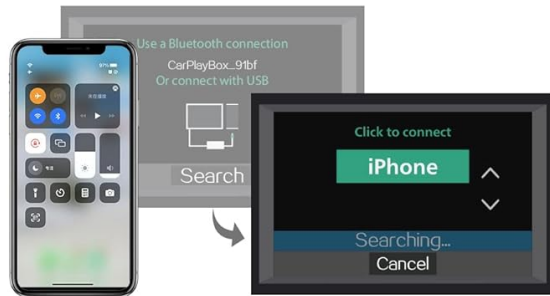
1. **Connect the Adapter:** Plug the USB dongle into your car's head unit USB port. If your car stereo only has a Type-C port, use the included USB-A to Type-C converter.
2. **Activate Bluetooth & Wi-Fi:** On your iPhone, turn on both Bluetooth and Wi-Fi.
3. **Pair with Your Car:** On your car's display, click "Search" for Bluetooth devices. Your phone's Bluetooth signal should appear. Select it to connect.
4. **Confirm CarPlay Connection:** On your iPhone, click "Pair" and then "Use CarPlay" to establish the wireless connection.

How to use wireless CarPlay?



First, you need connect the USB dongle to the car head unit USB port. (Noted: Type-C end is plugged into the wireless carplay, if your car stereo only has type-C port, please use the USB-A to Type-C converter included in the package.)

2. Click “search”, Then, turn on the phone Bluetooth & WiFi, the phone Bluetooth signal appears on the car.



3. Last step, Phone click “pair”, and choose “Use CarPlay” to achieve Wireless connection.

Image: Visual guide demonstrating the three main steps for connecting the wireless CarPlay adapter: plugging it into the car's USB port, enabling Bluetooth and Wi-Fi on the iPhone, and confirming the pairing on both devices.

Your browser does not support the video tag.

Video: An official seller video demonstrating the setup process for the Wireless CarPlay Adapter for Factory Wired Apple CarPlay, showing how to connect the device and pair it with an iPhone.

Your browser does not support the video tag.

Video: An official seller video showcasing the upgraded 2022 Wireless CarPlay Adapter and its quick connection capabilities.

Your browser does not support the video tag.

Video: An official seller video highlighting the features and ease of use of the 2022 Hot Sell Wireless Apple CarPlay Dongle.

Your browser does not support the video tag.

Video: An official seller video demonstrating the USB Wireless CarPlay Dongle Adapter for iPhone, showing its connection and functionality.

3. OPERATING INSTRUCTIONS

Once connected, the VNNBBS Wireless CarPlay Adapter allows you to control your iPhone's CarPlay interface

using your car's native controls.

3.1 Control Methods

- **Original Car Button Operation:** Use your car's existing physical buttons to navigate the CarPlay interface.
- **Original Car Touchscreen Operation:** Interact directly with the CarPlay display if your car has a touchscreen.
- **Original Car Knob Operation:** Utilize the car's control knob for precise navigation within CarPlay menus.
- **Siri Voice Control:** Activate Siri for hands-free commands, such as making calls, sending messages, getting directions, or playing music.



Image: Demonstrates how to control CarPlay using the car's original buttons, touchscreen, control knob, and Siri voice commands for a seamless user experience.



Image: Illustrates the use of Siri Voice Control with CarPlay, showing examples like 'Call my mom', 'Open the music', and 'Go to the airport' for hands-free operation.

3.2 Automatic Connection

After the initial pairing, the adapter will automatically connect to your iPhone when you start your car, providing a hassle-free wireless CarPlay experience.

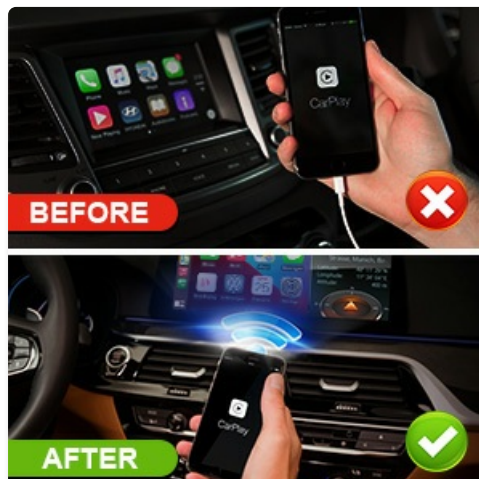


Image: A visual comparison showing the clutter of a wired CarPlay connection (BEFORE) versus the clean, seamless experience of a wireless CarPlay connection (AFTER) enabled by the adapter.

4. COMPATIBILITY

The VNNBBS Wireless CarPlay Adapter is designed for specific car and phone configurations:

- **Car Compatibility:** Only compatible with original cars that come with factory-installed wired Apple CarPlay models.
- **Phone Compatibility:** Only supports iPhone devices. Android phones are not supported.



Image: Clearly states that the adapter is only compatible with original cars featuring wired CarPlay and exclusively supports iPhone devices, with Android devices explicitly shown as incompatible.

5. MAINTENANCE

To ensure the longevity and optimal performance of your VNNBBS Wireless CarPlay Adapter, please follow these maintenance guidelines:

- **Keep Clean:** Regularly wipe the adapter with a soft, dry cloth to remove dust and debris. Avoid using liquid

cleaners.

- **Avoid Extreme Temperatures:** Do not expose the device to extreme heat or cold, as this can affect its internal components.
- **Handle with Care:** Avoid dropping the adapter or subjecting it to strong impacts.
- **Proper Storage:** When not in use for extended periods, store the adapter in a cool, dry place away from direct sunlight.

6. TROUBLESHOOTING

If you encounter issues with your VNNBBS Wireless CarPlay Adapter, try the following solutions:

- **No Connection:**
 - Ensure your car supports wired Apple CarPlay.
 - Verify that Bluetooth and Wi-Fi are enabled on your iPhone.
 - Unplug the adapter from the car's USB port, wait 10 seconds, and plug it back in.
 - Restart your iPhone and your car's infotainment system.
 - Check if your iPhone's Bluetooth is paired directly with the car's system. If so, unpair it and try connecting via the adapter again.
- **Intermittent Connection/Dropped Connection:**
 - Ensure the adapter is securely plugged into the USB port.
 - Minimize potential interference from other wireless devices in the car.
 - Update your iPhone's iOS to the latest version.
 - Unplug and replug the adapter.
- **Lag or Delay:**
 - Ensure your iPhone is not running too many background applications.
 - Check for any available firmware updates for the adapter (refer to manufacturer's website if applicable).

7. SPECIFICATIONS

Feature	Detail
Product Dimensions	2.6 x 0.4 x 0.31 inches
Item Weight	3.56 ounces
ASIN	B09MN4BCWJ
Item Model Number	CPC200-CP2A
Date First Available	December 24, 2021
Manufacturer	VNNBBS
Compatible Devices	Smartphone (iPhone only)
Specific Uses For Product	Cell Phone (CarPlay integration)
Connector Type	USB Type C (with USB-A to USB-C converter included)

Feature	Detail
---------	--------

Color	Black
-------	-------

8. WARRANTY AND SUPPORT

For warranty information and technical support, please refer to the documentation included with your product or visit the official VNNBBS website. Keep your purchase receipt for warranty claims.