

## Manuals+

[Q & A](#) | [Deep Search](#) | [Upload](#)

[manuals.plus](#) /

› [WAINLUX](#) /

› [Laser Engraver WAINLUX K6 Pro Instruction Manual](#)

## WAINLUX K6-04

# WAINLUX K6 Pro Laser Engraver Instruction Manual

Model: K6-04

## INTRODUCTION

---

This manual provides essential information for the safe and effective operation of your WAINLUX K6 Pro Laser Engraver. Please read it thoroughly before first use and keep it for future reference.

The WAINLUX K6 Pro is a portable 3000mW laser engraving machine designed for precision engraving on various materials such as cardboard, wood, leather, cloth, bamboo, plastic, and glass. It features Bluetooth and USB connectivity for versatile control.



Figure 1: WAINLUX K6 Pro Laser Engraver with various engraved samples including a glass, wooden ornaments, and a wooden block.

## SAFETY PRECAUTIONS

- **Eye Protection:** Always wear appropriate laser safety glasses when operating the engraver. The built-in protective lenses reduce harmful blue light, but additional eye protection is recommended.
- **Ventilation:** Operate the engraver in a well-ventilated area to dissipate smoke and fumes produced during engraving. The device has a built-in exhaust fan.
- **Material Compatibility:** Do not engrave materials containing PVC or other chlorine-based plastics, as they can release toxic fumes. Refer to the material compatibility section for details.
- **Movement Protection:** The device features movement protection; if accidental movement is detected during operation, it will shut down immediately.

- **Overheating Monitoring:** The engraver monitors its internal temperature and will shut down if it approaches its heat threshold.
- **FDA Compliance:** The WAINLUX K6 laser engraving machine has passed CE, FCC, FDA certification. The FDA Accession Number is 2010047-000. It was tested according to IEC 60825-1. Protective housing outside is Class 1.

## PACKAGE CONTENTS

---

Upon unboxing, ensure all components are present and undamaged:

- WAINLUX K6 Pro Laser Engraver Unit
- Power Adapter
- USB Cable
- USB Flash Disk (containing software and user manual)
- Laser Protective Panel
- Sample Paper and Wood materials
- User Manual (printed)



Figure 2: Included accessories: Paper/Wood samples, Laser Protective Panel, User Manual, USB Flash Disk, Power Adapter, and USB Cable.

## SETUP

---

### 1. Initial Connection

1. Place the engraver on a stable, flat surface in a well-ventilated area.
2. Connect the power adapter to the engraver and plug it into a power outlet.
3. Turn on the power switch located on the side of the engraver.
4. Connect the engraver to your computer via the provided USB cable, or prepare for Bluetooth connection.

### 2. Software Installation

The engraver supports Windows, Mac OS, iOS, and Android systems. Software is provided on the included USB flash disk.

1. Insert the USB flash disk into your computer.
2. Navigate to the appropriate folder for your operating system (e.g., "01\_Windows" or "02\_MAC").
3. Install the necessary drivers first, then proceed with the engraving software installation.

Your browser does not support the video tag.

Video 1: Demonstrates the software installation process for Windows operating systems.

Your browser does not support the video tag.

Video 2: Demonstrates the software installation process for Mac operating systems.

For mobile devices, download the official WAINLUX app from your device's app store. The app supports various file formats including JPEG/JPG/GIF/BMP/PNG.



Figure 3: The WAINLUX K6 Pro connected to a smartphone via Bluetooth, showing the app interface for design selection.

Your browser does not support the video tag.

Video 3: Demonstrates the Bluetooth connection process and app usage for the K6 Laser Engraver.

## OPERATING INSTRUCTIONS

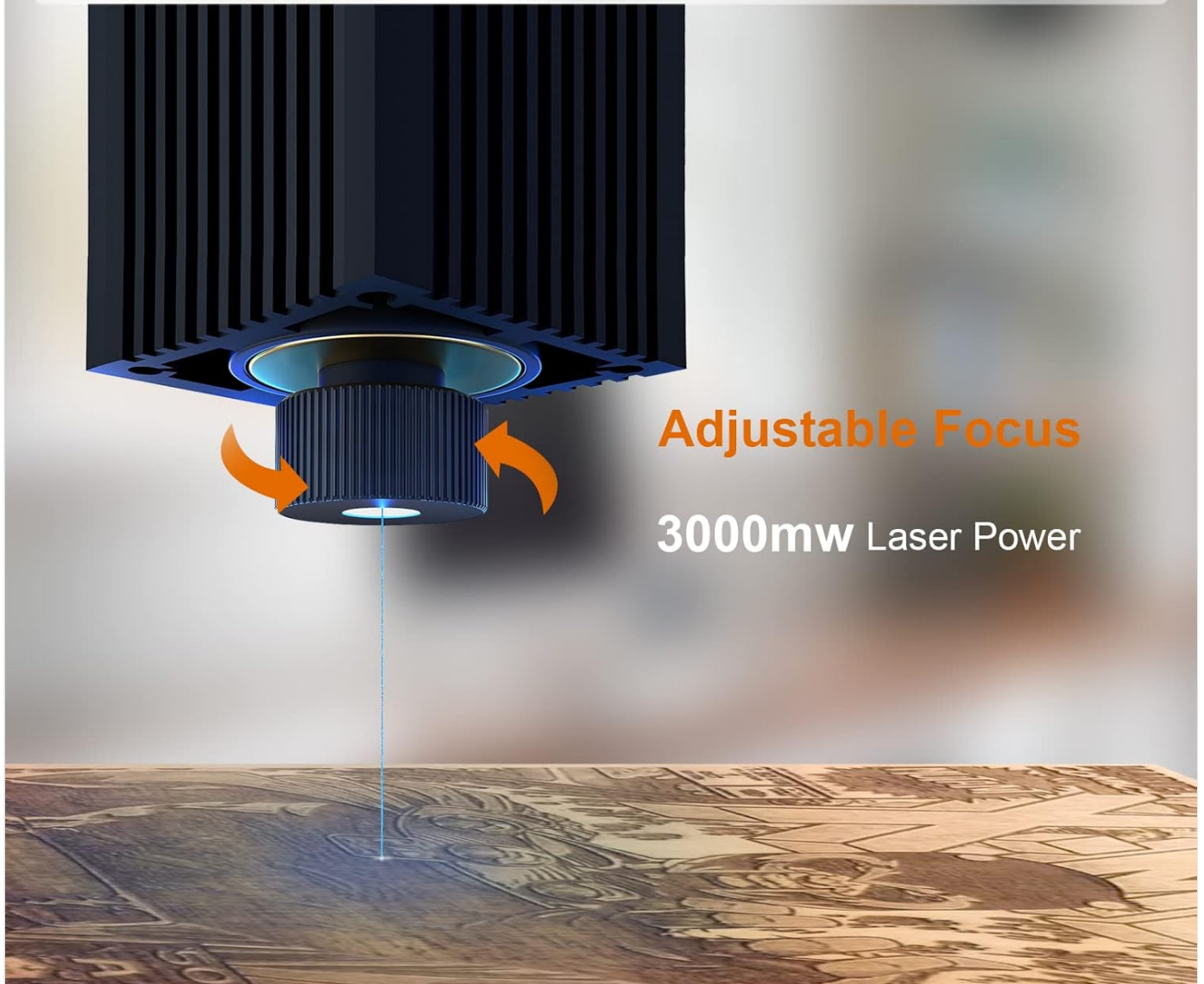
### 1. Adjusting Focal Length

Proper focal length adjustment is crucial for optimal engraving results. The laser projects a small dot; adjust the laser head until this dot is as tiny as possible on the material surface.



# Small power. Powerful laser.

Its 3000mw laser power makes it 3x faster and more powerful than any other portable engraver.



Adjustable Focus

3000mw Laser Power

Figure 4: Close-up of the adjustable focus mechanism on the laser head, indicating 3000mW laser power.

Your browser does not support the video tag.

Video 4: Guide on how to adjust the focal length of the K6 engraver for optimal laser spot size.

## 2. Material Preparation

Ensure the material is clean and securely placed within the engraving area. For glass engraving, you must blacken the surface with a marker pen before carving to allow the laser to interact with the material.

Compatible materials include: Wood, Cardboard, Bamboo, Plastic, Acrylic, Leather, Glass (pre-treated), Lacquered metal.

Materials that **cannot** be engraved: Stainless steel, metal (unlacquered), aluminum, crystal, transparent or translucent materials (without pre-treatment).



Figure 5: Various materials suitable for engraving, including wood, cardboard, bamboo, plastic, acrylic, leather, and glass.

### 3. Engraving Process

1. Open the engraving software or mobile app.
2. Import your desired image or design (JPEG/JPG/GIF/BMP/PNG are supported).
3. Adjust engraving parameters such as carving power, speed, and contrast based on the material.
4. Use the "Preview" function to project the image outline onto the material, ensuring correct positioning.
5. Once satisfied with the preview, initiate the engraving process.

# Portable Home Laser Machine Can Customize Small Gifts For You

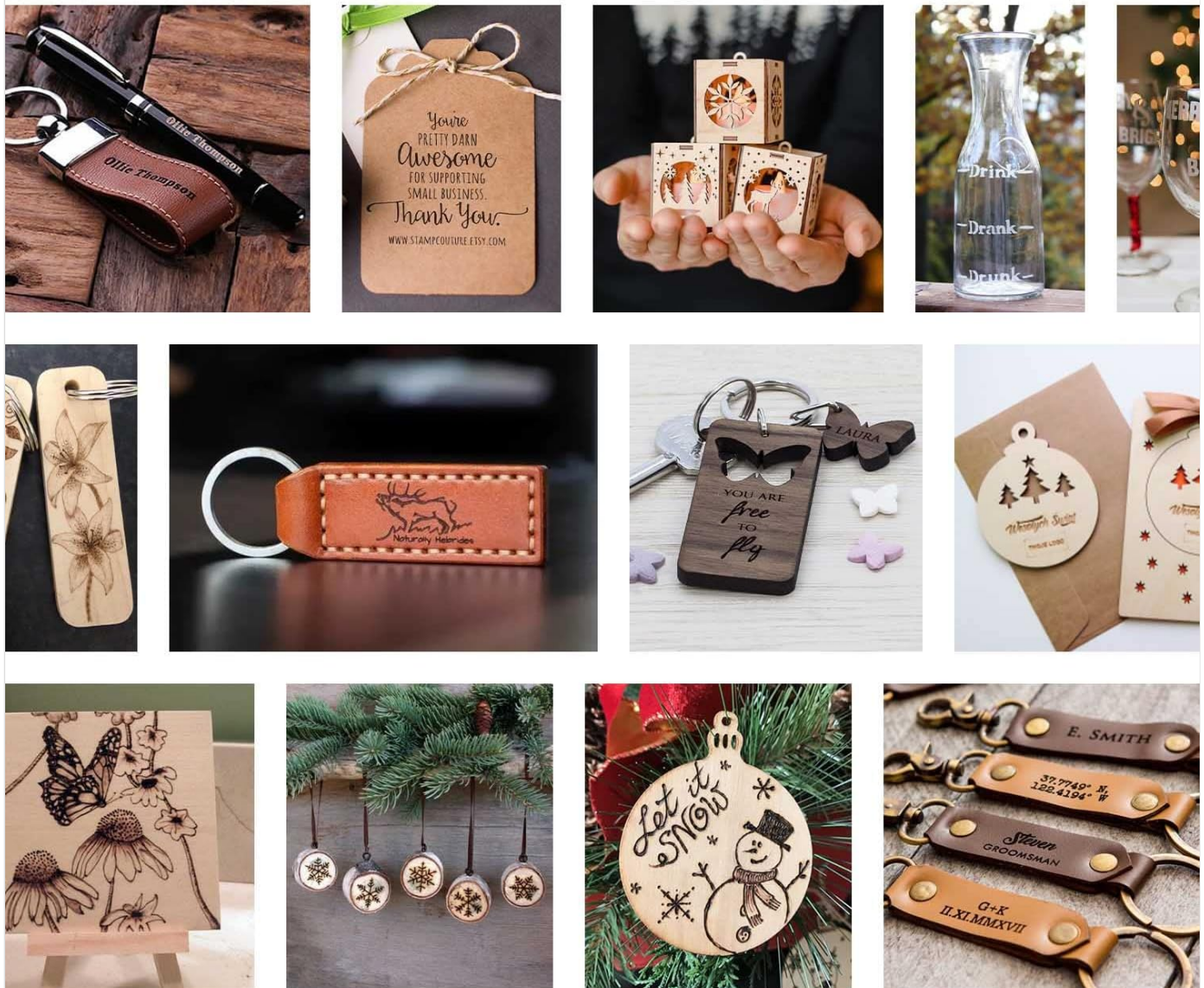


Figure 6: The K6 Pro actively engraving a design, showcasing the laser in action.

## MAINTENANCE

- **Cleaning:** Regularly clean the laser lens and the engraving area to ensure optimal performance and prevent debris buildup. Use a soft, lint-free cloth.
- **Ventilation Fan:** Ensure the built-in exhaust fan is clear of obstructions to maintain proper heat dissipation and smoke removal.
- **Storage:** When not in use, store the engraver in a dry, dust-free environment.

## TROUBLESHOOTING

Problem	Possible Cause	Solution
Engraver not connecting to computer/app.	Incorrect driver installation, Bluetooth not enabled, USB cable issue.	Reinstall drivers from USB disk, ensure Bluetooth is on, try a different USB port/cable.



Problem	Possible Cause	Solution
Poor engraving quality (faint, blurry).	Incorrect focal length, wrong power/speed settings, incompatible material.	Adjust focal length to the smallest laser dot, optimize power/speed settings for the material, ensure material is compatible.
Engraver shuts down unexpectedly.	Overheating, accidental movement.	Ensure proper ventilation, avoid moving the device during operation.
Laser not firing.	Power issue, software error, laser module fault.	Check power connections, restart software/device, contact support if issue persists.

## SPECIFICATIONS

- **Model:** K6-04
- **Laser Power:** 3000mW
- **Accuracy:** 0.05mm
- **Connectivity:** Bluetooth, USB
- **Compatible OS:** Windows, Mac OS, iOS, Android
- **Product Dimensions:** 6.77 x 6.77 x 6.37 inches
- **Item Weight:** 3.94 pounds
- **Continuous Working Time:** 8 hours
- **Lifespan:** 10000+ Hours
- **Certifications:** CE, FCC, FDA (Accession Number: 2010047-000)

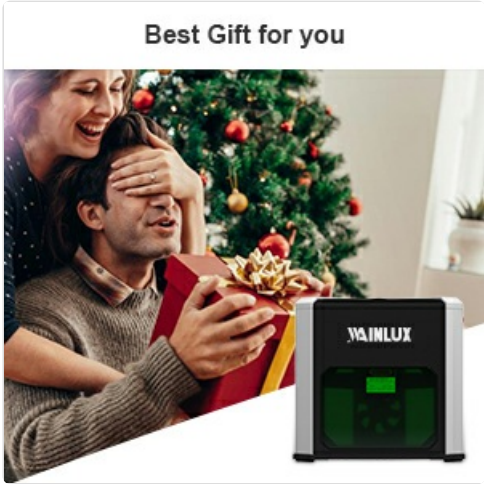


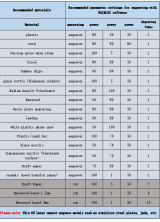





Figure 7: Diagram showing the dimensions of the WAINLUX K6 Pro: 172mm (width) x 172mm (depth) x 162mm (height), with an engraving area of 80mm x 80mm.

## WARRANTY AND SUPPORT

WAINLUX provides professional customer service. For pre-sale consultation or any issues encountered, please refer to the support website mentioned in your product documentation or contact customer service directly. The manufacturer is WAINLUX. For more information, visit the [WAINLUX Store on Amazon](#).



Related Documents - K6-04

	<p><a href="#">WAINLUX K6 Pro Laser Engraver: Material Engraving Settings Guide</a></p> <p>Detailed parameter settings for engraving various materials like wood, leather, acrylic, and paper using the WAINLUX K6 Pro laser engraver with WAINLUX software.</p>
	<p><a href="#">Wainlux Laser Engraving Machine User Manual</a></p> <p>Comprehensive user manual for the Wainlux laser engraving machine, covering specifications, accessories, operation modes, software settings, photo and text engraving, and mobile app usage. Includes instructions for both desktop software and smartphone app control.</p>
	<p><a href="#">WAINLUX K10 3W Laser Engraver Software Engraving Parameter Table</a></p> <p>A comprehensive guide to software engraving parameters for the WAINLUX K10 3W Laser Engraver, detailing settings for various materials including wood, paper, leather, acrylic, glass, ceramics, and metals.</p>
	<p><a href="#">Wainlux K6 Laser Engraving Machine User Manual and Operating Instructions</a></p> <p>This user manual provides detailed operating instructions for the Wainlux K6 laser engraving machine, covering installation, software usage, engraving techniques, and safety guidelines.</p>
<p>WAINLUX K6 User Manual</p> 	<p><a href="#">WAINLUX K6 Laser Engraver User Manual</a></p> <p>A comprehensive user manual for the WAINLUX K6 laser engraver, covering setup, software download for mobile and desktop, and troubleshooting.</p>
	<p><a href="#">WAINLUX JL7 Laser Engraver Troubleshooting Guide</a></p> <p>Troubleshooting common issues with the WAINLUX JL7 Laser Engraver, including power, computer connection, app connection, and engraving quality.</p>