

**Manuals+**

[Q & A](#) | [Deep Search](#) | [Upload](#)

manuals.plus /

- › [Segway](#) /
- › [Segway Ninebot F25 Electric Kick Scooter User Manual](#)

**Segway F25**

# Segway Ninebot F25 Electric Kick Scooter User Manual

Model: F25 | Brand: Segway

## INTRODUCTION

---

The Segway Ninebot F25 Electric Kick Scooter is designed for efficient and enjoyable urban commuting. It combines a powerful 300W motor with 10-inch pneumatic tires for a smooth and stable ride. Key features include an extended 12.4-mile range, a top speed of 15.5 mph, a convenient foldable design, and a Bluetooth security lock for enhanced safety. This manual provides essential information for setup, operation, maintenance, and troubleshooting to ensure optimal performance and longevity of your scooter.



Figure 1: Segway Ninebot F25 Electric Kick Scooter, showcasing its sleek design.

## SETUP

---

### Unfolding the Scooter

To unfold your Ninebot F25 Kick Scooter, release the folding mechanism located near the base of the handlebar stem. Carefully lift the handlebar stem until it locks securely into place. Ensure all locking mechanisms are engaged before riding.



Figure 2: The scooter in its folded position, ready for transport or storage.

### Initial Charging

Before first use, fully charge the scooter's battery. Locate the charging port, typically on the side of the deck, and connect the provided charger. The charging indicator will show the charging status. A full charge takes

approximately 6.5 hours.



Figure 3: Close-up view of the charging port.

### App Connection

For enhanced features and security, download the official Segway-Ninebot app. Connect your scooter via Bluetooth to access functions like locking the scooter, monitoring battery life, and customizing riding modes.

## OPERATING INSTRUCTIONS

---

### Controls and Display

The Ninebot F25 features an intuitive handlebar display that shows speed, battery level, and riding mode. The power button controls on/off and mode selection. The accelerator is a thumb lever on the right, and the brake lever is on the left.



Figure 4: Handlebar display showing current speed and battery status.

### Riding Modes

The F25 offers three versatile riding modes to suit different needs:

- **Eco Mode:** Maximizes battery life for longer rides at a lower speed.
- **Standard Mode (D):** Balances speed and battery life for everyday commuting.
- **Sport Mode (S):** Provides maximum speed and acceleration for dynamic riding.

## Tires and Ride Comfort

Equipped with 10-inch pneumatic tires, the F25 provides superior shock absorption for a comfortable ride over various surfaces. These tires also contribute to improved durability and puncture resistance.



Figure 5: The 10-inch pneumatic tire designed for enhanced comfort and durability.

## Grade Slope Capability

The Ninebot F25 is capable of tackling inclines up to a 12% grade, making it suitable for varied urban terrains.



Figure 6: Demonstrating the scooter's ability to climb inclines.

## Built-in LED Headlight

For improved visibility and safety during low-light conditions, the scooter is equipped with a built-in LED headlight.



Figure 7: The integrated LED headlight for night riding.

## Product Overview Video

Watch this official video for a comprehensive overview of the Segway Ninebot F Series Electric Kick Scooter's features and operation.

Your browser does not support the video tag.

Video 1: Segway Ninebot F Series Electric Kick Scooter Official Product Video.

## MAINTENANCE

---

### Smart Battery Management System (BMS)

The scooter is equipped with a Smart Battery Management System (BMS) that monitors battery health, ensuring optimal performance and safety. To prolong battery life, avoid fully draining the battery frequently and store the scooter in a cool, dry place when not in use.

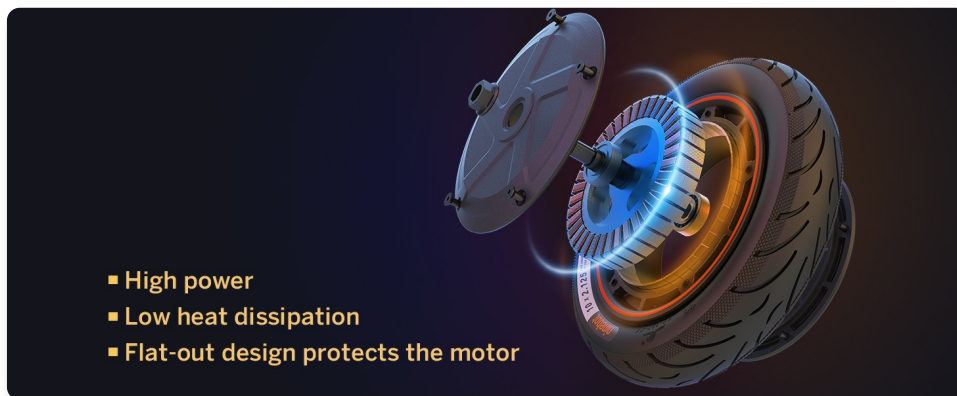


Figure 8: Internal view of the Smart Battery Management System (BMS).

### Tire Pressure Check

Regularly check the tire pressure of your pneumatic tires. Proper inflation is crucial for ride comfort, range, and tire longevity. Refer to the tire sidewall for recommended pressure (typically around 30-35 PSI for 10-inch tires).

### Brake Adjustment

Ensure your brakes are functioning correctly. If the brake lever feels too loose or too tight, it may need adjustment. Use a 5/32" (4 mm) hex wrench to adjust the brake cable tension as shown in the diagram.

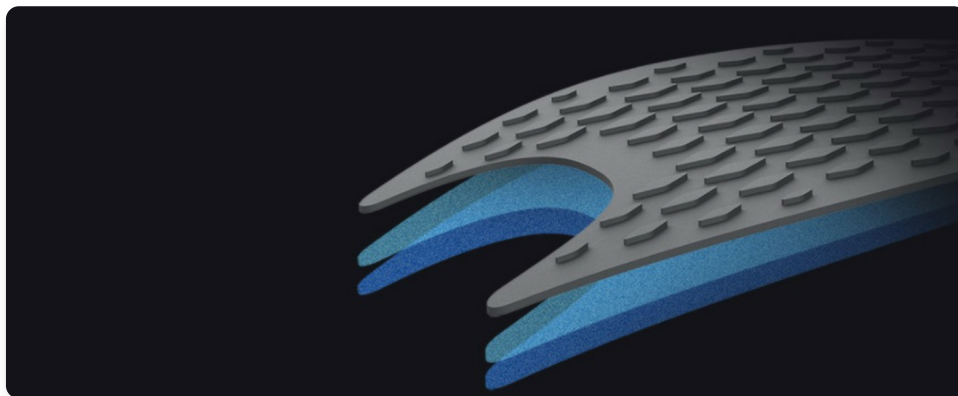


Figure 9: Instructions for adjusting the brake cable.

### Cleaning

Clean your scooter regularly with a damp cloth. Avoid using high-pressure water jets or harsh chemicals, as these can damage electronic components.

# TROUBLESHOOTING

---

## Scooter Not Powering On

- Ensure the battery is charged. Connect the charger and check if the charging indicator lights up.
- Press and hold the power button for a few seconds.
- If the issue persists, contact customer support.

## Reduced Range or Speed

- Check tire pressure. Under-inflated tires can significantly reduce range and speed.
- Consider the riding mode. Eco mode offers the longest range but lowest speed.
- Rider weight, terrain, and ambient temperature can affect performance.

# SPECIFICATIONS

---

Feature	Specification
Brand	Segway
Model Name	Ninebot Electric Kick Scooter - F25
Motor Power	300W
Top Speed	15.5 mph
Maximum Distance Range	12.4 Miles
Weight Limit	220 Pounds
Tire Type	10-inch Pneumatic
Charging Time	6.5 Hours
Product Dimensions (LxWxH)	45"L x 18.9"W x 45.67"H
Item Weight	32.2 Pounds
Special Feature	Foldable
Certifications	UL-2272 Certified





Figure 10: Product label with key specifications and certifications.



Figure 11: Test data for speed and range across various Ninebot KickScooter models and modes.

## WARRANTY

---

The Segway Ninebot F25 Electric Kick Scooter comes with a 2-year limited warranty. Please refer to the warranty manual for detailed information regarding coverage, terms, and conditions.

## SUPPORT







---

For further assistance, detailed instructions, or troubleshooting, please refer to the official User Manual PDF available online:

**Download User Manual  
(PDF)**

You may also visit the official Segway website or contact their customer service for direct support.

**Related Documents - F25**

	<p><a href="#">Segway KickScooter ES4 Owner's Manual</a></p> <p>Comprehensive owner's manual for the Segway KickScooter ES4, detailing safety guidelines, technical specifications, charging procedures, riding techniques, and mobile app integration for an optimal user experience.</p>
	<p><a href="#">Segway GT Series SuperScooter User Manual</a></p> <p>Comprehensive user manual for the Segway GT1 and GT2 electric scooters, covering diagrams, functions, dashboard indicators, speed modes, specifications, troubleshooting, and certifications.</p>
	<p><a href="#">Ninebot KickScooter User Manual - Specifications, Features, and Certifications</a></p> <p>Comprehensive user manual for the Ninebot KickScooter series (F20D, F25E, F30E, F30D, F40E, F40D) from Segway. Includes diagrams, detailed specifications, features, safety information, and EU compliance details.</p>
	<p><a href="#">Segway KickScooter GT Series User Manual - Features, Specs, and Troubleshooting</a></p> <p>Comprehensive user manual for the Segway KickScooter GT series (GT1, GT2). Learn about product features, handlebar controls, dashboard indicators, speed modes, technical specifications, and troubleshooting. Visit Segway.com for updates.</p>
	<p><a href="#">Segway miniPLUS User Manual - Safety, Operation, and Specifications</a></p> <p>Comprehensive user manual for the Segway miniPLUS, covering safety, assembly, operation, maintenance, and specifications for this personal electric balancing device. Visit www.segway.com for more resources.</p>
	<p><a href="#">Segway Ninebot E3 Series User Manual - Safety, Features, and Operation Guide</a></p> <p>Comprehensive user manual for the Segway Ninebot E3 and E3 Pro electric kick scooters. Learn about assembly, safety, operation, app features, and maintenance from Segway.</p>