

## Manuals+

[Q & A](#) | [Deep Search](#) | [Upload](#)

manuals.plus /

- › [TYMO](#) /
- › [TYMO Flat Iron Hair Straightener and Curler 2 in 1 User Manual](#)

## TYMO HC201

# TYMO Flat Iron Hair Straightener and Curler 2 in 1 User Manual

Model: HC201 | Brand: TYMO

## INTRODUCTION

The TYMO Flat Iron Hair Straightener and Curler 2 in 1 is a versatile hair styling tool designed for both straightening and curling. It features rapid heating, adjustable temperature settings, and safety mechanisms for efficient and safe use across various hair types.



Image: The TYMO Flat Iron Hair Straightener and Curler, showcasing its light pink color and sleek design.

## SAFETY INFORMATION

---

- Always ensure the product is unplugged when not in use or before cleaning.
- Do not use this appliance near water, such as in a bathtub, basin, or other vessel containing water.
- Keep out of reach of children.
- Check electrical compatibility before use in foreign countries. The device supports 100-240V.
- The uniquely upgraded automatic shut-off function will activate if the straightener remains non-moving for 5 minutes, enhancing safety.
- The anti-scald design helps prevent accidental burns during use.

# Crafted For Your Safety



Image: Close-up of the TYMO Flat Iron highlighting its thoughtful anti-scald design and the 5-minute auto-off feature for enhanced user safety.



Image: Display of product certifications including CE, ETL, and FC, indicating compliance with safety and quality standards.

## SETUP

1. Unpack the TYMO Flat Iron and remove all packaging materials.
2. Inspect the device for any visible damage. Do not use if damaged.
3. Plug the power cord into a suitable electrical outlet (100-240V compatible).

## OPERATING INSTRUCTIONS

---

### Powering On and Temperature Adjustment

- The device features a patented gravity sensor. Simply sway the styling iron to activate it.
- The LED display will show the current temperature.
- Adjust the temperature using the controls to select from 32 heating levels, ranging from 140°F to 450°F.
- The device heats up in approximately 10 seconds due to advanced MCH heating technology.
- The iron automatically detects and calibrates the set temperature 30 times per second to maintain consistent heat and prevent hair damage.
- The temperature last memory feature will recall your last used setting.

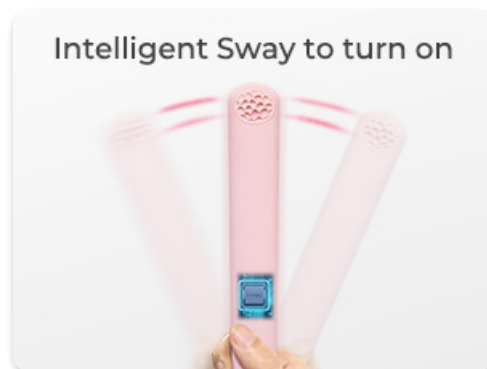


Image: Illustration demonstrating the intelligent sway motion required to turn on the TYMO Flat Iron.

# 32 Heating Modes

For All Hair Types

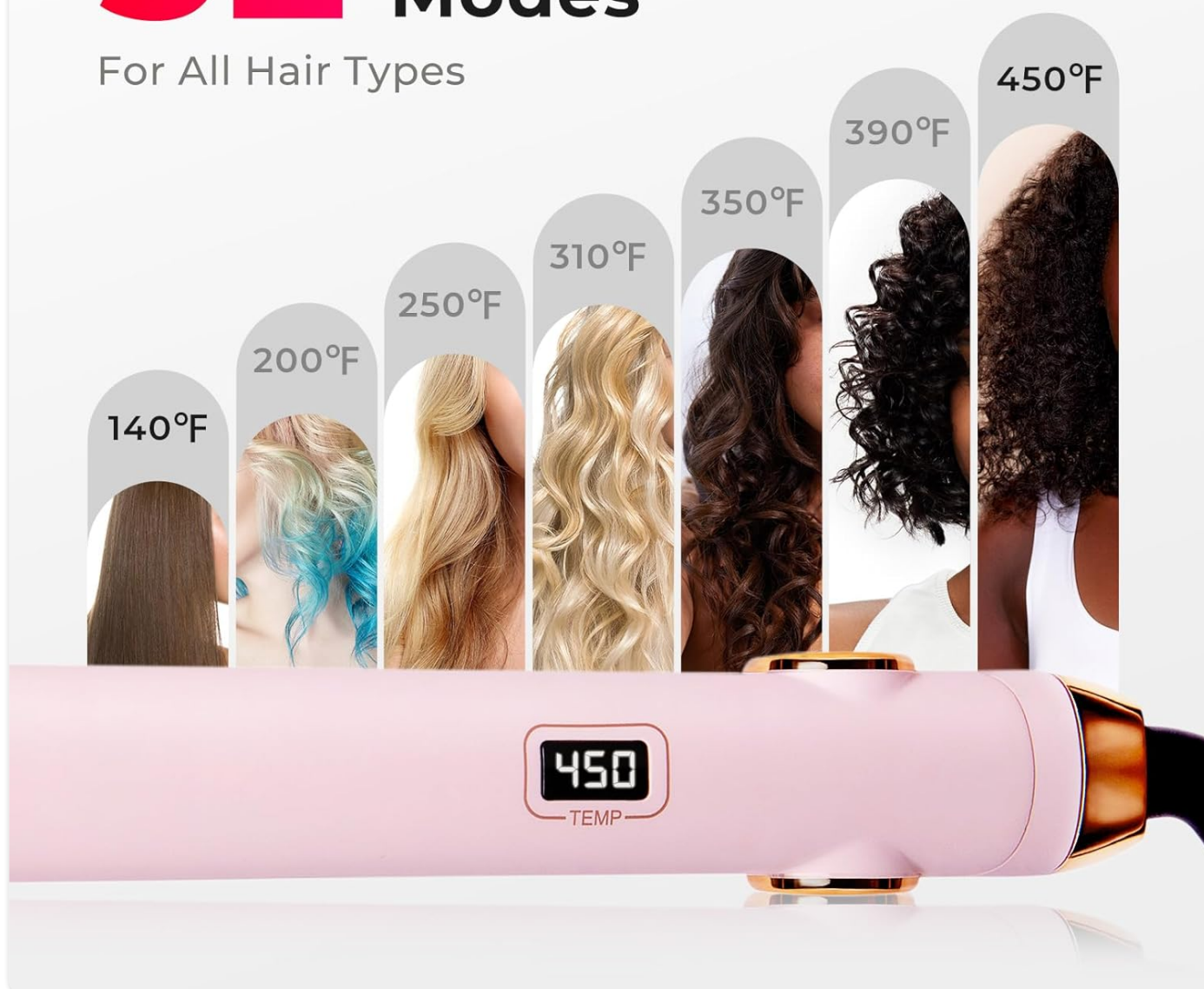


Image: Visual representation of the 32 adjustable heating modes, showing recommended temperatures for different hair types from 140°F to 450°F.



Image: A detailed temperature guide suggesting optimal heat settings for various hair types: 140°F-250°F for soft hair, 250°F-310°F for thin hair, 310°F-350°F for dyed hair, 350°F-390°F for curly hair, and 390°F-450°F for thick hair.



# Heat Up In **10s**

Revolutionary MCH Heating Technology

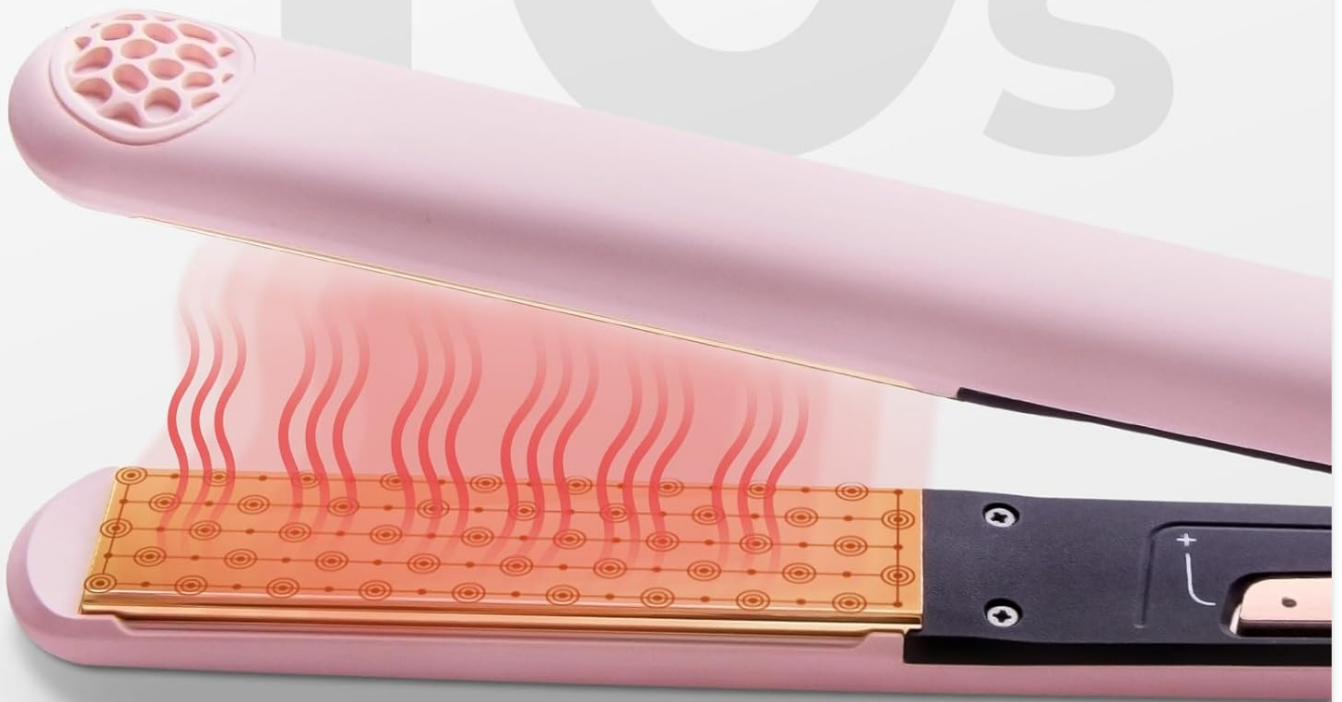


Image: Depiction of the TYMO Flat Iron's rapid 10-second heat-up time, powered by revolutionary MCH heating technology.

## Styling Hair

- Ensure hair is clean, dry, and detangled before use.
- For straightening, take a small section of hair and place it between the 1-inch 3D floating plates.
- Smoothly glide the iron down the hair section from root to tip. The nano titanium coating ensures a single-pass smooth result without snagging.
- For curling, wrap a section of hair around the outer barrel of the iron, holding it for a few seconds before releasing.
- Repeat for all sections of hair until desired style is achieved.

# Nano Titanium Coating for **ONE PASS SMOOTH**



Image: A section of hair being straightened with the TYMO Flat Iron, illustrating the smooth, one-pass result achieved with the nano titanium coating.

## MAINTENANCE

---

- Always unplug the device and allow it to cool completely before cleaning.
- Wipe the plates and exterior with a soft, damp cloth. Do not use abrasive cleaners or harsh chemicals.
- Ensure no water enters the internal components.
- Store the flat iron in a cool, dry place, away from direct sunlight and moisture.
- Do not wrap the cord around the appliance, as this can damage the cord.

## TROUBLESHOOTING

---

If you encounter any issues with your TYMO Flat Iron, please refer to the following common solutions:

Problem	Possible Cause	Solution
Device does not turn on.	Not properly plugged in, power outlet issue, or device not activated.	Ensure the power cord is securely plugged into a working outlet. Sway the iron to activate the patented motion sensor.
Device not heating up.	Temperature setting too low, or internal malfunction.	Increase the temperature setting. If the issue persists, contact customer support.
Automatic shut-off activates too quickly.	Device has been stationary for 5 minutes.	This is a safety feature. Sway the iron to reactivate it.

For issues not listed here, please contact TYMO customer support.

## SPECIFICATIONS

Feature	Detail
Model Number	HC201
Product Dimensions	11.02 x 1.18 x 1.18 inches
Item Weight	13.4 ounces (approx. 0.84 lbs)
Plate Material	Titanium (Nano Titanium Coating)
Heating Technology	Advanced MCH Heating
Heat-up Time	Approx. 10 seconds
Temperature Range	140°F to 450°F (32 adjustable levels)
Voltage	100-240V (Dual Voltage)
Wattage	45 watts
Auto Shut-off	5 minutes of non-movement
Cord Type	Tangle-free swivel cord
Manufacturer	TYMO





Image: Diagram highlighting key features such as Nano Titanium Coat, 110/220V Dual Voltage, 360° Swivel Cord, Anti-Scald Design, LED Display, and Blinking Light Reminder.



Image: Emphasizing the lightweight design of the TYMO Flat Iron, weighing only 0.53 lbs, making it portable and comfortable to hold.

## WARRANTY AND SUPPORT

TYMO products are designed for durability and performance. While specific warranty details are not provided in this manual, please retain your proof of purchase for any warranty claims.

For technical support, troubleshooting assistance, or inquiries regarding product protection plans, please visit the official TYMO website or contact their customer service department. You may also refer to the [User Manual \(PDF\)](#) or [User Guide \(PDF\)](#) for additional information.

© 2023 TYMO. All rights reserved.

## Related Documents - HC201



Frequently Asked Questions

- Q: How do I use the brush?
- A: The brush is designed to be used on dry hair. It is not recommended to use the brush on wet hair as it may cause damage to the hair.
- Q: What is the maximum temperature?
- A: The maximum temperature of the brush is 230°C. It is recommended to use the brush at a lower temperature to avoid damage to the hair.
- Q: How do I clean the brush?
- A: The brush can be cleaned by using a soft brush and warm water. It is recommended to clean the brush after each use.
- Q: What is the warranty?
- A: The brush has a 2-year warranty. It is recommended to use the brush within the warranty period.
- Q: How do I use the brush on different hair types?
- A: The brush can be used on all hair types. It is recommended to use the brush on dry hair and to use a lower temperature for curly hair.
- Q: How do I use the brush on different hair lengths?
- A: The brush can be used on all hair lengths. It is recommended to use the brush on the ends of the hair and to use a lower temperature for short hair.
- Q: How do I use the brush on different hair colors?
- A: The brush can be used on all hair colors. It is recommended to use the brush on dry hair and to use a lower temperature for dark hair.
- Q: How do I use the brush on different hair textures?
- A: The brush can be used on all hair textures. It is recommended to use the brush on dry hair and to use a lower temperature for coarse hair.
- Q: How do I use the brush on different hair styles?
- A: The brush can be used on all hair styles. It is recommended to use the brush on dry hair and to use a lower temperature for straight hair.
- Q: How do I use the brush on different hair conditions?
- A: The brush can be used on all hair conditions. It is recommended to use the brush on dry hair and to use a lower temperature for damaged hair.
- Q: How do I use the brush on different hair treatments?
- A: The brush can be used on all hair treatments. It is recommended to use the brush on dry hair and to use a lower temperature for treated hair.
- Q: How do I use the brush on different hair products?
- A: The brush can be used on all hair products. It is recommended to use the brush on dry hair and to use a lower temperature for product-treated hair.
- Q: How do I use the brush on different hair environments?
- A: The brush can be used on all hair environments. It is recommended to use the brush on dry hair and to use a lower temperature for humid environments.
- Q: How do I use the brush on different hair climates?
- A: The brush can be used on all hair climates. It is recommended to use the brush on dry hair and to use a lower temperature for hot climates.
- Q: How do I use the brush on different hair seasons?
- A: The brush can be used on all hair seasons. It is recommended to use the brush on dry hair and to use a lower temperature for summer.
- Q: How do I use the brush on different hair months?
- A: The brush can be used on all hair months. It is recommended to use the brush on dry hair and to use a lower temperature for summer months.
- Q: How do I use the brush on different hair days?
- A: The brush can be used on all hair days. It is recommended to use the brush on dry hair and to use a lower temperature for every day.
- Q: How do I use the brush on different hair nights?
- A: The brush can be used on all hair nights. It is recommended to use the brush on dry hair and to use a lower temperature for every night.
- Q: How do I use the brush on different hair weeks?
- A: The brush can be used on all hair weeks. It is recommended to use the brush on dry hair and to use a lower temperature for every week.
- Q: How do I use the brush on different hair months?
- A: The brush can be used on all hair months. It is recommended to use the brush on dry hair and to use a lower temperature for every month.
- Q: How do I use the brush on different hair years?
- A: The brush can be used on all hair years. It is recommended to use the brush on dry hair and to use a lower temperature for every year.

[TYMO Hair Straightener Brush FAQ and Usage Guide](#)

Frequently asked questions and usage instructions for the TYMO hair straightening brush, covering topics like hair types, temperature settings, cleaning, and guarantees.