

Tekstap AALB-BC

Tekstap Smart RGBIC Ambiance Light Bar User Manual

Model: AALB-BC | Brand: Tekstap

1. INTRODUCTION

Thank you for choosing the Tekstap Smart RGBIC Ambiance Light Bar. This device is designed to enhance your entertainment experience with dynamic, customizable lighting. Featuring RGBIC technology, Wi-Fi connectivity, and compatibility with voice assistants like Alexa and Google Assistant, these light bars offer a versatile solution for creating immersive atmospheres for gaming, movies, music, and more.

This manual provides essential information for the safe and efficient use of your new light bars. Please read it thoroughly before installation and operation, and retain it for future reference.

2. PACKAGE CONTENTS

Please check the package for the following items:

- Tekstap Smart RGBIC Ambiance Light Bars (2 units)
- Power Adapter
- Base Stands (2 units)
- 3M Adhesive Pads (for alternative mounting)
- User Manual



Image: Contents of the Tekstap Smart RGBIC Ambiance Light Bar package, showing the two light bars, their stands, the power adapter, and the instruction manual.

3. SAFETY INFORMATION

- Ensure the power supply voltage is compatible with the device.
- Do not expose the device to water or high humidity.
- Avoid direct exposure to sunlight or high temperatures.
- Do not attempt to disassemble or repair the device yourself. Contact customer support for assistance.
- Keep out of reach of children.
- Use only the provided power adapter.

4. SETUP

4.1 Installation Methods

The Tekstap Smart RGBIC Ambiance Light Bars offer two primary installation methods:

1. **Using Base Stands:** Attach the light bars to the provided base stands. These allow for vertical placement on a desk or horizontal placement behind a screen.
2. **Using 3M Adhesive Pads:** For a more permanent setup, attach the light bars directly to the back of your

TV or PC using the strong 3M adhesive pads. Ensure the surface is clean and dry before application.



Image: Demonstrates flexible placement options for the light bars, including vertical on a desk and horizontal behind a television screen.

4.2 Connecting to Power

Connect the light bars to the power adapter and then plug the adapter into a standard electrical outlet.

4.3 Smart Life App Installation and Pairing

1. **Download the App:** Search for "Smart Life" in your smartphone's app store (iOS or Android) and download the application.
2. **Register/Log In:** Open the Smart Life app and register for a new account or log in if you already have one.
3. **Enter Pairing Mode:** Power on the light bars. If they do not automatically enter pairing mode (indicated by a flashing light), press and hold the power button on the control unit for several seconds until the lights begin to flash rapidly.
4. **Add Device:** In the Smart Life app, tap the "+" icon to add a new device. Select "Lighting" then "Light Source (Wi-Fi)" or allow the app to auto-discover the device.

5. **Connect to Wi-Fi:** Follow the on-screen instructions to connect the light bars to your 2.4GHz Wi-Fi network. *Note: This device does not support 5GHz Wi-Fi networks.*
6. **Pairing Complete:** Once connected, the light bars will stop flashing and appear in your Smart Life app. You can then rename the device for easier control.

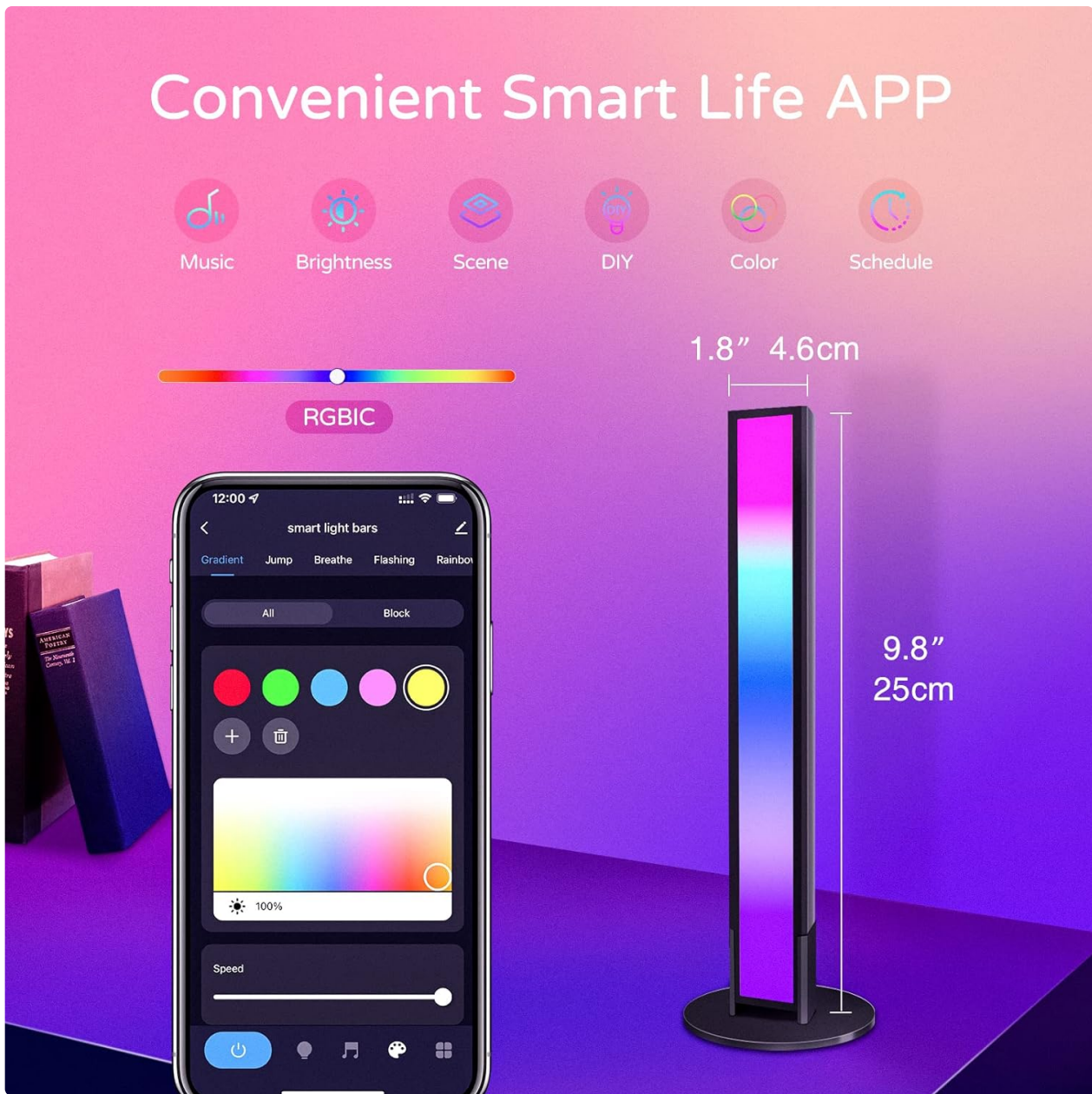


Image: The Smart Life app interface on a smartphone, demonstrating options for music, brightness, scene, DIY, color, and schedule control for the light bars. Product dimensions are also shown.

5. OPERATING INSTRUCTIONS

5.1 Basic Control (Manual)

The light bars feature a control unit with buttons for basic functions:

- **Power Button:** Press to turn on/off. Long press to enter pairing mode.
- **Mode Button:** Cycle through preset lighting modes.
- **Brightness Buttons:** Adjust the brightness level.

5.2 Smart Life App Control

The Smart Life app provides comprehensive control over your light bars:

- **Color Selection:** Choose from 16 million colors using the color wheel.
- **Brightness Adjustment:** Precisely control the light intensity.
- **Scene Modes:** Select from over 10 preset scene modes (e.g., Movie, Date, Sunset, Romantic, Christmas Eve, Colorful, Dynamic, Dream, Rainbow, Flowing Water) to instantly change the ambiance. You can also create and save your own DIY scene modes.
- **Music Sync Mode:** Activate the music mode to synchronize the lights with audio from your TV, PC, or surrounding environment via the built-in microphone. Choose from 4 music modes: Vivid, Rhythm, Strike, and Vibrate.
- **Scheduling:** Set timers to automatically turn the lights on or off at specific times.



Image: A living room setup showing the light bars behind a television, illustrating various preset scene modes available for different activities like movies, dates, or music.

オンまたはオフにする時間を設定する

一定期間にわたってスイッチを制御するスケジュールを作成できます



Image: A smartphone screen showing the scheduling feature within the app, allowing users to set specific times for the light bars to turn on or off automatically.

5.3 Voice Control (Alexa/Google Assistant)

Integrate your Tekstap Smart RGBIC Ambiance Light Bars with Amazon Alexa or Google Assistant for hands-free control:

1. **Link Smart Life Account:** In your Alexa or Google Home app, navigate to the "Skills" or "Works with Google" section. Search for "Smart Life" and enable the skill/service. Log in with your Smart Life account credentials.
2. **Discover Devices:** Once linked, ask your voice assistant to "Discover devices" or manually add them through the app.
3. **Voice Commands:** You can now control your light bars using voice commands. Examples include:
 - "Alexa, turn on the Light Bar."
 - "Hey Google, set Light Bar to blue."
 - "Alexa, dim the Light Bar to 50%."
 - "Hey Google, change Light Bar to romantic scene."



Image: A user relaxing on a couch, controlling the light bars behind a TV using voice commands through an Amazon Echo device, demonstrating Alexa and Google Assistant compatibility.

6. MAINTENANCE

- **Cleaning:** Use a soft, dry cloth to clean the surface of the light bars. Do not use abrasive cleaners or solvents.
- **Storage:** If storing the device for an extended period, disconnect it from power and store it in a cool, dry place.
- **Firmware Updates:** Periodically check the Smart Life app for any available firmware updates to ensure optimal performance and access to new features.

7. TROUBLESHOOTING

Problem	Possible Cause	Solution
Light bars do not turn on.	No power, loose connection.	Check power adapter connection and wall outlet. Ensure the power button is pressed.
Cannot connect to Wi-Fi.	Incorrect Wi-Fi password, 5GHz network, device not in pairing mode.	Ensure correct 2.4GHz Wi-Fi network and password. Put device into pairing mode (flashing lights). Move closer to the router.
Voice control not working.	Smart Life skill not enabled, incorrect device name, no internet connection.	Ensure Smart Life skill is enabled and linked in Alexa/Google Home app. Verify device name. Check internet connection.
Lights are unresponsive.	Temporary glitch, app issue.	Restart the light bars by unplugging and replugging. Close and reopen the Smart Life app.

8. SPECIFICATIONS

Feature	Detail
Brand	Tekstap
Model Number	AALB-BC
Product Dimensions	8 x 4.6 x 26.6 cm (per bar)
Weight	580 g (total package)
Color	Multi-colored (RGBIC)
Shade Material	Polycarbonate
Switch Type	Touch, App, Voice
Connectivity	Wi-Fi (2.4GHz only)
Voice Assistant Compatibility	Amazon Alexa, Google Assistant
Special Features	RGBIC Technology, Music Sync, 10+ Scene Modes, DIY Modes, Scheduling

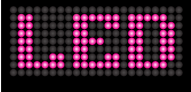
9. WARRANTY AND SUPPORT

Tekstap products are designed for reliability and performance. For warranty information and customer support, please refer to the contact details provided on the product packaging or visit the official Tekstap website. Please have your model number (AALB-BC) and purchase information ready when contacting support. For further assistance, you may also refer to the [Tekstap Brand Store](#).

© 2023 Tekstap. All rights reserved.

Related Documents - AALB-BC

LED Display
User Guide



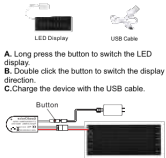
JTPD-03-005

LED Display User Guide

Thanks for your purchase, there are some tips for the suit, please read carefully before use. Please refer to the instruction

manual of the corresponding product.

1.Product A



- Accessories
- (1) LED Display x 1
 - (2) USB Cable x 1
 - (3) User Guide x 1

1

LED Display User Guide

CAUTION:

- (1) Do not use a charger with an output voltage greater than 5V to charge the device.
- (2) The product is not waterproof, please do not expose to the sun and rain.
- (3) After fully charged, please stop charging in time.

2. Product B



- Accessories
- (1) LED Display x 1
 - (2) USB Display Controller x 1
 - (3) 3M Back Adhesive x 1
 - (4) User Guide x 1

- CAUTION:
- (1) Do not use an adapter with voltage over 5V to power the device.
 - (2) Do not use a computer or TV USB to power the device.
 - (3) The output current of the adapter cannot be lower than 2A.

2

LED Display User Guide

- Accessories
- (1) LED Display x 1
 - (2) USB Display Controller x 1
 - (3) 3M Back Adhesive x 1
 - (4) User Guide x 1

CAUTION:

- (1) Do not use an adapter with voltage over 5V to power the device.
- (2) Do not use a computer or TV USB to power the device.
- (3) The output current of the adapter cannot be lower than 2A.

3

LED Display User Guide

User Guide

1.Product Overview

This product is a flexible display package product. It is controlled by mobile phone APP, and supports modification of text, graffiti, animation, etc. Smart, lightweight and easy to use.

2.Basic Function

- (1) Thin and bendable, easy to use.
- (2) Mobile APP control.
- (3) Support for diy Text, Graffiti, Animation, etc.

3. App download

Please scan the QR code to download the app or you can search "CoolLED1248" in the App Store / Google play.



(3 in 1)

4

LED Display User Guide

If you cannot scan this 3 in 1 code, please check this two codes to download it.



iOS

Android

4. App Overview

CoolLED1248 is an APP dedicated to controlling the display screen, supporting functions such as text editing, hand-painted graffiti, DIY animation, music rhythm, etc. The operation is simple and convenient, and can be immediately displayed on the screen after modification.

Note: The APP operation interface of different display devices may be different, and the APP will be updated. The following operation instructions are for reference only, please refer to the actual operation interface.

5

LED Display User Guide

5. App Operation

- Run the application, the APP will request the necessary permissions, please allow.
- Then it will prompt "Allow Cool.ED1248 to enable Bluetooth?", please click "ALLOW".

As the dialog below:



- The application will automatically search the led display, and shows the device in the device list. If automatic search failed, please drop own the device list box, manually refresh.
- Click the device need to be connected, waiting for connection state change from connecting to the correction is successful. If connection problem occurs, please drop down the refresh to connect the device. If you want to disconnect from the device, click x.

6

LED Display User Guide

5.1 Device List



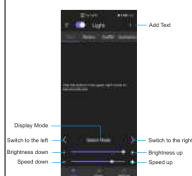
Note:
1. If you can't find the device, please pull down to refresh.

2. If the device cannot be found after multiple refreshes, please check whether the permission is turned on and switch the device again.

7

LED Display User Guide

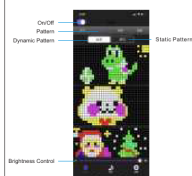
5.2 Main page



8

LED Display User Guide

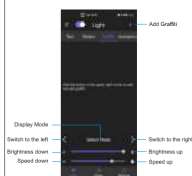
5.3 Pattern page



9

LED Display User Guide

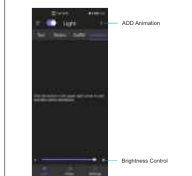
5.4 Graffiti page



10

LED Display User Guide

5.5 Animation page



11

LED Display User Guide

5.6 Music Mode



12

LED Display User Guide

For iPhone users, you need to manually add music to the APP through your computer. Please check this:
Transfer music files through Windows PC
1. Connect iPhone to Windows PC with USB.
2. In iTunes on Windows PC, click the iPhone button near the top left of the iTunes window.
3. Click File Sharing, select App (CoolLED1248) in the list, and transfer files from your computer to iPhone. Click Add, select the files you want to transfer, and then click Add.
Regarding the use of our APP, here we provide a demo video with detailed text explanations. You can use your mobile phone to scan the QR code below the text and view it in your browser.



12

LED Display User Guide

5.7 Mic Mode



[Tekstap Programmable LED Display User Guide - JTPD-03-005](#)

User guide for the Tekstap JTPD-03-005 programmable LED display, detailing setup, app control via CoolLED1248, and features like text, graffiti, animation, and music modes.

