



Manuals.plus /

› JOMISE /

› JOMISE G814 4K Mirror Dash Cam Instruction Manual

JOMISE G814

JOMISE G814 4K Mirror Dash Cam Instruction Manual

Brand: JOMISE | Model: G814 (Item Model Number: DAGD716)

1. PRODUCT OVERVIEW

The JOMISE G814 is an 11-inch 4K Rear View Mirror Camera designed as a pure evidence recorder. It operates without Wi-Fi or Bluetooth, ensuring no wireless interference and a straightforward user experience without the need for additional applications. This dash cam provides crystal-clear 4K front recording and 2.5K rear recording, capturing every detail for reliable video evidence. Its responsive touchscreen and intuitive controls make operation simple for any driver.



Image: JOMISE G814 4K Mirror Dash Cam with included components.

2. WHAT'S IN THE BOX

Please verify that all the following components are included in your package:

- 1 x 4K Mirror Camera & Car Charger
- 1 x 1080P Backup Camera & GPS Module
- 1 x Rear Camera Cable & Straps
- 1 x User Manual & 32GB Card
- 1 x Mount Bracket

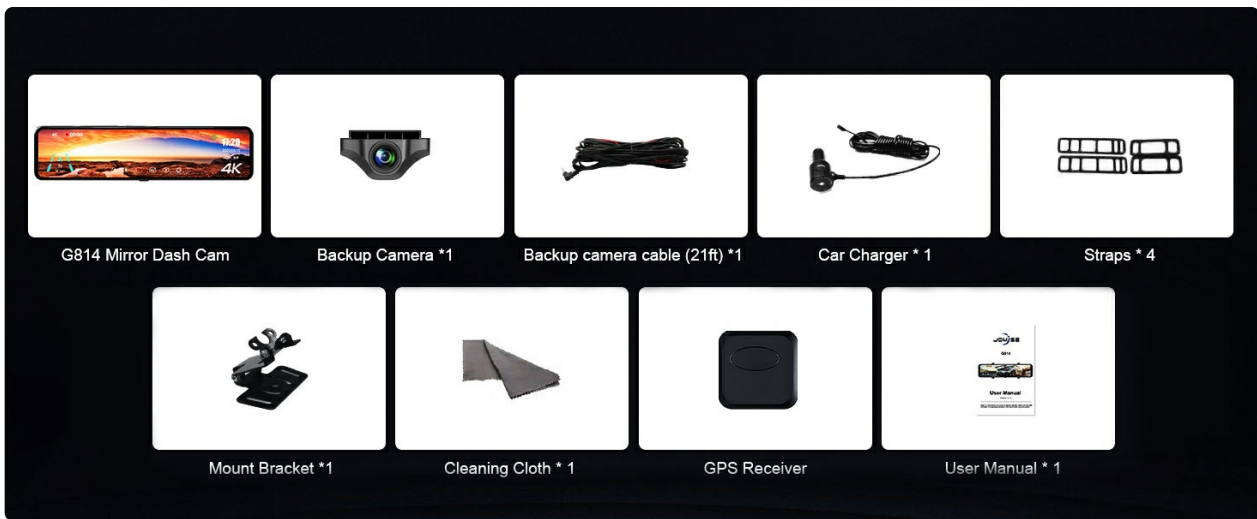


Image: All components included in the JOMISE G814 package.

3. SETUP AND INSTALLATION

The JOMISE G814 is designed for quick and easy strap-on installation, fitting most vehicles. Follow these steps for proper setup:

1. **Mount the Mirror Dash Cam:** Securely attach the 4K Mirror Camera over your existing rearview mirror using the provided straps. Ensure it is centered and stable.
2. **Connect the Rear Camera:** Route the rear camera cable from the main unit to the back of your vehicle. Connect the rear camera to the cable and mount it in a suitable position, typically above the license plate or inside the rear window.
3. **Connect the GPS Module:** Plug the GPS module into the designated GPS interface on the main unit. Position the module on your dashboard or windshield where it has a clear view of the sky for optimal signal reception.
4. **Connect Power:** Plug the car charger into your vehicle's 12V power outlet (cigarette lighter) and connect the other end to the Type-C port on the dash cam.
5. **Insert SD Card:** Insert the provided 32GB SD card (or a compatible card up to 128GB) into the memory card slot. Ensure it is inserted correctly until it clicks into place.

LAB-TESTED NIGHT VISION CLEAR EVEN AFTER DARK

Advanced F1.8 + F2.0 lenses reduce glare and capture sharp images in low light, ensuring safe driving day and night.



Image: Illustrates the strap-on installation of the mirror dash cam.

Why We Use Type-C Port?

It takes 9 months for JOMISE to complete the upgrade of the Type-C interface designed for dash cams. This new version is ultra-thin but with more functions. For example, it boasts 24 built-in pins, supports USB3.1 high-speed transmission and can be plugged and unplugged for at least 10,000 times. The traditional mini-USB interface with only 5 pins has 3%~5% power supply problem rate, but Type-C has successfully reduced this number to under 1%.



Image: Detailed view of the Type-C port, GPS interface, and rear camera connector.

4. OPERATING INSTRUCTIONS

4.1 Touchscreen Operation

The 11-inch IPS touchscreen offers responsive and intuitive controls. Simply tap or swipe to navigate menus and adjust settings. The device supports three display modes for ease of use.

Pure Evidence Recorder

- Easy to Operate Intuitive Touch Screen
- No App Required
- 4K UHD Recording
- G-Sensor
- Parking Monitoring

No cumbersome apps, easy to use

Support for double recording before and after

Professional 4K evidence to protect your legitimate rights and interests

Image: Demonstrates the simple touchscreen operation of the dash cam.

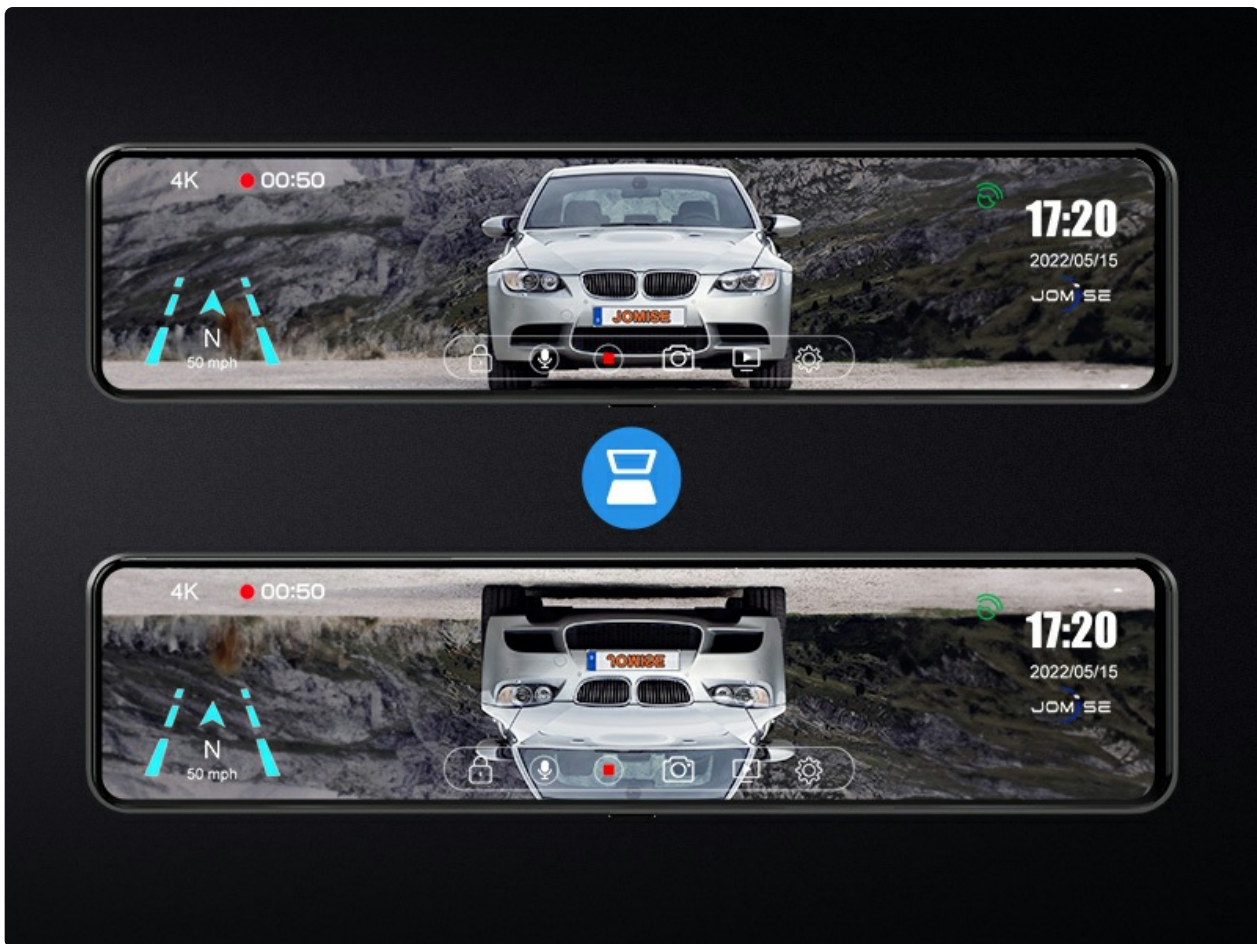


Image: Shows the dash cam display with both front and rear camera views.

4.2 Recording Functionality

The dash cam records in a continuous loop, ensuring that your footage is always up-to-date. When the memory card is full, the oldest unlocked videos are automatically overwritten.

- **Front Recording:** Captures video in 4K resolution.
- **Rear Recording:** Captures video in 2.5K resolution.

Front 4K

Rear 2.5K

Front and Rear Record

Unparalleled Definition, 4K Front and 2.5K Rear – Capture Every Detail

Image: Illustrates the dual recording capability of the dash cam.



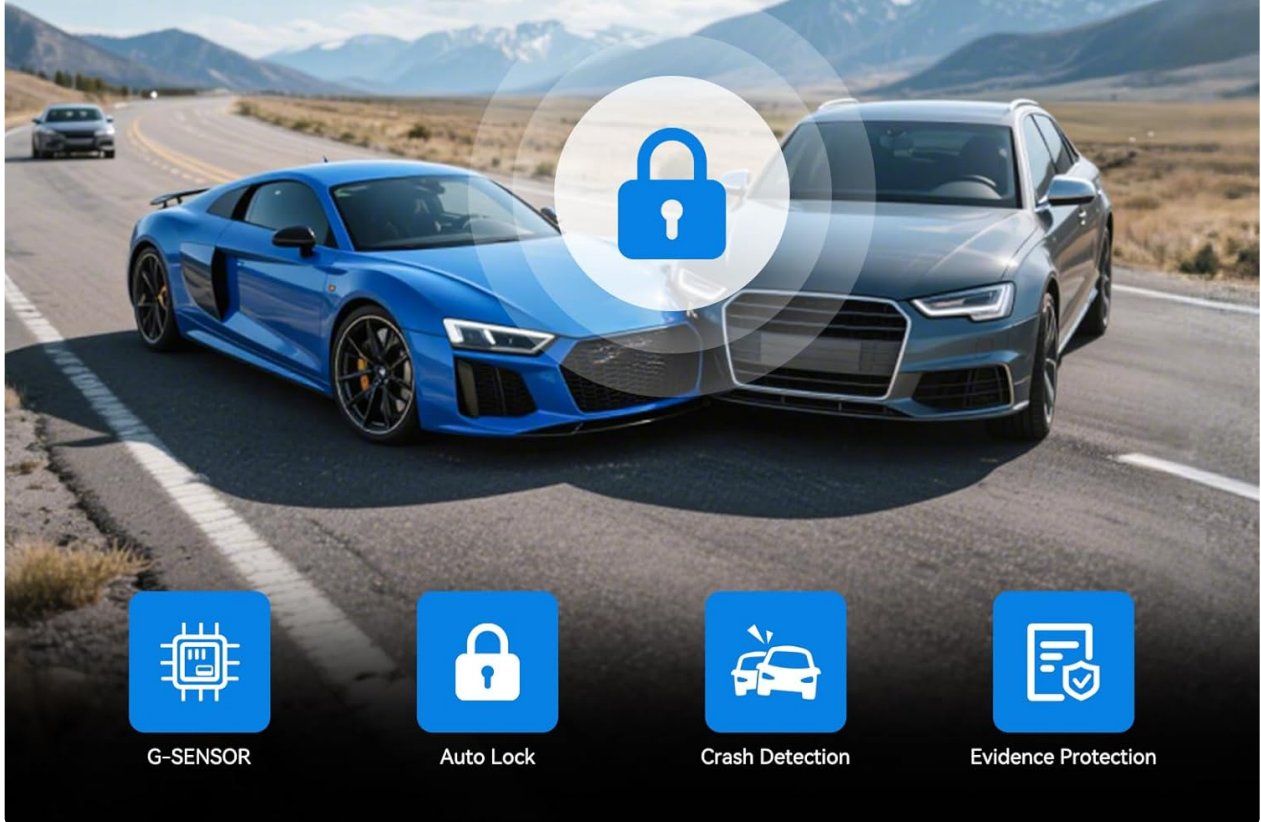
Image: Visual representation of continuous loop recording.

4.3 G-Sensor (Emergency Lock)

The built-in G-Sensor automatically detects sudden impacts or collisions. When an event is detected, the current video segment is locked and protected from being overwritten by loop recording, ensuring critical evidence is saved.

G-SENSOR Locks Important Footage

Built-in G-sensor auto-locks video during collision or sudden braking, keeping crucial evidence safe.



G-SENSOR



Auto Lock



Crash Detection



Evidence Protection

Image: Depicts the G-Sensor automatically locking footage during an impact.



Image: A lock icon symbolizing the G-Sensor's function to protect video files.

4.4 Parking Monitor

For 24-hour parking monitoring, an optional hardware kit (ASIN: B0B6TZSF9P) is required. When installed, the dash cam can monitor your vehicle even when parked, recording events like collisions or time-lapse footage.



Image: Visual representation of the 24-hour parking monitoring feature.

4.5 3X Zoom & Ultra-Wide View

The JOMISE G814 features an exclusive 3X rear zoom and an 11-inch ultra-wide view. This functionality assists in parking and driving, providing a wider and safer perspective, especially useful for tight spots, trailers, and blind zones.

3X ZOOM + 11-Inch Ultra-Wide View

Exclusive 3X rearview zoom and 11th screen. Capture more detail and a wider, safer view for driving and parking.

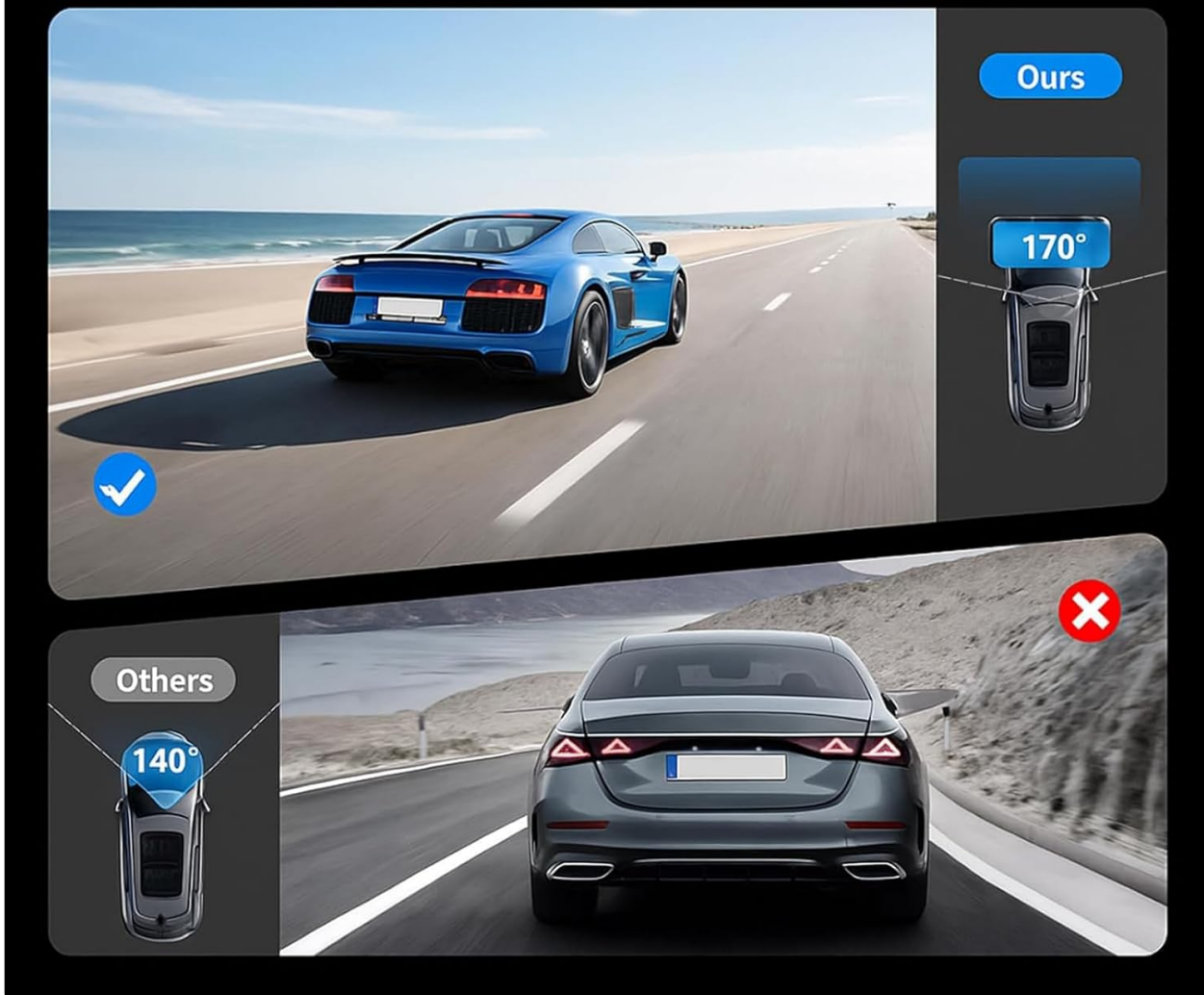


Image: Compares the ultra-wide view of the JOMISE G814 with other dash cams.

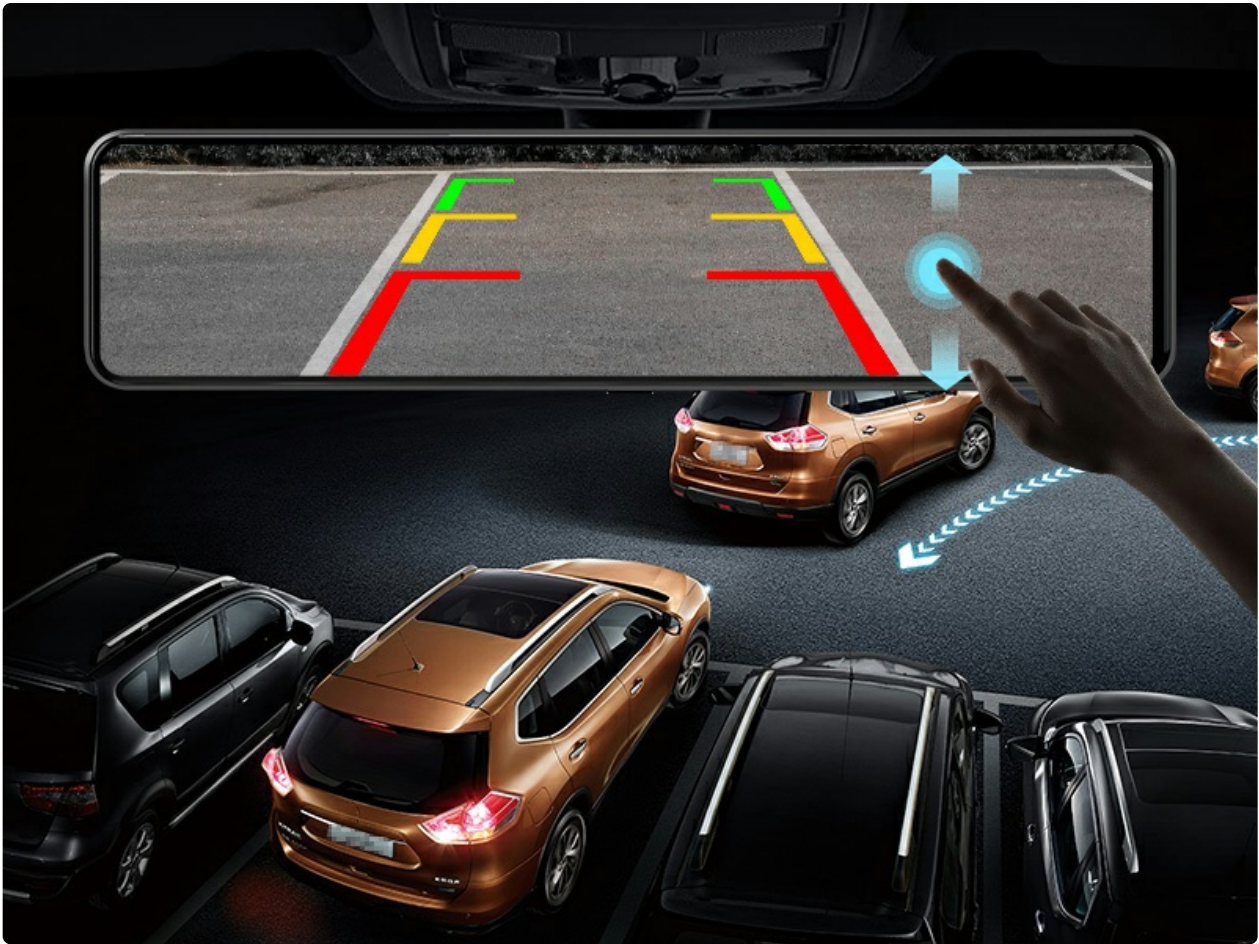


Image: Shows parking assist lines on the dash cam display for easier maneuvering.

4.6 Night Vision

Equipped with advanced F1.8 and F2.0 lenses, the G814 reduces glare and captures sharp images in low-light conditions, ensuring clear and safe driving day and night.

Why Choose G814 Built for True 4K Evidence Protection

Ours



Certification

4K + 2.5K lens

3X REAR ZOOM

Ultra-wide View

3X REAR ZOOM

LAB-TESTED NIGHT VISION

3X REAR ZOOM

TAMPER-PROOF EVIDENCE LOCK

3X REAR ZOOM

SMOOTH & RESPONSIVE TOUCH



Others



No certification

The 4K image is not clear

Ordinary lens

Narrow field of view

No certification

The image is blurry and has noise in low light conditions.

No certification

No automatic locking and video recording function

No certification

Jittery, sluggish operation.



Image: Demonstrates the clear night vision performance of the dash cam.

4.7 Wide Dynamic Range (WDR)

The WDR function optimizes video quality by eliminating excessively bright spots and correcting color balance, resulting in a clear image even in challenging lighting environments.

Too Dark

WDR

Too Bright



The WDR function eliminates excessively bright spots on the recording to correct its color balance in order to ensure a clear image.

Image: Illustrates how WDR balances exposure in varying light conditions.

4.8 GPS Functionality

The included GPS module allows the dash cam to record your driving route, speed, and location data. This information can be reviewed using compatible playback software on a computer, providing comprehensive evidence.



Image: Shows GPS data playback on a computer screen with map and driving information.

5. MAINTENANCE

- **Cleaning:** Use the provided cleaning cloth or a soft, dry cloth to wipe the screen and lenses. Avoid using abrasive cleaners or solvents.
- **SD Card Care:** Regularly format the SD card (at least once a month) within the dash cam's settings to ensure optimal performance and prevent data corruption. Use a high-quality, high-speed (Class 10 or U3) SD card.
- **Temperature:** Avoid exposing the dash cam to extreme temperatures for prolonged periods, as this can affect battery life and component integrity.
- **Firmware Updates:** Check the official JOMISE website periodically for any available firmware updates to ensure your device has the latest features and bug fixes.

6. TROUBLESHOOTING

- **Dash Cam Not Powering On:**
 - Ensure the car charger is securely plugged into both the dash cam and the vehicle's 12V power outlet.

- Check the vehicle's 12V power outlet for power (e.g., by plugging in another device).
- Verify the car charger cable is not damaged.
- **Recording Issues (e.g., freezing, skipping frames):**
 - Format the SD card regularly.
 - Ensure you are using a high-speed (Class 10 or U3) SD card from a reputable brand.
 - The SD card may be full; replace it or format the existing one.
- **Date/Time is Incorrect:**
 - Ensure the GPS module is properly connected and has a clear view of the sky. The GPS module automatically updates the date and time.
 - If the issue persists, manually set the date and time in the dash cam's settings.
- **Image is Blurry or Unclear:**
 - Clean the camera lenses with a soft cloth.
 - Ensure the protective film has been removed from the lenses.
 - Check if the camera is securely mounted and not vibrating.
- **Sun Visor Interference:**
 - Due to the 11-inch size of the mirror dash cam, some vehicle models, particularly those with larger or lower-set sun visors, may experience interference when the sun visor is lowered. This is a design consideration for larger screens and may not be resolvable by adjustment. Consider the dimensions of your vehicle's interior before purchase.

7. SPECIFICATIONS

Feature	Detail
Product Dimensions	2.75 x 10 x 1 inches
Item Weight	1.54 pounds
Item Model Number	DAGD716
Brand	JOMISE
Model Name	G814
Orientation	Front & Rear
Vehicle Service Type	Car, Pickup, SUV, Sedan, Truck
Connectivity Technology	USB
Special Features	4K+2.5K Loop Recording, Built-In GPS, G-Sensor, Night Vision, Parking Monitor
Video Capture Resolution	4K Front and 1080P Rear
Mounting Type	Rearview Mirror Mount
Color	Black
Visible Screen Diagonal	11" / 28 cm

8. WARRANTY AND SUPPORT

JOMISE is committed to providing reliable products and excellent customer service. Your G814 dash cam comes with the following:

- **12 Months Warranty:** Enjoy peace of mind with a one-year warranty covering manufacturing defects.
- **7 Days Return Policy:** If you are not satisfied with your purchase, you may return it within 7 days of receipt.
- **Return on Defects:** Products with confirmed defects are eligible for return.

For any inquiries or support, please contact us:

- **Email:** jomise-us@jomise-cam.com
- **Phone:** +1 866 788 8775



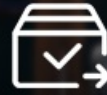
At JOMISE, we believe every journey is a story worth capturing. Rooted in innovation and driven by a passion for freedom, our dash cams are designed for explorers, commuters, and families alike. "Journey On, Easy Go" is more than a slogan — it's our promise of reliability, safety, and simplicity. Whether you're navigating daily traffic or embarking on a road trip, JOMISE empowers you to see more, remember more, and travel smarter. With sleek design, intuitive technology, and uncompromising quality, JOMISE is your trustworthy witness on every mile.



12 MONTHS
WARRANTY



7 DAYS
RETURN POLICY



RETURN
ON DEFECTS

Email: jomise-us@jomise-cam.com
Phone: +1 866 788 8775

Images: JOMISE warranty and support information.