

## ORICO CPB2

# ORICO Mobile CPU Stand CPB2 User Manual

Model: CPB2

### INTRODUCTION

---

This manual provides instructions for the proper setup, operation, and maintenance of your ORICO Mobile CPU Stand, model CPB2. This stand is designed to elevate your computer tower, improving airflow and mobility, while protecting it from dust and moisture on the floor.



Image: The ORICO Mobile CPU Stand CPB2, a black rectangular platform with four wheels, designed to hold a computer tower.

## SETUP

The ORICO Mobile CPU Stand requires minimal assembly. The main platform and four wheels are provided separately.

1. **Unpack Components:** Carefully remove the CPU stand platform and the four caster wheels from the packaging.
2. **Attach Wheels:** Locate the four designated slots on the underside of the ABS base. Insert the stem of each caster wheel firmly into these slots until they click into place. No tools are required for this step.
3. **Position Stand:** Place the assembled stand on a flat, stable surface.
4. **Place CPU Tower:** Carefully lift your computer tower and place it onto the stand. Ensure the tower is centered and stable within the stand's guardrails.

Your browser does not support the video tag.

Video: An official ORICO video demonstrating the assembly and use of the computer tower stand, including how to attach the wheels and place a PC on it.

## FEATURES

- **Universal Fit:** Designed to accommodate most ATX/microATX desktop towers with internal dimensions up to 17.91" x 8.74", supporting weights up to 55 lbs. Recommended for tower widths within 8.5 inches.
- **Protective Guardrails:** Features integrated ABS frame with 0.86" guardrails on three sides to securely hold your CPU tower and prevent accidental drops during movement.
- **Enhanced Airflow:** Elevates the CPU tower off the floor, promoting better air circulation and helping to prevent dust buildup, contributing to longer device lifespan.
- **Silent & Smooth Mobility:** Equipped with four high-quality rubber casters, two of which are lockable, for quiet and effortless movement across various floor types, including carpet and hard surfaces.
- **Durable Construction:** Made from one-piece Acrylonitrile Butadiene Styrene (ABS) material, offering a balance of lightweight portability and long-lasting durability.

## Strictly Selected ABS Material

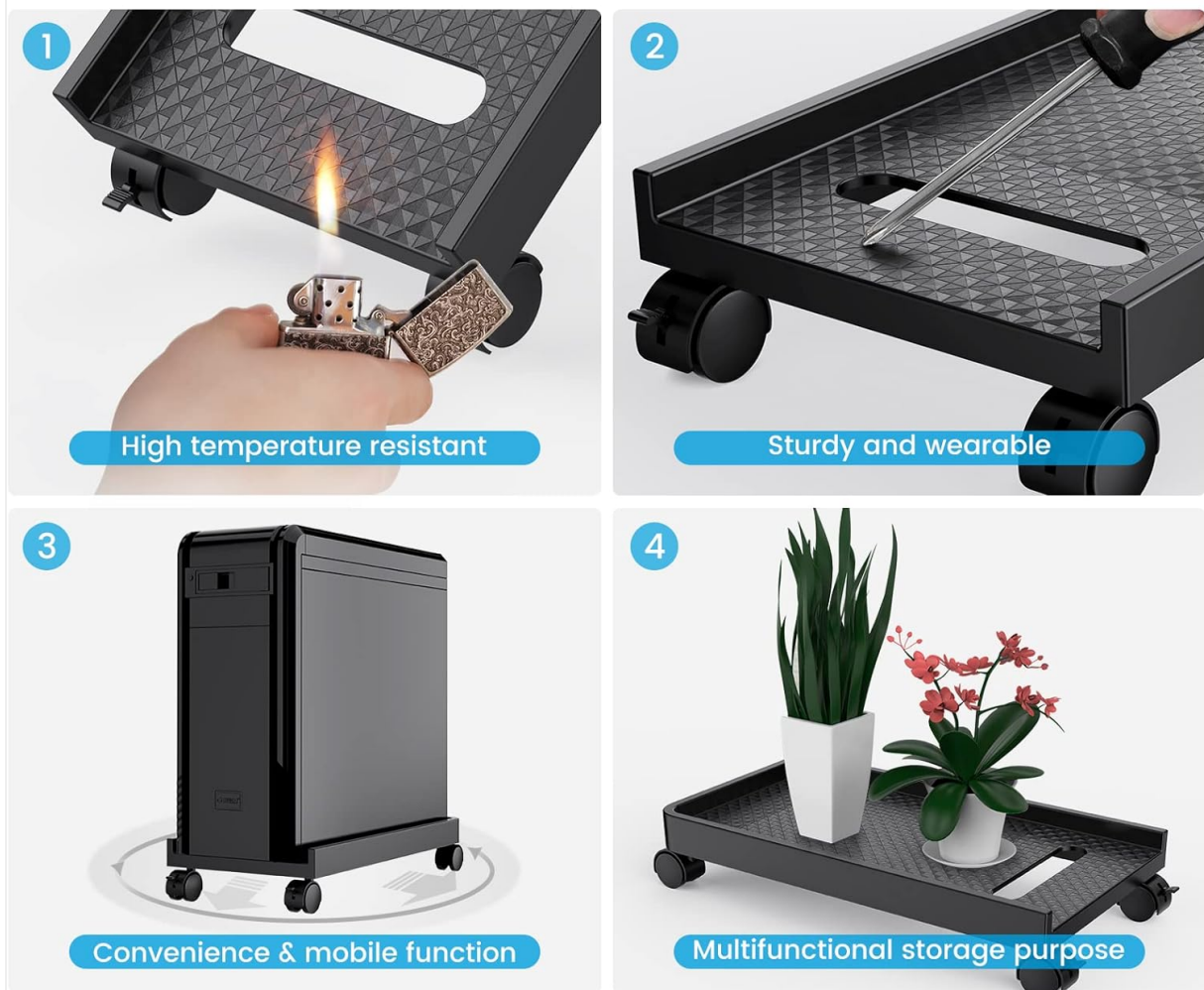


Image: Close-up view of the ORICO CPU Stand highlighting its ABS material, high temperature resistance, sturdiness, mobile function, and potential for multifunctional storage.

## OPERATION

- **Moving the Stand:** To move your computer tower, gently push or pull the stand. The four swivel wheels allow for easy repositioning.
- **Locking the Wheels:** For stability, two of the wheels are equipped with locking mechanisms. To lock a

wheel, push down on the small lever located on the wheel. To unlock, lift the lever. Ensure wheels are locked when the stand is in its desired stationary position to prevent unintended movement.



Image: A close-up showing the lockable wheels of the ORICO CPU Stand, demonstrating the ease of mobility and stability when locked.

## MAINTENANCE

- **Cleaning:** Wipe the stand with a soft, damp cloth to remove dust and dirt. Avoid using abrasive cleaners or solvents that may damage the ABS material.
- **Wheel Inspection:** Periodically check the wheels for any debris (e.g., hair, carpet fibers) that might hinder smooth movement. Clean as necessary.
- **Load Capacity:** Do not exceed the maximum weight capacity of 55 lbs to ensure the longevity and stability of the stand.



## DAMP-PROOF

This stand features four caster wheels for smooth motion and convenient placement, and it can raise your mainframe off the ground, to prevent moisture and dust.

Image: The ORICO CPU Stand with a computer tower, demonstrating how it elevates the PC from the floor, making cleaning easier and protecting against moisture and dust.

## TROUBLESHOOTING

Issue	Possible Cause	Solution
Stand is unstable or wobbly.	CPU tower exceeds recommended width or weight. Wheels not fully inserted.	Ensure CPU tower width is within 8.5 inches and weight is under 55 lbs. Verify all wheels are securely inserted into their slots.
Wheels do not roll smoothly.	Wheels are locked. Debris caught in wheels.	Unlock the wheels by lifting the levers. Inspect wheels for any obstructions and remove them.
Difficulty inserting wheels.	Incorrect alignment or insufficient force.	Align the wheel stem with the slot and apply firm, even pressure until it clicks.

## SPECIFICATIONS



Feature	Detail
Model Number	CPB2
Material	Acrylonitrile Butadiene Styrene (ABS)
Product Dimensions (L x W x H)	18.3 x 9.84 x 1.57 inches
Internal Tower Dimensions (Max)	17.91" x 8.74" (Recommended width within 8.5")
Item Weight	1.67 pounds
Weight Capacity (Max)	55 lbs
Special Feature	Adjustable (referring to width accommodation within limits)
Assembly Required	Yes (Tool-free wheel attachment)



Image: An overhead view of the ORICO CPU Stand with key dimensions labeled, including length, width, and height, and a note about recommended CPU width.

WARRANTY AND SUPPORT

For warranty information or technical support, please refer to the official ORICO website or contact ORICO customer service directly. Keep your purchase receipt for warranty claims.