

SONGZHIHAO 1.1inch/28mm

SONGZHIHAO Automatic Curling Iron User Manual

Model: 1.1inch/28mm

1. INTRODUCTION

Thank you for choosing the SONGZHIHAO Automatic Curling Iron. This device is designed to help you create beautiful curls with ease, featuring advanced ceramic technology, adjustable temperature settings, and dual voltage for versatile use. Please read this manual thoroughly before operation to ensure safe and effective use and to achieve optimal results.

2. SAFETY INFORMATION

WARNING: Read all instructions before use. Failure to follow these instructions may result in electric shock, fire, or serious injury.

- Always ensure your hands are dry when plugging in or unplugging the appliance.
- Do not use this appliance near water, in a bathroom, or near a sink.
- Keep the appliance away from children.
- The curling iron barrel becomes very hot during use. Avoid direct contact with skin.
- Always place the hot appliance on a heat-resistant surface.
- Unplug the appliance immediately after use and allow it to cool completely before storing.
- This appliance features an automatic shut-off function that turns off the device after 60 minutes of inactivity for added safety.
- Do not operate the appliance with a damaged cord or plug. If damaged, contact customer support.

3. PRODUCT OVERVIEW

The SONGZHIHAO Automatic Curling Iron is engineered for efficient and safe hair styling. Key features include:

- **Advanced Ceramic Technology:** Ensures even heat distribution and minimizes hair damage.
- **Adjustable Temperature:** A range from 210°F to 410°F (approximately 99°C to 210°C) to suit various hair types.
- **Dual Voltage:** Compatible with 110V and 220V power outlets, ideal for travel.
- **1.1-Inch (28mm) Barrel:** Perfect for creating loose waves or tight curls.
- **LCD Display:** For easy temperature monitoring and adjustment.
- **Automatic Shut-off:** Powers off after 60 minutes of inactivity.
- **360° Rotation:** Supports both left and right rotation for versatile curling.
- **Anti-Scald Design:** Features a cool tip for safe handling.



Figure 1: SONGZHIHAO Automatic Curling Iron. This image displays the purple automatic curling iron with its barrel and control buttons, alongside a woman with styled wavy hair, illustrating the product's purpose.



Figure 2: Product Features Diagram. This diagram highlights various features of the curling iron, such as its advanced ceramic material, automatic shutdown, rapid heating capability, 360-degree rotating curler, clear digital LED display, and long power cable.

4. SETUP

1. **Unpack:** Carefully remove the curling iron from its packaging. Retain packaging for storage or future transport.
2. **Inspect:** Check the appliance for any signs of damage. Do not use if the cord, plug, or appliance itself is damaged.
3. **Placement:** Place the curling iron on a flat, heat-resistant surface away from flammable materials.
4. **Plug In:** Connect the power cord to a suitable electrical outlet (110V-240V compatible).

5. OPERATING INSTRUCTIONS

Follow these steps to achieve desired curls:

1. **Power On:** Long press the power button to turn on the curling iron. The LCD display will illuminate.
2. **Set Temperature:** Use the temperature adjustment buttons (usually '+' and '-') to select your desired heat setting. The temperature range is 210°F to 410°F.
3. **Heat Up:** Allow the curling iron to heat up. It reaches the set temperature in approximately 30 seconds. The LCD display will show the current temperature.
4. **Prepare Hair:** Ensure your hair is dry and detangled. Section your hair into manageable strands, typically 1-inch wide.

5. Curl Hair:

- Take a section of hair and place the end into the curling iron's clamp.
- Press and hold the Left or Right arrow button to initiate automatic rotation. The hair will wrap around the barrel.
- Hold for 7-15 seconds, depending on your hair type and desired curl intensity.
- Release the clamp to free the curled strand.

6. **Repeat:** Continue with remaining hair sections until your desired style is achieved.

7. **Power Off:** After use, long press the power button to turn off the appliance. Unplug the curling iron from the outlet.

8. **Cool Down:** Allow the curling iron to cool completely on a heat-resistant surface before storing.

SUITABLE FOR VARIOUS OCCASIONS

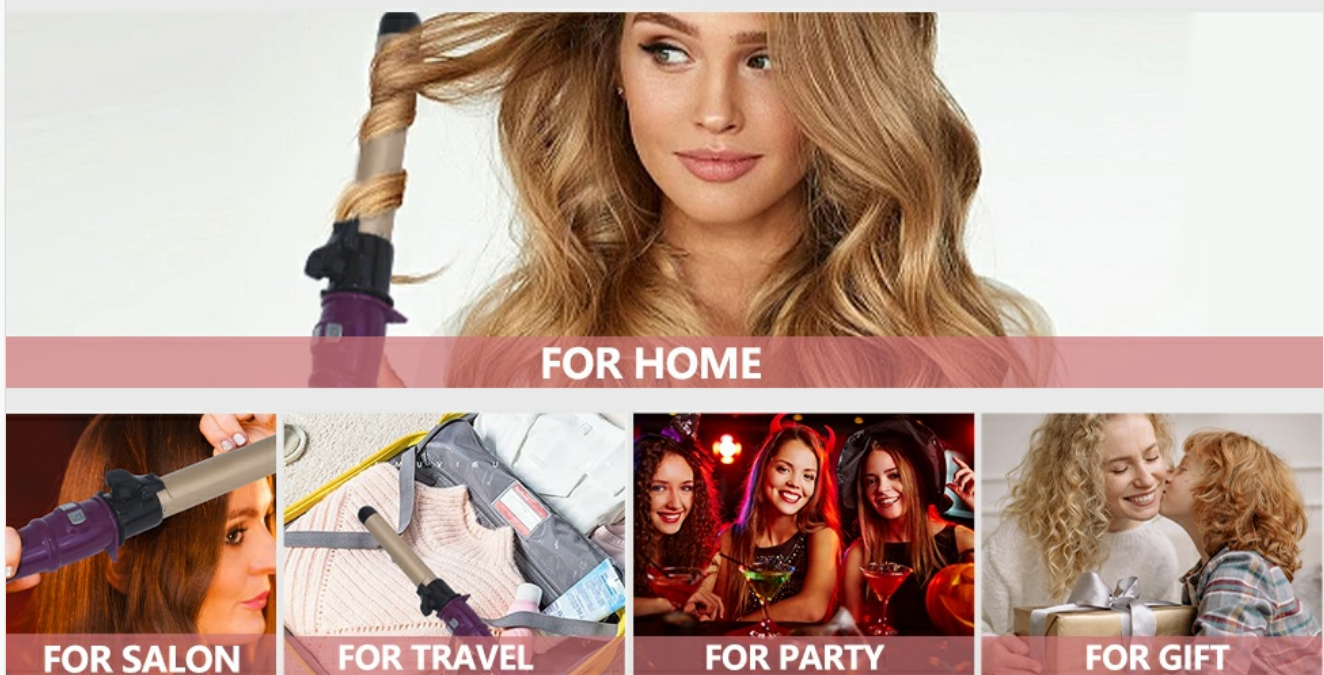


Figure 3: How to Use Automatic Curling Iron. This visual guide illustrates the four main steps for curling hair: 1) Long press power and heat up, then take a strand of hair; 2) Hold Left/Right arrow to rotate automatically; 3) Hold for 7-15 seconds, then loosen the curler clamp; 4) Repeat for other strands to finish gorgeous curls.

6. TEMPERATURE GUIDE

Selecting the correct temperature is crucial for effective styling and minimizing heat damage. Use the following as a general guide:

Hair Type	Recommended Temperature Range
Fine, Thin, or Damaged Hair	210°F - 300°F (99°C - 149°C)
Normal or Medium Hair	300°F - 370°F (149°C - 188°C)
Thick, Coarse, or Wavy Hair	370°F - 410°F (188°C - 210°C)

Always start with the lowest effective temperature and increase gradually if needed. Perform a test curl on a small

section of hair first.

7. MAINTENANCE

Proper maintenance ensures the longevity and performance of your curling iron.

- **Cleaning:** Ensure the appliance is unplugged and completely cool before cleaning. Wipe the barrel and handle with a soft, damp cloth. Do not use abrasive cleaners or harsh chemicals.
- **Storage:** Store the cooled curling iron in a dry place, away from moisture and direct sunlight. Do not wrap the power cord tightly around the appliance, as this can damage the cord.
- **Cord Care:** Regularly inspect the power cord for any signs of damage. If the cord becomes twisted, straighten it before use.

8. TROUBLESHOOTING

If you encounter issues with your SONGZHIHAO Automatic Curling Iron, refer to the following common problems and solutions:

Problem	Possible Cause	Solution
Curling iron does not turn on.	Not plugged in correctly, power outlet issue, or internal fault.	Ensure the plug is fully inserted into a working outlet. Try a different outlet. If still not working, contact customer support.
Curling iron does not heat up.	Temperature not set, or internal heating element issue.	Check the LCD display to ensure a temperature is set. Allow 30 seconds for heating. If no heat, contact customer support.
Automatic rotation is slow or not working.	Hair section too large, hair tangled, or motor issue.	Use smaller, detangled hair sections. Ensure hair is properly placed in the clamp. If the issue persists, contact customer support.
Hair slips out of the clamp.	Hair section too small or clamp not fully engaged.	Ensure a sufficient amount of hair is placed in the clamp and that it is securely closed.

If you experience a defective product or issues not covered here, please contact the seller for assistance.

9. SPECIFICATIONS

Feature	Detail
Brand	SONGZHIHAO
Model	1.1inch/28mm
Material	Tourmaline Ceramic
Max. Temperature Setting	230°C (446°F)
Adjustable Temperature Range	210°F - 410°F (approx. 99°C - 210°C)
Power Source	Corded Electric

Feature	Detail
Voltage	Dual Voltage (110V-240V)
Item Weight	450 Grams
Product Dimensions	38 x 2.8 x 2.8 cm
Heating Element	PTC
Automatic Shut-off	60 minutes of inactivity
Display	LCD
Rotation	360° (Left/Right)

10. WARRANTY AND SUPPORT

SONGZHIHAO is committed to customer satisfaction. If you receive a defective product or experience any issues, please contact the seller directly for assistance. We offer refunds or replacements for defective items to ensure your satisfaction. Your feedback is important to us.

For further support or inquiries, please refer to the contact information provided with your purchase or visit the official SONGZHIHAO store page on Amazon.

