

Manuals+

[Q & A](#) | [Deep Search](#) | [Upload](#)

[manuals.plus](#) /

› [leadjoy](#) /

› [Leadjoy VX2 AimBox Keyboard Mouse Adapter for PS4, Xbox One, Xbox Series X/S, Nintendo Switch, MnK Converter for Playing FPS, RTS, R6, Apex Legends](#)

leadjoy VX2 AimBox

Leadjoy VX2 AimBox Keyboard Mouse Adapter

Model: VX2 AimBox

Brand: leadjoy

INTRODUCTION

The Leadjoy VX2 AimBox is a versatile keyboard and mouse adapter designed to enhance your gaming experience on various console platforms. It allows players to use a keyboard and mouse for improved precision and control in games, particularly in FPS and RTS genres. This manual provides comprehensive instructions for setting up, operating, and maintaining your VX2 AimBox.



Image: The Leadjoy VX2 AimBox, a compact black device with red accents, shown with diagrams illustrating its compatibility with Xbox One, Xbox Series X/S, PlayStation 4, and Nintendo Switch consoles.

COMPATIBILITY

The Leadjoy VX2 AimBox is compatible with the following gaming consoles:

- Xbox One
- Xbox Series X/S
- PlayStation 4 (PS4)
- Nintendo Switch

Important Note: The Leadjoy VX2 AimBox is NOT compatible with PlayStation 5 (PS5).

Only single-function wired keyboards and mice are supported. Wireless devices (e.g., Logitech, Corsair) are generally incompatible.

SETUP GUIDE

Follow these steps to connect your Leadjoy VX2 AimBox to your console. Ensure all devices are powered off before making connections.

General Connection Diagram



Image: A visual representation of the Leadjoy VX2 AimBox connected to a keyboard, mouse, and a wired controller, with lines extending to different consoles including Xbox Series X/S, Xbox One, PS4, and Nintendo Switch.

Connecting to Xbox One / Xbox Series X/S

1. Connect your wired keyboard to one of the USB ports on the VX2 AimBox.
2. Connect your wired mouse to another USB port on the VX2 AimBox.
3. Connect your official Xbox One or Xbox Series X/S wired controller to the designated controller port on the VX2

AimBox.

4. Connect the VX2 AimBox to a USB port on your Xbox console.
5. Power on your Xbox console.

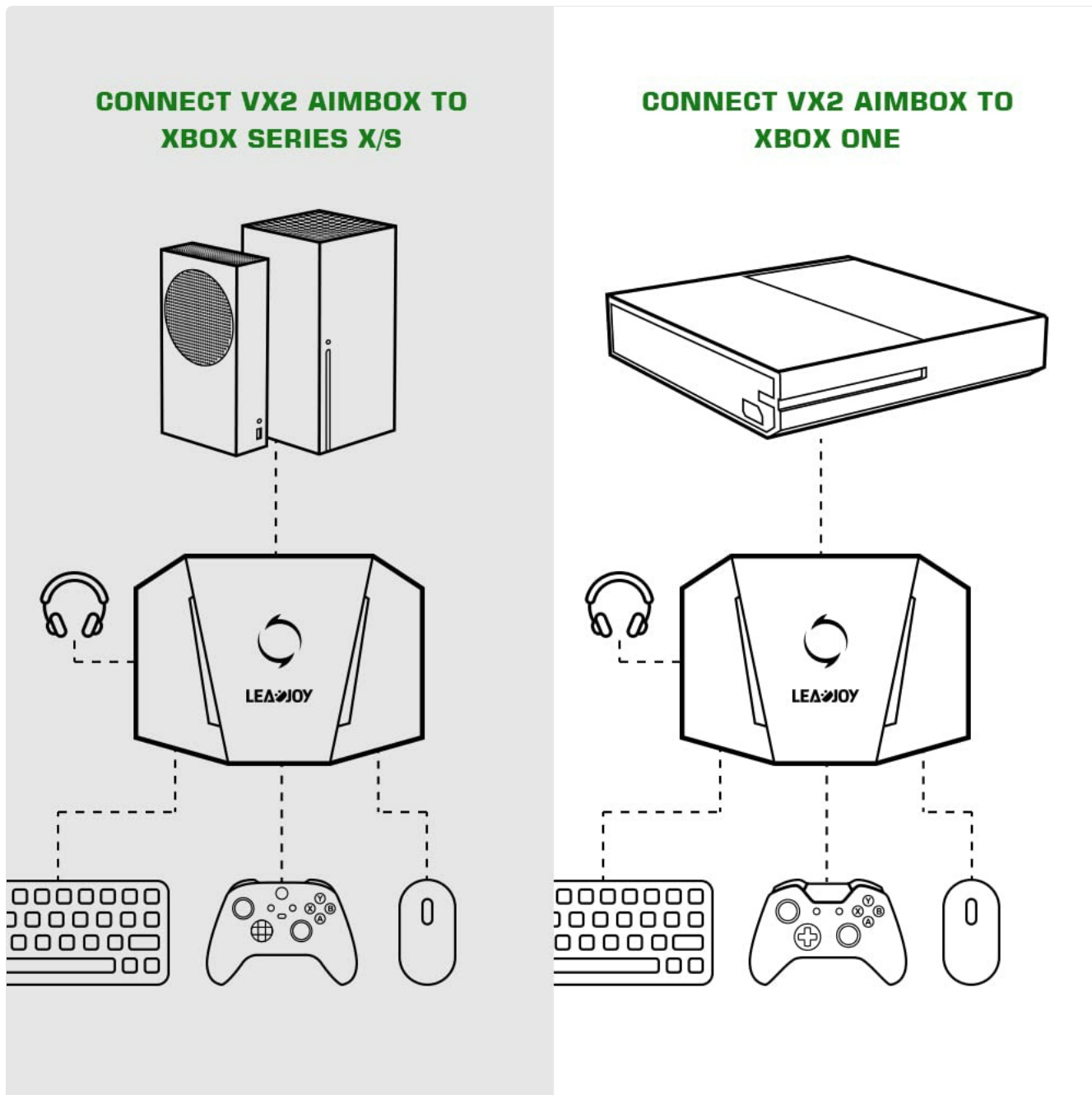


Image: A diagram illustrating the connection process for the VX2 AimBox to both Xbox Series X/S and Xbox One consoles, showing the adapter, headset, keyboard, mouse, and controller connections.

Connecting to PlayStation 4 (PS4)

1. Connect your wired keyboard to one of the USB ports on the VX2 AimBox.
2. Connect your wired mouse to another USB port on the VX2 AimBox.
3. Connect your official PS4 wired controller to the designated controller port on the VX2 AimBox. Ensure your PS4 controller's communication method is set to "Use USB Cable" in the console settings.
4. Connect the VX2 AimBox to a USB port on your PS4 console.
5. Power on your PS4 console.

Connecting to Nintendo Switch

1. Connect your wired keyboard to one of the USB ports on the VX2 AimBox.

2. Connect your wired mouse to another USB port on the VX2 AimBox.
3. Connect the VX2 AimBox to a USB port on your Nintendo Switch dock.
4. Ensure "Pro Controller Wired Communication" is enabled in your Switch settings (System Settings > Controllers and Sensors > Pro Controller Wired Communication).
5. Power on your Nintendo Switch.

CONNECT VX2 AIMBOX TO NINTENDO SWITCH

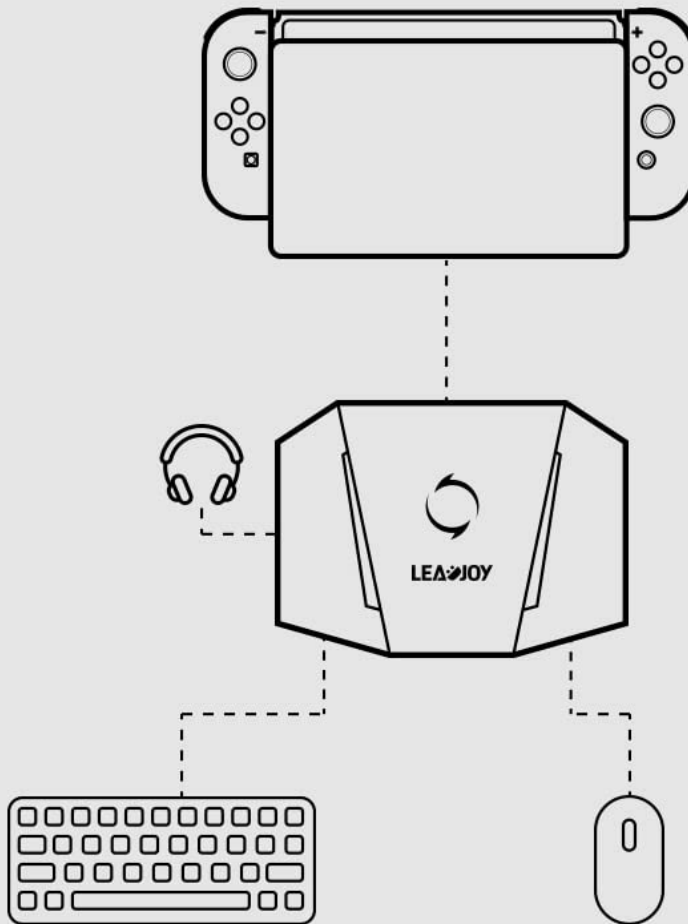


Image: A diagram illustrating the connection process for the VX2 AimBox to a Nintendo Switch, showing the adapter, headset, keyboard, and mouse connections.

VLead App Setup and Customization

The Leadjoy VX2 AimBox is designed for easy configuration via the "VLead" mobile application. This app allows for comprehensive customization of mouse, camera, joystick, keybinds, and lighting settings.

1. Download the "VLead" app from your mobile device's app store (available for iOS and Android).
2. Ensure your VX2 AimBox is connected to your console and powered on.
3. Open the VLead app and follow the on-screen instructions to connect to your VX2 AimBox.
4. Within the app, you can:

- Adjust mouse sensitivity and acceleration.
- Configure aiming down sights (ADS) settings.
- Map keyboard keys to controller functions.
- Customize joystick emulation.
- Adjust lighting effects on the VX2 AimBox (if applicable).



Image: A mobile phone screen displaying the VLead App interface, showing options for customizing mouse, ADS, joystick, keybinds, and lighting settings for a game like Call of Duty: Warzone.

OPERATING INSTRUCTIONS

Once the VX2 AimBox is connected and configured, you can begin using your keyboard and mouse for gaming.

Agility Translation Technology

The VX2 AimBox utilizes advanced Agility Translation Technology to provide 1:1 gaming accuracy. This technology ensures that your keyboard and mouse movements are translated precisely and with minimal latency to in-game actions, offering a responsive and accurate control experience.

3.5mm Headset Support

The VX2 AimBox includes a built-in 3.5mm headset jack. This allows you to connect your gaming headset directly to the adapter, enabling voice chat with teammates and real-time stereo sound from the game. This feature helps to reduce environmental noise and enhances immersion.



Image: The Leadjoy VX2 AimBox adapter with a gaming headset plugged into its 3.5mm audio jack, highlighting the audio support feature.

To use the headset feature, simply plug your 3.5mm headset into the dedicated port on the VX2 AimBox. Audio and microphone functions will be routed through the adapter to your console.

MAINTENANCE

To ensure the longevity and optimal performance of your Leadjoy VX2 AimBox, follow these simple maintenance guidelines:

- **Cleaning:** Use a soft, dry cloth to wipe down the exterior of the device. Avoid using liquid cleaners or abrasive materials.
- **Storage:** Store the device in a cool, dry place away from direct sunlight and extreme temperatures when not in use.
- **Handling:** Handle the device with care. Avoid dropping it or subjecting it to strong impacts.
- **Connectivity:** Ensure USB cables are inserted and removed gently to prevent damage to the ports.



Image: An exploded view of the Leadjoy VX2 AimBox, showing its internal components including the circuit board, counterweight, and silicone rubber foot pads, indicating its solid construction.

TROUBLESHOOTING

If you encounter issues with your Leadjoy VX2 AimBox, refer to the following common problems and solutions:

Problem	Solution
Device does not work after connection.	<ul style="list-style-type: none">• Ensure you have read the user manual thoroughly and followed all connection steps.• Verify that only single-function wired keyboards and mice are used. Wireless devices are incompatible.• For PS4, ensure the controller's communication method is set to "Use USB Cable" in console settings.• For Nintendo Switch, ensure "Pro Controller Wired Communication" is enabled in System Settings.• Try disconnecting and reconnecting all cables.• Test with different wired keyboards/mice if possible.
Input delay or lag experienced.	<ul style="list-style-type: none">• Adjust game settings: Increase in-game aim sensitivity.• Adjust mouse DPI: If your mouse has adjustable DPI, try increasing it.• Use the VLead App to fine-tune mouse, camera, and joystick settings for optimal responsiveness.• Ensure your keyboard and mouse are high-quality wired devices.
Headset audio or microphone not working.	<ul style="list-style-type: none">• Ensure the 3.5mm headset is fully plugged into the VX2 AimBox.• Check console audio settings to ensure output is routed correctly.• Test the headset directly with the console or another device to confirm it is functional.
VLead App cannot connect to the device.	<ul style="list-style-type: none">• Ensure the VX2 AimBox is powered on and connected to a console.• Check your mobile device's Bluetooth settings and ensure Bluetooth is enabled.• Restart both the VLead App and your mobile device.• Ensure the app is updated to the latest version.

SPECIFICATIONS

- **Model:** VX2 AimBox
- **Product Dimensions:** 3.15 x 2.28 x 0.73 inches
- **Item Weight:** 5.93 ounces
- **Manufacturer:** leadjoy
- **Connectivity:** USB (for console, keyboard, mouse, controller), 3.5mm audio jack
- **Compatibility:** Xbox One, Xbox Series X/S, PlayStation 4, Nintendo Switch (Not compatible with PlayStation 5)

- **Supported Peripherals:** Wired keyboards, wired mice, official wired controllers

WARRANTY AND SUPPORT

For detailed warranty information, please refer to the documentation included with your purchase or visit the official Leadjoy website.

Additional support and the full user manual in PDF format can be accessed via the following link: [leadjoy VX2 AimBox User Manual \(PDF\)](#)

For further assistance, please contact Leadjoy customer support through their official channels.