

## Avalla S-95

# Avalla S-95 Portable Air Conditioner User Manual

Model: S-95 | Brand: Avalla

## 1. INTRODUCTION

Thank you for choosing the Avalla S-95 Portable Air Conditioner. This 3-in-1 unit is designed to provide efficient cooling, dehumidification, and air circulation for your living spaces. With its powerful 7000 BTU cooling capacity, it can rapidly cool rooms up to 68m<sup>3</sup>. This manual provides essential information for the safe and effective operation, maintenance, and troubleshooting of your new appliance.

# Control your climate all year round

## 3-in-1

### Air conditioner

Creating comfort all summer long

### Dehumidifier

Extracts 20L of water per day, protecting your home

### Fan

Ensures consistent indoor circulation, keeping your air fresh



Figure 1.1: The Avalla S-95 unit showcasing its three primary functions: air conditioning, dehumidifying, and fan operation.

## 2. SAFETY INFORMATION

Please read all safety warnings and instructions carefully before using this appliance to prevent injury or damage. Keep this manual for future reference.

- **Electrical Safety:** Ensure the power supply matches the rating on the appliance label. Do not operate with a damaged cord or plug. Do not share the power outlet with other appliances.
- **Ventilation:** Always ensure proper ventilation when operating the unit in cooling mode by using the provided window vent kit. Do not block air inlets or outlets.
- **Refrigerant:** This unit uses R-290 refrigerant, which is flammable. Do not puncture the refrigerant circuit. Only qualified personnel should service the unit.
- **Placement:** Place the unit on a flat, stable surface. Maintain a minimum distance of 20cm from walls and other objects to ensure proper airflow.
- **Children and Pets:** Keep children and pets away from the appliance during operation. This appliance is not

intended for use by persons with reduced physical, sensory or mental capabilities unless supervised.

- **Cleaning:** Always unplug the unit before cleaning or performing any maintenance.
- **Water Drainage:** Ensure the water tank is regularly drained, especially when using the dehumidifier function, to prevent overflow.

## 3. PRODUCT OVERVIEW

---

### 3.1 Components

The Avalla S-95 Portable Air Conditioner comes with the following main components:

- Portable Air Conditioner Unit (S-95)
- Exhaust Hose
- Window Vent Kit (includes window bracket and adapters)
- Remote Control
- Drain Hose (for continuous drainage)



Figure 3.1: All main components included with the Avalla S-95 Portable Air Conditioner.

### 3.2 Control Panel and Remote Control

The unit features an intuitive digital display and touch controls on the top panel, along with a full-function remote control for convenient operation.



Figure 3.2: Top-down view of the S-95 control panel, showing the digital display and various function buttons.

### Key Controls:

- **Power Button:** Turns the unit on/off.
- **Mode Button:** Cycles through Cooling, Dehumidifier, and Fan modes.
- **Temperature Up/Down:** Adjusts the desired temperature in Cooling mode.
- **Fan Speed Button:** Selects between low and high fan speeds.
- **Timer Button:** Sets the 24-hour on/off timer.
- **Sleep Mode Button:** Activates sleep mode for quieter operation and gradual temperature adjustment.

## 4. SETUP

### 4.1 Unpacking

Carefully remove the unit and all accessories from the packaging. Retain the original packaging for future storage or transport.

### 4.2 Placement

Place the air conditioner on a firm, level surface in the room you wish to cool. Ensure there is at least 20cm of space around the unit for proper air circulation.



Figure 4.1: Proper placement of the S-95 unit in a room, demonstrating the exhaust hose connection to a window.

### 4.3 Window Vent Kit Installation

The window vent kit is essential for exhausting hot air outside when using the cooling mode.

1. Attach the exhaust hose adapter to one end of the exhaust hose.
2. Connect the other end of the exhaust hose to the exhaust outlet on the back of the air conditioner unit.
3. Assemble the window slider kit according to your window type (sliding, casement, or awning windows).
4. Insert the window exhaust adapter into the opening of the window slider kit.
5. Secure the window slider kit in your window opening, ensuring a tight seal to prevent hot air from re-entering the room.

Your browser does not support the video tag.

Video 4.1: An overview of Avalla Portable Air Conditioners, demonstrating various setup scenarios and window kit compatibility.



## 5. OPERATING MODES

The Avalla S-95 offers three primary operating modes: Cooling, Dehumidifier, and Fan.

### 5.1 Cooling Mode

This mode provides powerful air conditioning to lower room temperature.

- Press the **Power** button to turn on the unit.
- Press the **Mode** button until the cooling icon (snowflake) is displayed.
- Use the **Temperature Up/Down** buttons to set your desired temperature (range: 16°C to 32°C).
- Adjust fan speed using the **Fan Speed** button (Low/High).

# Powerful cooling performance

## Quickly cool rooms up to 68m<sup>3</sup>



**7000BTU**  
cool down to 16°C

**Accelerated**  
290m<sup>3</sup>/h cooling

Figure 5.1: The S-95 unit effectively cooling a large room, demonstrating its powerful performance.

### 5.2 Dehumidifier Mode

This mode removes excess moisture from the air, ideal for damp environments or drying clothes.

- Press the **Power** button to turn on the unit.
- Press the **Mode** button until the dehumidifier icon is displayed.
- The unit will automatically remove up to 20 litres of moisture per day.
- For continuous drainage, connect the provided drain hose to the drainage port and direct it to a suitable receptacle.

**Low cost air management**  
Class A energy rated

Efficient cooling at  
only 12p per hour

Uses environment safe R290 refrigerant  
for maximum thermal efficiency

Figure 5.2: The S-95 unit used in dehumidifier mode, effectively assisting in drying laundry.

### 5.3 Fan Mode

This mode circulates air without cooling or dehumidifying.

- Press the **Power** button to turn on the unit.
- Press the **Mode** button until the fan icon is displayed.
- Adjust fan speed using the **Fan Speed** button (Low/High).

### 5.4 Timer Function

Set the unit to automatically turn on or off within a 24-hour period.



- With the unit on or off, press the **Timer** button.
- Use the **Temperature Up/Down** buttons to set the desired hours (1-24).
- The timer will activate after the set time.

### 5.5 Sleep Mode

For quiet operation and comfortable sleep, activate Sleep Mode.

- While in Cooling mode, press the **Sleep Mode** button.
- The unit will operate at a lower fan speed and gradually increase the set temperature by 1°C per hour for the first two hours, then maintain that temperature.
- Operating noise level is approximately 52dB in this mode.



**No more shrinking clothes**

Save 82% on your energy bill compared to a tumble dryer

Safe dry technology avoids costly tumble drying by naturally extracting moisture as your delicates rest

**Safe dry**

**20L**  
per day

Figure 5.3: The S-95 unit operating quietly in a bedroom, ideal for undisturbed sleep.

## 6. MAINTENANCE

Regular maintenance ensures optimal performance and extends the lifespan of your Avalla S-95.



### 6.1 Cleaning the Air Filter

The S-95 is equipped with a washable air filter. Clean it every two weeks or more frequently depending on usage and air quality.

1. Unplug the air conditioner from the power outlet.
2. Locate the air filter panel (usually at the back or side of the unit).
3. Remove the filter.
4. Wash the filter under running water (warm, soapy water if very dirty).
5. Allow the filter to air dry completely before reinserting it into the unit.

### 6.2 Draining Water

The unit has an internal water tank that collects condensate. It will automatically shut off when full. For continuous operation, especially in dehumidifier mode, use the continuous drainage option.

- **Manual Drainage:** When the internal tank is full, the unit will stop operating and display an indicator. Place a shallow pan or tray under the drainage port (located at the bottom rear of the unit) and remove the drain plug to empty the water. Replace the plug securely.
- **Continuous Drainage:** Attach the provided drain hose to the continuous drainage port and direct the other end into a floor drain or a larger container. Ensure the hose is sloped downwards for proper gravity drainage.

### 6.3 Storage

Before storing the unit for an extended period:

1. Drain all water from the unit.
2. Clean the air filter.
3. Run the unit in fan-only mode for a few hours to dry the internal components.
4. Unplug the unit and coil the power cord neatly.
5. Store the unit in a cool, dry place, preferably in its original packaging.

## 7. TROUBLESHOOTING

Refer to this section for common issues and their solutions. If the problem persists, contact Avalla customer support.

Problem	Possible Cause	Solution
Unit does not turn on.	No power, power cord unplugged, circuit breaker tripped.	Check power connection, wall outlet, and circuit breaker.
Unit is not cooling effectively.	Window kit not properly sealed, air filter dirty, room too large, doors/windows open.	Ensure window kit is sealed, clean air filter, close doors/windows, consider room size.
Unit is noisy.	Unit not on a level surface, fan speed too high.	Place on a level surface, select lower fan speed or Sleep Mode.
Water leakage.	Drain plug loose, continuous drain hose kinked or blocked, internal tank full.	Check drain plug, ensure hose is clear and sloped, drain internal tank.
Remote control not working.	Batteries dead or incorrectly inserted, obstruction between remote and unit.	Replace batteries, ensure clear line of sight to the unit's receiver.

Your browser does not support the video tag.

Video 7.1: A detailed introduction to the Avalla S-95 Air Conditioner, highlighting its features and operational aspects.

## 8. SPECIFICATIONS

Feature	Detail
Model Number	S-95
Cooling Capacity	7000 BTU
Dehumidification Capacity	Up to 20 litres/day
Coverage Area	Up to 68m³ (50 square meters)
Power Source	Corded Electric
Voltage	230 Volts (AC)
Wattage	2100 watts (Max)
Energy Efficiency Rating	Class A
Noise Level	52 dB
Refrigerant	R-290 (Eco-friendly)
Product Dimensions (L x W x H)	31 x 31.5 x 70 cm
Item Weight	19.4 kg
Included Components	Window Bracket, Remote Control

# Ready, set, cool

## Easily set up, sit back and chill

Select your desired temperature with  
full function remote control  
or touch display

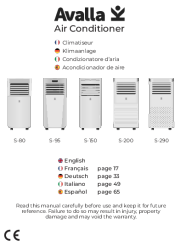
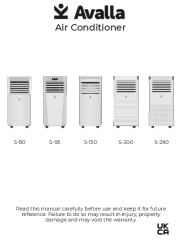



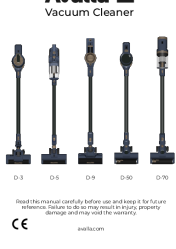
Compact, portable design  
on free-motion castors  
Window seal kit included

Figure 8.1: The S-95 unit's energy efficiency and eco-friendly refrigerant contribute to low operating costs.

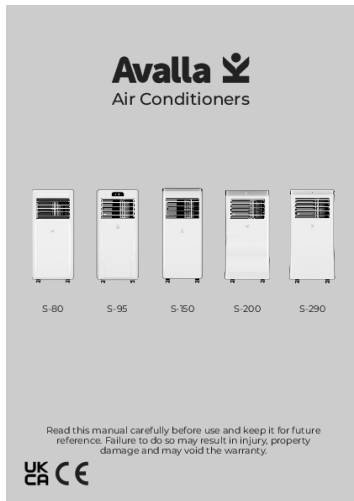
## 9. WARRANTY AND SUPPORT

Avalla stands behind the quality of its products. The Avalla S-95 Portable Air Conditioner comes with a **2-year warranty** from the date of purchase.

For any technical assistance, troubleshooting not covered in this manual, or warranty claims, please contact our UK-based customer support team. Details can be found on the official Avalla website or your purchase documentation.

	<p><a href="#">Avalla Air Conditioner User Manual: Models S-80 to S-290</a></p> <p>Comprehensive user manual for Avalla air conditioners, covering models S-80, S-95, S-150, S-200, and S-290. Includes setup, operation, maintenance, and safety guidelines.</p>
	<p><a href="#">Avalla Air Conditioner User Manual and Safety Guide</a></p> <p>Comprehensive user manual for Avalla Air Conditioners, covering setup, operation, maintenance, troubleshooting, and safety precautions for models S-80, S-95, S-150, S-200, and S-290.</p>
	<p><a href="#">Avalla Air Conditioner User Manual</a></p> <p>This manual provides detailed information on the features, operation, maintenance, and safety precautions for Avalla S-80, S-95, S-150, S-200, and S-290 air conditioners.</p>
	<p><a href="#">Avalla Dehumidifier Manual: X-95, X-125, X-150, X-200 - Operation &amp; Safety</a></p> <p>Comprehensive user manual for Avalla Dehumidifiers (models X-95, X-125, X-150, X-200). Includes quick start guides, operating instructions, troubleshooting, and safety precautions.</p>
	<p><a href="#">Avalla Air Conditioner Manual: S-50, S-220, S-360 User Guide</a></p> <p>Comprehensive user manual for Avalla S-50, S-220, and S-360 portable air conditioners. Includes setup, operation, maintenance, troubleshooting, and safety guidelines.</p>
	<p><a href="#">Avalla Vacuum Cleaner User Manual and Guide for D-3, D-5, D-9, D-50, D-70</a></p> <p>This comprehensive user manual provides detailed instructions for operating, cleaning, and maintaining Avalla D-3, D-5, D-9, D-50, and D-70 vacuum cleaners. Includes parts guides, assembly, operation, emptying, cleaning, charging, safety information, troubleshooting tips, and specifications.</p>



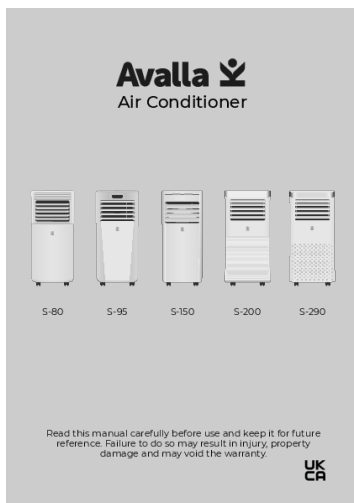


### [\[pdf\] User Manual Instructions Troubleshooting Guide Specifications Warranty](#)

Download manual Avalla Manuals Instructions Dehumidifiers Air Cons etc Conditioners Manual S 80 290  
avalla site docs manuals |||

Air Conditioners S-80 **S-95** S-150 S-200 S-290 Read this manual carefully before use and keep it for future reference. Failure to do so may result in injury, property damage and may void the warranty. Contents 04 Hose connection and setup 05 Parts guide: S-80 06 Parts guide: **S-95** 07 Parts guid...

lang:en **score:39** filesize: 2.6 M page\_count: 20 document date: 2025-01-06



### [Avalla Air Conditioner User Manual](#)

This manual provides detailed information on the features, operation, maintenance, and safety precautions for Avalla S-80, S-95, S-150, S-200, and S-290 air conditioners.

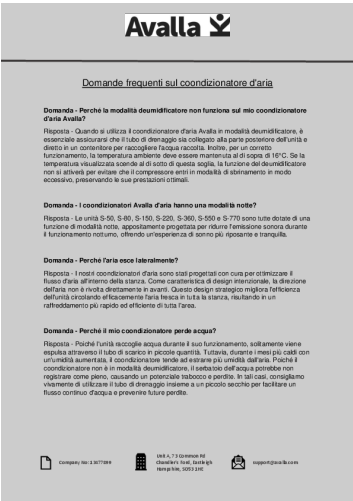
lang:en **score:29** filesize: 1.45 M page\_count: 16 document date: 2023-06-13



### [Avalla Air Conditioner User Manual and Safety Guide](#)

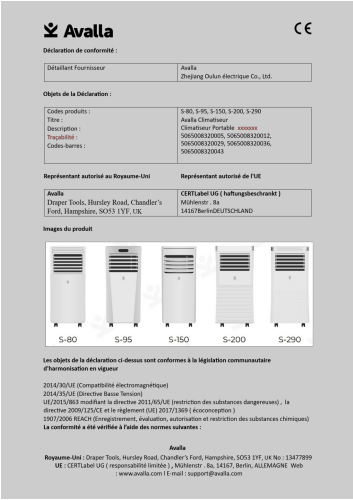
Comprehensive user manual for Avalla Air Conditioners, covering setup, operation, maintenance, troubleshooting, and safety precautions for models S-80, S-95, S-150, S-200, and S-290.

lang:en **score:20** filesize: 2.1 M page\_count: 16 document date: 2021-11-10



[pdf] Frequently Asked Questions

Jon King FAQ Avalla S 150 Condizionatore Portatile Deumidificatore 22L Classe Industriale 2345W 8000BTU Copertura Ampia 80m³ Amazon it Casa e cucina 61MfqLFxKwL m media amazon images I ||| Domande frequenti sul coondizionatore d aria Domanda - Perch la modalit deumidificatore non funziona ... 0, S-290, S-550 e S-770 sono dotate della funzione di blocco per bambini. Tuttavia, i modelli S-50, **S-95**, S-200 e S-360 non dispongono di questa funzione. Company No: 13477899 Unit A, 73 Common Rd C... lang:it **score:19** filesize: 74.42 K page\_count: 2 document date: 2023-10-02



[pdf] Label

Draper Tools Hursley Road Chandler s Ford Hampshire SO53SO53 1YF UK No 13477899 UE CERTLabel UG responsabilité limitée Mühlenstr 8a 14167 Berlin ALLEMAGNE Web avalla I E mail support 81dwQ7pZW4Lm media amazon images I 81dwQ7pZW4L ref dp product quick view ||| Dclara7on de conformit : Dtaillant Fournisseur Objets de la Dclara7on : Codes produits : Titre : Descrip on : Traabilit : Codes-barres : Avalla Zhejiang Oulun lectrique Co., Ltd. S-80, **S-95**, S-150, S-200, S-290 Avalla Clima seur Clima seur Portable xxxxxxxx 5065008320005, 5065008320012, 506500832002... lang:fr **score:18** filesize: 306.18 K page\_count: 4 document date: 2025-03-14



[pdf]

Jon King Questions fréquentes sur les climatiseurs Réponse En mode climatisation votre climatiseur Avalla ne détectera pas le réservoir comme étant plein ce qui peut entraîner l arrêt automatique de unité 61cSkGZsTDL m media amazon images I ||| Questions frquentes sur les climatiseurs Question - Pourquoi le dshumidificateur ne fonctionne-t-il ... S-550 et S-770 sont quips d une fonction de verrouillage pour enfants. Cependant, les modles S-50, **S-95**, S-200 et S-360 ne disposent pas de cette fonction. Company No: 13477899 Unit A, 73 Common Rd... lang:fr **score:18** filesize: 75.24 K page\_count: 2 document date: 2023-10-03

**Question - Why does the dehumidifier not work on my Air-Conditioner?**

**Answer -** When utilizing your Avalla Air Conditioner in dehumidify mode, it is essential to ensure that the constant drain hose is securely attached to the rear of the unit and directed into a container to capture the collected water. Moreover, for proper functionality, the ambient temperature must be maintained above 1 °C. Should the displayed temperature fall below the threshold, the dehumidifier function will not activate to prevent the compressor from entering defrost mode excessively, preserving its optimal performance.

**Question - Do Avalla Air Conditioners have a sleep mode?**

**Answer -** The S-50, S-80, S-150, S-220, S-360, S-550, and S-770 units are all equipped with a sleep mode feature, specifically designed to reduce sound output during nighttime operation, providing you with a more restful and peaceful sleep experience.

**Question - Why does the air come out sideways?**

**Answer -** Our air conditioners have been thoughtfully engineered to optimize the airflow within the room. As a deliberate design feature, the direction of the air is intentionally not facing straight forward. This strategic design enhances the unit's efficiency by effectively circulating cool air throughout the room, resulting in a faster and more efficient cooling of the entire area.

**Question - Why is my air conditioner leaking?**

**Answer -** As the unit collects water during its operation, it is typically expelled through the exhaust hose in small quantities. However, during the warmer months with increased humidity, the air conditioner needs to extract more moisture from the air. Since the air conditioner is not in dehumidifier mode, the water tank may not register as full, leading to potential overflow and leakage.

In such instances, we highly recommend utilizing the continuous drainage hose in conjunction with a small bucket to facilitate a continuous flow of water and prevent any future leaks.

**Question - Is the exhaust hose compulsory?**

**Answer -** All our air conditioners are shipped with a complete each window kit, comprising an exhaust hose, drainage hose, remote, connectors, and the necessary components for installation. It is important to note that we do not offer any alternative kits, and using the provided kit is mandatory while the unit is in operation.



Download Size: 2.8671208



Share & 77 documents of  
Shareware, Free, Software  
Shareware, Free, Software



support@avalla.com

[\[pdf\]](#) Frequently Asked Questions

Jon King Air Conditioner FAQs Answer The S 50 80 150 220 360 550 and 770 units are all equipped with a sleep mode feature specifically designed to reduce sound output 71 Lo4ebBoL m media amazon images I |||

Air Conditioner FAQs Question - Why does the dehumidifier not work on my Air-Conditioner Answer - ... 0, S-150, S-220, S-290, S-550, and S-770 are equipped with a child lock feature. However, the S-50, **S-95**, S-200, and S-360 models do not have this feature. ...

lang:en score:12 filesize: 182.09 K page\_count: 2 document date: 2023-09-28