

Wiltec 62869

Wiltec Galvanized Storage Rack Model 62869 User Manual

INTRODUCTION

This manual provides detailed instructions for the assembly, safe operation, and maintenance of your Wiltec Galvanized Storage Rack, Model 62869. This storage rack is designed to help organize basements, warehouses, garages, or workshops efficiently. It measures 100 x 60 x 200 cm (Length x Width x Height) and features five shelves. The shelves are constructed from MDF wood fiberboards, each capable of supporting a load of up to 200 kg. The galvanized metal frame ensures stability and durability. The intuitive snap-in system simplifies assembly, eliminating the need for additional tools.

SAFETY WARNINGS

- **Weight Capacity:** Do not exceed a weight of 200 kg per shelf. The total maximum weight capacity for the entire unit is 1000 kg.
- **Assembly:** Always assemble the rack strictly according to the instructions provided in this manual to ensure safe use and stability.
- **Placement:** Keep the storage rack away from direct heat sources and sharp objects to prevent damage to the shelves and frame.
- **Stability:** Ensure the rack is placed on a level, stable surface. For added safety, consider anchoring the rack to a wall, especially in areas prone to seismic activity or heavy loads.
- **Children:** Keep children away from the rack during assembly and ensure it is stable before allowing access to the area. Do not allow children to climb on the rack.

COMPONENTS LIST

Before beginning assembly, verify that all components are present and undamaged. The package should contain the following parts:

- Galvanized metal uprights (vertical support beams)
- Galvanized metal long crossbeams (horizontal supports for shelf length)
- Galvanized metal short crossbeams (horizontal supports for shelf width)

- MDF wood fiber shelf boards (5 pieces)
- Plastic feet/caps (for the bottom of the uprights)

Refer to the image below for a visual representation of the assembled rack and its dimensions.

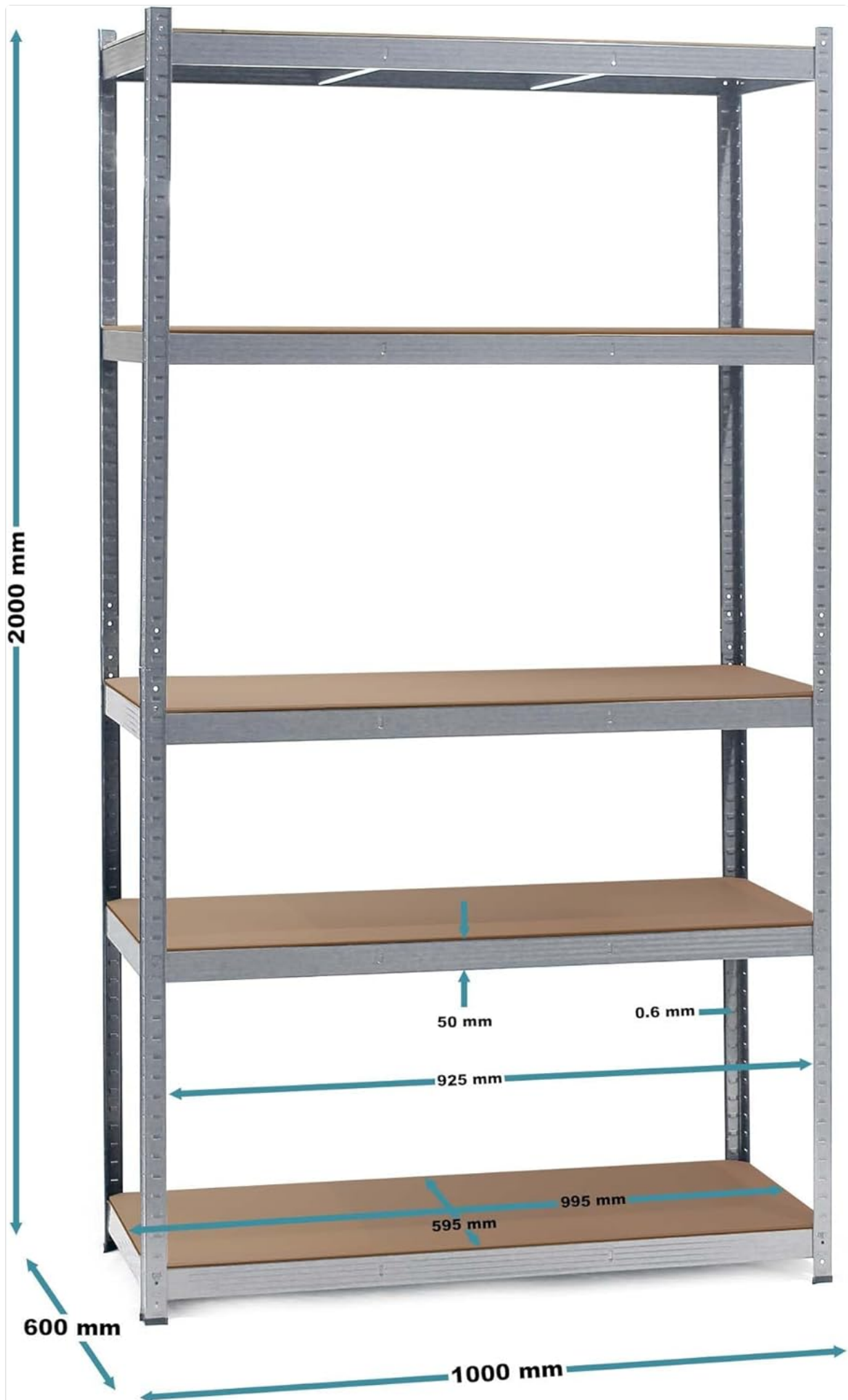


Image: Assembled Wiltec storage rack with key dimensions and shelf details. This image illustrates the overall structure

SETUP AND ASSEMBLY INSTRUCTIONS

The Wiltec storage rack features an intuitive snap-in system, requiring no special tools for assembly. Follow these steps carefully:

1. **Unpack and Inspect:** Carefully unpack all components. Lay them out and compare them against the components list to ensure everything is present and undamaged.
2. **Assemble Uprights:** If the uprights are supplied in two halves, connect them by sliding the interlocking sections together. Ensure they are securely joined.
3. **Attach Crossbeams (Lower Section):** Begin by assembling the lowest shelf level. Take two long crossbeams and two short crossbeams. Connect them to the uprights by inserting the tabs on the crossbeams into the designated slots on the uprights. Gently tap with a rubber mallet (not included) if needed to ensure a snug fit. Ensure the frame forms a stable rectangle.
4. **Insert First Shelf Board:** Once the lower frame is secure, place one MDF shelf board onto the assembled crossbeams. Ensure it sits flush within the frame.
5. **Continue with Middle Sections:** Repeat step 3 and 4 for the remaining three shelf levels, working your way upwards. Decide on your desired shelf heights before attaching the crossbeams, as the snap-in system allows for adjustable spacing.
6. **Attach Crossbeams (Top Section):** Assemble the top shelf level in the same manner as the lower sections.
7. **Insert Final Shelf Board:** Place the last MDF shelf board onto the top assembled crossbeams.
8. **Install Plastic Feet:** Place the plastic feet/caps onto the bottom ends of the uprights. This protects your floor and provides additional stability.

The image below shows a close-up of how the shelf frame components connect, illustrating the snap-in mechanism.



Image: Detail of the galvanized metal frame and MDF shelf connection, highlighting the snap-in assembly.

Once assembled, ensure all connections are tight and the rack is stable before loading any items.

OPERATING INSTRUCTIONS

Using your Wiltec storage rack correctly ensures its longevity and safety:

- **Load Distribution:** Distribute weight evenly across each shelf. Avoid concentrating heavy items in one small area.
- **Weight Limits:** Adhere strictly to the maximum weight capacity of 200 kg per shelf and 1000 kg total for the entire unit. Overloading can lead to structural failure and injury.
- **Placement of Heavy Items:** Place heavier items on lower shelves to improve the rack's overall stability and reduce the risk of tipping.
- **Clearance:** Ensure adequate clearance around the rack for safe loading and unloading of items.
- **Stability Check:** Periodically check the rack for stability, especially after moving it or significantly

changing its load.

MAINTENANCE

Regular maintenance will help preserve the condition and functionality of your storage rack:

- **Cleaning:** Wipe down the galvanized metal frame with a damp cloth to remove dust and dirt. For the MDF shelves, use a dry or slightly damp cloth. Avoid excessive moisture to prevent damage to the MDF.
- **Inspection:** Periodically inspect all connections to ensure they remain secure. Check the MDF shelves for any signs of damage, warping, or excessive wear.
- **Corrosion:** While the frame is galvanized, prolonged exposure to moisture can still lead to corrosion. Ensure the rack is used in a dry environment. If rust spots appear, clean them and apply a rust-inhibiting treatment.
- **Damage:** If any part of the rack becomes damaged, especially structural components, discontinue use immediately and replace the affected parts or the entire unit.

TROUBLESHOOTING

Here are solutions to common issues you might encounter:

- **Rack is Unstable/Wobbly:**
 - Ensure all crossbeams are fully seated into the upright slots.
 - Verify the rack is on a level surface. Use shims if necessary to level it.
 - Check that the plastic feet are properly installed.
 - Ensure weight is evenly distributed and not exceeding capacity.
- **Shelf Boards Don't Fit:**
 - Double-check that the long and short crossbeams are correctly oriented and form a perfect rectangle.
 - Ensure the frame is not twisted or misaligned.
- **Difficulty Assembling Connections:**
 - Ensure the tabs on the crossbeams are correctly aligned with the slots on the uprights.
 - A rubber mallet can be used to gently tap connections into place, but avoid excessive force.

PRODUCT SPECIFICATIONS

Feature	Specification
Brand	Wiltec
Model Number	62869
Color	Galvanized
Product Dimensions (L x W x H)	100 x 60 x 200 cm (approx. 100D x 60B x 204H cm including feet)
Product Weight	20.64 kg
Maximum Weight Capacity (per shelf)	200 kg
Maximum Weight Capacity (total)	1000 kg
Frame Material	Galvanized Metal
Shelf Material	MDF Wood Fiberboard
Number of Shelves	5
Assembly Type	Snap-in System (tool-free)
Mounting Type	Floor Mounting
Special Features	Space-saving, Adjustable shelf height

An image of the fully assembled rack is provided below for reference.

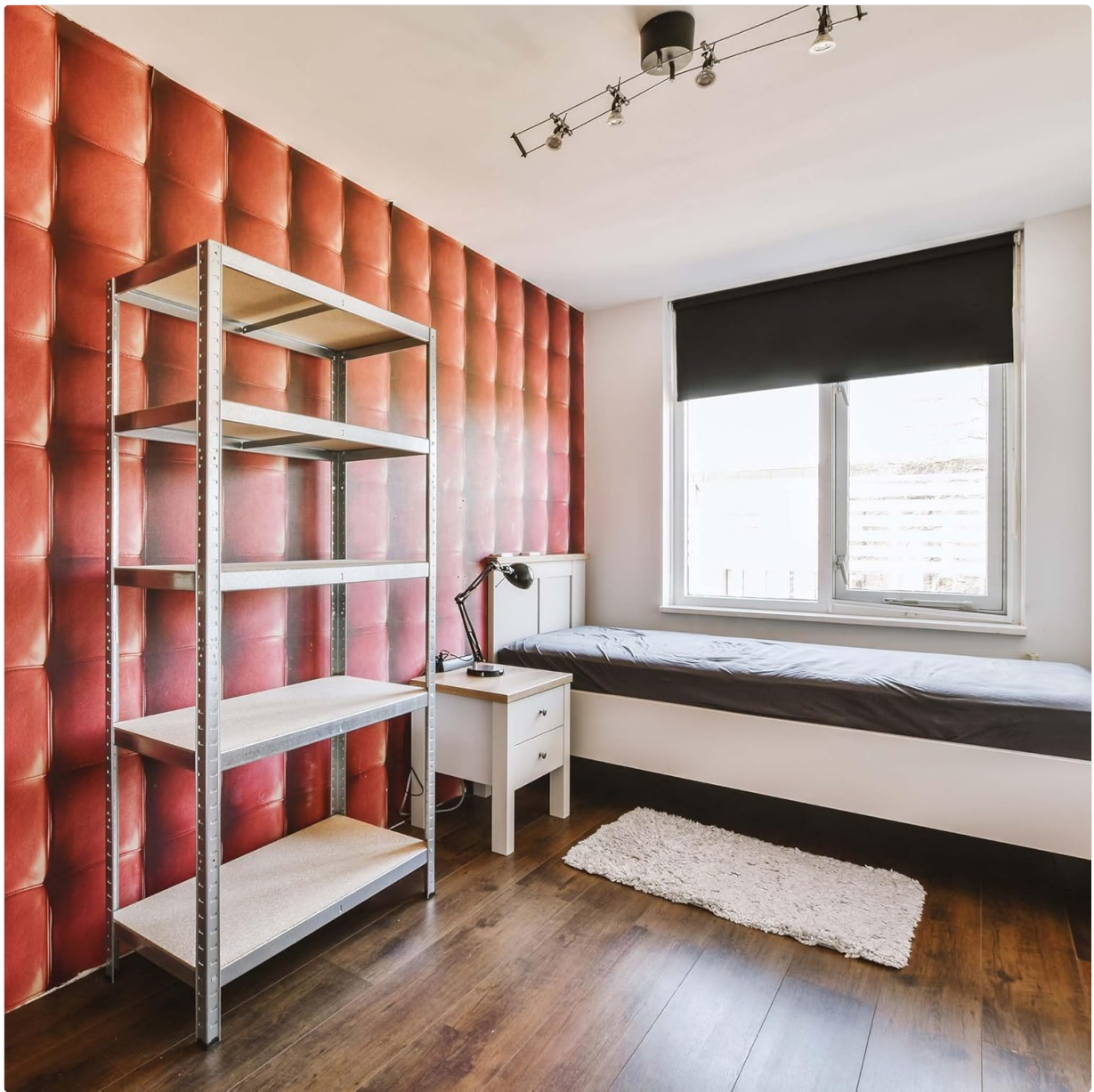


Image: Fully assembled Wiltec galvanized storage rack, showcasing its complete structure.

WARRANTY INFORMATION

Specific warranty details for the Wiltec Galvanized Storage Rack Model 62869 may vary by region and retailer. Please refer to your purchase documentation or contact the retailer where you purchased the product for precise warranty terms and conditions. Generally, products are covered against manufacturing defects for a limited period from the date of purchase.

CUSTOMER SUPPORT

For further assistance, technical support, or inquiries regarding replacement parts, please contact Wiltec customer service or the retailer from whom you purchased this product. Have your model number (62869) and purchase date ready when contacting support.

Wiltec Wildanger Technik GmbH

(Contact information typically found on product packaging or the manufacturer's official website)

