

Gevi B09M2QY2X3

Gevi Electric Griddle and Grill User Manual

Model: B09M2QY2X3

1. IMPORTANT SAFETY INSTRUCTIONS

When using electrical appliances, basic safety precautions should always be followed to reduce the risk of fire, electric shock, and/or injury to persons, including the following:

- Read all instructions before operating the appliance.
- Do not touch hot surfaces. Use handles or knobs.
- To protect against electrical shock, do not immerse cord, plugs, or the appliance body in water or other liquid.
- Close supervision is necessary when any appliance is used by or near children.
- Unplug from outlet when not in use and before cleaning. Allow to cool before putting on or taking off parts, and before cleaning the appliance.
- Do not operate any appliance with a damaged cord or plug, or after the appliance malfunctions or has been damaged in any manner. Contact customer service for examination, repair, or adjustment.
- The use of accessory attachments not recommended by the appliance manufacturer may cause injuries.
- Do not use outdoors.
- Do not let cord hang over edge of table or counter, or touch hot surfaces.
- Do not place on or near a hot gas or electric burner, or in a heated oven.
- Extreme caution must be used when moving an appliance containing hot oil or other hot liquids.
- Always attach plug to appliance first, then plug cord into the wall outlet. To disconnect, turn any control to 'off', then remove plug from wall outlet.
- Do not use appliance for other than intended use.

2. PRODUCT OVERVIEW

The Gevi Electric Griddle and Grill is a versatile kitchen appliance designed for various cooking tasks. It

features two nonstick plates and precise temperature control, allowing for grilling, griddling, and panini pressing. The appliance can be used in a closed contact grill position or fully opened for a larger cooking surface.



Image: Gevi Electric Griddle and Grill in its closed configuration, ready for use as a contact grill or panini press.

MULTI-FUNCTION IN 1



Image: The Gevi Electric Griddle and Grill shown in closed, partially open, and fully open (griddle/grill) configurations, demonstrating its multi-functionality. The bottom image shows two steaks on a grill plate and vegetable skewers on a flat griddle plate.

3. COMPONENTS

- Main Unit with Control Panel
- Upper Grill Plate (Removable, Nonstick)
- Lower Grill Plate (Removable, Nonstick)
- Drip Tray
- Power Cord



Image: A close-up view of the removable drip tray, designed to collect excess grease and liquids during cooking.

4. SETUP

1. **Unpack:** Carefully remove all packaging materials and promotional labels from the appliance.
2. **Clean Plates:** Before first use, wipe the grill plates with a damp cloth or sponge. Dry thoroughly.
3. **Install Drip Tray:** Ensure the drip tray is correctly inserted into its designated slot at the front of the appliance.
4. **Position:** Place the appliance on a flat, stable, heat-resistant surface, away from walls or other heat-sensitive objects. Ensure adequate ventilation.
5. **Power Connection:** Plug the power cord into a grounded electrical outlet.

5. OPERATING INSTRUCTIONS

5.1 Basic Operation

1. **Power On:** Press the 'ON/OFF' button to turn on the appliance.



Image: A hand pressing the power button to activate the appliance.

2. **Select Menu:** Use the control dial to navigate through the available cooking presets (e.g., Chicken, Sausage, Red Meat, Fish, Panini, Burger).

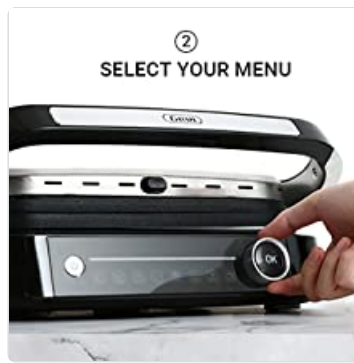


Image: A hand rotating the control dial to select a specific cooking program.

3. **Confirm Selection:** Press the 'OK' button to confirm your chosen cooking preset. The appliance will begin pre-heating.



Image: A hand pressing the 'OK' button to start the pre-heating process for the selected cooking mode.

4. **Add Food:** Once pre-heating is complete (indicated by a signal or light), carefully place your food onto the lower grill plate. Close the lid.

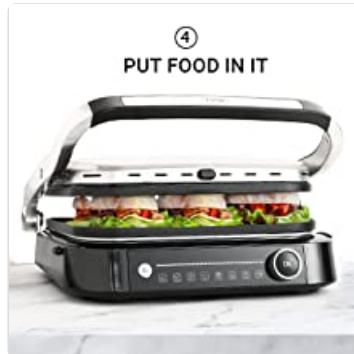


Image: The grill plates are open, ready for food to be placed inside for cooking.

5. **Cooking Progress:** The appliance will automatically adjust cooking time and temperature based on the selected preset and the food's thickness. Monitor the cooking progress indicators.
6. **Remove Food:** Once cooking is complete, carefully open the lid and remove the food using heat-resistant utensils.
7. **Power Off:** Press the 'ON/OFF' button to turn off the appliance and unplug it from the outlet.

5.2 Special Features

- **Automatic Thickness Measurement:** The grill automatically detects the thickness of your food and adjusts cooking parameters for optimal results.

AUTOMATIC THICKNESS MEASUREMENT

Patented Technology Lets You Realize a Simple Cooking

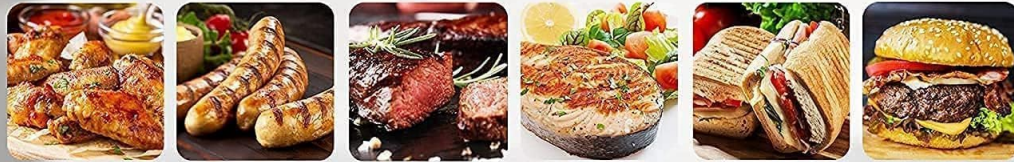


Image: The grill demonstrating its automatic thickness measurement capability, adjusting to accommodate food items between 10-50mm.

- **6 Cooking Presets:** Dedicated settings for Chicken, Sausage, Red Meat, Fish, Panini, and Burger simplify cooking.

6 COOKING PRESETS

Chicken/ Sausage/ Red Meat/ Fish/ Burger/ Panini



CHICKEN

SAUSAGE

RED MEAT

FISH

PANINI

BURGER

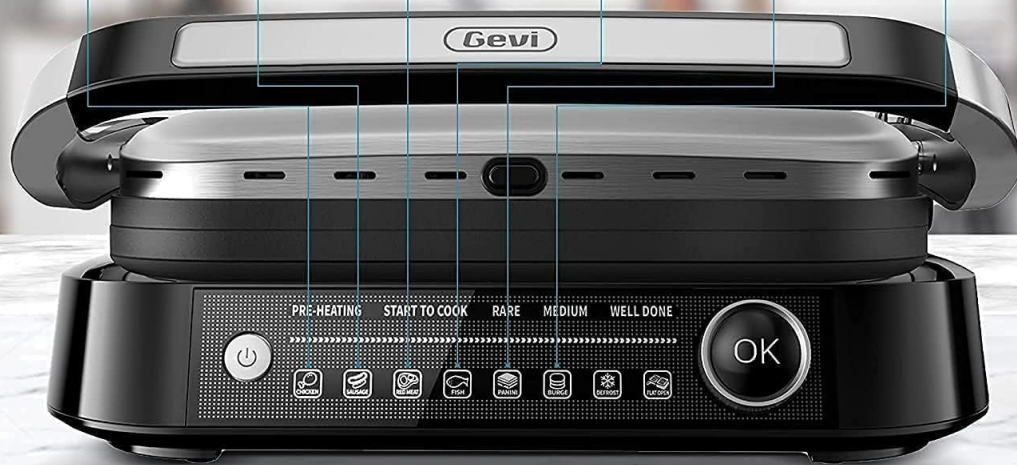


Image: The control panel displaying the six distinct cooking presets for various food types.



STEAK



FISH



CHICKEN



PANINI



BURGER



SAUSAGE

Image: A collage of images showing steak, fish, chicken, panini, burger, and sausage, representing the food types

compatible with the grill's presets.

- **Steak Doneness Chart:** Visual indicators on the control panel guide you to achieve desired steak doneness from rare to well-done.



PRE-HEATING START TO COOK RARE MEDIUM **WELL DONE**



Image: A cooked steak being lifted from the grill, illustrating different levels of doneness.



Gevi 6-in-1 ELECTRIC GRIDDLE

Make Indoor Grill Smart & Enjoyable Than Ever



Image: A visual guide displaying various steak doneness levels from rare to well-done, alongside grill settings (Low, Med, High, Max).

- **Flat Open Mode:** The grill can open 180 degrees to provide a larger, flat cooking surface for griddling or simultaneous grilling of different items.

6. MAINTENANCE AND CLEANING

Regular cleaning ensures optimal performance and extends the life of your appliance.

1. **Unplug and Cool:** Always unplug the appliance and allow it to cool completely before cleaning.
2. **Remove Drip Tray:** Empty and wash the drip tray with warm, soapy water. Rinse and dry thoroughly.
3. **Remove Grill Plates:** The nonstick grill plates are removable for easy cleaning. Press the release buttons to detach them.
4. **Clean Grill Plates:** The removable nonstick plates are dishwasher safe. Alternatively, wash them by hand with warm, soapy water and a non-abrasive sponge. Rinse and dry thoroughly.



DISHWASHER SAFE NONSTICK PLATES

Removable Nonstick Plates

Image: A removable nonstick grill plate being placed into a dishwasher, highlighting its dishwasher-safe design for convenient cleaning.

5. **Clean Exterior:** Wipe the exterior of the appliance with a damp cloth. Do not use abrasive cleaners or scourers.

6. **Storage:** Ensure all parts are clean and dry before storing the appliance in a cool, dry place.

7. TROUBLESHOOTING

If you encounter issues with your Gevi Electric Griddle and Grill, refer to the following common problems and solutions:

- **Appliance does not turn on:**
 - Ensure the power cord is securely plugged into a working electrical outlet.
 - Check if the 'ON/OFF' button has been pressed.
- **Food is not cooking evenly:**
 - Ensure food is evenly distributed on the plates.
 - Verify that the selected cooking preset is appropriate for the food type and thickness.
 - Allow the appliance to fully pre-heat before adding food.
- **Plates are difficult to remove:**
 - Ensure the appliance is completely cool before attempting to remove plates.
 - Press the plate release buttons firmly.
- **Excessive smoke:**
 - Ensure plates are clean and free of old food residue or excessive oil.
 - Empty the drip tray if it is full.

For issues not covered here, please contact Gevi customer support.

8. SPECIFICATIONS

Feature	Detail
Brand	Gevi
Model Number	B09M2QY2X3
Special Feature	Non Stick Coating, Temperature Control
Material	Stainless Steel
Product Dimensions	19.88"D x 12.32"W x 3.07"H (50.5cm D x 31.3cm W x 7.8cm H)
Wattage	1500 watts
Item Weight	12.27 pounds

Number of Settings

6 (Cooking Presets)



Image: A diagram illustrating the dimensions of the Gevi Electric Griddle and Grill.




9. WARRANTY AND SUPPORT




Gevi products are manufactured to high-quality standards. For warranty information, product support, or service inquiries, please refer to the warranty card included with your purchase or visit the official Gevi website. Please retain your proof of purchase for warranty claims.

For further assistance, you may contact Gevi customer service through their official channels.

© 2023 Gevi. All rights reserved.

Related Documents - B09M2QY2X3

	<p>Gevi 2-in-1 Smart Espresso Coffee Machine Instruction Booklet</p> <p>Comprehensive instruction booklet for the Gevi 2-in-1 Smart Espresso Coffee Machine (Model GECME403L-U). Learn about operation, maintenance, troubleshooting, and enjoy perfect espresso and milk frothing.</p>
	<p>Gevi GECME020DE-U 3-in-1 Smart Coffee Machine: Operation and Maintenance Guide</p> <p>Comprehensive guide to operating and maintaining your Gevi GECME020DE-U 3-in-1 smart coffee machine, covering grinder, brewer, and milk frothing functions. Learn cleaning tips, troubleshooting, and best practices for optimal performance.</p>
	<p>Gevi 2-in-1 Smart Espresso Coffee Machine - Instruction Booklet</p> <p>Comprehensive instruction booklet for the Gevi 2-in-1 Smart Espresso Coffee Machine (Model GECME400BA-U), covering setup, operation, cleaning, maintenance, and troubleshooting.</p>

	<p>Gevi GECME400BA-U Coffee Maker Instruction Manual</p> <p>Comprehensive instruction manual for the Gevi GECME400BA-U coffee maker, covering setup, operation, cleaning, maintenance, and troubleshooting.</p>
	<p>Gevi GECME022-U Coffee Maker Instruction Manual</p> <p>Comprehensive instruction manual for the Gevi GECME022-U coffee maker, covering important safeguards, operation guides for frothing milk and making espresso, cleaning, maintenance, troubleshooting, and product disposal.</p>
	<p>Gevi Coffee Maker GECME003D-U Instruction Manual</p> <p>Comprehensive instruction manual for the Gevi Coffee Maker GECME003D-U, covering setup, operation, frothing milk, making espresso, cleaning, maintenance, and troubleshooting.</p>