

## Tenda BE5010

# Tenda BE5010 WiFi 7 Access Point User Manual

MODEL: BE5010 (i36)

Brand: Tenda

## Introduction

This user manual provides comprehensive instructions for the installation, configuration, operation, and maintenance of your Tenda BE5010 WiFi 7 Access Point. Please read this manual carefully before using the device to ensure proper setup and optimal performance. Keep this manual for future reference.

## Product Overview

The Tenda BE5010 is a high-performance WiFi 7 Access Point designed for demanding network environments. It incorporates the latest Wi-Fi 7 (802.11be) technology to deliver ultra-fast, stable, and efficient wireless connectivity.

### Key Features

- **Latest Wi-Fi 7 Technology:** Utilizes MLO, 4K QAM, Multi-RU, and Preamble Puncturing for enhanced network performance and reduced congestion.
- **Dual-Band BE5010 Speed:** Offers up to 688Mbps on the 2.4GHz band and 4323Mbps on the 5GHz band, totaling 5010Mbps.
- **2.5G Ethernet Port:** Features one 2.5G PoE+ port and one Gigabit Ethernet port for high-speed wired connections and flexible power options.
- **Extended Coverage:** Equipped with 5 high-power signal amplifiers (FEM) and 5 integrated 4dBi high-gain antennas, providing a coverage area of up to 180 square meters.
- **Seamless Roaming:** Supports 802.11k/v/r fast roaming protocols for uninterrupted connectivity as users move between access points.
- **Flexible Management:** Manage your device via the Tenda CloudFi App, CloudFi platform, or local web interface.
- **Advanced Security:** Supports WPA3 security protocol and multiple SSIDs for secure and segmented network access.

### Package Contents

- Tenda BE5010 (i36) Access Point
- Power Adapter
- PoE Injector
- Mounting Screw Kit
- Mounting Bracket
- User Guide

## Contenuto del Pacchetto



Image: Contents of the Tenda BE5010 package, including the access point, power adapter, PoE injector, mounting kit, and user guide.

## Setup

### Physical Installation

The Tenda BE5010 supports both ceiling and wall mounting, offering flexibility for various office or home environments. Choose a central location for optimal Wi-Fi coverage.

1. **Ceiling Mount:** Use the provided mounting bracket and screws to secure the access point to the ceiling. Ensure the location allows for proper cable routing.
2. **Wall Mount:** Attach the mounting bracket to a wall using the screws, then secure the access point to the bracket.



Image: Illustration showing the Tenda BE5010 installed on a ceiling and a wall, demonstrating flexible mounting options.

### Powering the Device

The BE5010 can be powered using either Power over Ethernet (PoE+) or the included power adapter.

1. **PoE+ (Recommended):** Connect an Ethernet cable from a PoE+ switch (802.3at compliant) or the included PoE injector to the 2.5G PoE+ port on the access point. This provides both power and data through a single cable.
2. **Power Adapter:** If PoE+ is not available, connect the included power adapter to the power input port on the access point and plug it into a standard electrical outlet.

# PoE+ Standard per un'Implementazione Facile e Flessibile

L'i36 supporta 802.3at PoE+ e può essere alimentato da uno switch PoE+ o un iniettore PoE+. Un singolo cavo Ethernet fornisce sia alimentazione che dati, permettendo implementazioni flessibili montate a soffitto.



Image: Diagram illustrating PoE+ connectivity, showing the Tenda BE5010 connected to a PoE+ switch via a single Ethernet cable for both power and data.

## Operating

### Initial Configuration

After powering on, the access point will broadcast a default Wi-Fi network. Connect your computer or mobile device to this network to begin configuration.

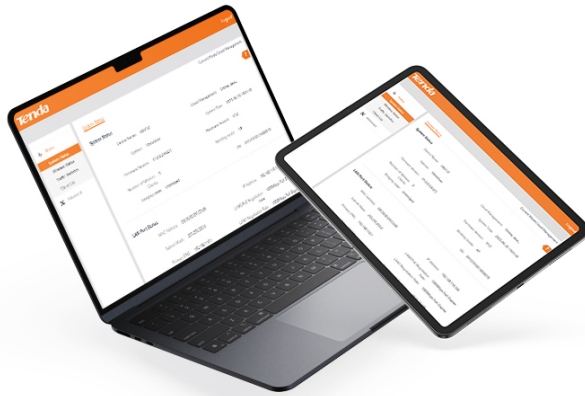
### Management Options

The Tenda BE5010 offers flexible management options to suit your needs:

- **Local Web Interface:** Access the device's web interface by typing its IP address (or tendawifi.com) into a web browser while connected to its network. This provides detailed control over all network parameters.
- **CloudFi Platform:** For professional cloud control, use the Tenda CloudFi platform. This allows you to monitor, manage, and configure multiple devices remotely from a single dashboard.
- **CloudFi App:** Manage your access points anytime, anywhere using the CloudFi mobile app. It offers real-time network monitoring, device status control, and wireless optimization from your smartphone.



Image: Visual representation of the Tenda BE5010 management options, including local web interface, CloudFi platform, and CloudFi mobile app.



## Controllo Professionale in Cloud tramite Dashboard Web

La piattaforma CloudFi di Tenda ti consente di visualizzare l'intera rete AP tramite una vista dinamica della topologia. Implementa, configura, riavvia o diagnostica facilmente più dispositivi da un singolo dashboard.

Image: Screenshot of the Tenda CloudFi web dashboard, demonstrating professional cloud control capabilities.

## Gestione Locale

Collega il tuo dispositivo Wi-Fi a uno degli SSID del tuo AP wireless, quindi inserisci <http://tendawifi.com> nella barra degli indirizzi di un browser web per accedere all'interfaccia web locale. Ideale per i clienti che non necessitano della gestione in cloud.

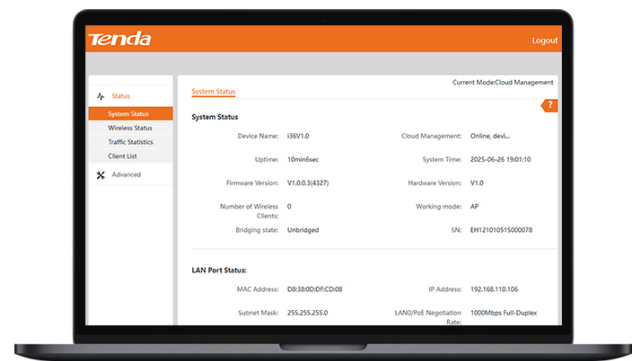


Image: Screenshot of the Tenda BE5010 local web management interface, showing system status and configuration options.



## Gestisci gli AP in Qualsiasi Momento e Ovunque con l'App CloudFi

Rimani in controllo ovunque tu vada. L'App CloudFi offre monitoraggio in tempo reale della rete, controllo dello stato dei dispositivi e ottimizzazione wireless, tutto dal tuo smartphone.



Image: A hand holding a smartphone displaying the Tenda CloudFi app interface, illustrating mobile management capabilities.

## Seamless Roaming

The BE5010 supports 802.11k/v/r fast roaming protocols, ensuring that your wireless devices automatically connect to the access point with the strongest signal as you move. This provides a smooth and uninterrupted Wi-Fi experience with zero connection loss.

## Roaming Rapido senza Interruzioni con Zero Perdite di Connessione

Li36 supporta i protocolli di roaming 802.11k/v/r, consentendo ai dispositivi di connettersi automaticamente al punto di accesso con il segnale più forte mentre ti sposti tra stanze o piani.

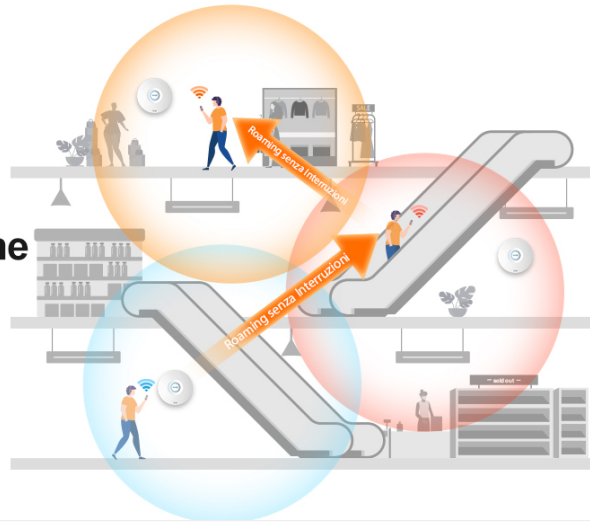


Image: An illustration depicting seamless roaming in a multi-floor environment, showing devices automatically switching between access points for continuous connectivity.

## Maintenance

Regular maintenance ensures the longevity and optimal performance of your Tenda BE5010 Access Point.

- **Firmware Updates:** Periodically check for and install the latest firmware updates from the Tenda official website or through the CloudFi platform/app. Firmware updates often include performance improvements, new features, and security patches.
- **Cleaning:** Keep the device clean and free from dust. Use a soft, dry cloth to wipe the exterior. Do not use liquid cleaners or aerosols.
- **Environmental Conditions:** Ensure the device is operated within its specified temperature and humidity ranges. Avoid placing it near heat sources or in direct sunlight.
- **Restart:** If you experience minor network issues, try restarting the access point by unplugging its power source for 10 seconds and then plugging it back in.

## Troubleshooting

If you encounter issues with your Tenda BE5010, refer to the following common troubleshooting steps:

Problem	Possible Solution
No Power/LEDs Off	Check power connections. Ensure the power adapter or PoE injector is properly connected and receiving power. Verify the Ethernet cable for PoE+ is functional.
No Wi-Fi Signal	Confirm the device is powered on. Check if Wi-Fi is enabled in the settings via the web interface or app. Ensure the access point is not in a location with excessive interference.
Slow Wi-Fi Speed	Check your internet connection speed. Ensure the access point is connected to a 2.5G or Gigabit port on your router/switch. Reduce interference by adjusting the channel or location. Update firmware.
Cannot Access Web Interface	Ensure your device is connected to the access point's network. Try accessing via the default IP address or "tendawifi.com". Clear browser cache or try a different browser.
Frequent Disconnections	Check for signal interference. Ensure the access point is securely mounted. Update device drivers on your client devices. Verify power stability.

## Specifications

Feature	Detail
Model Name	BE5010 (i36)
Wireless Standard	802.11be (Wi-Fi 7)
Frequency Band	Dual-Band (2.4 GHz & 5 GHz)
Data Rate (2.4GHz)	Up to 688 Mbps
Data Rate (5GHz)	Up to 4323 Mbps
Total Data Rate	Up to 5010 Mbps
Ethernet Ports	1x 2.5G PoE+ Port, 1x Gigabit Port
Power Supply	802.3at PoE+ or DC Power Adapter (included)
Security Protocols	WPA3
Special Features	MLO, 4K QAM, Multi-RU, Preamble Puncturing, Rapid Roaming (802.11k/v/r), Multi-SSID
Coverage Area	Up to 180 square meters
Dimensions (L x W x H)	25.1 cm x 25.1 cm x 6.6 cm
Weight	630 Grams

## Warranty and Support

### Product Warranty

The Tenda BE5010 Access Point comes with a **2-year manufacturer's warranty** from the date of purchase. This warranty covers defects in materials and workmanship under normal use. Please retain your proof of purchase for warranty claims.

### Technical Support

For technical assistance, troubleshooting, or further inquiries, please visit the official Tenda website or contact Tenda customer support. You can find contact information and frequently asked questions (FAQs) on their support page.

**Tenda Official Website:** [www.tendacn.com](http://www.tendacn.com)