

## Manuals+

[Q & A](#) | [Deep Search](#) | [Upload](#)

Manuals.plus /

› [Hconcet](#) /

› Hconcet DW300-7 TO4E55 Turbocharger User Manual

## Hconcet DW300-7 TO4E55

# Hconcet DW300-7 TO4E55 Turbo DE08 Turbocharger User Manual

Model: DW300-7 TO4E55 | Part Numbers: 65.09100-7082, 65.09100-7083, 65.09100-7137, 730505-0001, 730505-0002

## 1. INTRODUCTION

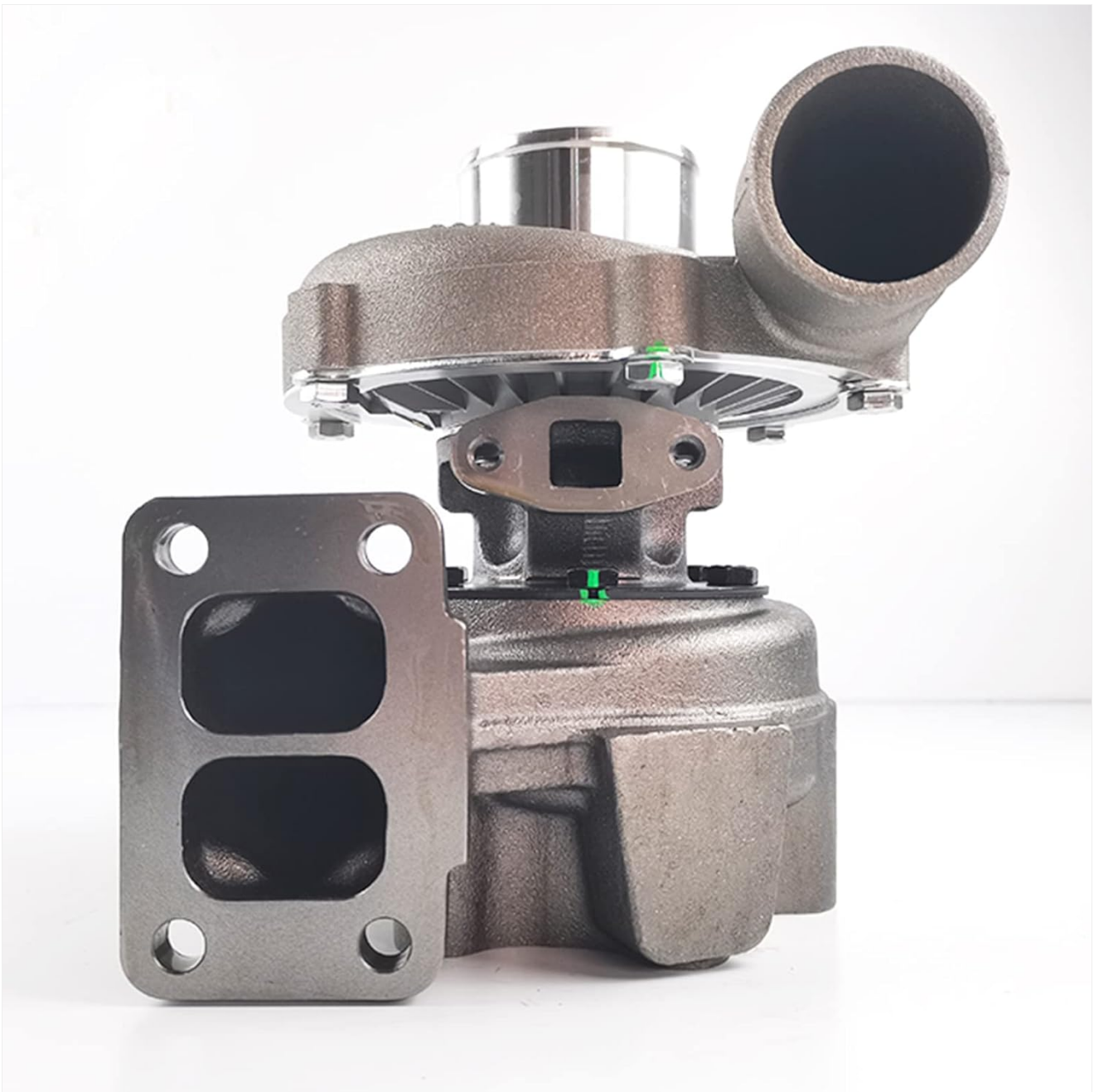
This manual provides essential information for the proper installation, operation, and maintenance of the Hconcet DW300-7 TO4E55 Turbo DE08 Turbocharger. Adherence to these guidelines will help ensure optimal performance and longevity of the unit.

### 1.1 Product Identification

- **Product Name:** Turbo Turbocharger
- **Brand:** Hconcet
- **Turbo Model:** TO4E55, T04E55, DW300-7
- **Part Numbers:** 65.09100-7082, 65.09100-7083, 65.09100-7137, 730505-0001, 730505-0002
- **Compatibility:** Compatible with Daewoo DH300-7, DX300LC, D1146T engines.

## 2. PRODUCT OVERVIEW

The Hconcet DW300-7 TO4E55 Turbocharger is designed to enhance engine performance by increasing the amount of air entering the combustion chamber. Below are visual representations of the turbocharger from various angles.



**Figure 2.1:** Front view of the Hconcet DW300-7 TO4E55 Turbocharger. This image highlights the primary components including the exhaust housing with its rectangular flange and the compressor housing with its circular inlet.



**Figure 2.2:** Side view of the turbocharger. This perspective provides a clear view of the central bearing housing and the various bolt holes for mounting.



**Figure 2.3:** Alternative side view of the turbocharger, showcasing the contours of the compressor and turbine housings and additional mounting points.



**Figure 2.4:** Rear view of the turbocharger, displaying the exhaust outlet flange and the overall compact design of the unit.



**Figure 2.5:** Top-down view into the compressor inlet, revealing the compressor wheel blades. This view is crucial for inspecting the condition of the compressor section.

### 3. SPECIFICATIONS

Attribute	Value
Product Name	Turbo Turbocharger
Part Numbers	65.09100-7082, 65.09100-7083, 65.09100-7137, 730505-0001, 730505-0002
Turbo Model	TO4E55, T04E55, DW300-7
Condition	New
Manufacturer	Hconcet
Brand	Hconcet

Attribute	Value
ASIN	B09LSBPRZL
Date First Available	November 13, 2021

## 4. SETUP AND INSTALLATION

---

Proper installation is critical for the performance and longevity of your turbocharger. It is highly recommended that installation be performed by a qualified and experienced automotive technician.

### 4.1 Pre-Installation Checks

- Verify that the new turbocharger matches the original unit in terms of part numbers and specifications.
- Inspect the new turbocharger for any signs of shipping damage.
- Ensure the engine oil supply and return lines are clean and free of obstructions.
- Check the air intake and exhaust systems for any blockages or leaks.
- Confirm that the engine oil and filter are new and of the correct specification for the vehicle.

### 4.2 Installation Procedure (General Steps)

1. Disconnect the vehicle's battery.
2. Remove the old turbocharger, carefully noting the connections for oil, coolant (if applicable), air intake, and exhaust.
3. Clean all mating surfaces thoroughly to ensure a proper seal.
4. Install new gaskets and seals as required.
5. Mount the new turbocharger, ensuring all bolts are torqued to the manufacturer's specifications.
6. Connect all oil, coolant, air, and exhaust lines. Ensure no kinks or restrictions in oil lines.
7. Before starting the engine, prime the turbocharger with clean engine oil by pouring a small amount into the oil inlet and rotating the compressor wheel by hand.
8. Crank the engine without starting it (e.g., by disconnecting fuel or ignition) to build oil pressure and circulate oil through the turbocharger.
9. Reconnect fuel/ignition and start the engine. Allow it to idle for several minutes to ensure proper oil circulation and check for leaks.

**Note:** Refer to the vehicle's specific service manual for detailed torque specifications and procedures.

## 5. OPERATION GUIDELINES

---

Once installed, the turbocharger operates automatically as part of the engine system. Adhering to general good driving practices will contribute to its longevity.

### 5.1 Normal Operation

- Allow the engine to warm up properly before applying heavy loads or high RPMs. This ensures engine oil reaches optimal operating temperature and viscosity.
- Avoid immediately shutting off the engine after periods of high load or high-speed driving. Allow the engine to idle for a minute or two to allow the turbocharger to cool down and oil to circulate, preventing "coking" of oil in the bearing housing.
- Ensure the engine's air filter is clean to prevent foreign object damage to the compressor wheel.

## 5.2 Post-Installation Checks

- Monitor engine oil levels regularly.
- Listen for any unusual noises (whining, grinding) from the turbocharger area.
- Check for any visible oil leaks around the turbocharger or its connections.
- Observe engine performance for proper boost and power delivery.

## 6. MAINTENANCE

---

Regular maintenance of the engine and its associated systems is crucial for the health of the turbocharger.

### 6.1 Regular Checks

- **Engine Oil:** Change engine oil and filter at recommended intervals using the correct specification oil. Clean oil is paramount for turbocharger bearing lubrication.
- **Air Filter:** Inspect and replace the engine air filter regularly to prevent dirt and debris from entering the compressor.
- **Oil Lines:** Periodically check turbocharger oil supply and drain lines for kinks, blockages, or leaks.
- **Boost Leaks:** Inspect charge air pipes and connections for leaks, which can reduce turbocharger efficiency.

### 6.2 Recommended Practices

- Use high-quality engine oil and filters.
- Address any engine warning lights or performance issues promptly.
- Avoid excessive idling, especially after high-load operation.

## 7. TROUBLESHOOTING

---

This section outlines common issues that may arise with turbochargers and potential causes. Always consult a qualified technician for diagnosis and repair.

### 7.1 Common Issues and Solutions

Symptom	Possible Cause	Action
Loss of Power / No Boost	Boost leak (hoses, intercooler), clogged air filter, faulty wastegate, turbocharger failure.	Check all air hoses and connections. Inspect air filter. Consult technician for wastegate and turbocharger inspection.
Excessive Smoke (Blue/Black)	Blue: Oil burning (turbo seal failure, worn engine). Black: Rich fuel mixture, clogged air filter.	Check turbocharger for oil leaks. Inspect air filter. Consult technician for engine and fuel system diagnosis.
Whining / Grinding Noise	Bearing wear, foreign object damage to compressor/turbine wheels, imbalance.	Immediately cease operation and have the turbocharger inspected by a professional.
Oil Leaks from Turbocharger	Clogged oil drain, worn seals, excessive crankcase pressure.	Check oil drain line for blockages. Inspect PCV system. Consult technician for seal replacement or turbocharger repair.

## 8. IMPORTANT NOTES

---

- Please double check that this product fits your car before purchasing. Verify your part number and compare with product photos.
- Due to variations in display and lighting, the actual color of the product may differ slightly from the images shown.

## 9. WARRANTY AND SUPPORT

---

For specific warranty information regarding your Hconcet turbocharger, please refer to the documentation provided at the time of purchase or contact Hconcet customer support directly. Keep your purchase receipt as proof of purchase.

For technical support or inquiries, please reach out to the seller or manufacturer through the contact information provided with your product or on their official website.