

## Dosmix HM11

# Dosmix Retro Bluetooth Speaker HM11 Instruction Manual

Model: HM11 | Brand: Dosmix

### 1. INTRODUCTION

Thank you for choosing the Dosmix Retro Bluetooth Speaker. This compact and stylish speaker combines vintage aesthetics with modern audio technology, providing a rich sound experience. This manual will guide you through the setup, operation, and maintenance of your new speaker.

#### What's in the Box:

- 1\*Dosmix HM11 Retro Speaker
- 1\* micro USB charging cable
- 1\*user manual
- 1\*Aux line

### 2. PRODUCT OVERVIEW AND FEATURES

The Dosmix HM11 speaker is designed for portability and ease of use, featuring a classic retro look with modern functionalities.

#### Key Features:

- **Portable & Mini Retro Design:** Compact size (2.8\*4.3\*2 inches) for easy portability. Ideal for various settings including kitchen, desk, bedroom, office, party, or outdoor activities.
- **Bluetooth 5.0 Technology & Crystal Clear Sound:** Advanced Bluetooth 5.0 ensures stable connection up to 32.8ft. Delivers clear, stereo sound for an immersive audio experience.
- **Long Playtime & Fast Recharge:** Up to 6 hours of playtime on a single charge (varies by volume). Recharges in 2-3 hours via Micro USB.
- **Vintage Aesthetic:** Blends modern technology with retro classic design, evoking the golden age of music.
- **Multi-functional Connectivity:** Supports Bluetooth, Auxiliary, USB, and TF card playback.

#### Component Identification:



*Figure 2.1: Front view of the Dosmix Retro Bluetooth Speaker. Features a classic radio dial design and control buttons.*

# 「PRODUCT FEATURE DETAILS」

— PRODUCT NAME: HM11 —



Figure 2.2: Rear view of the speaker, highlighting the DC 5V charging port, TF card slot, USB port, MIC, and AUX input.

## Adjustable Volume Design

*you can adjust the volume according to you needs*



Figure 2.3: Adjustable volume design, showing the main dial for volume control.

### 3. SETUP

#### 3.1 Charging the Speaker

1. Connect the provided micro USB charging cable to the **DC 5V** port on the back of the speaker (refer to Figure 2.2).
2. Connect the other end of the USB cable to a compatible USB power adapter (not included) or a computer's USB port.
3. The charging indicator light will illuminate. The speaker typically takes 2-3 hours to fully charge.
4. Once fully charged, the indicator light may change or turn off, depending on the model. Disconnect the charging cable.

#### 3.2 Bluetooth Pairing



1. Ensure the speaker is charged. Press and hold the power button (usually the middle button on the front panel) to turn on the speaker. You will hear an audible prompt indicating "Bluetooth mode".
2. The blue indicator light on the speaker will start blinking, indicating it is in pairing mode and ready to connect.
3. On your mobile device (smartphone, tablet, laptop), go to the Bluetooth settings.
4. Search for available devices. You should see "HM11" or "Dosmix HM11" in the list.
5. Select "HM11" to connect. Once successfully paired, you will hear a confirmation tone or voice prompt, and the blue indicator light will become solid.
6. Your device is now connected, and you can start playing audio through the speaker.

## Compatible with all bluetooth devices

Compatible with Android, IOS, MacOS, WatchOS and Windows



Figure 3.1: The speaker is compatible with a wide range of Bluetooth-enabled devices.

## 4. OPERATING INSTRUCTIONS

### 4.1 Basic Controls

- **Power On/Off:** Press and hold the middle button (labeled with a power icon) to turn the speaker on or off.

- **Play/Pause:** Short press the middle button to play or pause the current track.
- **Volume Control:** Rotate the large dial on the right side of the speaker clockwise to increase volume and counter-clockwise to decrease volume.
- **Previous Track:** Short press the left button (labeled with a rewind icon) to go to the previous track.
- **Next Track:** Short press the right button (labeled with a fast-forward icon) to go to the next track.

## 4.2 Mode Switching

The speaker supports multiple playback modes:

- **Bluetooth Mode:** Default mode upon power-on. Connect wirelessly to your device.
- **AUX Mode:** Insert the provided 3.5mm AUX cable into the AUX port on the back of the speaker and connect to your audio source. The speaker will automatically switch to AUX mode.
- **TF Card Mode:** Insert a TF (Micro SD) card with audio files into the TF card slot on the back. The speaker will automatically switch to TF card playback.
- **USB Mode:** Insert a USB flash drive with audio files into the USB port on the back. The speaker will automatically switch to USB playback.

## 5. MAINTENANCE

- **Cleaning:** Use a soft, dry cloth to clean the speaker's surface. Do not use abrasive cleaners, alcohol, or chemical solvents.
- **Storage:** Store the speaker in a cool, dry place away from direct sunlight and extreme temperatures.
- **Water Resistance:** This speaker is **NOT waterproof**. Avoid exposure to water, rain, or excessive moisture to prevent damage.
- **Battery Care:** To prolong battery life, avoid fully discharging the speaker frequently. Charge it regularly, even if not in use for extended periods.

## 6. TROUBLESHOOTING

- **No Power:**
  - Ensure the speaker is fully charged.
  - Check the charging cable and adapter for damage.
- **Cannot Pair with Bluetooth Device:**
  - Ensure the speaker is in Bluetooth pairing mode (blinking blue light).
  - Make sure Bluetooth is enabled on your device.
  - Move the speaker closer to your device (within 32.8 feet).
  - Forget "HM11" from your device's Bluetooth list and try pairing again.
  - Restart both the speaker and your device.
- **No Sound:**
  - Increase the volume on both the speaker and your connected device.
  - Ensure the speaker is correctly paired via Bluetooth or connected via AUX/USB/TF card.
  - If using AUX, ensure the cable is fully inserted and not damaged.
- **Poor Sound Quality:**

- Move the speaker closer to your Bluetooth device to avoid interference.
- Try playing a different audio file or source.
- Ensure the speaker is not obstructed.

## 7. SPECIFICATIONS

Model Name	HM11
Brand	Dosmix
Color	Green
Product Dimensions	4"D x 2"W x 2"H
Item Weight	6.9 Ounces
Material	Plastic
Speaker Maximum Output Power	5 Watts
Connectivity Technology	Bluetooth, Auxiliary, USB, TF card
Wireless Communication Technology	Bluetooth
Bluetooth Range	32.8 Feet
Battery Life	Up to 6 hours (varies by volume)
Charging Time	2-3 Hours
Is Waterproof	False

## 8. WARRANTY AND SUPPORT

### 8.1 Warranty Information






The Dosmix Retro Bluetooth Speaker (Model HM11) comes with a **1-YEAR** warranty from the date of purchase. This warranty covers manufacturing defects and malfunctions under normal use. It does not cover damage caused by misuse, accidents, unauthorized modifications, or natural disasters.

### 8.2 Customer Support

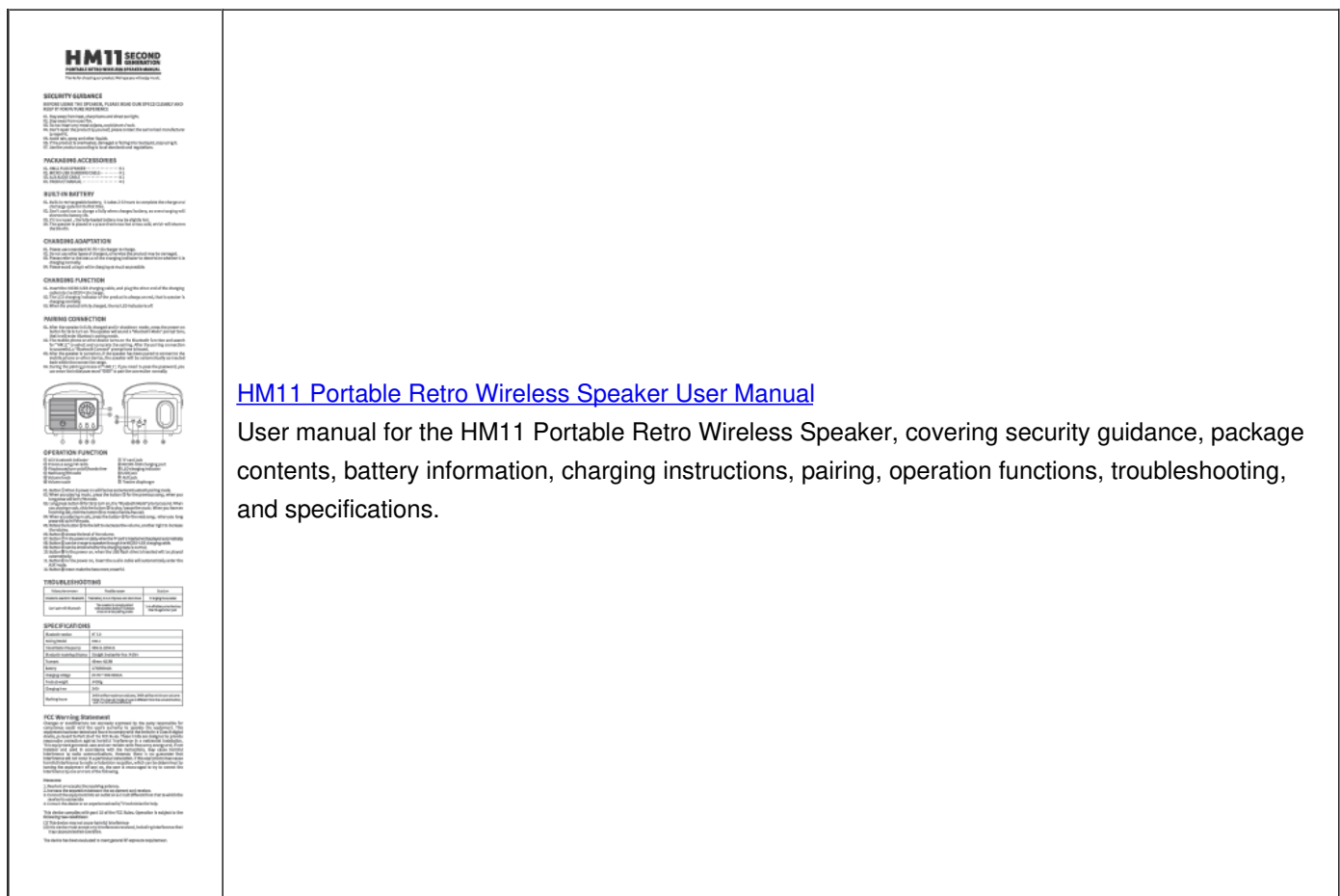
For any questions, technical assistance, or warranty claims, please contact Dosmix customer support through the retailer where you purchased the product or visit the official Dosmix website for contact information.

You can also refer to the official Instructions for Use (IFU) PDF document for additional details: [Dosmix HM11 User Manual \(PDF\)](#)

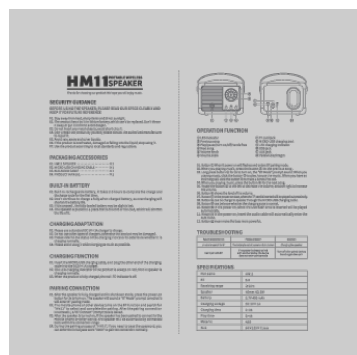
Related Documents - HM11

	<p><a href="#">HM11 Portable Wireless Speaker User Manual</a></p> <p>This manual provides instructions for setting up, operating, and troubleshooting the HM11 Portable Wireless Speaker. It covers features like Bluetooth pairing, charging, and audio playback.</p>
	<p><a href="#">HM11 Portable Retro Wireless Speaker User Manual</a></p> <p>User manual for the HM11 Portable Retro Wireless Speaker, covering security guidance, package contents, battery information, charging instructions, pairing, operation functions, troubleshooting, and specifications.</p>
	<p><a href="#">HM11 Bluetooth Speaker User Manual and Specifications</a></p> <p>Comprehensive guide for the HM11 Bluetooth Speaker, covering setup, usage, troubleshooting, and technical specifications. Learn how to pair devices, charge the speaker, and utilize its features.</p>
	<p><a href="#">HM11 Speaker User Manual and Specifications</a></p> <p>Comprehensive user manual for the HM11 Bluetooth Speaker, covering setup, operation, safety guidelines, technical specifications, and FCC compliance.</p>
	<p><a href="#">HM11 Portable Wireless Speaker User Manual</a></p> <p>This manual provides instructions for setting up, operating, and troubleshooting the HM11 Portable Wireless Speaker. It covers features like Bluetooth pairing, charging, and audio playback.</p>





## Documents - Dosmix – HM11



## HM11 Portable Wireless Speaker User Manual

This manual provides instructions for setting up, operating, and troubleshooting the HM11 Portable Wireless Speaker. It covers features like Bluetooth pairing, charging, and audio playback.

lang: **score:22** filesize: 1.14 M page count: 1 document date: 2023-08-29