

**Manuals+**

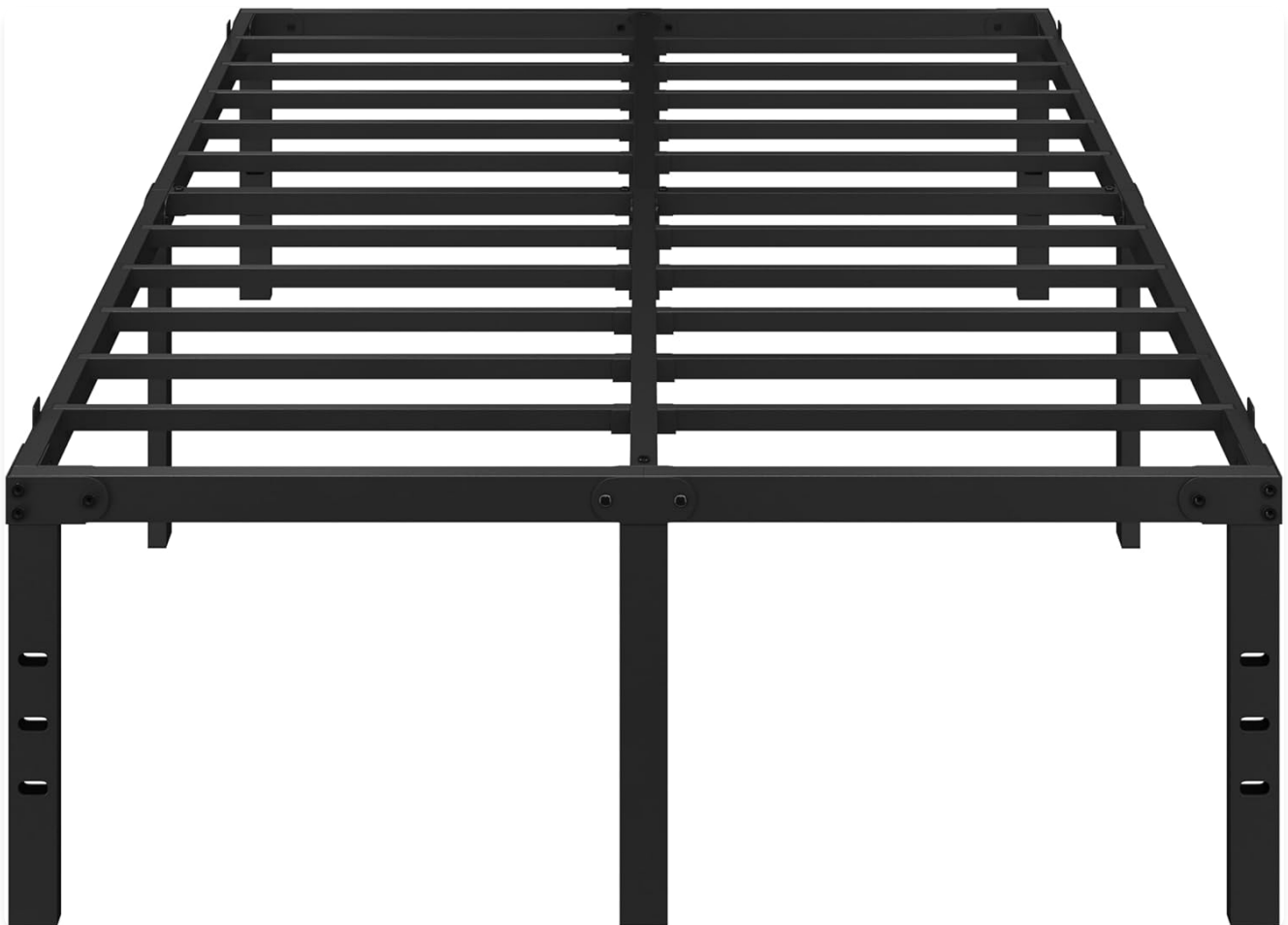
[Q & A](#) | [Deep Search](#) | [Upload](#)

**Yaheetech 614041**

# Yaheetech 18 Inch Full Metal Platform Bed Frame Instruction Manual

Model: 614041

Brand: Yaheetech



**Image Description:** An assembled Yaheetech 18 Inch Full Metal Platform Bed Frame, showcasing its sturdy design and height, ready for use with a mattress.

## INTRODUCTION

This instruction manual provides detailed guidance for the assembly, operation, and maintenance of your Yaheetech 18 Inch Full Metal Platform Bed Frame. Designed for durability and convenience, this bed frame offers robust support for your mattress and ample under-bed storage space. Please read all instructions carefully before beginning assembly to ensure safe and proper use of your product.

## IMPORTANT SAFETY INFORMATION

- Do not exceed the maximum weight capacity of 800 lb. Overloading can cause damage to the frame and potential injury.
- Be cautious of sharp edges on the metal components during assembly. It is recommended to wear gloves.
- Ensure all bolts are securely tightened before placing a mattress on the frame and before initial use. Periodically check and re-tighten all connections.
- Do not allow children to play on or under the bed frame during assembly or without adult supervision.
- Avoid standing or jumping on the bed frame, as this can compromise its structural integrity.

## PACKAGE CONTENTS

Before beginning assembly, carefully unpack all components and verify that all parts listed below are present and undamaged. If any parts are missing or damaged, please contact customer support immediately.

- Bed Frame Components (Side Rails, Crossbars, Legs)
- Steel Slats
- Assembly Hardware (Bolts, Washers, Allen Wrench, Wrench)
- Installation Manual (This document)



The slats are flush with the sides to help save space, allowing the bed to be placed close to the wall

**Image Description:** All individual components of the Yaheetech bed frame, including the folded sections, loose bars, and hardware packets, are neatly laid out on a carpeted floor, ready for assembly.

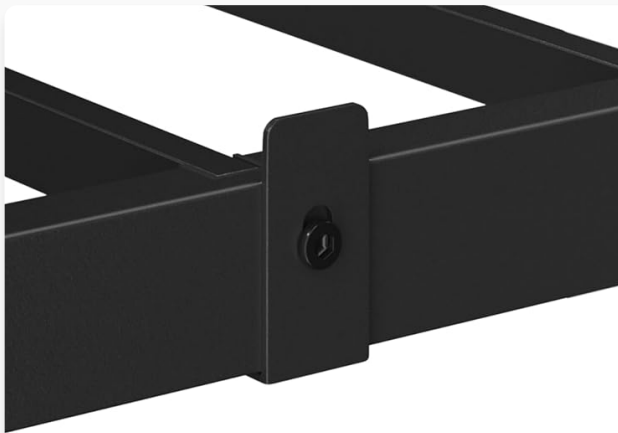
## SETUP AND ASSEMBLY

Follow these steps carefully for a smooth assembly process. It is recommended to assemble the bed frame with two people.

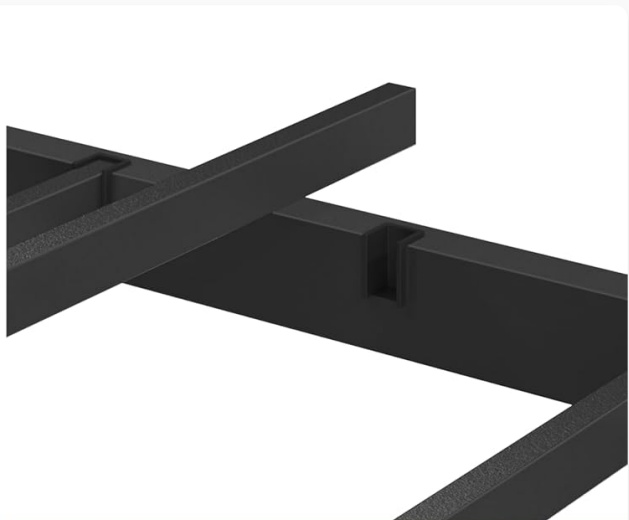
### Step-by-Step Instructions:

1. **Unfold and Position Main Frame Sections:** Carefully unfold the two main side sections of the bed frame. Position them on your desired assembly location, ensuring enough space to work around them.
2. **Connect Side Rails and Legs:** Extend the pre-attached legs and side rails. Secure the connecting points with the provided bolts and the Allen wrench. Do not fully tighten all bolts until the entire frame is assembled.
3. **Assemble Central Support Structure:** Connect the central support bars to the main frame. These bars provide essential stability. Ensure they are correctly aligned before securing them with bolts.

4. **Install Steel Slats:** Place the steel slats into the corresponding plastic slots on the side rails. Ensure each slat is firmly seated to prevent movement and noise. The anti-slip baffles on the sides help keep the mattress in place.
5. **Final Tightening:** Once all components are in place and correctly aligned, systematically tighten all bolts using the provided tools. Ensure all connections are secure for optimal stability and safety.



Anti-Slip Baffles



Easy and Quick Assembly



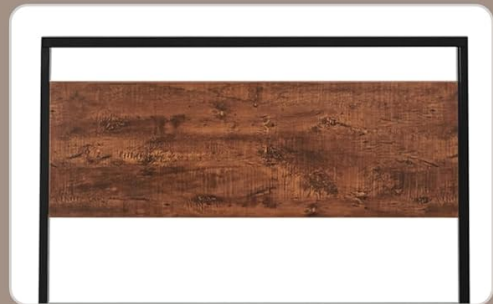
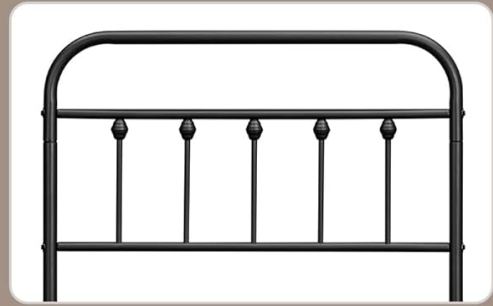
Sturdy Metal Slats



Reserved Holes for Headboard

**Image Description:** A detailed view highlighting the integrated rails and foldable legs of the bed frame, showing how they are designed for easy assembly and feature reserved holes for headboard attachment.

# Compatible with Different Headboards



**Image Description:** A close-up shot illustrating the sturdy metal slats that provide mattress support and the anti-slip baffles designed to prevent the mattress from shifting on the frame.

## Official Assembly Videos:

Your browser does not support the video tag.

**Video Description:** This video provides a detailed installation guide for the Yaheetech 18 Inch Bed Frame (Queen Size), demonstrating each step of the assembly process.

Your browser does not support the video tag.

**Video Description:** A comprehensive installation video for Yaheetech 14/16/18 inch Bed Frames (Full/Queen sizes), offering visual instructions for assembly.

## OPERATING INSTRUCTIONS

Once assembled, your Yaheetech bed frame is ready for use. Place your full-size mattress directly onto the steel slats. No box spring is needed.



- **Mattress Placement:** Position your full-size mattress evenly on the steel slats. The anti-slip baffles will help secure it and prevent unwanted movement.
- **Weight Capacity:** The bed frame supports a maximum weight of 800 lb. Do not exceed this limit to ensure safety and product longevity.
- **Under-Bed Storage:** Fully utilize the 16.5 inches of clearance under the bed for storage. This space is ideal for bins, boxes, or luggage to keep your room tidy and organized.
- **Headboard Compatibility:** The bed frame features pre-drilled holes on the legs for easy attachment of a compatible headboard (additional hardware for headboard attachment is not provided).



**Image Description:** An assembled Yaheetech bed frame with a mattress on top, showcasing two woven storage baskets neatly tucked underneath, highlighting the practical under-bed storage solution.

## MAINTENANCE

- **Cleaning:** Wipe clean with a dry cloth. Avoid abrasive cleaners, harsh chemicals, or excessive moisture that could damage the powder-coated finish.

- **Regular Checks:** Periodically inspect all bolts and connections to ensure they remain tight. Re-tighten if necessary to maintain stability and prevent any potential squeaking.
- **Movement:** When moving the bed frame, lift it rather than dragging it across the floor to prevent damage to the legs, floor, or frame structure.

### TROUBLESHOOTING

| Problem                  | Possible Cause                                    | Solution  |
|--------------------------|---|---|
| Bed frame squeaks        | Loose bolts or slats not fully seated.            | Tighten all bolts securely. Ensure all steel slats are properly placed and firmly seated in their plastic slots.                    |
| Mattress slides on frame | Anti-slip baffles not installed or not effective. | Verify that the anti-slip baffles are correctly installed on both sides of the frame. Ensure the mattress is centered on the frame. |
| Frame feels unstable     | Incomplete assembly or loose connections.         | Review all assembly steps to ensure every part is correctly installed and all bolts are fully tightened.                            |

### SPECIFICATIONS

|                    |                             |
|--------------------|-----------------------------|
| Brand              | Yaheetech                   |
| Model Number       | 614041                      |
| Size               | Full                        |
| Product Dimensions | 75.5"L x 54"W x 18"H        |
| Material           | Steel                       |
| Finish Type        | Powder Coated (Matte Black) |
| Weight Capacity    | 800 lb                      |
| Ground Clearance   | 16.5 Inches                 |
| Assembly Required  | Yes                         |

### WARRANTY AND SUPPORT

For any questions, concerns, or assistance with your Yaheetech product, please contact our customer support team. Refer to your purchase documentation for specific warranty details.

**Yaheetech Customer Service:** [Visit the Yaheetech Store on Amazon](#)