

[manuals.plus](#) /

› [BaByliss](#) /

› [BaByliss Beliss AS960E Hot Air Styler Instruction Manual](#)

BaByliss 2960U

BaByliss Beliss AS960E Hot Air Styler Instruction Manual

Model: 2960U

INTRODUCTION

Thank you for choosing the BaByliss Beliss AS960E Hot Air Styler. This multifunctional styling tool is designed to provide fast drying, straightening, curling, and volumizing for various hair types. With its powerful 1000W motor and interchangeable attachments, you can achieve professional-looking results at home. Please read this instruction manual carefully before use to ensure safe and effective operation.



Image: The BaByliss Beliss AS960E Hot Air Styler, its various attachments, and the product packaging, illustrating the complete set.

IMPORTANT SAFETY INFORMATION

It is crucial to follow these safety guidelines to prevent injury or damage to the appliance.

- Avoid contact with water. Do not use this appliance near bathtubs, showers, basins, or other vessels containing water.
- Do not use near children without supervision. Keep the appliance out of reach of children.
- Always unplug the appliance when not in use, before cleaning, and before attaching or removing accessories.
- Do not operate the appliance with a damaged cord or plug, or if it has malfunctioned or been dropped or damaged in any manner.
- Consult the full user manual for comprehensive safety instructions and warnings.

PACKAGE CONTENTS

The BaByliss Beliss AS960E Hot Air Styler package includes the following items:

- BaByliss Beliss Hot Air Styler Unit

- 50mm Volumising Thermal Brush
- 20mm Soft Bristle Brush
- Straightening Attachment
- Drying Nozzle
- Storage Bag
- Instruction Manual (this document)



Image: The BaByliss Beliss AS960E Hot Air Styler handle with the 50mm brush attached, alongside the 20mm brush, straightening attachment, and drying nozzle.

SETUP

1. **Unpack the Styler:** Carefully remove the BaByliss Beliss Hot Air Styler and all its accessories from the packaging.
2. **Clean Components:** Before first use, wipe all removable parts with a damp cloth to ensure they are clean.
3. **Attach Desired Accessory:**
Align the desired attachment (e.g., 50mm volumising brush, 20mm soft bristle brush, straightening attachment, or drying nozzle) with the main styler unit. Push and twist gently until it clicks securely into place. Ensure the attachment is firmly seated before use.
4. **Connect to Power:** Plug the styler into a suitable electrical outlet.

OPERATING INSTRUCTIONS

The BaByliss Beliss AS960E Hot Air Styler offers versatile styling options. Follow these steps for optimal results:

1. **Preparation:** Ensure your hair is towel-dried and slightly damp. The styler works best on hair that is not soaking wet.
2. **Select Settings:** Turn on the styler and select your desired temperature and airflow settings using the controls on the handle. The styler typically has 2 heat settings and a cool shot setting.

3. Using the Drying Nozzle:



Image: The drying nozzle attachment, designed for initial drying of hair.

Attach the drying nozzle to quickly remove excess moisture from your hair before styling with other attachments. Direct the airflow towards sections of your hair, moving the styler continuously.

4. Using the 50mm Volumising Thermal Brush:

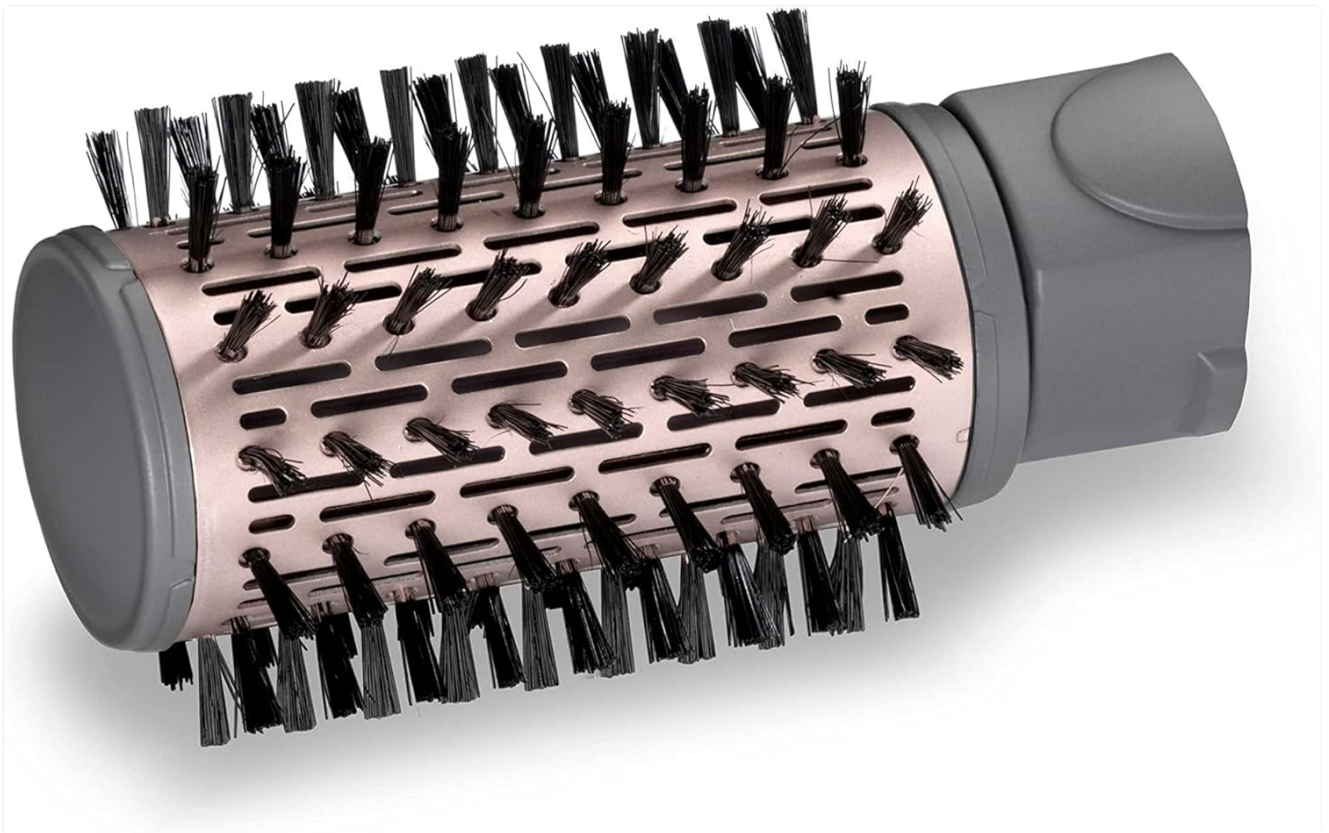


Image: The 50mm volumising thermal brush attachment, featuring bristles and a ceramic barrel for adding volume and shine.

This brush is ideal for adding volume and shine. Section your hair and place the brush underneath a section, close to the roots. Activate the rotating function (if desired) and slowly glide the brush through your hair, rotating it outwards for volume or inwards for a smooth finish. The multi-directional spinning brush allows you to switch rotation direction easily.

5. Using the 20mm Soft Bristle Brush:



Image: The 20mm soft bristle brush attachment, suitable for shaping and creating tighter curls or waves.

Use this smaller brush for shaping, creating tighter curls, or adding definition to shorter layers. Wrap a section of hair around the brush and hold for a few seconds before releasing. Note: This brush typically does not rotate.

6. Using the Straightening Attachment:



Image: The straightening attachment, designed with comb-like teeth to smooth and straighten hair.

For sleek, straight styles, attach the straightening nozzle. Take small sections of hair and slowly glide the attachment from roots to ends. The airflow and comb-like design help to smooth the hair cuticle.

7. **Cool Setting:** Once styling is complete, use the cool setting to set your style and add lasting hold.
8. **Finish:** Turn off the styler and unplug it from the power outlet. Allow the styler and attachments to cool down completely before storing.

MAINTENANCE AND CLEANING

Regular cleaning and proper maintenance will extend the life of your BaByliss Beliss Hot Air Styler.

1. **Unplug and Cool Down:** Always ensure the styler is unplugged and completely cool before cleaning.
2. **Clean Attachments:** Remove any hair tangled in the brushes using a comb or your fingers. Wipe the attachments with a soft, damp cloth. Do not use abrasive cleaners or solvents.
3. **Clean Main Unit:** Wipe the main styler unit with a soft, damp cloth. Ensure no water enters the internal components.
4. **Air Filter:** Periodically check and clean the rear air filter to prevent lint and dust buildup, which can affect performance. Gently remove any debris.
5. **Storage:** Store the styler and its attachments in the provided storage bag in a cool, dry place. Do not wrap the power cord around the appliance, as this can damage the cord.



Image: The grey storage bag provided with the BaByliss Hot Air Styler, suitable for keeping the unit and its attachments organized and protected.

TROUBLESHOOTING

If you encounter any issues with your BaByliss Beliss Hot Air Styler, please refer to the following common solutions:

- **Styler not turning on:**
 - Ensure the power cord is securely plugged into a working electrical outlet.
 - Check if the power switch on the styler is in the "ON" position.
 - Verify that the circuit breaker has not tripped.
- **Reduced airflow or heating:**
 - The air filter at the rear of the styler may be blocked. Unplug the unit and clean the filter as described in the Maintenance section.
 - Ensure no hair or debris is obstructing the air vents on the attachments.

- **Attachments not rotating (for 50mm brush):**
 - Ensure the attachment is correctly and securely fitted to the main unit.
 - Check that the rotation button is being pressed correctly.
 - Excessive hair tangled in the brush can prevent rotation. Clean the brush thoroughly.
- **Hair getting tangled:**
 - Always work with small sections of hair.
 - Ensure hair is detangled before using the styler.
 - If using a rotating brush, ensure you are releasing the hair smoothly and not allowing it to wrap too many times.

SPECIFICATIONS

Feature	Detail
Brand	BaByliss
Model Number	2960U (AS960E)
Power	1000 Watts
Power Source	Corded Electric
Material	Ceramic
Color	Grey
Heat Settings	2 Heat, 1 Cool Setting
Cord Length	2m Swivel Cord
Included Attachments	50mm Volumising Thermal Brush, 20mm Soft Bristle Brush, Straightening Attachment, Drying Nozzle
Special Features	Ionic Frizz-Control, Multi-directional Spinning Brush (50mm)
Product Dimensions	38 x 15 x 15 cm; 1.15 kg
Country of Origin	China

WARRANTY

The BaByliss Beliss AS960E Hot Air Styler comes with a **2-year guarantee** from the date of purchase. Please retain your proof of purchase for any warranty claims. This warranty covers manufacturing defects under normal household use. It does not cover damage resulting from misuse, accident, unauthorized service, or commercial use. For full warranty terms and conditions, please refer to the warranty card included in your product packaging or contact customer support.

CUSTOMER SUPPORT

If you require further assistance, have questions about your product, or need to make a warranty claim, please contact BaByliss customer support.

- Refer to the contact information provided in your product packaging.
- Visit the official BaByliss website for FAQs and support resources.

