

Brio V2 Black

Brio Beardscape V2 Beard Trimmer User Manual

Model: V2 Black

1. INTRODUCTION

The Brio Beardscape V2 is a professional-grade beard and body trimmer designed for precision grooming. It features a low-friction ceramic blade, multiple speed settings, and a digital display for an enhanced trimming experience. This manual provides essential information for the setup, operation, and maintenance of your Beardscape V2 trimmer.



Image: Brio Beardscape V2 Trimmer, showcasing the device, charging dock, guards, and cleaning brush.

2. PACKAGE CONTENTS

Ensure all items are present in your Beardscape V2 package:

- Brio Beardscape V2 Trimmer
- Low Friction Ceramic Blade (pre-installed)
- Charging Dock
- USB-C Charger
- Charging Cord
- Reversible Length Guards (various sizes)
- Cleaning Brush
- Guard Size Chart



Image: Detailed view of the Beardscape V2 trimmer and its included accessories.

3. KEY FEATURES

- **Low-Friction Ceramic Blade:** 4 times tougher than stainless steel, providing a smoother cutting experience and reducing heat and irritation.
- **Digital Battery Life Display:** Provides accurate battery life indication for precise grooming sessions.
- **Long Battery Timing:** Up to 4 hours of runtime on a single charge.
- **Adjustable Speed Settings:** 5 adjustable speed settings for versatile grooming.
- **Micro-Adjuster Setting:** Allows for precise blade adjustment for fading and blending.
- **Ergonomic Grip:** Designed for comfortable and secure handling.
- **Travel Lock:** Prevents accidental activation during travel.

4x HARDER THAN STEEL CERAMIC BLADE

Lower Friction, No Heat, No Irritation



Image: The durable ceramic blade, designed for smooth cuts.



Image: Trimmer with icons indicating ceramic blade, adjustable settings, ergonomic grip, travel lock, speed settings, LED display, and fast charging.

Powerful TRIMMER



Lithium ion battery

2200 mAh



240 Minutes

running time



LED Display

- > Blade setting
- > Trimmer Speed
- > Battery Time



Image: Illustration of the 2200 mAh Lithium-ion battery and LED display showing blade setting, trimmer speed, and battery time.

4. SETUP

1. **Initial Charge:** Before first use, fully charge your Beardscape V2 trimmer. Place the trimmer in the charging dock and connect the USB-C charger to a power outlet. The digital display will show charging progress. A full charge provides up to 4 hours of runtime.
2. **Attaching Guards:** Select the desired reversible length guard based on your preferred hair length. Align the guard with the trimmer head and firmly snap it into place. Refer to the included Guard Size Chart for specific length measurements.



Image: The Brio Beardscape V2 Trimmer and its accessories ready for use in a bathroom setting.

5. OPERATING THE TRIMMER

1. **Power On/Off:** Press the power button (orange circle) to turn the trimmer on or off.
2. **Adjusting Speed (RPM):** Use the '+' and '-' buttons to adjust the motor's RPM (Revolutions Per Minute). The trimmer offers 5 speed settings, ranging from 5000 RPM to 7000 RPM. Higher RPM provides a faster, more powerful cut, while lower RPM is suitable for sensitive areas or finer hair. The digital display will show the current RPM.
3. **Micro-Adjuster Setting:** For precise length control, especially for fading and blending, use the micro-adjuster slider located above the power button. This moves the clipper blade up or down relative to the ceramic blade, allowing for fine adjustments between 1mm and 1.9mm.
4. **Trimming:** Gently guide the trimmer against the direction of hair growth. For best results, ensure hair is clean and dry.
5. **Travel Lock:** To activate the travel lock, press and hold the power button for 3 seconds until the lock icon appears on the display. To unlock, repeat the process.

Cutting Length Guide

The Beardscape V2 offers an extensive cutting range from 1 mm to 18 mm, with precise stubble length options between 1 mm and 1.9 mm. The following table details the various cutting lengths achievable with the micro-adjuster and included guards:

Hair Size (mm)	Blade Adjustment (mm)	Guard Size (mm)
0.2	Zero Blade	None
1	1	None
1.3	1.3	None
1.6	1.6	None
1.9	1.9	None
2	1	1mm
2.3	1.3	1mm
2.6	1.6	1mm
2.9	1.9	1mm
3	1	2mm
3.3	1.3	2mm
3.6	1.6	2mm
3.9	1.9	2mm
4	1	3mm
4.3	1.3	3mm
4.6	1.6	3mm
4.9	1.9	3mm
7	1	6mm
7.3	1.3	6mm
7.6	1.6	6mm
7.9	1.9	6mm
9.5	1	9mm
10	1	9mm
10.3	1.3	9mm
10.6	1.6	9mm
12	1	12mm
12.3	1.3	12mm

Hair Size (mm)	Blade Adjustment (mm)	Guard Size (mm)
12.6	1.6	12mm
12.9	1.9	12mm
15	1	15mm
15.3	1.3	15mm
15.6	1.6	15mm
15.9	1.9	15mm
18	1	18mm
18.3	1.3	18mm
18.6	1.6	18mm
18.9	1.9	18mm

Table: Comprehensive cutting length guide for the Beardscape V2.

PRECISELY PERFECT STUBBLES
with 36 adjustable lengths

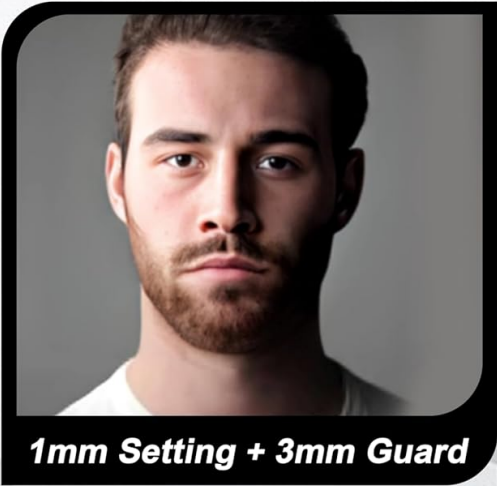
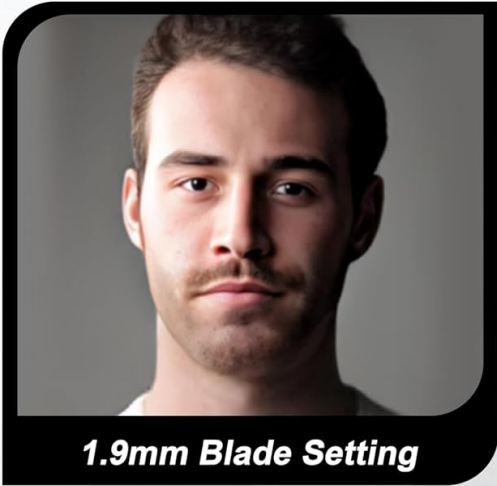
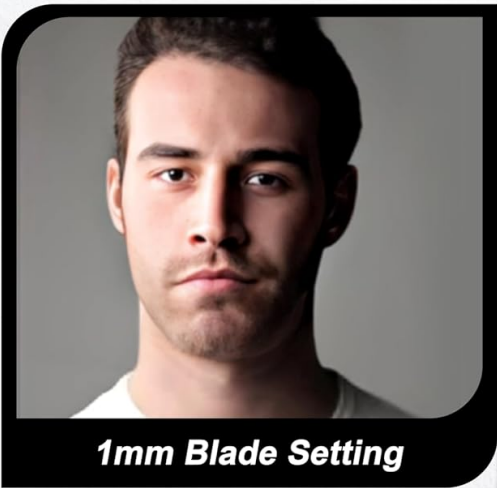
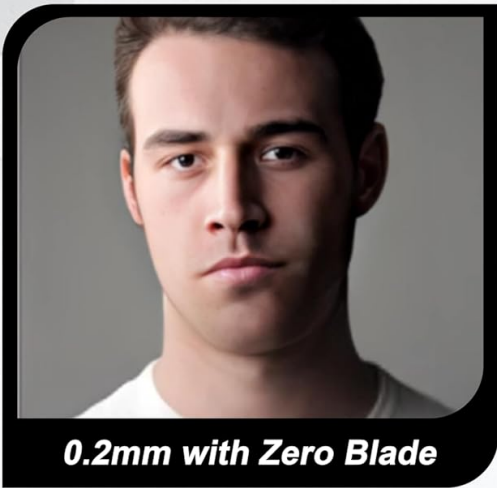


Image: Visual guide to various stubble lengths from 0.2mm to 4mm.



Image: Trimmer highlighting its ceramic blade, adjustable settings, ergonomic grip, travel lock, speed settings, digital display, and fast charging.

Image: Detailed view of the digital display showing battery life, blade length, trimmer speed, charging status, and travel lock indicator.

Official Product Video

Your browser does not support the video tag.

Video: A user demonstrating the Brio Beardscape V2 Trimmer's features, including power, speed adjustment, and micro-adjustment settings. The video also highlights the included accessories and the guard size chart.

6. MAINTENANCE

- Cleaning the Blades:** After each use, turn off the trimmer and remove any attached guards. Use the provided cleaning brush to remove loose hairs from the blades and the trimmer body. For a more thorough clean, the ceramic blade can be detached and rinsed under water. Ensure the blade is completely dry before reattaching.
- Blade Lubrication:** Periodically apply a small amount of clipper oil (not included) to the blades to maintain optimal performance and longevity.
- Storage:** Store the trimmer and its accessories in a dry, cool place. Use the charging dock for convenient storage and to ensure the trimmer is always charged.

7. TROUBLESHOOTING

- Trimmer not turning on:** Ensure the trimmer is fully charged. If the battery is low, place it on the

charging dock. Check if the travel lock is activated (indicated by a lock icon on the display); if so, press and hold the power button for 3 seconds to unlock.

- **Poor cutting performance / pulling hair:** Clean the blades thoroughly to remove any trapped hair or debris. Lubricate the blades with clipper oil. Ensure the correct guard is properly attached. If issues persist, the blade may need replacement.
- **Difficulty navigating controls:** Familiarize yourself with the power, speed adjustment, and micro-adjuster buttons. Practice using them without the trimmer running to get accustomed to their functions.

8. SPECIFICATIONS

- **Model:** V2 Black
- **Blade Type:** Low-Friction Ceramic
- **Battery:** 1 Lithium Ion battery (included)
- **Battery Capacity:** 2200 mAh
- **Running Time:** Up to 240 minutes (4 hours)
- **Speed Settings:** 5000 RPM to 7000 RPM
- **Cutting Range:** 1 mm to 18 mm (with guards), 1 mm to 1.9 mm (micro-adjuster)
- **Power Source:** AC
- **Package Dimensions:** 9.45 x 4.41 x 3.9 inches
- **Weight:** 1.08 Pounds
- **Manufacturer:** Brio Product Group
- **First Available:** November 3, 2021




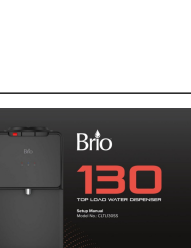

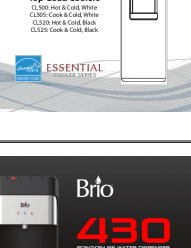
9. WARRANTY AND SUPPORT

The Brio Beardscape V2 facial hair trimmer is backed by a reliable **2-year warranty**. For any product inquiries, technical assistance, or warranty claims, please contact Brio customer support. Refer to the official Brio website or product packaging for the most current contact information.

10. SAFETY GUIDELINES

- Avoid use on infants.
- Keep away from water to prevent electrical hazards. This device is not waterproof.
- Do not disassemble the trimmer. Refer all servicing to qualified personnel.
- Keep out of reach of children.
- Use only the provided charging cable and adapter.

Related Documents - V2 Black

	<p>Brío Adjustable Bed Base Owners Manual: Installation, Operation, and Troubleshooting</p> <p>Comprehensive owners manual for the Brío adjustable bed base, covering installation, remote control functions for models 20, 30, and 60, troubleshooting tips, and available accessories. Learn how to set up and operate your Brío adjustable base safely and effectively.</p>
	<p>Brío G10-U Tankless RO Water Filtration System Setup and Installation Guide</p> <p>This manual provides comprehensive setup, installation, operation, and maintenance instructions for the Brío G10-U Tankless 2:1 RO Filtration System (Model ROSL500). Learn how to install and use your system for purified drinking water.</p>
	<p>Brío CLBL520SCBLK Bottom-Load Water Dispenser Setup Manual</p> <p>Setup manual for the Brío CLBL520SCBLK bottom-load water dispenser. Includes safety information, installation instructions, operation guide, troubleshooting tips, cleaning, maintenance, and warranty details.</p>
	<p>Brío 130 Top Load Water Dispenser Setup Manual and Guide</p> <p>Setup manual for the Brío 130 Top Load Water Dispenser (Model CLTL130SS). Includes safety information, product features, installation instructions, operation guide, troubleshooting, cleaning, maintenance, and warranty details.</p>
	<p>Brío CL500 Essential Series Water Cooler User's Manual</p> <p>Comprehensive user's manual for Brío CL500 Essential Series Top-Load Water Coolers, covering safety precautions, installation, operation, troubleshooting, parts, and specifications. Includes model details for CL500, CL505, CL520, and CL525.</p>
	<p>Brío 430 Point-of-Use Water Dispenser Setup Manual</p> <p>This setup manual guides users through the installation, operation, maintenance, and troubleshooting of the Brío 430 Point-of-Use Water Dispenser (Model CLPOU430UVRO4) for safe and effective use.</p>

