

Voluas VL001

Voluas Automatic Pet Feeder Instruction Manual

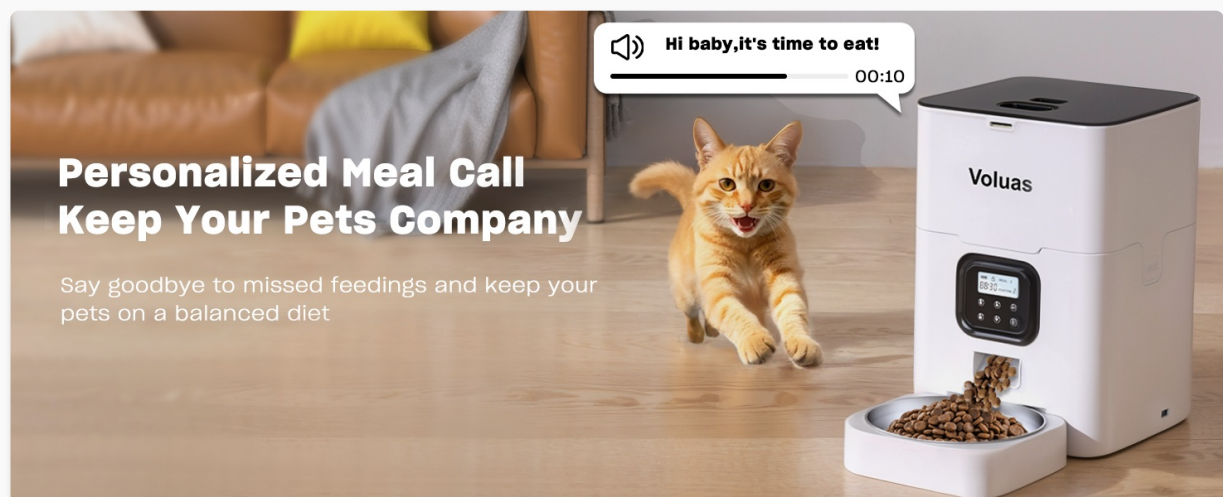
Model: VL001

INTRODUCTION

Thank you for choosing the Voluas Automatic Pet Feeder. This device is designed to provide convenient and reliable feeding for your cats and dogs, ensuring they receive their meals on schedule with precise portion control. Please read this manual thoroughly before use to ensure proper operation and maintenance.

SAFETY INFORMATION

- Always use the provided power adapter.
- Keep the feeder indoors and away from direct sunlight or moisture.
- Do not immerse the base unit in water. Only removable parts are washable.
- Ensure the feeder is placed on a stable, level surface.
- Keep out of reach of small children and pets when not in use or during cleaning.
- Use only dry pet food with kibble sizes between 2-10mm to prevent clogging. Do not use wet food or kibble larger than 10mm.



The feeder features a safety button lock on the lid to prevent pets from accessing the food compartment. This ensures food security and prevents accidental overeating.

PACKAGE CONTENTS

- Voluas Automatic Pet Feeder Main Unit
- Stainless Steel Food Bowl
- Power Adapter
- USB Cable
- Desiccant Bag (pre-installed or separate)
- User Manual (this document)

PRODUCT OVERVIEW

Familiarize yourself with the components of your Voluas Automatic Pet Feeder:



The main unit of the Voluas Automatic Pet Feeder, showing the control panel, food dispenser, and stainless steel bowl.

Anti-clog Design

No more worrying about food clogs when you are out



Internal view highlighting the anti-clogging mechanism, designed to ensure smooth food dispensing without blockages. The safety button lock on the lid is also visible.



Use 3D alkaline batteries as a backup power supply to ensure peace of mind even during power failures



The feeder gets its power from a USB power adapter

Note: Batteries are not included

The feeder utilizes a rotating design to ensure precise food portioning, helping to regulate meal sizes and prevent pet obesity.

Does the cat often steal food?

Use the safety lock to firmly secure the food compartment.



The food-grade stainless steel bowl is hygienic and helps prevent feline acne, providing a clean eating surface for your pet.

SETUP

1. Power Supply

The Voluas Automatic Pet Feeder offers dual power options:

- **Wired Connection:** Connect the USB cable to the feeder and the power adapter, then plug it into a wall outlet.
- **Battery Power:** For portability or as a backup during power outages, insert 3 D-cell batteries (not included) into the battery compartment at the bottom of the unit.

Dual Power Supply

Two modes so your baby won't go hungry



The feeder can be powered by a 5V power adapter via USB cable or by 3 D-cell batteries (not included) for backup during power failures.



Use 3D alkaline batteries as a backup power supply to ensure peace of mind even during power failures. The feeder also gets its power from a USB power adapter.

2. Assembly

1. Place the main unit on a flat, stable surface.

2. Insert the stainless steel bowl into the designated slot at the front of the feeder.
3. Fill the food tank with dry pet food. Ensure the kibble size is between 2-10mm.
4. Close the lid securely, ensuring the safety lock engages.

OPERATING INSTRUCTIONS

1. Setting Current Time

Press and hold the 'SET' button until the clock icon flashes. Use the up/down arrows to adjust the hour, then press 'SET' to confirm and move to minutes. Repeat to set minutes. Press 'SET' again to save.

2. Programming Feeding Times and Portions

The feeder allows for up to 4 daily meals with 0-40 portion choices per meal.



The feeder supports up to 4 meals per day, up to 40 portions per meal, has a 4L food tank, and recommends a kibble size of 2-10mm.



The rotating design ensures precise food portioning



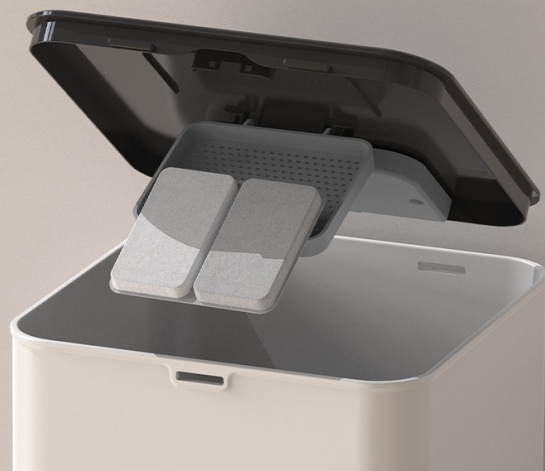
Regulate the amount of food for each meal and avoid pet obesity

The feeder supports automatic feeding, precisely dispensing food according to the set quantity and time. It also allows for manual feeding, where each press dispenses a single, standard portion.

1. Press 'SET' once to enter meal programming mode. The 'MEAL 1' indicator will flash.
2. Use the up/down arrows to set the desired feeding time for Meal 1. Press 'SET' to confirm the time.
3. The 'PORTION' indicator will flash. Use the up/down arrows to set the number of portions for Meal 1 (0-40). Press 'SET' to confirm.
4. Repeat steps 2 and 3 for Meal 2, Meal 3, and Meal 4 as needed. If you do not wish to set a meal, set its portion to 0.
5. After setting all desired meals, press and hold 'SET' to exit programming mode.

How to prevent food from getting damp?

The attached replaceable desiccant bags can help you solve this problem.



This table provides a reference for portion calculation: 1 portion is approximately 2.5 tsp or 1/20 cup. Daily intake examples are provided with corresponding recommended portions. Please note that actual measurements may vary slightly based on kibble density and size.

3. Voice Recording

The feeder allows you to record a 10-second voice message to call your pet at meal times.

Personalized Voice Recording

Recording to remind pets to eat

Hi Honey
It's time to eat!



Personalize your pet's mealtime with a voice recording. The feeder plays your message to remind your pet to eat.

Easy to clean

Decompile the four simple steps, each part (except the base) is washed.

Note: The base cannot be washed
Make sure the food tank is empty before disassembly



Keep your pets company with a personalized meal call. This feature helps maintain a consistent feeding routine and strengthens the bond with your pet.

1. Press and hold the 'REC' button until you hear a beep.
2. Speak your message clearly into the microphone for up to 10 seconds.
3. Release the 'REC' button to save the recording.

4. To play back the recording, press the 'PLAY' button.

4. Manual Feeding

To dispense food manually, simply press the 'MANUAL' button. Each press will dispense one portion of food.

Video demonstrating how to set meal times and portions on the Voluas Automatic Cat Feeder. This video is provided by the seller to illustrate the programming process.

MAINTENANCE

1. Cleaning

Regular cleaning ensures hygiene and extends the life of your feeder. Only the food tank, lid, and stainless steel bowl are washable. The base unit containing electronics should never be immersed in water.



The feeder is designed for easy cleaning, with removable parts that can be washed to maintain a hygienic feeding environment for your pet.



Automatic feeding:
precisely dispensing the food according to
the set quantity and time



Manual Feeding:
Each press dispenses a single, standard
portion

Follow these four simple steps to disassemble the feeder for cleaning. All parts except the base can be washed. Ensure the food tank is empty before disassembly.

1. Unplug the feeder and remove any remaining food.
2. Remove the lid and the food tank.
3. Detach the stainless steel bowl.
4. Wash the lid, food tank, and stainless steel bowl with mild soap and water. Rinse thoroughly.
5. Allow all parts to air dry completely before reassembling.
6. Wipe the base unit with a damp cloth if needed, but do not submerge.

2. Desiccant Replacement

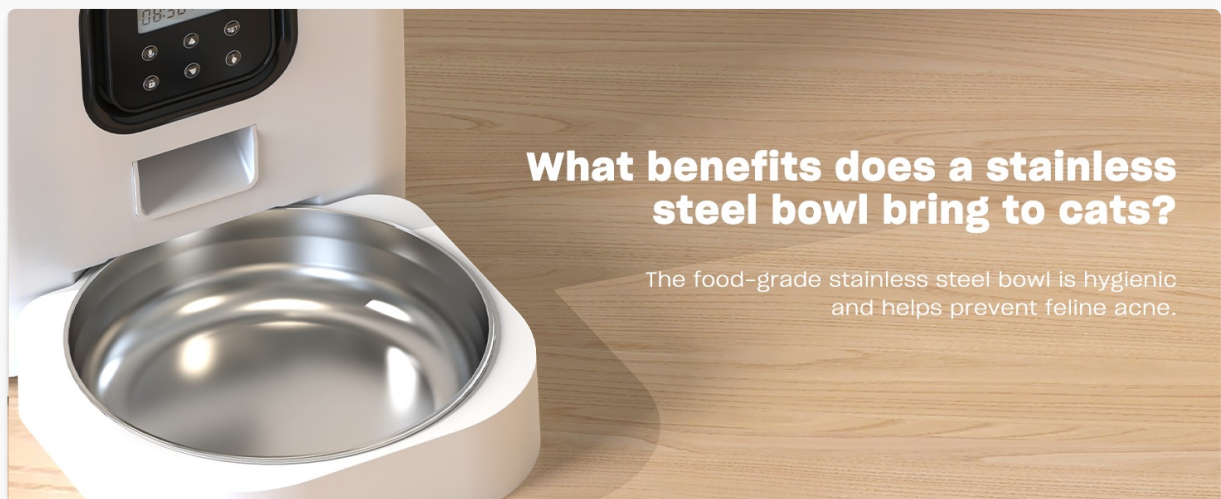
The feeder includes a replaceable desiccant bag to keep food fresh and extend its shelf life.

Replaceable Desiccant

Preserves freshness and extends shelf life of food



The replaceable desiccant bag helps preserve food freshness and extends its shelf life, ensuring your pet's food remains dry and palatable.



What benefits does a stainless steel bowl bring to cats?

The food-grade stainless steel bowl is hygienic and helps prevent feline acne.

The attached replaceable desiccant bags can help prevent food from getting damp, maintaining its quality.

Replace the desiccant bag every 1-3 months, depending on humidity levels, to ensure optimal food freshness.

TROUBLESHOOTING

| Problem | Possible Cause | Solution |
|---------------------------------|--|--|
| Feeder not dispensing food. | No power; Food tank empty; Food clogged; Incorrect settings. | Check power connection/batteries; Refill food tank; Clear any food blockages; Verify programmed meal times and portions. |
| Food dispensing inconsistently. | Kibble size too large/small; Food tank not properly seated. | Ensure kibble is 2-10mm; Re-seat food tank securely. |
| Voice recording not playing. | No recording saved; Low battery. | Re-record message; Replace batteries. |
| Display not working. | No power; Batteries drained. | Check power connection; Replace batteries. |

Portion Calculation Reference

1 portion \approx 2.5 tsp \approx 1/20 cup

| Daily Intake | 1/4 cup (4 tbsp) (12 tsp) | 1/2 cup (2.8 tbsp) (24 tsp) | 3/4 cup (12 tbsp) (36 tsp) | 1 cup (16 tbsp) (48 tsp) | 2 cup (32 tbsp) (96 tsp) |
|----------------------|---------------------------------|-----------------------------------|----------------------------------|--------------------------------|--------------------------------|
| Recommended Portions | 5 portions | 10 portions | 15 portions | 20 portions | 40 portions |

Please note that the portion calculation table provided is only a reference and may have slight variations due to the unique characteristics of each pet food. Keep in mind that there might be minor differences in actual measurements. Thank you for your understanding.

To reduce food jamming, use dry kibble with sizes ranging from 2-10mm (0.07-0.4 inches). Do not use wet pet food or kibble with a diameter over 10mm.

SPECIFICATIONS


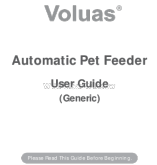



- **Model Name:** VL001
- **Capacity:** 4L / 16.9 Cups
- **Dimensions (LxWxH):** 7 x 7 x 11 inches
- **Item Weight:** 3.65 pounds (1.66 Kilograms)
- **Material:** White Opaque (Plastic) with Stainless Steel Bowl
- **Power Supply:** 5V USB Power Adapter (Included) or 3 x D-cell Batteries (Not Included)
- **Recommended Kibble Size:** 2-10mm
- **Meals Per Day:** 1-4
- **Portions Per Meal:** 0-40
- **Voice Recording:** Up to 10 seconds
- **Target Species:** Cats, Dogs, Small Animals
- **Care Instructions:** Keep Indoors

WARRANTY AND SUPPORT

Voluas provides a standard warranty for this product. For detailed warranty information, product support, or to purchase replacement parts, please visit the official Voluas store on Amazon or contact customer service through your purchase platform. Keep your purchase receipt for warranty claims.

Thank you for choosing Voluas. We are committed to providing quality products for your beloved pets.

Related Documents - VL001

| | |
|--|--|
|  <p>Automatic Pet Feeder User Guide (Generic)</p> <p>Please Read This Guide Before Registering</p> | <p>Voluas Automatic Pet Feeder User Guide</p> <p>User guide for the Voluas Automatic Pet Feeder, providing instructions on setup, features, operation, troubleshooting, and cleaning.</p> |
|  <p>Voluas® Automatic Pet Feeder User Guide (Generic)</p> <p>Please Read This Guide Before Registering</p> | <p>Voluas Automatic Pet Feeder User Guide</p> <p>Comprehensive user guide for the Voluas Automatic Pet Feeder, covering setup, features, programming feeding schedules, troubleshooting, and maintenance for models VL001, VL002, VL003, and VL004. Learn how to operate and care for your pet's automatic food dispenser.</p> |
|  <p>Manual V-L001-WIFI</p> | <p>Voluas VL001-WIFI Automatic Pet Feeder User Manual</p> <p>User manual for the Voluas VL001-WIFI Automatic Pet Feeder by Dongguan Dirui Electronic Technology Co., Ltd. Features, setup, app operation, troubleshooting, and cleaning guide.</p> |
|  <p>Manual PAF-A06B</p> | <p>Voluas Automatic Pet Feeder with WiFi User Manual and Setup Guide</p> <p>Detailed user manual for the Voluas Automatic Pet Feeder with WiFi. Covers setup, app operation, voice recording, scheduling, troubleshooting, and FCC compliance for model PAF-A06B.</p> |
|  <p>Manual PAF-A06B</p> | <p>Automatic Pet Feeder with WiFi Manual - Smart App Operation</p> <p>User manual for the Automatic Pet Feeder with WiFi, detailing features, assembly, use, function introduction, key operations, app setup, troubleshooting, and cleaning instructions.</p> |