

## EMOOR bh-llc-tv501--wh

# EMOOR TV Stand Instruction Manual

Model: bh-llc-tv501--wh

## 1. INTRODUCTION

This manual provides essential information for the safe and efficient use of your EMOOR TV Stand. Please read these instructions carefully before assembly and operation, and retain them for future reference. This self-standing television stand is designed for TVs between 32V and 60V, with a maximum weight of 40kg. It features adjustable height and angle, a movable shelf, and integrated cord management for a clean setup.



Image: The EMOOR TV Stand in white, supporting a television. The stand features a minimalist design with a base and a central column.

## 2. SAFETY INFORMATION

---

- Ensure the TV stand is placed on a stable, level surface to prevent tipping.

- Do not exceed the maximum load capacity of 40kg for the main unit and 5kg for the shelf.
- Always use the included anti-tip parts to secure the stand and prevent accidental falls.
- Keep children and pets away from the stand during assembly and adjustment.
- Verify that your television meets all compatibility requirements before attempting installation.

### 3. SETUP INSTRUCTIONS

---

#### 3.1 Unpacking and Component Check

Carefully unpack all components and verify against the parts list (not provided in this document, refer to packaging). Ensure no parts are missing or damaged. Assembly time is approximately 30 minutes.

#### 3.2 TV Compatibility Requirements

Before assembly, confirm your television meets the following conditions:

- **Weight:** Under 40kg.
- **Type:** Wall-mount compatible model.
- **Screw Holes:** Has four screw holes on the back.
- **Screw Hole Distance:** The distance from the display surface to all screw holes must be equal.
- **Original Stand:** The TV's original stand must be removable.

## 設置可能なテレビの条件

壁掛け  
対応機種

重量  
**40kg以下**

サイズ  
**32v-60v**

- ① テレビの裏にネジ穴が4つある
- ② ネジ穴の間隔が上記のVESA規格のサイズ
- ③ ディスプレイからネジ穴の距離が全て同じ
- ④ スタンドが取り外せる

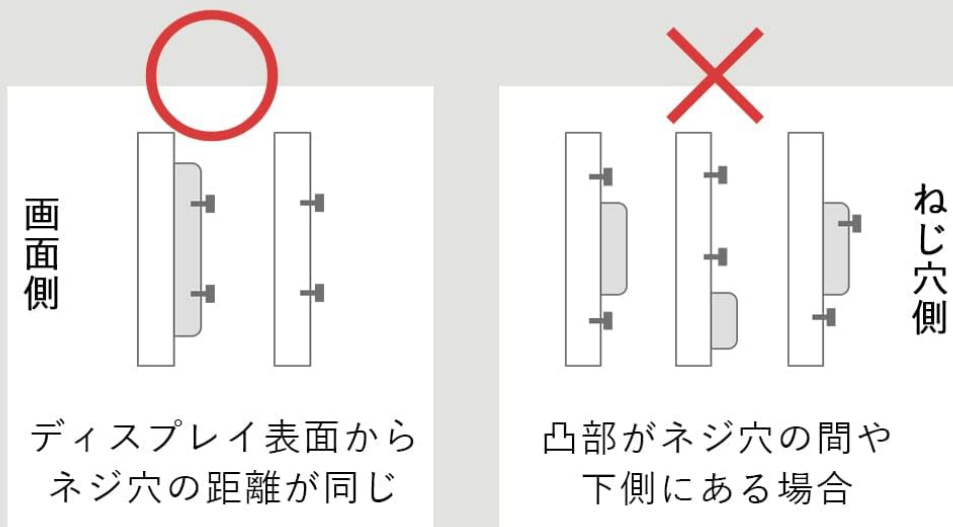


Image: A visual guide showing the conditions for TV installation, including weight, wall-mount compatibility, and screw hole requirements.

### 3.3 VESA Standard Compatibility

The stand supports VESA mounting patterns (Width x Height in mm):

- 200x200
- 300x200
- 300x300
- 400x200
- 400x300
- 400x400

## VESA規格対応

映像機器を、壁掛け金具・アーム・スタンドなどに  
取り付ける際に使うネジ穴の間隔について定められた  
国際標準規格に対応しています。

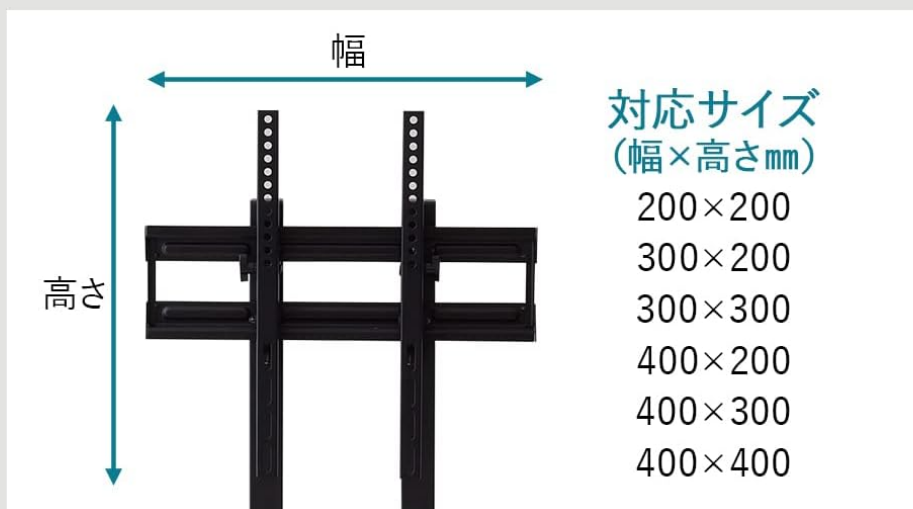


Image: A diagram illustrating various VESA mounting hole patterns and their corresponding dimensions.

### 3.4 Included Bolts

The following bolt sizes are included for TV attachment:

- M5x14
- M6x14
- M6x30
- M8x30
- M8x50
- M8x80

If these bolts are not suitable for your television, please consult your TV manufacturer for the correct specifications and purchase the appropriate bolts separately from a hardware store.

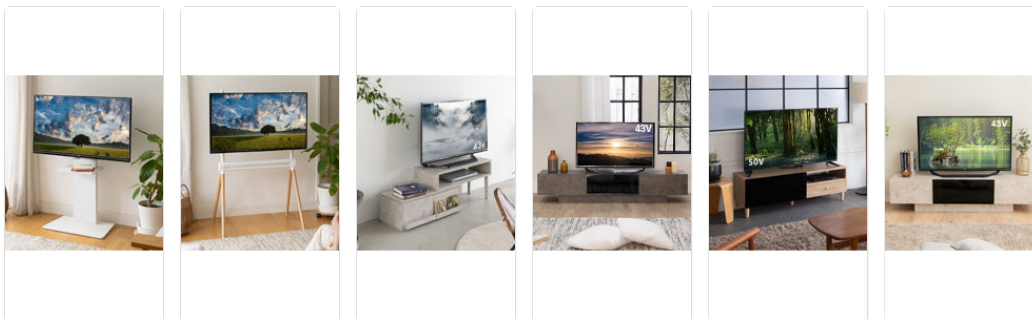


Image: Various bolt sizes (M5x14, M6x14, M6x30, M8x30, M8x50, M8x80) included for TV mounting.

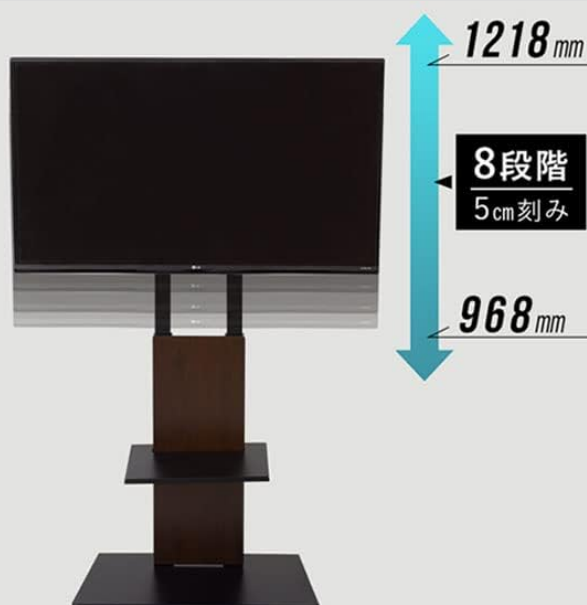
## 4. OPERATING INSTRUCTIONS

### 4.1 Height Adjustment

The TV stand offers 8 stages of height adjustment, allowing you to position your television at an optimal viewing level. The height can be adjusted between approximately 96.8cm and 121.8cm.

#### 高さ8段階調整

目線に合った高さを選べるので、ストレスなく画面を見る事が出来ます。



#### 棚板 無段階調整

無段階に高さを調整出来る棚板は、耐荷重約5kg。ゲーム機などの収納に便利です。



耐荷重  
約5kg



Image: A visual representation of the TV stand's height adjustment range, from 968mm to 1218mm, with 8 distinct settings.



## 4.2 Angle Adjustment

The television's vertical angle can be adjusted to suit your viewing preference, with a range of +7 degrees to -10 degrees. This allows for comfortable viewing from various positions in the room.



Image: A diagram illustrating the TV stand's ability to tilt the television screen vertically, showing a range from +7 degrees to -10 degrees.

## 4.3 Movable Shelf

The stand includes a movable shelf that can be adjusted to any desired height. This shelf has a load capacity of approximately 5kg and is convenient for storing media devices such as recorders or game consoles.

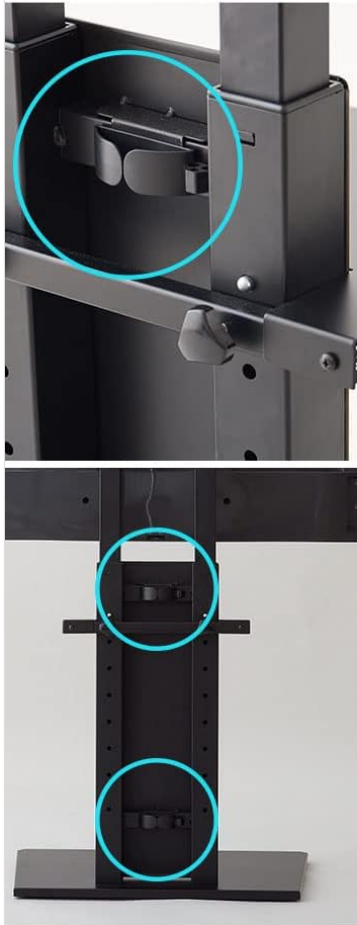
## 4.4 Cord Management

To maintain a tidy appearance, the stand features integrated hooks on the back for organizing power cords and other cables. This helps to prevent clutter and keeps your entertainment area neat.

### CHOOSE 03

## 配線ごちゃごちゃとも、オサラバ

背面に配線を通すフックがあり、  
コード類をまとめられます。



←中央のフックにコードをまとめればスッキリ！

Image: A close-up view of the back of the TV stand, highlighting the hooks designed for cable organization.

## 5. MAINTENANCE

To clean the TV stand, wipe it with a soft, dry cloth. For stubborn dirt, a slightly damp cloth can be used, followed by immediate drying. Avoid using abrasive cleaners, solvents, or harsh chemicals, as these may damage the finish. Regularly check all screws and connections to ensure they remain tight and secure.

## 6. TROUBLESHOOTING

### 6.1 TV Does Not Fit

If your TV does not fit the stand, please re-verify all compatibility requirements listed in Section 3.2 and 3.3, including TV weight, size, screw hole pattern (VESA), and the distance from the display to the screw holes. Ensure the TV's original stand has been removed.

### 6.2 Stand Instability

Ensure all assembly screws are tightened securely. Verify that the stand is placed on a flat, stable surface. Confirm that the anti-tip parts are correctly installed and utilized.

## 7. SPECIFICATIONS



Feature	Detail
Model Number	bh-llc-tv501--wh
Dimensions (W x D x H)	Approx. 60 x 40 x 96.8-121.8 cm
Compatible TV Size	32V - 60V
Color	White
Material	Frame: Steel (powder coating)
Product Weight	Approx. 15 kg
Load Capacity (Main Unit)	Approx. 40 kg
Load Capacity (Shelf)	Approx. 5 kg
Height Adjustment	8 stages
Vertical Angle Adjustment	Yes (+7 to -10 degrees)
Movable Shelf	Yes (height adjustable)
Cord Management	Hooks included
Anti-Tip Parts	Included
VESA Compatibility (WxH mm)	200x200, 300x200, 300x300, 400x200, 400x300, 400x400
Assembly Time	Approx. 30 minutes

## 8. WARRANTY AND SUPPORT

For warranty information or product support, please contact EMOOR customer service. Details can typically be found on the product packaging or the official EMOOR website. You may also visit the EMOOR brand store on Amazon for additional information and contact options.

EMOOR Brand Store: [View EMOOR Store](#)