



Manuals.plus /

› **GODOX** /

› Godox TT685II-S Flash User Manual

GODOX TT685II-S

Godox TT685II-S Flash User Manual

Model: TT685II-S | Brand: GODOX

INTRODUCTION

The Godox TT685II-S is a versatile and powerful flash speedlite designed for Sony cameras, offering advanced features for both on-camera and off-camera lighting. This manual provides detailed instructions to help you set up, operate, and maintain your flash unit, ensuring optimal performance and creative control over your photography.

WHAT'S IN THE BOX



Figure 1: Godox TT685II-S Flash Unit and Accessories

Upon unpacking, please verify that all the following items are included:

- 1x Godox TT685II-S Flash Unit
- 1x Protective Bag
- 1x Mini Stand (H type Bracket)
- 1x Cleaning Cloth

SETUP

Battery Installation



Figure 2: Battery Compartment

The Godox TT685II-S flash unit requires 4 AA batteries for operation. For optimal performance and consistent power, it is recommended to use high-quality alkaline or Ni-MH rechargeable batteries. The unit is also compatible with the Godox PB960 power pack (sold separately) for extended shooting sessions.

1. Locate the battery compartment on the side of the flash unit.
2. Open the battery compartment cover.
3. Insert 4 AA batteries according to the polarity indicators (+/-) inside the compartment.
4. Close the battery compartment cover securely.

Mounting the Flash

Quick-release Lock

Like the other upgraded additions to the Godox TTL Flash lineup, the TT685II is designed with a quick-release lock to ensure a smooth setup, which helps you capture the next masterpiece in the critical moments.



Figure 3: Quick-Release Lock

The TT685II-S features a quick-release lock for secure and easy mounting onto your camera's hotshoe.

1. Slide the flash's hotshoe foot into your camera's hotshoe mount.
2. Push the quick-release lock lever forward until it clicks into place, securing the flash firmly.
3. To remove, push the quick-release lock lever backward and slide the flash off the hotshoe.

OPERATING MODES

Control Panel Introduction



Figure 4: Control Panel Overview

The TT685II-S offers various flash modes to suit different shooting scenarios. Use the 'MODE' button on the control panel to cycle through the available modes.

- **TTL Mode (Through-The-Lens):** This mode automatically adjusts flash output for correct exposure by measuring light through the camera's lens. It supports advanced functions like HSS (High-Speed Sync up to $1/8000s$), FEC (Flash Exposure Compensation), and Second Curtain Sync.

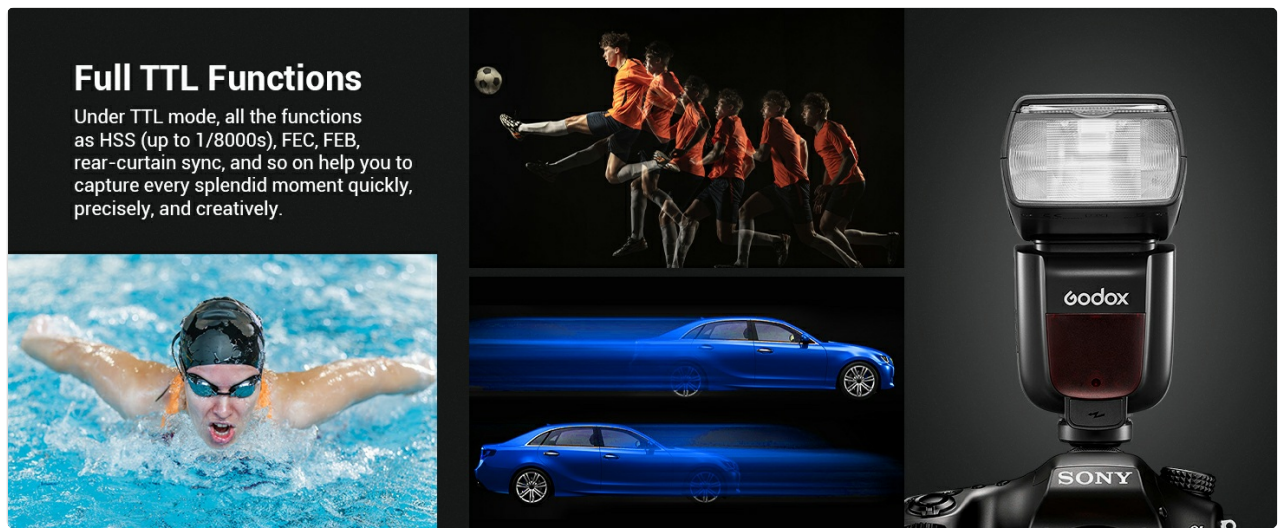


Figure 5: Full TTL Functions in Action

- **Manual Mode (M):** Provides full control over flash output, allowing you to manually set the power from 1/1 (full power) to 1/128 in 22 adjustable steps. This mode is ideal for consistent lighting in controlled environments.
- **Multi Flash Mode (Multi):** Also known as Stroboscopic Flash, this mode fires a series of rapid flashes within a single exposure, useful for capturing multiple stages of movement in one image.

WIRELESS SYSTEM

Godox 2.4G Wireless X System

The TT685II is also built-in with Godox 2.4G wireless X system to obtain seamless connectivity with compatible flashes or flash triggers.

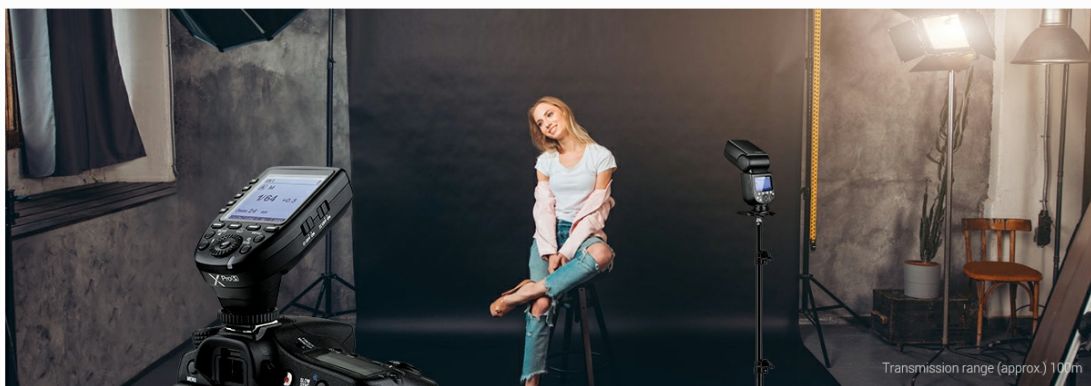


Figure 6: Godox 2.4G Wireless X System

The Godox TT685II-S is equipped with the integrated Godox 2.4G Wireless X System, enabling seamless communication with compatible Godox flashes and triggers. This system provides a wireless connection range of up to 100 meters, offering significant flexibility for your lighting setups.

Transmitter & Receiver Functionality



Figure 7: Transmitter and Receiver Setup

The TT685II-S can function as both a transmitter (master) and a receiver (slave) unit, allowing it to control or be controlled by other Godox 2.4G wireless system devices. This integration provides maximum flexibility for complex multi-flash setups.

- **As a Transmitter:** Mount the TT685II-S on your camera's hotshoe to control other Godox slave flashes wirelessly.
- **As a Receiver:** Place the TT685II-S off-camera and trigger it wirelessly using a compatible Godox 2.4G trigger (e.g., X1T-S, X2T-S, XPro-S, XProII-S, X3S, all sold separately).

The system supports 32 channels and multiple groups, ensuring a reliable shooting process without interference, even when working alongside other photographers.

FLASH HEAD ADJUSTMENT

Broader Bounce Angle

The TT685II is upgraded with a broader tilt angle from -7° to 120° , and rotatable in 330° . It gives you more flexible bounce flash angles and a much more efficient lighting setup process. By a twist of the light head, then you can get a nice bounce light you desired either on-camera or off-camera.

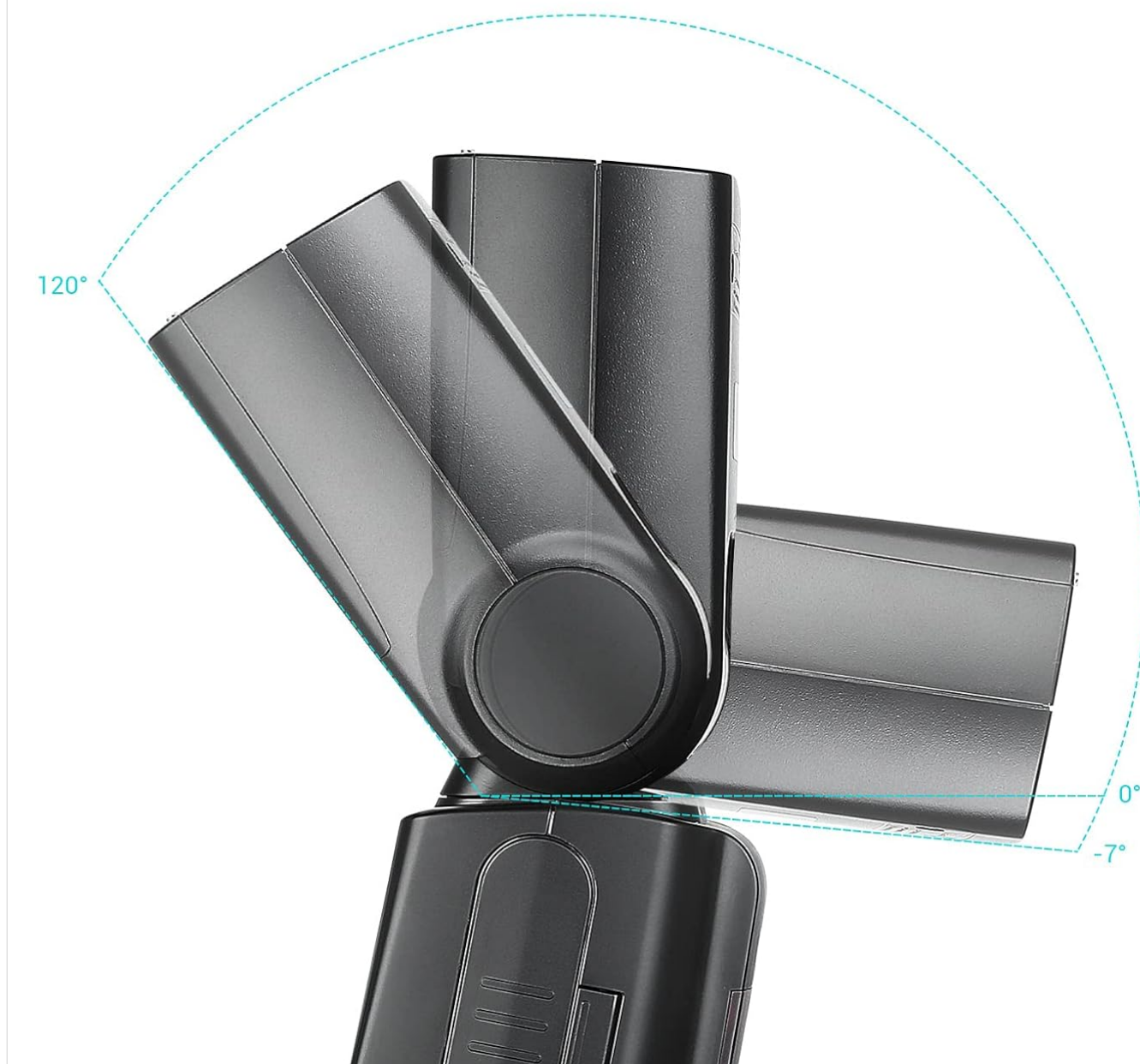


Figure 8: Adjustable Bounce Angles

The TT685II-S features an upgraded flash head with a wider tilt angle from -7° to 120° and a rotatable angle of 330° . This allows for more flexible flash bounce angles, enabling you to achieve desired lighting effects both on and off-camera by simply twisting the light head.

TCM INSTANT CONVERSION

TCM Instant Conversion

The TT685II is added with the TCM function to enhance your shooting efficiency. TCM allows for instant conversion from TTL to manual mode. At the same time, this function helps you lock the proper exposure value ensuring every fire with an accurate expression of light.



Figure 9: TCM Function Display

The TCM (TTL Convert to Manual) function is a key enhancement in the TT685II-S, designed to improve shooting efficiency. It allows for instant conversion from TTL mode to Manual mode, retaining the exposure value determined by TTL. This feature helps you quickly lock in the correct exposure, ensuring accurate light expression with every shot.

WIDE LIGHT COVERAGE

Wide Light Coverage

Combining extreme power with maximum zoom flexibility, the TT685 makes it possible for all the different lighting setups and compatible with a wide variety of lenses. With the guide number of 197' at ISO100 and a zoom range of 20-200mm, the TT685 distributes broad and even light you desired for ever shoot.



USB Update

(Type-C updating port and sync cord jack bring more convenience)

Figure 10: Flash Head and USB Port

The TT685II-S combines extreme power with maximum zoom flexibility. With a guide number of 197' (at ISO100) and a zoom range of 20-200mm, it distributes broad and even light, making it compatible with a wide variety of lenses and lighting configurations. The unit also features a Type-C USB port for firmware updates, ensuring future compatibility and feature enhancements.

MAINTENANCE

To ensure the longevity and optimal performance of your Godox TT685II-S flash unit, follow these maintenance guidelines:

- **Cleaning:** Use a soft, dry cloth to clean the flash body. For the flash tube and reflector, use a lens cleaning cloth or a soft, lint-free cloth. Avoid using harsh chemicals or abrasive materials.
- **Storage:** When not in use for extended periods, remove the batteries to prevent leakage. Store the flash unit in its protective bag in a cool, dry place, away from direct sunlight and extreme temperatures.
- **Handling:** Handle the flash unit with care. Avoid dropping it or subjecting it to strong impacts, which can damage internal components.
- **Moisture:** Keep the flash unit away from water and high humidity. If it gets wet, turn it off immediately and allow it to dry.

completely before attempting to use it again.

TROUBLESHOOTING

If you encounter issues with your Godox TT685II-S flash, refer to the following common troubleshooting steps:

Problem	Possible Cause	Solution
Flash does not fire.	Low or depleted batteries; Incorrect mode selection; Flash not securely mounted; Camera settings.	Replace batteries; Check flash mode (TTL/M/Multi); Ensure flash is fully seated and locked on hotshoe; Verify camera flash settings.
Flash output is too weak/strong.	Incorrect flash power setting (Manual mode); Incorrect FEC (TTL mode); Distance to subject.	Adjust manual power output; Adjust FEC; Move closer/further from subject.
Wireless communication issues.	Incorrect channel/group settings; Interference; Distance.	Ensure master and slave units are on the same channel and group; Reduce distance between units; Change channel to avoid interference.
Flash head does not rotate/tilt smoothly.	Obstruction or debris in the mechanism.	Check for any obstructions; Do not force movement; Contact customer support if issue persists.

If the problem persists after attempting these solutions, please contact Godox customer support for further assistance.

SPECIFICATIONS

Feature	Detail
Model	TT685II-S
Guide Number	GN60 (m ISO 100, @200mm)
Flash Coverage	20 to 200mm (14mm with wide panel)
Auto/Manual Zoom	Supported
Bounce Flash	-7° to 120° (vertical), 0° to 330° (horizontal)
Flash Duration	1/300 to 1/20000 seconds
Exposure Control System	TTL Autoflash, Manual Flash, Multi Flash
Flash Exposure Compensation (FEC)	±3 stops in 1/3 stop increments
Sync Mode	High-Speed Sync (HSS up to 1/8000s), First-Curtain Sync, Second-Curtain Sync
Wireless Flash	2.4G Wireless X System (Master/Slave)
Wireless Range	Approx. 100 meters
Channels	32 (1-32)
Groups	A, B, C, D, E (5 groups)
Power Source	4x AA batteries (Alkaline or Ni-MH recommended)
Recycle Time	Approx. 0.1-2.6 seconds (with Ni-MH batteries)
Full Power Flashes	Approx. 330 (with Ni-MH batteries)
Dimensions (W x H x D)	7.5 x 3 x 7.5 inches (approximate)
Weight	1.26 pounds (without batteries)
Firmware Upgrade	Type-C USB Port

WARRANTY & SUPPORT

For detailed warranty information and technical support, please refer to the official Godox website or the documentation provided with your purchase. You can also download the full user manual in PDF format for more in-depth information:

[Download User Manual \(PDF\)](#)

For any further inquiries or assistance, please contact Godox customer service.