

Surfola SF530

Surfola SF530 Action Camera User Manual

Model: SF530

INTRODUCTION

Thank you for choosing the Surfola SF530 Action Camera. This manual provides essential information for setting up, operating, and maintaining your device. Please read it carefully before use to ensure optimal performance and longevity of your camera.



Figure 1: Surfola SF530 Action Camera and included accessories.

WHAT'S IN THE BOX

- Surfola SF530 Action Camera
- Waterproof Case
- Dust Back Cover
- Frame Mount
- Wireless Remote Control
- Wireless Microphone
- Rechargeable Batteries (x2)

- Battery Charger
- Micro USB Cable
- Bicycle Handlebar Holder Mount
- Adjustable Pivot Arms (x2)
- Strap Buckles (x2)
- Flat Mounts (x2)
- Wrist Strap
- Screws



Figure 2: All components included in the Surfola SF530 package.

SETUP

1. Battery Installation

1. Open the battery compartment cover on the bottom of the camera.

2. Insert the rechargeable battery, ensuring the correct orientation.
3. Close the battery compartment cover securely.

2. Charging the Batteries

Use the provided battery charger to charge the two included batteries. The charger allows simultaneous charging of both batteries.



Figure 3: Battery charger with two batteries inserted.

3. Micro SD Card Installation

The camera does not include a Micro SD card. It is recommended to use a 32G-128G U3 Micro SD card for optimal performance. 256G Micro SD cards are not supported.

1. Locate the Micro SD card slot on the side of the camera.
2. Insert the Micro SD card until it clicks into place.
3. To remove, gently push the card until it pops out.

4. Powering On/Off

Press and hold the Power/Mode button on the top of the camera to turn it on or off.

OPERATING THE CAMERA

1. Dual & Touch Screen Operation

The SF530 features both a rear HD LCD touch screen and a front HD LCD display. The touch screen allows for intuitive navigation and settings adjustments.



Figure 4: Demonstrating the dual screen and touch screen interface.

2. Video Recording & Photo Capture

The camera supports 4K 60fps video recording and 24MP photo capture. Use the mode button to switch between video and photo modes, and the shutter button to start/stop recording or take a photo.

3. 8X Zoom Functionality

Utilize the 8X digital zoom to get closer to your subject. This feature is accessible through the camera's menu or dedicated buttons.

4. Electronic Image Stabilization (EIS)

The SF530 features 6-axis gyroscopic electronic stabilization to ensure smooth and steady footage, especially during high-speed activities. Note that EIS may not function at 4K 60fps resolution.



Figure 5: Visual comparison of footage with and without EIS enabled.

Video 1: Demonstration of Surfola's Super Anti-shake (EIS) feature in action.

5. Professional Functions

The SF530 includes various shooting modes:

- **Time-lapse:** Capture changes over time by taking photos at set intervals.
- **Burst Photo:** Capture multiple photos in quick succession for fast-moving subjects.
- **Slow Motion:** Record high-speed action that can be played back slowly.
- **Loop Recording:** Continuously record video, overwriting older footage when the memory card is full.

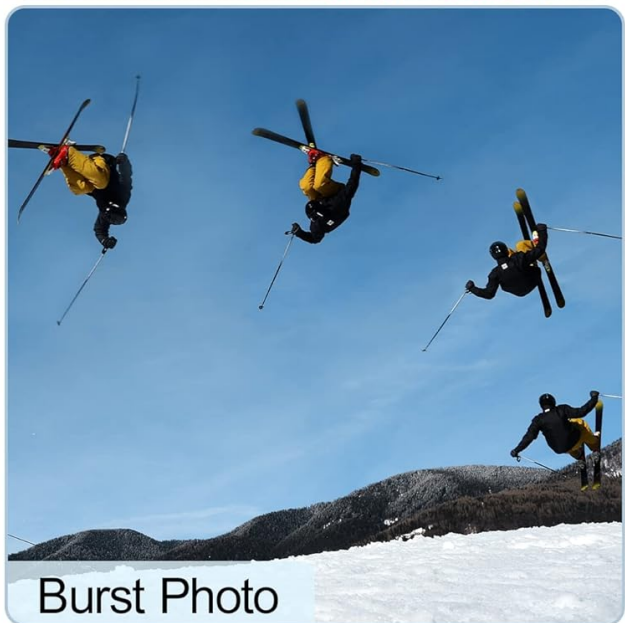
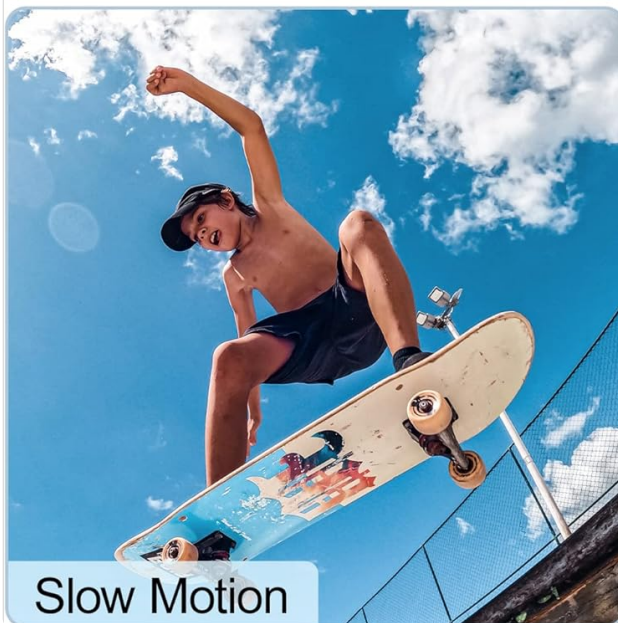
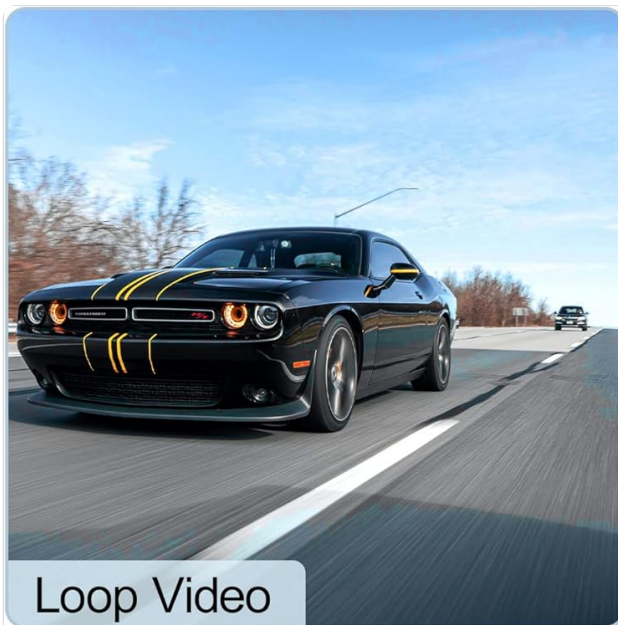


Figure 6: Examples of different professional shooting modes available on the camera.

CONNECTIVITY

1. Wireless Connection (IBK CAM App)

The IBK CAM app allows you to wirelessly transmit, edit, and download videos and pictures. You can also control the camera remotely from your smartphone.



Figure 7: Wireless connection and sharing via the IBK CAM app.

Video 2: Instructions for WiFi connection on Android devices.

Video 3: Instructions for WiFi connection on iOS devices.

2. USB & HDMI

The camera supports USB and HDMI connectivity for data transfer and display on external screens. Using the USB cable for data transfer is faster than 2.4G WiFi.

ACCESSORIES USAGE

1. Wireless Remote Control

The included wireless remote control allows you to start/stop recording or take photos from a distance. The remote control is not waterproof.

2. Wireless Microphone

Attach the wireless microphone to the camera for enhanced audio recording. The wireless microphone is not waterproof.



Figure 8: Wireless microphone connected to the camera while charging.

3. Waterproof Case

The waterproof case allows the Surfola SF530 to be used underwater up to 40 meters (131 feet). Ensure the case is properly sealed before submerging.



Figure 9: The camera in its waterproof case, suitable for underwater use.

Video 4: Detailed instructions on how to use various Surfola Action Camera accessories.

MAINTENANCE

- Keep the camera and accessories clean and dry.
- Avoid extreme temperatures and direct sunlight.
- Do not expose the camera directly to water without the waterproof case.
- Use a qualified 5V 1A / 5V 2A power adapter for charging to prevent damage.

TROUBLESHOOTING

- **Camera not turning on:** Ensure batteries are charged and correctly inserted.
- **Video/Picture quality issues:** Viewing on a phone/computer often provides better quality than on the camera screen. Ensure sufficient lighting.
- **WiFi connection issues:** Ensure the camera's WiFi is enabled and you are connecting to the correct network. Try restarting your phone/camera.
- **Microphone not working:** Ensure the external microphone is securely connected.

SPECIFICATIONS

Feature	Specification
Brand	Surfola
Model Number	SF530
Video Resolution	4K 60fps
Photo Resolution	24MP
Waterproof Depth	Up to 40M (with waterproof case)
Zoom	8X Digital Zoom
Stabilization	6-axis Gyroscopic EIS
Screen Size	2 Inches (Rear Touch Screen), 1.3 Inches (Front Display)
Connectivity	Wi-Fi, USB, HDMI
Flash Memory Type	Micro SD (U3, 32G-128G recommended)
Item Weight	1.41 ounces
Product Dimensions	2.36 x 1.65 x 1.18 inches



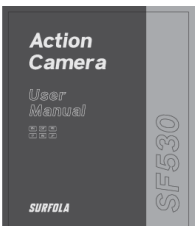


WARRANTY & SUPPORT

Surfola offers comprehensive support for your SF530 Action Camera:

- **30-Day Refund:** If you are not satisfied with your purchase.
- **365-Day Replacement:** For any manufacturing defects.
- **24-Hour Troubleshooting:** Dedicated support for technical issues.
- **Lifetime Support:** Ongoing assistance for the product's lifespan.

For warranty claims or support, please contact:support.ac@surfola.co

Related Documents - SF530

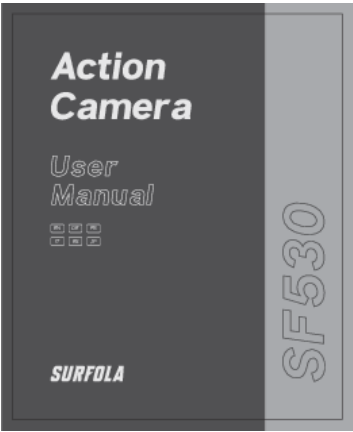
	<p>Surfola Action Camera FAQ: Package Contents, SD Cards, WiFi, and Warranty Information</p> <p>Find answers to frequently asked questions about Surfola action cameras, including package contents, supported Micro SD cards, WiFi app connection, camera temperature, recommended accessories, and warranty details.</p>
	<p>Surfola SF430 Action Camera User Manual</p> <p>Comprehensive user manual for the Surfola SF430 Action Camera, detailing its features like 4K/60FPS video, 20MP photos, EIS stabilization, touchscreen interface, WiFi connectivity, underwater capabilities, and included accessories for outdoor and action recording.</p>
	<p>Surfola SF430 Action Camera User Manual</p> <p>A comprehensive guide to operating the Surfola SF430 action camera, covering setup, features, specifications, and important safety precautions. Learn how to prepare your TF card, power the device on/off, switch modes, record video, take photos, use remote control, and connect via Wi-Fi.</p>
	<p>Surfola SF530 Action Camera User Manual & Guide</p> <p>Comprehensive user manual for the Surfola SF530 action camera. Learn about specifications, operation, settings, Wi-Fi connectivity, and accessories. Available in English, German, French, Italian, Spanish, Japanese, and more.</p>
	<p>Surfola Action Camera FAQ and Support Information</p> <p>Frequently asked questions, warranty information, and accessory recommendations for Surfola action cameras, including setup guides and troubleshooting tips.</p>
	<p>SURFOLA Action Camera Wi-Fi Connection Guide</p> <p>This guide provides instructions for connecting your SURFOLA Action Camera to a mobile phone via Wi-Fi using the iSmart DV2 application, covering app download, permissions, and connection steps.</p>



[Surfola Action Camera FAQ: Package Contents, SD Cards, WiFi, and Warranty Information](#)

Find answers to frequently asked questions about Surfola action cameras, including package contents, supported Micro SD cards, WiFi app connection, camera temperature, recommended accessories, and warranty details.

lang:en score:36 filesize: 115.38 K page_count: 2 document date: 2022-11-15



[Surfola SF530 Action Camera User Manual & Guide](#)

Comprehensive user manual for the Surfola SF530 action camera. Learn about specifications, operation, settings, Wi-Fi connectivity, and accessories. Available in English, German, French, Italian, Spanish, Japanese, and more.

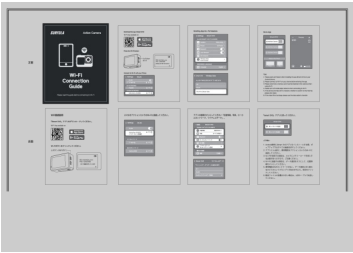
lang:en score:35 filesize: 2.35 M page_count: 47 document date: 0000-00-00



[Surfola Action Camera FAQ and Support Information](#)

Frequently asked questions, warranty information, and accessory recommendations for Surfola action cameras, including setup guides and troubleshooting tips.

lang:en score:25 filesize: 115.12 K page_count: 2 document date: 2022-11-15



[SURFOLA Action Camera Wi-Fi Connection Guide](#)

This guide provides instructions for connecting your SURFOLA Action Camera to a mobile phone via Wi-Fi using the iSmart DV2 application, covering app download, permissions, and connection steps.

lang:en score:20 filesize: 526.34 K page_count: 1 document date: 2022-09-15



[\[pdf\]](#)

Surfola SF530 Pro V2 0 2 2023 7 Page 1 3 4 5 6 8 9 10 11 12 13 14 15 C1S4b3alo2L m media

amazon images I |||

1 2 3 4 5 6 7 8 9 10 11 12 13 14 Version 2.0 ...

lang:en **score:12** filesize: 5.92 M page_count: 21 document date: 2023-07-07