



Manuals.plus /

› Nekteck /

› Nekteck Shiatsu Neck and Back Massager and Electric Kneading Foot Massager Machine User Manual

Nekteck B09L477QH4

Nekteck Shiatsu Neck and Back Massager and Electric Kneading Foot Massager Machine User Manual

Model: B09L477QH4

1. IMPORTANT SAFETY INSTRUCTIONS

Please read all instructions carefully before using the Nekteck Shiatsu Neck and Back Massager and Electric Kneading Foot Massager Machine. Failure to follow these instructions may result in injury or damage to the product.

- Do not use if you have sensitive skin, open wounds, or circulatory issues.
- Consult a doctor before use if pregnant or have existing medical conditions.
- Do not use for more than 15 minutes at a time due to the automatic shut-off feature.
- Keep the device away from water and moisture.
- Unplug the device from the power outlet when not in use.
- Do not use the massager while sleeping.
- Statements regarding dietary supplements have not been evaluated by the FDA and are not intended to diagnose, treat, cure, or prevent any disease or health condition.

2. PRODUCT OVERVIEW

The Nekteck Shiatsu Neck and Back Massager and Electric Kneading Foot Massager Machine is designed to provide targeted massage and relaxation. This product includes two distinct massager units: a versatile neck and back massager and a dedicated electric foot massager.

Neck and Back Massager Features:

- **8 Deep-Shiatsu Kneading Massage Nodes:** Designed to alleviate muscle soreness and stiffness.
- **Infrared Soothing Heat Function:** Improves blood circulation; can be manually turned on/off.
- **15-Minute Auto-Shut Off:** Safety feature to prevent overheating.
- **3 Speed Strength Levels:** Adjustable intensity for personalized massage.

- **Long Handle Straps:** Allows adjustment of massage position and pressure.

Electric Kneading Foot Massager Features:

- **6 Massage Heads with 18 Rotating Nodes:** Provides deep muscle penetration.
- **Heating Function:** Helps relax fatigued muscles and improve foot wellness.
- **Bi-Directional Shiatsu Massage:** Offers a comprehensive massage experience.
- **Easy Operation:** Simple controls for user convenience.
- **Adjustable Height:** 3 levels for customized comfort.

3. SETUP

Unpacking:

1. Carefully remove all components from the packaging.
2. Verify that all parts are present: Neck and Back Massager unit, Electric Kneading Foot Massager unit, and Power Adapter.
3. Retain packaging for future storage or transport.

Connecting Power:

- Ensure the massager is placed on a stable, flat surface.
- Connect the power adapter cable securely to the massager unit.
- Plug the power adapter into a standard electrical outlet.

Adjusting Foot Massager Height:

- The foot massager features adjustable feet. Rotate the feet to achieve one of the three available height levels for optimal comfort.

ERGONOMIC DESIGN



Figure 3.1: The foot massager's ergonomic design allows for a 15-degree incline by adjusting its feet, providing comfortable positioning.

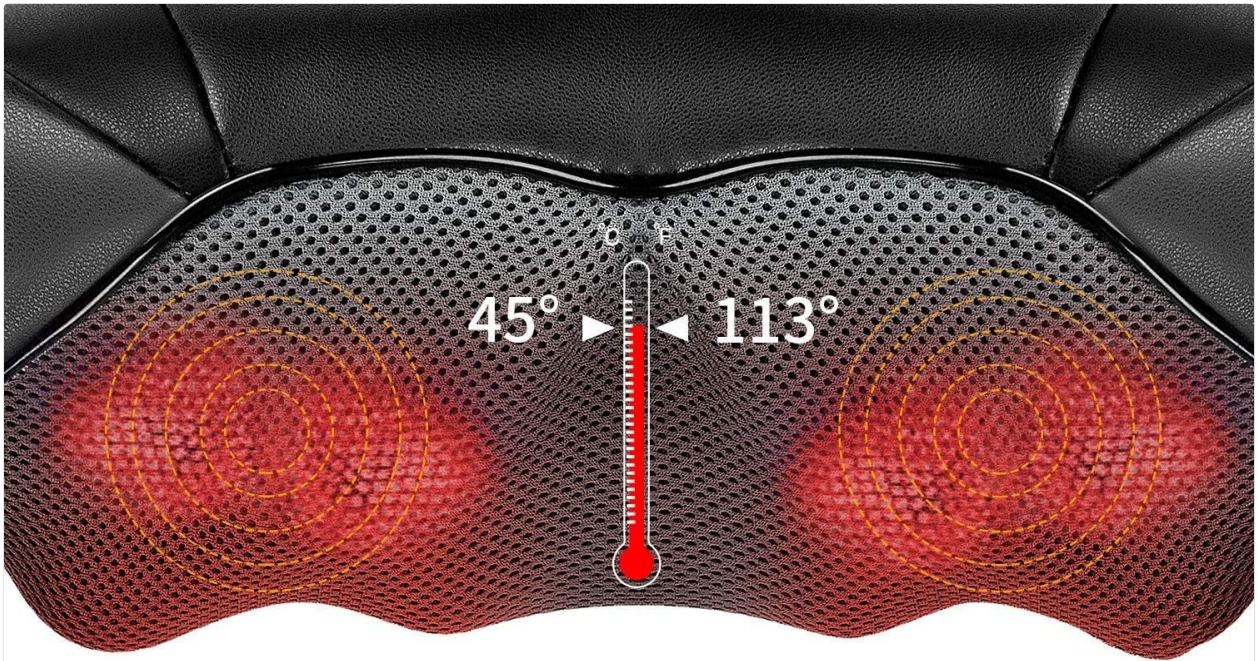
4. OPERATING INSTRUCTIONS

4.1 Operating the Neck and Back Massager

1. **Placement:** Position the massager on your neck, shoulders, back, waist, or legs as desired. Use the long handle straps to adjust the position and apply gentle pressure.
2. **Power ON/OFF:** Press the **Power button** to turn the massager on. Press again to turn it off.
3. **Direction Control:** Press the **Direction button** to change the rotation direction of the massage nodes (clockwise or counter-clockwise).
4. **Speed Level:** Press the **Speed Level button** to cycle through 3 different massage intensity levels (low, medium, high).
5. **Heat Function:** Press the **Heat ON/OFF button** to activate or deactivate the infrared soothing heat function. The heat will reach up to 113°F (45°C).
6. **Automatic Shut-off:** The massager will automatically turn off after 15 minutes of continuous use to prevent overheating. You can restart it if desired after a brief pause.



Figure 4.1: Control panel for the Nekteck Neck and Back Massager, showing buttons for Power ON/OFF, Direction, Speed Level, and Heat ON/OFF.



ADVANCED HEATING FUNCTION FOR RELAXATION

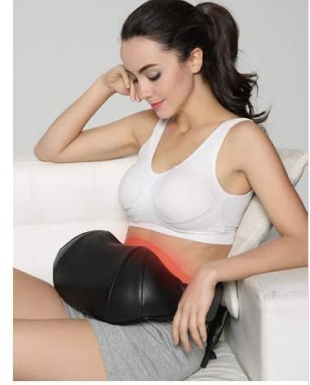
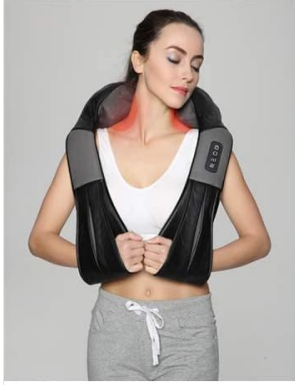
The highest temperature up to 113° F(45° C)
15 Minutes auto-shutoff overheat protection



Figure 4.2: Illustration of the advanced heating function, indicating a maximum temperature of 113°F (45°C) and a 15-minute auto-shutoff for safety.

ENJOY THE FULL BODY MASSAGE

Versatile design allows focusing on a target area



Office & Desk Work



Back Pain



Sore Muscles

**BEST
USED
FOR**



Stress Relief

Figure 4.3: Examples of how the versatile neck and back massager can be applied to various body parts, including the neck, upper back, lower back, and legs.

4.2 Operating the Electric Kneading Foot Massager

1. **Placement:** Place your feet on the massage nodes.
2. **Power ON/OFF and Mode Selection:** The foot massager is operated by a single toe-touch button.
 - **First Press:** Turns on the massager with Shiatsu kneading.
 - **Second Press:** Activates Shiatsu kneading with soothing heat.
 - **Third Press:** Turns the massager off.
- **Bi-Directional Massage:** The massage nodes will automatically change direction during the massage cycle.
- **Heating Function:** The heating function provides gentle warmth to enhance relaxation.

BI-DIRECTION SHIATSU MASSAGE-GET REAL MASSAGE EXPERIENCE



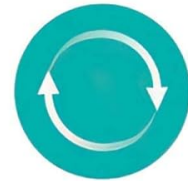
6 Massage Heads



18 Massage Nodes



Gentle Heating



Bi-Directional Massage

Figure 4.4: Close-up of the foot massager's surface, highlighting its 6 massage heads, 18 rotating nodes, gentle heating capability, and bi-directional massage function.

EASY TO ACCESS POWER BUTTON



TOE TOUCH WITHOUT BENDING DOWN

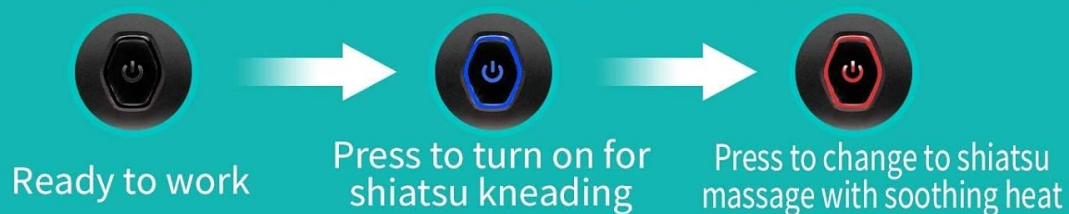


Figure 4.5: Demonstrates the easy-to-access power button on the foot massager, allowing users to turn it on, activate heat, and turn it off with a simple toe touch.

5. MAINTENANCE

Cleaning:

- Always unplug the massager from the power outlet before cleaning.
- Wipe the surface of the massager with a soft, damp cloth. Do not use abrasive cleaners or harsh chemicals.
- Ensure no liquid enters the device.
- Allow the massager to dry completely before storing or next use.

Storage:

- Store the massager in a cool, dry place, away from direct sunlight and extreme temperatures.
- Avoid placing heavy objects on the massager.
- Keep the power cord neatly coiled to prevent damage.

6. TROUBLESHOOTING

- **Massager does not turn on:**

- Ensure the power adapter is securely connected to both the massager and a working electrical outlet.
- Check if the power outlet is functional by plugging in another device.

- **Heat function is not working:**

- For the neck/back massager, ensure the heat button is pressed.
- For the foot massager, press the power button twice to activate heat mode.
- Allow a few minutes for the heat to become noticeable.

- **Massage nodes stop rotating:**

- The massager has a 15-minute auto-shutoff feature. If it has been running for this duration, it will turn off automatically. Restart the device.
- Ensure there is no obstruction preventing the nodes from rotating freely.

- **Unusual noise or smell:**

- Immediately turn off and unplug the massager. Contact customer support for assistance.

7. SPECIFICATIONS

Feature	Description
Model Number	B09L477QH4
Brand	Nekteck
Power Source	Corded Electric
Target Use Body Part	Neck, Back, Shoulders, Waist, Legs, Feet
Special Features	Heat Function, Auto-Shutoff (15 min)
Massage Technique	Shiatsu
Water Resistance Level	Not Water Resistant
Cordless	No
Color	Black
Material Type	Potentially Stainless Steel, Metal, Brass, or Zinc

8. WARRANTY AND SUPPORT

For warranty information or technical support, please refer to the documentation included with your purchase or visit the official Nekteck website. Keep your purchase receipt as proof of purchase for any warranty claims.

For further assistance, you may contact Nekteck customer service through their official channels.

