



XSSX-8PB

Instruction Manual

Deal4GO 8-Pack Plastic ABXY Buttons Menu View Share Keys Set Replacement for Xbox Series S & Xbox Series X Controller (Blue)

PRODUCT OVERVIEW

This instruction manual provides guidance for the installation and use of the Deal4GO 8-Pack Plastic ABXY Buttons, Menu, View, and Share Keys Set, designed as a replacement for Xbox Series S and Xbox Series X controllers.



Image: The complete set of blue replacement buttons for Xbox Series S and X controllers. This includes the A, B, X, Y buttons, the Xbox Guide button, and the Menu, View, and Share buttons, all in a vibrant blue color.

Package Contents:

- 1x A button
- 1x B button
- 1x X button
- 1x Y button
- 1x Xbox Guide button
- 1x Share button
- 1x Menu button
- 1x View button

This 8-pack includes all necessary buttons for a full replacement of the face buttons on compatible Xbox Series S and X controllers.

COMPATIBILITY

These replacement buttons are compatible with **ALL VERSIONS** of the Xbox Series S and Xbox Series X

controllers.

Important Note: These buttons are **NOT** compatible with Xbox One Elite, Xbox One S, or Xbox One X controllers.

SETUP AND INSTALLATION

Replacing the buttons requires opening the controller. This process is considered to be of **medium technical difficulty**. Please proceed with caution and ensure you have the necessary tools.

Required Tools (Not Included):

- T8 Torx screwdriver
- Prying tool (plastic spudger recommended to avoid damage)

Installation Steps:

1. **Prepare Your Workspace:** Ensure you have a clean, well-lit area.
2. **Remove Controller Battery:** Disconnect the battery pack or remove AA batteries from the controller.
3. **Disassemble Controller:** Using the T8 Torx screwdriver, carefully remove the screws holding the controller casing together. Use a prying tool to gently separate the front and back shells. Refer to online guides or videos for specific controller disassembly instructions if needed.
4. **Locate and Remove Old Buttons:** Once the controller is open, carefully identify and remove the existing ABXY, Menu, View, Share, and Xbox Guide buttons. Note their orientation.
5. **Install New Buttons:** Place the new blue replacement buttons into their respective slots. Ensure they sit flush and move freely.
6. **Reassemble Controller:** Carefully align the controller shells and secure them with the screws. Do not overtighten.
7. **Test Functionality:** Reinsert the battery and test all buttons to ensure they register correctly.



Image: A side view of the replacement button set, highlighting the distinct shapes and sizes of the ABXY buttons alongside the smaller Menu, View, and Share buttons.

OPERATING INSTRUCTIONS

Once installed, these replacement buttons function identically to the original buttons on your Xbox Series S or Xbox Series X controller. No special configuration or software is required.

- **ABXY Buttons:** Used for primary in-game actions and menu navigation.
- **Xbox Guide Button:** Opens the Xbox Guide, providing access to friends, parties, settings, and more.
- **Menu Button:** Typically opens in-game menus or context-sensitive options.
- **View Button:** Often used to change camera views, access maps, or display additional information in games.
- **Share Button:** Captures screenshots and game clips.

MAINTENANCE

These plastic buttons require minimal maintenance. To ensure longevity and proper function:

- **Cleaning:** If buttons become sticky or unresponsive due to dirt or debris, gently clean around the

button edges with a cotton swab lightly dampened with isopropyl alcohol. Ensure the controller is powered off and batteries are removed before cleaning.

- **Avoid Excessive Force:** Do not press buttons with excessive force, as this can lead to premature wear or damage to the internal mechanisms.
- **Storage:** Store your controller in a clean, dry environment away from extreme temperatures.

TROUBLESHOOTING

If you encounter issues after installing the replacement buttons, consider the following troubleshooting steps:

| Problem | Possible Cause | Solution |
|---|--|--|
| Button is sticky or unresponsive | Debris under the button; incorrect seating | Clean around the button with isopropyl alcohol. If issue persists, re-open controller and re-seat the button, ensuring no obstructions. |
| Button does not register input | Button not properly seated; internal controller issue | Re-open controller and verify the button is correctly installed and making contact with the internal switch. Ensure no damage to the controller's circuit board. |
| Controller not functioning after reassembly | Loose connections; damaged ribbon cable; battery issue | Double-check all internal connections. Ensure the battery is properly inserted and charged. If damage is suspected, professional repair may be required. |

SPECIFICATIONS

- **Product Name:** Deal4GO 8-Pack Plastic ABXY Buttons Menu View Share Keys Set
- **Model Number:** XSSX-8PB
- **Color:** Blue
- **Material:** Plastic
- **Compatibility:** Xbox Series S & Xbox Series X Controllers (All Versions)
- **Incompatible With:** Xbox One Elite, Xbox One S, Xbox One X Controllers
- **Dimensions (approximate, individual button):** 0.91 x 0.39 x 0.39 inches (per button, varies slightly)
- **Total Weight (set):** Approximately 0.352 ounces
- **Manufacturer:** Generic
- **First Available:** August 2, 2020

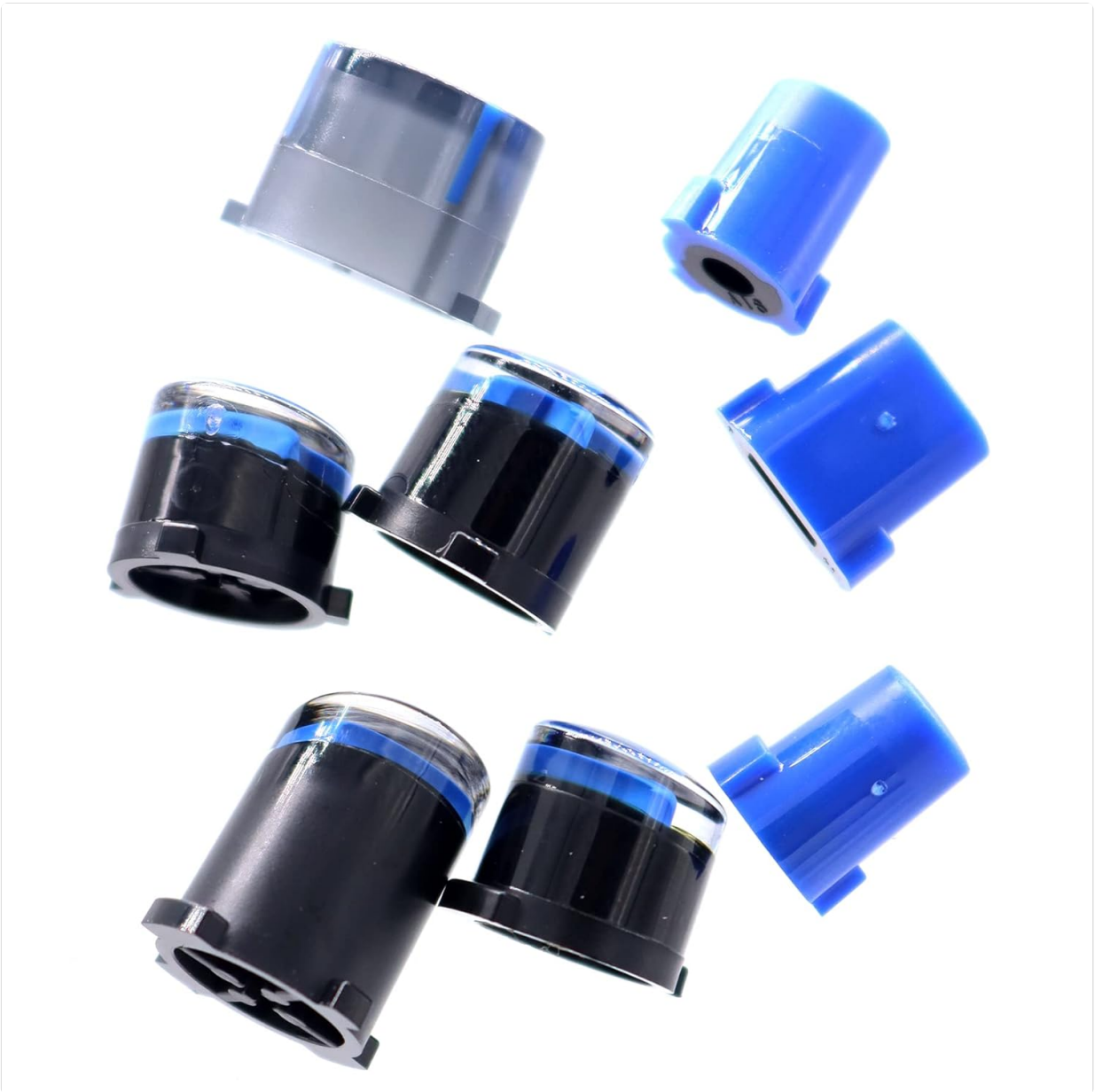


Image: The underside of the replacement buttons, illustrating the design and mounting points that connect them to the controller's internal mechanisms.

WARRANTY AND SUPPORT

As a generic brand product, specific warranty information may vary. Please refer to the retailer or point of purchase for details regarding return policies or any available warranty.

For technical support or further assistance with installation, it is recommended to consult online resources such as video tutorials or community forums dedicated to Xbox controller modifications. The manufacturer does not provide direct technical support for installation procedures.