

KIMILAR TT1103-2

KIMILAR Anti-Theft Video Doorbell Mount Instruction Manual

Model: TT1103-2

INTRODUCTION

Thank you for choosing the KIMILAR Anti-Theft Video Doorbell Mount. This product is designed to provide a secure and drill-free mounting solution for your Ring or Blink wireless video doorbell. It offers enhanced protection against theft and is ideal for apartments, rental homes, businesses, and other locations where drilling into the door frame is not desired or permitted. Please read this manual carefully before installation and use to ensure proper functionality and safety.

PRODUCT OVERVIEW

The KIMILAR Anti-Theft Video Doorbell Mount is constructed from durable aluminum and ABS materials, ensuring longevity and robust protection for your video doorbell. Its innovative design allows for easy, non-invasive installation on most inward-opening doors.

Key Features:

- **Anti-theft Design:** Securely encases your video doorbell, preventing unauthorized removal.
- **No Drilling Required:** Installs without permanent modifications to your door or frame.
- **Adjustable Fit:** Accommodates various door thicknesses and allows for horizontal adjustment of the doorbell position.
- **Wide Compatibility:** Designed for Ring Video Doorbell (1-4 generation), Ring Battery Doorbell (2024 Release), Battery Doorbell Plus (2023 Release), and Blink Video Doorbell.
- **Durable Construction:** Made from high-quality aluminum and ABS for long-lasting use.

Package Contents:

- 1 x KIMILAR Anti-Theft Video Doorbell Mount
- Installation Guide
- Necessary Screws and Tools (e.g., screwdriver, foam pieces)



Image: The KIMILAR Anti-Theft Video Doorbell Mount, showcasing its sleek black design and the secure enclosure for a video doorbell.

COMPATIBILITY

Compatible Doorbells:

The mount is compatible with the following video doorbell models:

- Ring Video Doorbell (1st, 2nd, 3rd, 4th Generation)

- Ring Video Doorbell (2nd Generation - 2020 Release)
- Ring Battery Doorbell (2024 Release)
- Ring Battery Doorbell Plus (2023 Release)
- Blink Video Doorbell

The maximum size of the doorbell that can be placed inside the mount is **2.55 inches Wide x 5.11 inches High x 1.14 inches Depth**. Please ensure your doorbell fits within these dimensions. *(Doorbell is Not Included in Package)*

Compatible With Most Video Doorbells

Maximum size of Video Doorbell:

2.55inch Wide X **5.11inch**
Tall X **1.14inch** Thick



Applicable Model



Image: A visual guide showing various compatible Ring and Blink video doorbell models that fit the KIMILAR mount.

Compatible Doors:

This mount is suitable for most doors with a thickness between **0.6 inches and 2.3 inches**. The door must open **inward**, and can open either left or right. It is crucial to measure your door thickness before ordering.

Note: This product is NOT suitable for security doors.

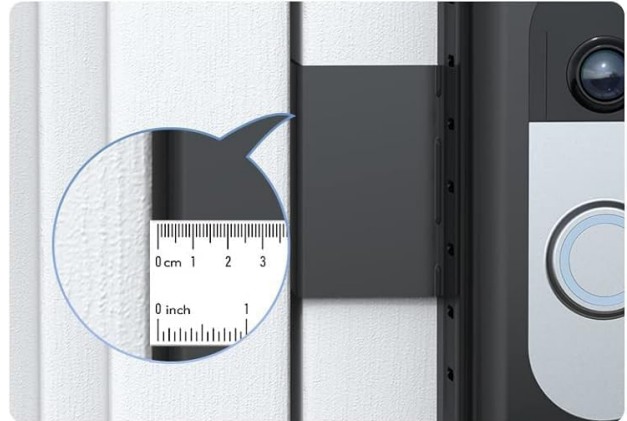
What Kinds of Door Can Be Used

Applicable Door Thickness: 0.59inch-2.36inch

Door Gap Width > 0.06inch



Applicable Door Thickness: 0.59inch-2.36inch



Door Gap Width > 0.06inch

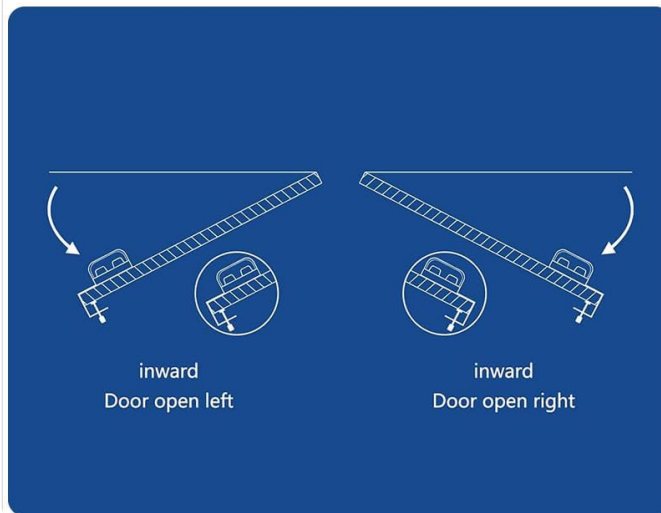


Image: Illustrations demonstrating how to measure door thickness and door gap width for compatibility, along with diagrams for inward-opening left and right doors.

SETUP AND INSTALLATION

The KIMILAR Anti-Theft Video Doorbell Mount is designed for quick and easy installation without the need for drilling. Follow these steps for a secure setup:

1. **Prepare Your Doorbell:** Ensure your video doorbell is fully charged or has fresh batteries, as it will be enclosed within the mount.
2. **Insert Doorbell into Mount:** Carefully place your video doorbell into the designated slot within the KIMILAR mount. Ensure it sits snugly and the camera lens and button are aligned with the openings.
3. **Adjust Fixed Clip:** The mount features an adjustable fixed clip. Loosen the adjustment screw and slide the clip to match your door's thickness. This ensures a tight and secure fit on the door.
4. **Position on Door:** Place the mount over the edge of your door, ensuring the main body of the mount is on the exterior side and the adjustable clip is on the interior side.

5. **Secure the Mount:** Tighten the adjustment screw to firmly secure the mount to your door. The mount should not wobble or slide.
6. **Adjust Doorbell Distance (Optional):** The KIMILAR mount allows you to adjust the distance of the doorbell from the door edge by sliding it horizontally within the mount. Adjust as needed for optimal camera view.
7. **Test Door Operation:** Gently open and close your door to ensure the mount does not interfere with its movement or cause any scraping.

CAN BE ADJUSTED LEFT AND RIGHT

The distance to door edge can be adjusted



Image: A visual representation highlighting the "No Drilling Needed" feature, showing the mount protecting the doorbell from dust and rainfall, and emphasizing its anti-theft and easy removal capabilities.

Always keep your area secure



Image: Diagrams illustrating how the doorbell's position can be adjusted left and right within the mount to optimize its viewing angle.

Installation Video:

Your browser does not support the video tag.

Video: Official KIMILAR video demonstrating the installation process of the Anti-Theft Video Doorbell Mount. This video provides a step-by-step visual guide to help users set up their mount quickly and correctly.

OPERATING INSTRUCTIONS

Once installed, the KIMILAR Anti-Theft Video Doorbell Mount operates passively, providing a secure housing for your video doorbell. The functionality of your video doorbell (e.g., motion detection, two-way audio, live view) remains unchanged and is managed through your doorbell's native application.

Ensuring Optimal Performance:

- **Clear Line of Sight:** Ensure the mount does not obstruct the doorbell's camera lens or motion sensors.

The design is intended to provide a clear field of view.

- **Door Movement:** Confirm that the door opens and closes freely without resistance from the mount. Adjust the mount's position or tightness if necessary.
- **Battery Access:** For battery-powered doorbells, you will need to remove the mount from the door to access the doorbell for charging or battery replacement. This is done by loosening the security screw.



ALL AROUND PROTECTION

Protect your doorbell away from dust, rainfall



NO DRILLING NEEDED

Install with screwdrivers (which comes with package) in seconds



ANTI-THEFT

Doorbell cannot be taken away from outside



EASY REMOVAL

What you need is to remove 1 security screw

NO DAMAGE TO YOUR HOUSE



Image: The KIMILAR doorbell mount securely installed on a door, demonstrating its unobtrusive presence and how it allows the doorbell to function normally.

MAINTENANCE

The KIMILAR Anti-Theft Video Doorbell Mount requires minimal maintenance to ensure its longevity and continued protection for your doorbell.

- **Regular Cleaning:** Wipe the mount periodically with a soft, damp cloth to remove dust, dirt, or smudges.

Avoid abrasive cleaners or solvents that could damage the finish.

- **Check Tightness:** Occasionally check the tightness of the adjustment screw to ensure the mount remains securely fastened to the door.
- **Inspect for Damage:** Periodically inspect the mount for any signs of wear, cracks, or damage. If any damage is observed, consider replacing the unit to maintain optimal security.
- **Weather Protection:** While the mount offers some protection from dust and rainfall, it is not fully waterproof. Ensure your video doorbell itself is rated for outdoor use if exposed to direct weather.

TROUBLESHOOTING

Problem	Possible Cause	Solution
Mount does not fit on door.	Door thickness exceeds compatible range (0.6-2.3 inches). Door opens outward.	Verify your door's thickness and opening direction. This mount is only for inward-opening doors within the specified thickness.
Doorbell camera view is obstructed.	Doorbell not positioned correctly within the mount. Mount is too close to the door frame.	Adjust the doorbell's position within the mount. Utilize the horizontal adjustment feature of the mount to move it away from the door frame.
Door does not close properly with mount installed.	Mount is too thick for the door gap. Mount is not installed flush.	Ensure the mount is fully seated on the door edge. Check if the door gap is sufficient (typically >0.06 inches). This mount is not suitable for all door types, especially those with very tight clearances.
Doorbell feels loose inside the mount.	Doorbell dimensions are smaller than the mount's internal space.	Use the provided foam pieces or similar padding to fill any gaps and secure the doorbell snugly within the mount.

SPECIFICATIONS

Model Name:	TT1103-2 (TYZJ03)
Brand:	KIMILAR
Material:	Aluminum, Acrylonitrile Butadiene Styrene (ABS)
Color:	Black
Mounting Type:	Door Mount

Compatible Devices:	Ring/Blink Wireless Video Doorbells (max 2.55" W x 5.11" H x 1.14" D)
Compatible Door Thickness:	0.6 inches to 2.3 inches
Installation Type:	Install on the door (no drilling)
Special Feature:	Anti-theft doorbell mount, does not block motion sensor
Item Weight:	11.1 ounces
Package Dimensions:	5.87 x 3.27 x 3.19 inches
UPC:	616985033553



WARRANTY AND SUPPORT

KIMILAR stands behind the quality of its products. While specific warranty details are not provided in the product information, for any reason, if you are not completely satisfied with your KIMILAR Doorbell Mount, please do not hesitate to contact us via the "Contact Seller" entrance on Amazon.

For further assistance or inquiries, please refer to the contact information provided with your purchase or visit the official KIMILAR store on Amazon:

[Visit the KIMILAR Store on Amazon](#)

Related Documents - TT1103-2

	<p>Satisure Anti-Theft Doorbell Mount: Installation Guide</p> <p>Comprehensive guide for installing the Satisure Anti-Theft Doorbell Mount using both no-drill and drilling methods. Compatible with major video doorbell brands like Ring and Blink.</p>
	<p>DZEES Smart Battery Video Doorbell DB1 Quick Start Guide</p> <p>A comprehensive quick start guide for the DZEES Smart Battery Video Doorbell (DB1), covering packing list, product appearance, app installation, account registration, connection preparation, chime setup, installation, removal, tamper alerts, battery management, indicator light status, sharing, multi-device management, reset, storage, specifications, firmware upgrades, and FAQs.</p>



[Ring Playbook: Ontdek Slimme Deurbellen, Camera's en Beveiligingssystemen](#)

Verken het Ring Playbook voor een uitgebreid overzicht van Ring's slimme deurbellen, beveiligingscamera's, Ring Alarm en accessoires. Leer hoe Ring je huis veiliger maakt.



[Ring Video Doorbell \(2nd Generation\) Installation Guide](#)

Step-by-step instructions for physically installing the Ring Video Doorbell (2nd Generation) with an existing doorbell. Covers charging, removal of old doorbell, mounting, wiring, and securing the device.

Blink Outdoor (3rd Gen) User Manual



[Blink Outdoor \(3rd Gen\) User Manual: Setup, Installation, and Operation Guide](#)

This comprehensive user manual guides users through the setup, installation, and operation of the Blink Outdoor (3rd Gen) wireless security camera system. It covers account creation, app usage, device pairing, mounting, and feature configuration.



[Ring Video Doorbell 2: Setup and Installation Guide](#)

Comprehensive guide to setting up, installing, and troubleshooting your Ring Video Doorbell 2 for enhanced home security.