

MUDDY MUD-MPHATW

Muddy Morph AT&T Cellular Trail Camera User Manual

Model: MUD-MPHATW

INTRODUCTION

This manual provides detailed instructions for the setup, operation, and maintenance of your Muddy Morph AT&T Cellular Trail Camera. Designed for outdoor use, this camera captures high-resolution images and videos, transmitting them via the AT&T cellular network. Please read this manual thoroughly to ensure proper use and optimal performance of your device.

SETUP

1. Unboxing and Components

Verify that all components are present in the package:

- Muddy Morph Cellular Trail Camera
- Tree Strap

2. Battery Installation

The camera requires 8 AA batteries (not included). Ensure batteries are inserted with correct polarity as indicated inside the battery compartment.

3. SD Card Installation

Insert a compatible SD card (up to 32GB, Class 10 recommended) into the designated slot. Ensure the card is inserted correctly until it clicks into place.

4. SIM Card Installation

This cellular trail camera requires an activated AT&T compatible SIM card for cellular data transmission. Insert the SIM card into its slot as per the diagram inside the camera.

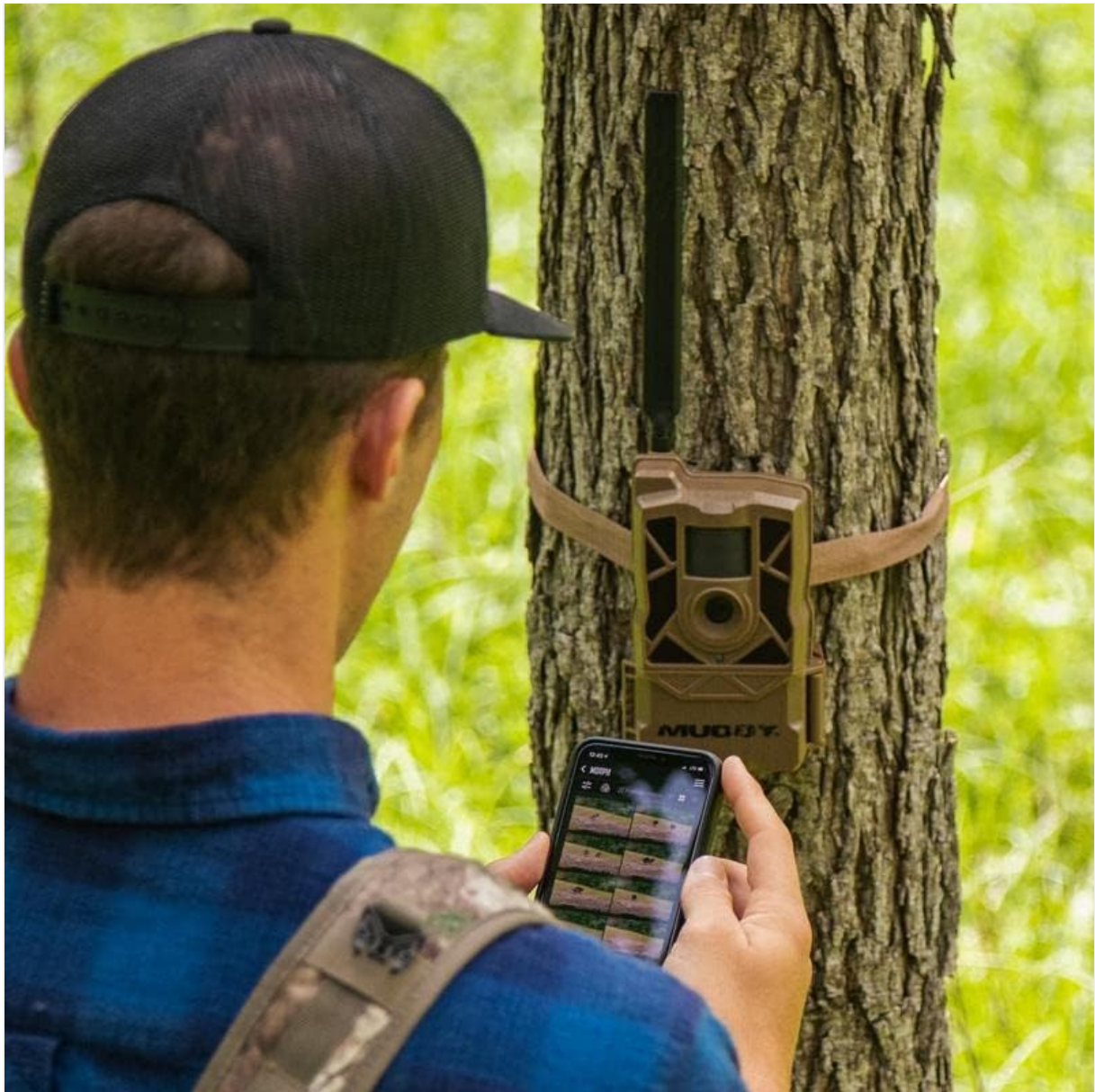


Image: Muddy Morph Trail Camera with its compartment open, revealing the QR code for setup and slots for batteries and SIM/SD cards.

5. Command Pro App Installation and Activation

Download the 'Command Pro' app from the Google Play Store or Apple App Store. Follow the in-app instructions for quick QR code setup. This app allows you to monitor and control your camera remotely.



Image: A person using a smartphone to configure the trail camera, which is mounted on a tree.

6. Mounting the Camera

Use the provided tree strap to securely mount the camera to a tree or post. Ensure the camera is stable and pointed towards the desired monitoring area.



Image: The Muddy Morph Trail Camera mounted on a tree, ready for operation.

OPERATING INSTRUCTIONS

1. Powering On/Off

Once batteries and SD/SIM cards are installed, power on the camera using the designated switch. The camera will perform a self-check and connect to the cellular network.

2. Image and Video Capture

The camera is equipped to capture 26 Megapixel still images and 1080p video at 30 frames per second. It features a rapid 0.4-second trigger speed and a 100-foot detection range. Burst mode allows for 1-9 images per triggering event.

3. Night Vision Capabilities

The camera utilizes 42pcs 940nm LEDs for discreet night vision, offering a 100-foot night vision range. Advanced low-light technology enables 'Night Color' images, providing color detail in low-light conditions.



Image: A night vision photograph of two deer, demonstrating the camera's low-light imaging capabilities.



Image: A night vision photograph of a deer with prominent antlers, showcasing the camera's clarity in darkness.



Image: A daytime photograph of a deer with large antlers, illustrating the camera's image quality in daylight.

4. Remote Control and Management via Command Pro App

The Command Pro app allows you to remotely monitor your camera, change settings, and download images. You can receive high- or low-resolution images directly to your phone in real-time, and manage your media from anywhere with AT&T service.

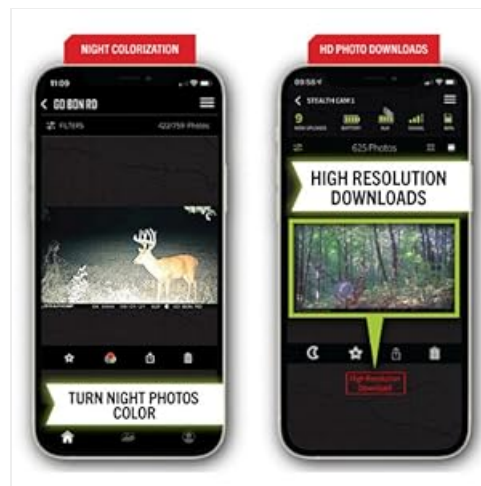


Image: Command Pro app interface demonstrating the night colorization feature for captured images.

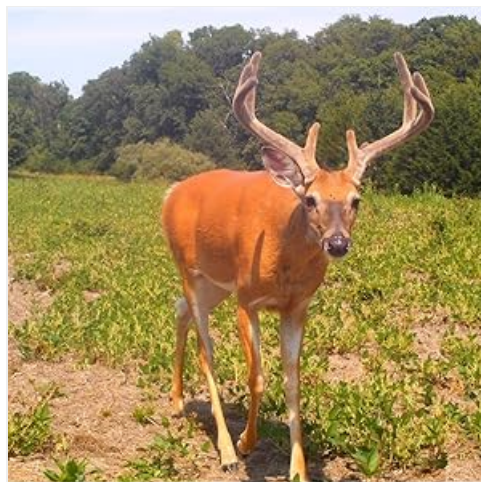


Image: Command Pro app interface highlighting the option for downloading high-resolution photos.

MAINTENANCE

1. Battery Replacement

Regularly check battery levels via the Command Pro app. Replace all 8 AA batteries simultaneously with new, high-quality alkaline or lithium batteries for optimal performance, especially in cold weather.

2. SD Card Management

Periodically format your SD card using the camera's settings or a computer to ensure reliable operation and prevent data corruption. Back up important images and videos before formatting.

3. Cleaning

Gently clean the camera lens and PIR sensor window with a soft, lint-free cloth. Avoid abrasive materials or harsh chemicals. Ensure the camera housing is free from dirt, dust, and debris.

4. Firmware Updates

Check the Command Pro app or the Muddy website for available firmware updates. Keeping your camera's firmware up-to-date ensures access to the latest features and performance improvements.

TROUBLESHOOTING

- **Camera Not Powering On:** Ensure batteries are correctly installed and fully charged. Check for proper SD card insertion.
- **No Images/Videos Captured:** Verify the camera is in an active mode. Check the SD card for sufficient space and proper formatting. Ensure the PIR sensor is not obstructed.
- **No Cellular Transmission:** Confirm the SIM card is active and has a data plan. Check cellular signal strength in the camera's location via the app. Ensure the camera's firmware is up-to-date.
- **Poor Image/Video Quality:** Clean the camera lens. Ensure the camera is mounted securely to prevent movement. Check settings for desired resolution.
- **App Connectivity Issues:** Ensure your mobile device has an internet connection. Verify the camera is powered on and connected to the cellular network.

For further assistance, refer to the Command Pro app's help section or contact Muddy customer support.

SPECIFICATIONS





Model	MUD-MPHATW
Still Image Resolution	26 Megapixels (MP)
Video Resolution	1080p at 30 FPS
Trigger Speed	0.4 seconds
Detection Range	100 feet
Night Vision LEDs	42pcs 940nm (No-Glow)
Night Vision Range	100 feet

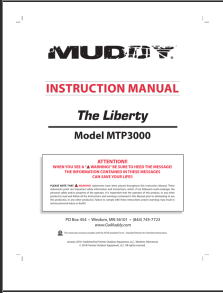
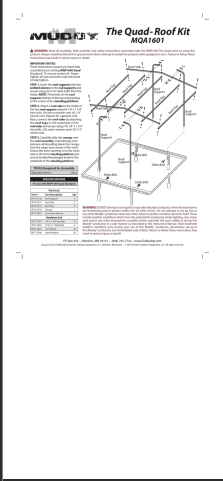
Power Source	8 AA Batteries (not included)
Memory Card Type	SD Card (up to 32GB)
Connectivity	AT&T Cellular Network, Wi-Fi (for local app connection)
Control Method	Remote (via Command Pro App)
Dimensions (L x W x H)	5.5 x 3 x 7.5 inches
Weight	1.19 pounds
IP Rating	IP54

WARRANTY AND SUPPORT

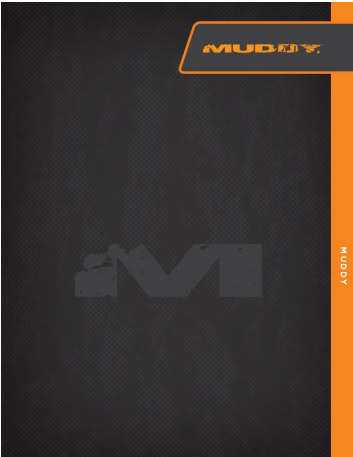
For information regarding product warranty, technical support, or service, please visit the official [MUDDY Store](#) or contact their customer service directly. Keep your purchase receipt for warranty claims.

Related Documents - MUD-MPHATW

 <p>Muddy Cellular Instruction Manual Powerful 1080P Full HD Imaging, 12MP Resolution, 4G LTE Android, or on the web at www.muddycommand.com</p>	<p>Muddy Cellular Instruction Manual: Setup, Features & Support</p> <p>Comprehensive instruction manual for the Muddy Cellular trail camera, powered by Stealth Cam COMMAND. Learn setup, configuration, features, accessories, and troubleshooting.</p>
 <p>Muddy MTC100K Instruction Manual</p>	<p>Muddy MTC100K Trail Camera Instruction Manual</p> <p>This manual provides instructions for setting up, configuring, and using the Muddy MTC100K trail camera. It covers features such as detection range, trigger speed, water resistance, and IR LEDs, along with detailed steps for battery and SD card installation, camera configuration modes, viewing and deleting images, frequently asked questions, product care, and warranty information.</p>
 <p>Muddy MUD-RBI Remote Beacon Illuminator User Manual</p>	<p>Muddy MUD-RBI Remote Beacon Illuminator User Manual</p> <p>User manual for the Muddy MUD-RBI Remote Beacon Illuminator, detailing installation, setup, operation, pairing, and warranty information.</p>
 <p>Muddy INSTRUCTION MANUAL The 4 Foot Extension Kit for Liberty Model MTA3004-EX</p>	<p>Muddy MTA3004-EX 4 Foot Extension Kit for Liberty Instruction Manual</p> <p>Instruction manual for the Muddy MTA3004-EX 4 Foot Extension Kit for Liberty, providing essential safety warnings, detailed assembly steps, and a comprehensive parts list for treestand users.</p>

	<p>Muddy The Liberty MTP3000 Instruction Manual</p> <p>Comprehensive instruction manual for the Muddy The Liberty MTP3000 treestand, detailing safety warnings, usage instructions, parts list, hardware list, assembly steps, installation, removal, and care.</p>
	<p>Muddy MQA1601 Quad-Roof Kit Assembly Instructions</p> <p>Step-by-step assembly guide for the Muddy MQA1601 Quad-Roof Kit, an accessory for the MQP1600 Quad Quadpod. Includes parts list, hardware details, and critical safety warnings regarding weather conditions.</p>

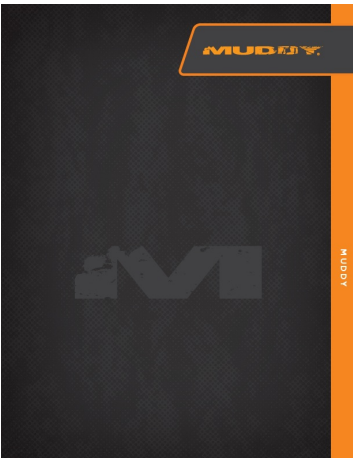
Documents - MUDDY – MUD-MPHATW



[Muddy 2023 Product Catalog: Hunting Gear, Stands, Blinds, and More](#)

Explore the comprehensive 2023 catalog from Muddy, featuring a wide range of hunting gear including towers, ladderstands, ground blinds, trail cameras, harnesses, and essential accessories. Discover innovative products designed for the modern outdoorsman.

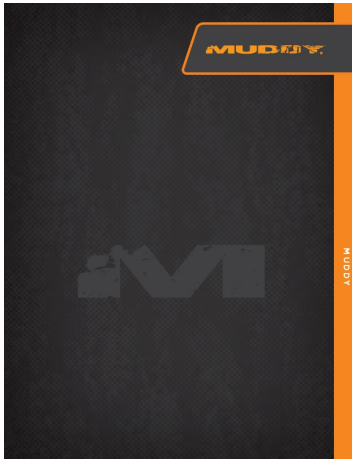
lang:en score:30 filesize: 34.72 M page_count: 27 document date: 2022-12-20



[Muddy 2023 Hunting Gear Catalog: Treestands, Blinds, Cameras & Accessories](#)

Explore the comprehensive 2023 Muddy catalog featuring a wide range of hunting gear, including treestands, ground blinds, ladderstands, tripods, quadpods, trail cameras, harnesses, and essential accessories for hunters.

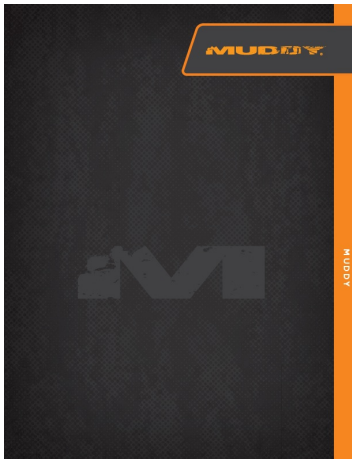
lang:en score:28 filesize: 34.72 M page_count: 27 document date: 2022-12-20



[Muddy Hunting Gear Catalog - Towers, Stands, Blinds, Cameras, and Accessories](#)

Explore the comprehensive range of Muddy hunting gear, including innovative towers, ladder stands, tripod stands, ground blinds, cellular trail cameras, harnesses, and essential hunting accessories. Find detailed product specifications and model numbers.

lang:en score:19 filesize: 7.83 M page_count: 27 document date: 2023-09-15



[Muddy Hunting Gear and Accessories Catalog](#)

Comprehensive catalog of Muddy brand hunting gear, including towers, ladder stands, tripods, climbing systems, harnesses, trail cameras, ground blinds, accessories, seats, backpacks, safety equipment, and knives.

lang:en score:17 filesize: 7.83 M page_count: 27 document date: 2023-09-15