

[Manuals.plus](#) /

› [AMBIFUL](#) /

› AMBITFUL FW22x90 Bowens Mount Softbox Instruction Manual

AMBIFUL FW22x90

AMBIFUL FW22x90 Bowens Mount Softbox Instruction Manual

Model: FW22x90

INTRODUCTION

The AMBITFUL FW22x90 Bowens Mount Softbox is designed to provide soft, even, and controlled lighting for various photography and videography applications. Its rectangular shape is ideal for portraiture, product photography, and live streaming, offering a versatile lighting solution. This softbox features a Bowens mount for broad compatibility with studio flashes and continuous lights, a foldable design for portability, and includes a honeycomb grid for enhanced light control.

WHAT'S IN THE BOX

What's in the Box

Softbox	×1	Mount	×1	Support Rod	×4
Outer Soft light Cloth	×1	Inner Soft Light Cloth	×1	Storage Bag	×1
Honeycomb Grid	×1				



Image: All components included in the AMBITFUL FW22x90 Softbox package.

- Softbox (1x)
- Bowens Mount Adapter Ring (1x)
- Support Rods (4x)
- Outer Soft Light Cloth (Diffuser) (1x)
- Inner Soft Light Cloth (Diffuser) (1x)
- Honeycomb Grid (1x)
- Carrying Bag (1x)

SETUP INSTRUCTIONS

Follow these steps to assemble your AMBITFUL FW22x90 Bowens Mount Softbox:

1. **Prepare the Softbox:** Lay the softbox flat with the Bowens mount opening facing up.
2. **Insert Support Rods:** Take one support rod and insert its end into one of the designated holes on the Bowens mount adapter ring. Then, carefully bend the rod and insert the other end into the corresponding pocket on the opposite corner of the softbox. Repeat this process for all four support rods, inserting them diagonally to form the softbox shape. This step may require some force due to the tension of the rods.

3. **Secure the Softbox to the Mount:** Ensure all support rods are securely seated in both the Bowens mount and the softbox pockets. The softbox should now hold its rectangular shape.
4. **Attach Inner Diffuser:** Secure the inner soft light cloth (diffuser) inside the softbox using the attached Velcro strips. This diffuser helps to further soften the light.
5. **Attach Outer Diffuser:** Attach the outer soft light cloth (diffuser) to the front edge of the softbox using its Velcro strips. This provides the primary diffusion layer.
6. **Attach Honeycomb Grid (Optional):** If desired, attach the honeycomb grid to the outer edge of the softbox, over the outer diffuser, using its Velcro strips. The grid helps to control light spill and create a more directional light.
7. **Mount to Light Stand:** Attach the assembled softbox (via the Bowens mount) to your compatible studio light or flash unit. Then, mount the light unit onto a sturdy light stand.

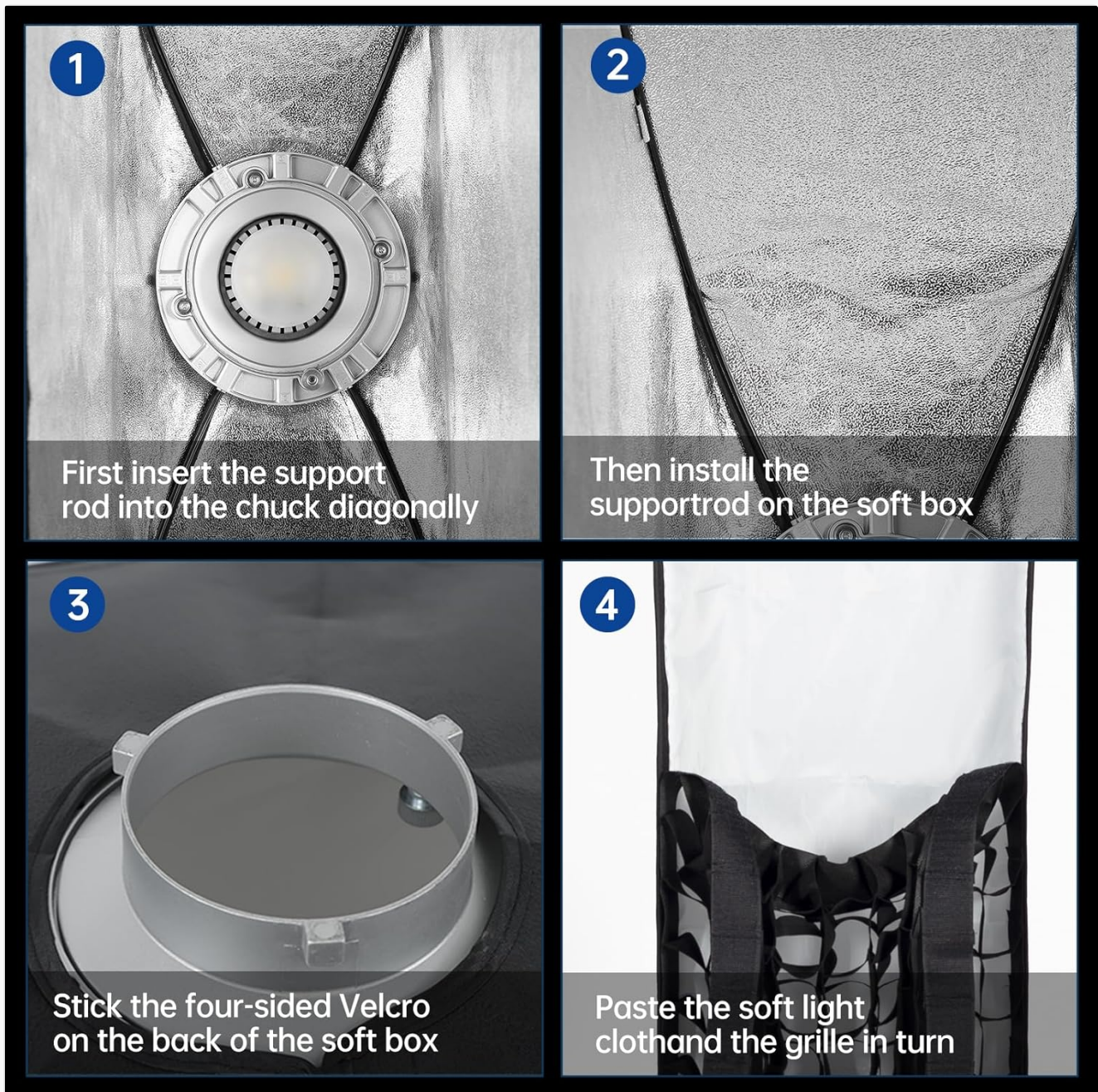


Image: Visual guide for softbox assembly steps.

Your browser does not support the video tag.

Video: Demonstrates the assembly process for an AMBITFUL softbox, including inserting rods and attaching diffusers.

OPERATING THE SOFTBOX

The AMBITFUL FW22x90 softbox is designed for versatile lighting control:

- **Soft and Even Lighting:** Use both the inner and outer diffusers for the softest and most even light output, ideal for flattering portraits and smooth product illumination.
- **Increased Contrast and Directionality:** Attach the honeycomb grid to reduce light spill and create a more focused beam of light. This is useful for highlighting specific areas or adding dramatic effects.
- **Adjustable Angle:** The Bowens mount features a 360-degree adjustable angle clamp, allowing you to precisely position the softbox to direct light as needed for your shot.

DIFFERENT EFFECTS DISPLAY

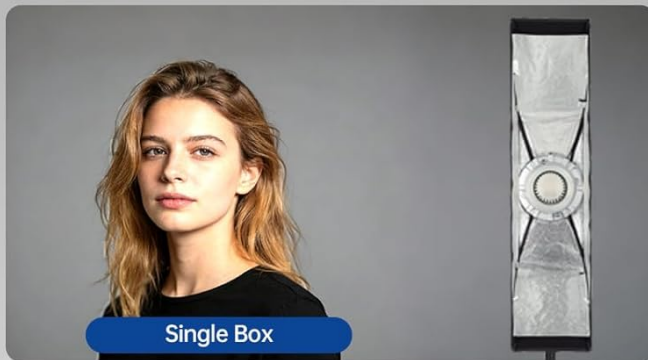


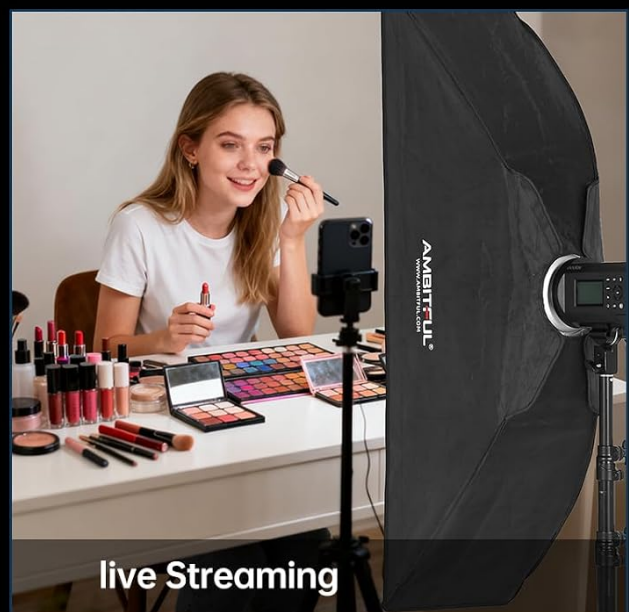
Image: Demonstrates the different lighting effects achievable with and without diffusers and the honeycomb grid.

WIDE APPLICATION

portraiture



product photos



live Streaming

Image: Examples of the softbox being used in various photography and videography scenarios.

MAINTENANCE

- **Cleaning:** Gently wipe the exterior of the softbox with a soft, damp cloth if it becomes dirty. For the reflective interior and diffusers, use a lint-free cloth to avoid leaving fibers. Do not use harsh chemicals or abrasive cleaners.
- **Storage:** When not in use, disassemble the softbox and store all components in the provided carrying bag. This protects the fabric and rods from damage and keeps all parts together.
- **Handling:** Avoid excessive force when assembling or disassembling, especially with the support rods, to prevent bending or breaking.

TROUBLESHOOTING

Difficulty Assembling/Disassembling:

The support rods are designed to be taut to ensure the softbox maintains its shape. This can make assembly and disassembly challenging initially. Apply firm, even pressure when inserting or removing the rods. Inserting them

diagonally first can ease the process. With practice, it will become easier.

Uneven Light Output:

Ensure both the inner and outer diffusers are correctly installed and smoothed out. Check that the light source is properly centered within the Bowens mount. If using the honeycomb grid, ensure it is evenly attached.

Softbox Not Holding Shape:

Verify that all four support rods are fully inserted into both the Bowens mount adapter ring and the fabric pockets at the corners of the softbox. Inspect rods for any bending or damage.

SPECIFICATIONS

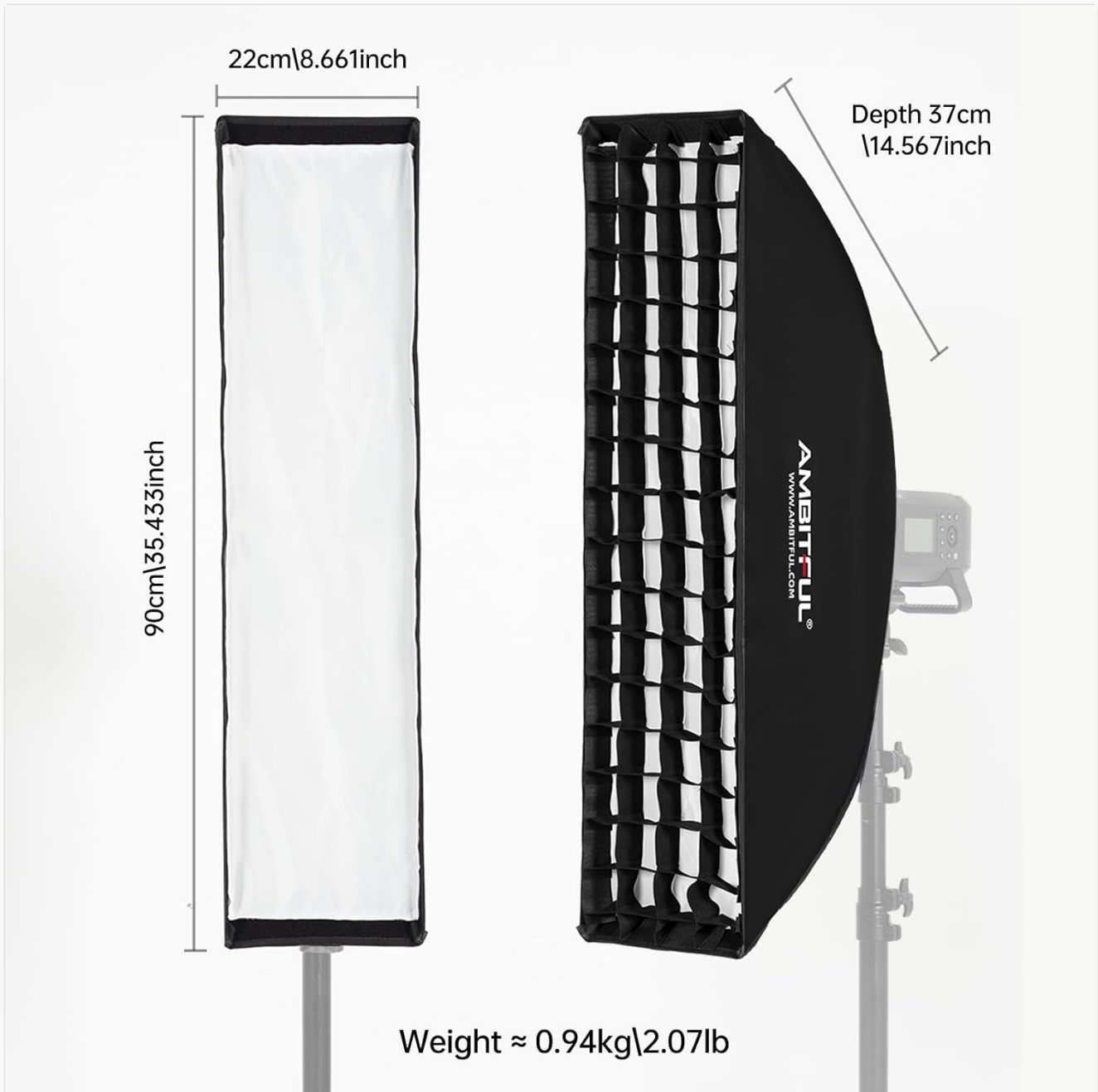


Image: Key dimensions and weight of the FW22x90 softbox.

Feature	Detail
Model Number	FW22x90 (Glimmer-soft)

Dimensions (L x W x H)	22 x 90 x 90 cm (approx. 22f. x 90an. x 90al. centimeters)
Weight	953 g (approx. 0.94kg / 2.07lb)
Mount Type	Bowens Mount
Material	Reflective Fabric
Color	Black, White
Included Components	Softbox, Honeycomb Grid, Carrying Bag, Bowens Speed Mount
Water Resistance Level	Water Resistant

WARRANTY INFORMATION

This AMBITFUL FW22x90 Bowens Mount Softbox comes with a **One Year Warranty** from the date of purchase. Please retain your proof of purchase for any warranty claims. The warranty covers manufacturing defects and material faults under normal use. It does not cover damage caused by misuse, accidents, unauthorized modifications, or normal wear and tear.

SUPPORT

For technical assistance, troubleshooting, or warranty inquiries regarding your AMBITFUL FW22x90 Bowens Mount Softbox, please contact AMBITFUL customer support through the retailer where you purchased the product or visit the official AMBITFUL website for contact information.

You can also visit the [AMBITFUL Brand Store](#) for more product information and support resources.