

Manuals.plus /

› JFG RACING /

› JFG RACING Motorcycle Ignition Key Switch and Lock Cylinder Set for Sur Ron Light Bee X/S - Instruction Manual

## JFG RACING S14142007



# JFG RACING Motorcycle Ignition Key Switch and Lock Cylinder Set

FOR SUR RON LIGHT BEE X/S

## Introduction

---

This manual provides instructions for the installation, operation, and maintenance of your JFG RACING Ignition Key Switch and Lock Cylinder Set. This product is designed as a replacement or upgrade for Sur Ron Light Bee X/S electric motorcycles. Please read this manual thoroughly before installation and use to ensure proper function and safety.

## Product Overview

---

The JFG RACING Ignition Key Switch and Lock Cylinder Set includes components for both the motorcycle's ignition and the battery compartment lock. It is constructed from durable aluminum and iron for longevity.



**Figure 1:** Complete JFG RACING Ignition Key Switch and Lock Cylinder Set.



Figure 2: Overview of the key switch kit components for Sur Ron motorcycles.

## Features

- **Ignition Key Switch:** A 2-position (ON-OFF) switch with a 2-way circuit.
- **Battery Compartment Lock:** Designed to secure the battery.
- **Durable Construction:** Made from high-quality aluminum and iron to resist corrosion and rust.
- **Direct Fit:** Engineered for specific compatibility with Sur Ron Light Bee X/S models.



**Figure 3:** Key features including unique key pattern, aluminum alloy + iron construction, enhanced protection, and smooth rotation.

## Compatibility

---

This ignition key switch and lock cylinder set is compatible with the following models:

- Sur Ron Light Bee X
- Sur Ron Light Bee S

Please verify your motorcycle's model before attempting installation.

## Package Contents

---

The package includes the following items:

- 1 x Ignition Key Switch
- 1 x Battery Compartment Lock Cylinder
- 2 x Keys
- 1 x Retaining Ring (for battery lock)



**Figure 4:** All components included in the key set package.

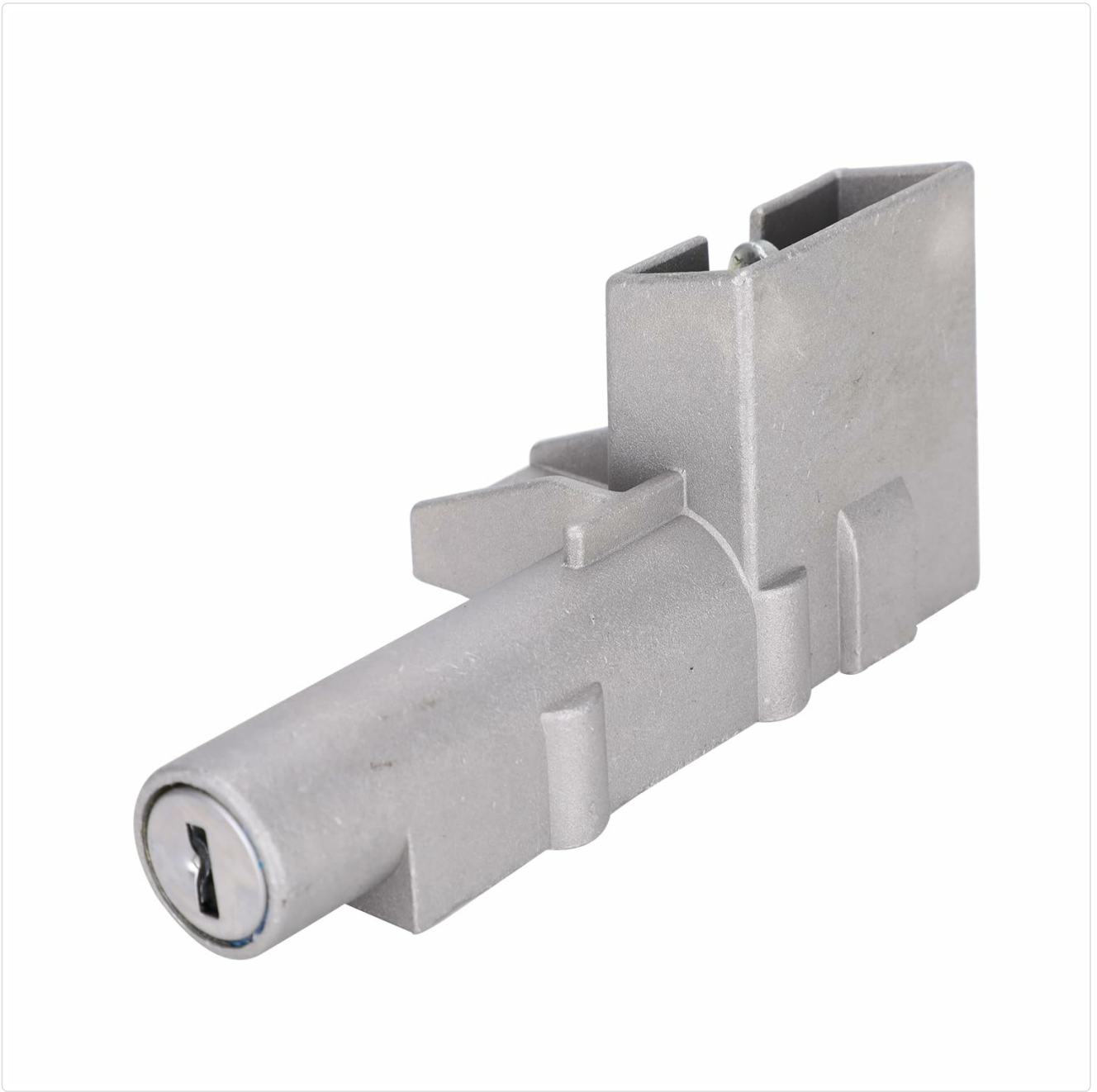
## Setup and Installation

---

Installation of the ignition key switch and battery lock cylinder requires basic mechanical knowledge and tools. If you are unsure about any step, it is recommended to seek professional assistance from a qualified motorcycle technician.

### General Installation Steps:

1. **Safety First:** Ensure the motorcycle is powered off and the battery is disconnected before beginning any installation.
2. **Access Components:** Locate the existing ignition switch and battery compartment lock on your Sur Ron Light Bee X/S. This may require removing fairings or covers.
3. **Remove Old Components:** Carefully disconnect wiring from the old ignition switch and unmount both the old ignition switch and battery lock cylinder. Note the orientation and connection points.
4. **Install New Battery Lock Cylinder:**



**Figure 5:** The battery compartment lock cylinder.



**Figure 6:** Battery lock cylinder with a key inserted.



**Figure 7:** The battery compartment lock installed, providing anti-theft protection.

Insert the new battery lock cylinder into its designated slot. Secure it using the provided retaining ring or existing hardware. Ensure it is firmly seated and operates smoothly with the key.

#### 5. Install New Ignition Key Switch:



**Figure 8:** The ignition key switch with a key inserted.



**Figure 9:** The unique lock core design of the ignition start switch.

Mount the new ignition key switch into its position. Connect the wiring harness to the motorcycle's electrical system. Ensure the connections are secure and correctly matched. The switch operates in a 2-position (ON-OFF) manner.

6. **Test Functionality:** Before reassembling any covers, reconnect the battery and test both the ignition switch and the battery lock. Ensure the ignition turns the motorcycle's electrical system ON and OFF, and the battery lock secures and releases the battery compartment as expected.
7. **Reassemble:** Once functionality is confirmed, reattach any removed fairings or covers.

**Important: Incorrect installation can lead to electrical issues or damage. If you are not confident in your ability to perform this installation, please consult a professional.**

## Operation

---

### Ignition Key Switch:

- **To Turn ON:** Insert the key into the ignition switch and turn it clockwise to the "IGNITION" or "ON" position. This will activate the motorcycle's electrical system.
- **To Turn OFF:** Turn the key counter-clockwise to the "OFF" position. Remove the key when the motorcycle is not in use to prevent unauthorized operation.



**Figure 10:** The ignition switch in the "ON" position.



Figure 11: The ignition switch in the "OFF" position.

### Battery Compartment Lock:

- **To Lock:** Insert the key into the battery lock cylinder and turn it to the locked position. This secures the battery compartment.
- **To Unlock:** Insert the key and turn it to the unlocked position. This allows access to the battery compartment.

### Maintenance

---

- **Cleaning:** Keep the key switch and lock cylinders clean from dirt, dust, and debris. Use a soft, dry cloth for cleaning. Avoid using harsh chemicals or abrasive materials.
- **Lubrication:** Periodically apply a small amount of graphite lubricant or a silicone-based spray to the keyholes to ensure smooth operation and prevent sticking. Do not use oil-based lubricants as they can attract dirt.
- **Inspection:** Regularly inspect the components for any signs of wear, damage, or corrosion. Ensure all connections are secure.

- **Key Care:** Avoid bending or forcing the keys. Store spare keys in a safe place.

## Troubleshooting

---

Problem	Possible Cause	Solution
Key does not turn smoothly in ignition/lock.	Dirt/debris in keyhole, lack of lubrication, bent key.	Clean keyhole, apply graphite lubricant, inspect key for damage.
Motorcycle does not power on when ignition is turned.	Loose wiring connection, faulty switch, battery issue.	Check all electrical connections. If problem persists, consult a professional.
Battery compartment lock is stiff or not engaging.	Dirt/debris, misalignment, lack of lubrication.	Clean the lock mechanism, apply lubricant, check for proper alignment during installation.

For issues not listed here or if solutions do not resolve the problem, please contact JFG RACING customer support or a certified technician.

## Specifications

---

- **Model Number:** S14142007
- **Operation Mode:** ON-OFF
- **Contact Type:** Normally Open
- **Connector Type:** Plug In
- **Circuit Type:** 2-way
- **Mounting Type:** Panel Mount
- **Actuator Type:** Ignition
- **Contact Material:** Aluminum and Iron
- **Package Dimensions:** 5 x 3.15 x 2.44 inches
- **Weight:** Approximately 0.01 ounces (product only)

## Warranty and Support

---

For information regarding product warranty, returns, or technical support, please refer to the purchase documentation or contact JFG RACING customer service directly through their official channels. Contact details can typically be found on the seller's page or the JFG RACING website.

**JFG RACING Store Link:** Visit JFG RACING Store on Amazon