

Manuals.plus /

› GINTOOYUN /

› GINTOOYUN 2EDGRK 4-Pole 5.08mm PCB Pluggable Screw Terminal Block Connectors User Manual

GINTOOYUN GINTOOYUN-4P-5.08mm

GINTOOYUN 2EDGRK 4-Pole 5.08mm PCB Pluggable Screw Terminal Block Connectors User Manual

Model: GINTOOYUN-4P-5.08mm

Brand: GINTOOYUN

1. INTRODUCTION

This manual provides comprehensive instructions for the GINTOOYUN 2EDGRK 4-Pole 5.08mm PCB Pluggable Screw Terminal Block Connectors. These connectors are designed for reliable and efficient electrical connections in various applications. They feature a quick-release capability and solderless wiring, simplifying installation and maintenance.

The package includes 5 sets of male and female plug terminals, each with 4 poles and a 5.08mm pitch. These components are widely utilized in electronics, communication equipment, instruments, computers, automatic control systems, household appliances, and alarm equipment.

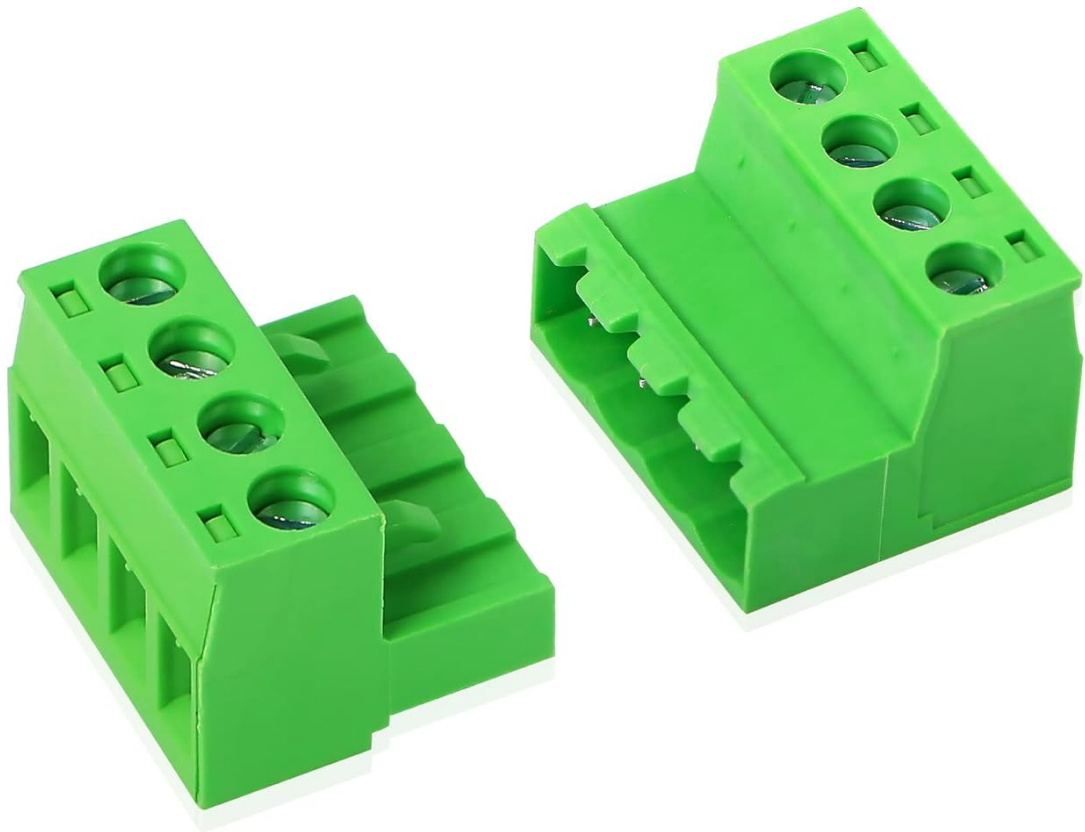


Image 1.1: Overview of GINTOOYUN 4-Pole 5.08mm PCB Pluggable Screw Terminal Block Connectors.

2. PRODUCT COMPONENTS

Each package contains 5 complete sets of 4-pole 5.08mm pluggable screw terminal blocks. A set consists of one male connector and one female connector.

- 5 x Male 4-Pole 5.08mm Plug Terminals
- 5 x Female 4-Pole 5.08mm Plug Terminals

One Package Includes 5 Sets (5 female +5 male connectors)



Image 2.1: Contents of one package, showing five male and five female connector sets.



Male Connector



Female Connector

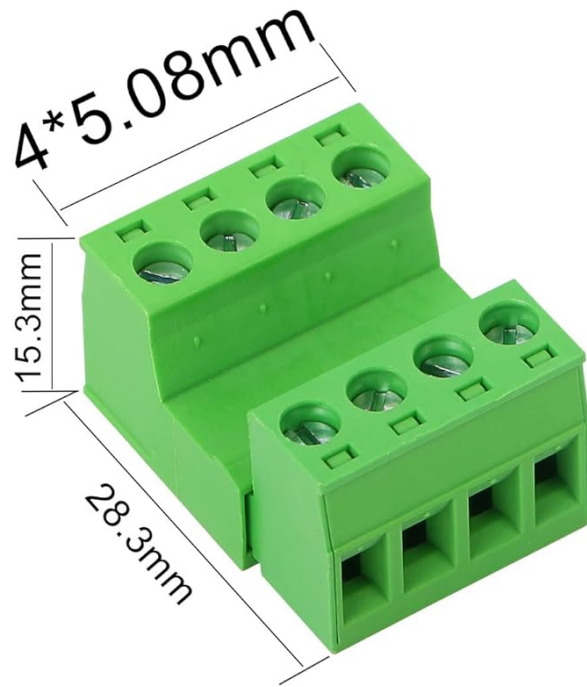


Image 2.2: Identification of male and female connectors, including key dimensions (5.08mm pitch, 15.3mm height, 28.3mm length).

3. SPECIFICATIONS

Feature	Specification
Poles	4P
Pitch	5.08mm
Rated Voltage	300V
Rated Current	15A
Wire Range	28-12AWG
Screw Type	M2.5, Steel, Zinc plated
Contact Material	Phosphor bronze, Nickel plating
Wire Cage Material	Brass, Nickel plating
Plastic Parts Material	PA66 UL94V-0 (Flame Retardant)
Temperature Range	-40°C to +105°C
Wire Stripping Length	7-8mm
Color	Green
Mounting Type	Plug-in, Surface

These connectors are designed with high-quality materials for durability and performance:

- **Plastic Parts:** Made from PA66 UL94V-0 flame-retardant material for enhanced safety.
- **Screws:** Steel with environmentally friendly electroplating to prevent slippage and corrosion.
- **Contacts:** Phosphor bronze with nickel plating for corrosion resistance and high stability.

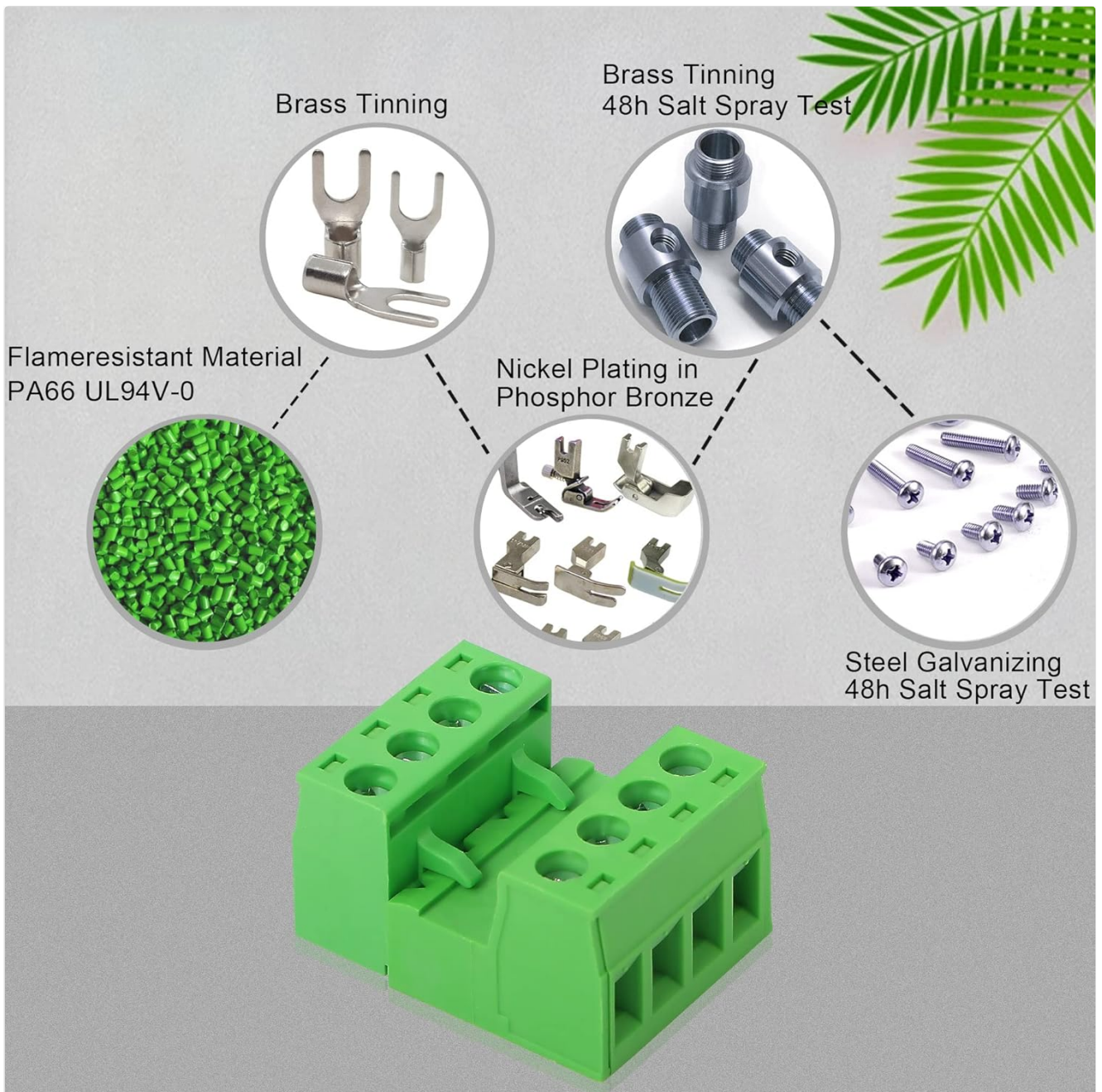


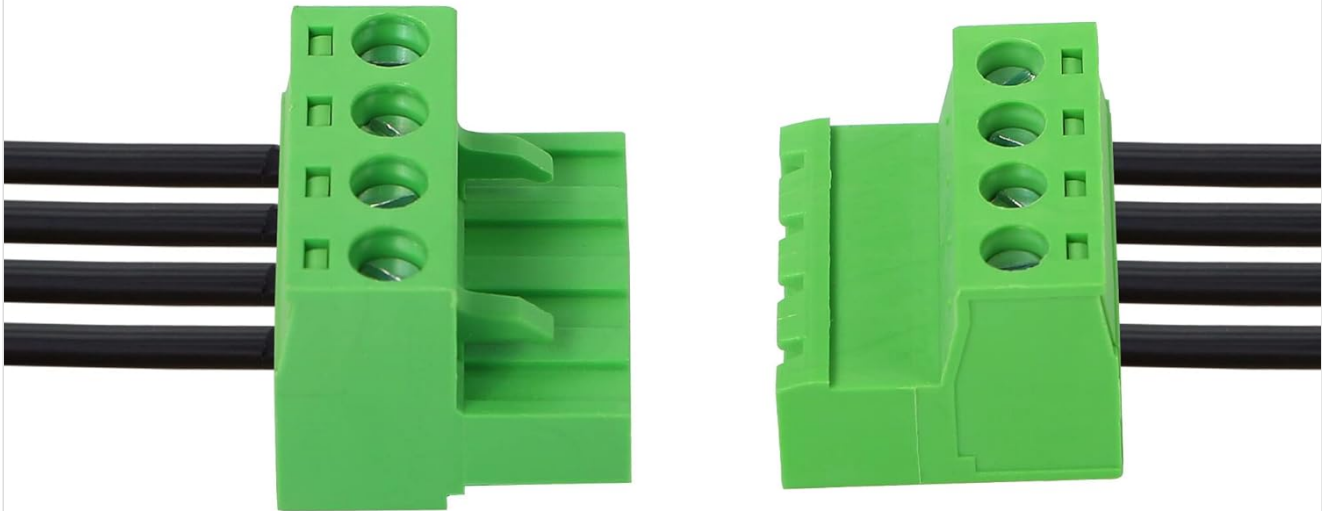
Image 3.1: Illustration of the high-quality materials used in the connectors, including flame-resistant plastic and corrosion-resistant metals.

4. SETUP AND INSTALLATION

The GINTOOYUN pluggable screw terminal blocks are designed for straightforward installation without soldering. Follow these steps to connect your wires:

1. **Prepare Wires:** Strip 7-8mm of insulation from the end of each wire (28-12AWG) that you intend to connect. Ensure the wire strands are neatly twisted if using stranded wire.
2. **Loosen Screws:** Using an appropriate screwdriver, loosen the M2.5 screws on the terminal block. Do not remove the screws completely.
3. **Insert Wires:** Insert the stripped end of each wire into the corresponding terminal opening. Ensure the wire is fully seated and no loose strands are exposed outside the terminal.
4. **Tighten Screws:** Tighten the M2.5 screws firmly to secure the wires. Do not overtighten, as this can damage the wire or the terminal block. Gently tug on each wire to confirm it is securely held.
5. **Connect Male and Female Blocks:** Once all wires are secured in both the male and female terminal blocks,

align the two parts and push them together until they snap firmly into place. The quick-disconnect design allows for easy connection and disconnection.



Just need to loosen the screws to land the wires

Image 4.1: Demonstrates the process of loosening screws to land wires into the terminal block.

5. OPERATION

Once installed, the GINTOOYUN pluggable screw terminal blocks provide a secure and reliable electrical connection. The primary operational benefit is the quick-disconnect feature:

- **Connecting:** Simply align the male and female connectors and push them together until they click, establishing a secure electrical connection.
- **Disconnecting:** To disconnect, gently pull the male and female connectors apart. This allows for easy swapping of devices or maintenance without needing to unscrew individual wires.

The anti-vibration design ensures a long-term airtight connection, minimizing signal loss and maintaining high switching frequency without mechanical contact jitter.

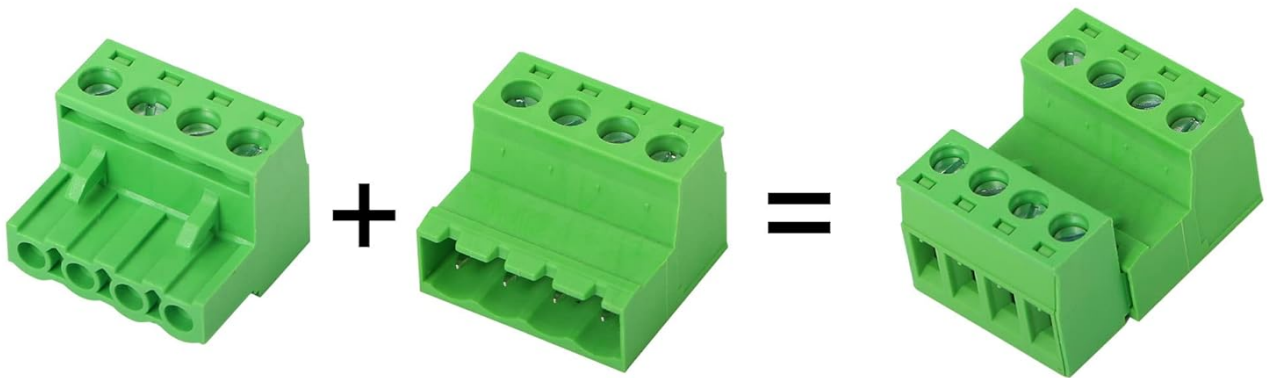
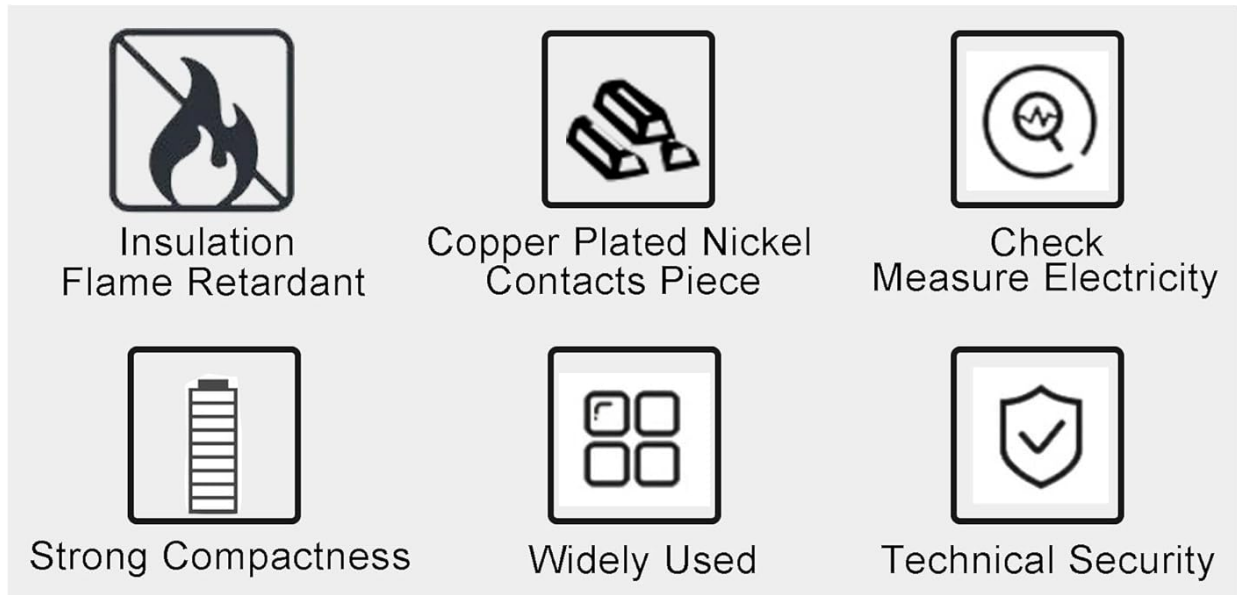


Image 5.1: Visual representation of the connected terminal blocks and their key features, including insulation, contact material, and wide applicability.

6. MAINTENANCE

These terminal blocks are designed for minimal maintenance due to their robust construction and corrosion-resistant materials. To ensure optimal performance and longevity:

- **Regular Inspection:** Periodically inspect the connections for any signs of loose wires, corrosion, or physical damage.
- **Cleaning:** If necessary, gently clean the exterior of the connectors with a dry, soft cloth. Avoid using harsh chemicals or abrasive materials.
- **Secure Connections:** Ensure all screw terminals remain tightened. If a wire appears loose, re-tighten the corresponding screw.

7. TROUBLESHOOTING

Most issues with terminal blocks relate to improper installation. If you encounter problems, consider the following:

- **No Electrical Connection:**
 - Verify that wires are stripped to the correct length (7-8mm) and fully inserted into the terminal.
 - Ensure all screws are tightened securely, making good contact with the wire.
 - Check that the male and female connectors are fully engaged and snapped together.
- **Loose Connection:**
 - Re-tighten all screw terminals.
 - Ensure the wire gauge is within the specified range (28-12AWG) for a proper fit.
- **Difficulty Connecting/Disconnecting:**
 - Ensure the male and female connectors are correctly aligned before attempting to push them together.
 - Check for any debris or damage that might obstruct the connection.

8. SAFETY INFORMATION

Adherence to safety guidelines is crucial when working with electrical components. These GINTOOYUN terminal blocks are designed with safety in mind, featuring:

- **Flame Retardant Material:** The plastic parts are made from PA66 UL94V-0 material, which is highly resistant to high temperatures and flame propagation, enhancing wiring safety.
- **Insulation:** Proper insulation prevents electrical leakage and ensures safe operation.

Always observe the following general safety precautions:

- **Disconnect Power:** Always ensure power is disconnected from the circuit before installing, inspecting, or performing maintenance on the terminal blocks.
- **Proper Tools:** Use appropriate tools, such as insulated screwdrivers, for installation.
- **Correct Wire Gauge:** Use wires within the specified gauge range (28-12AWG) to ensure a secure and safe connection.
- **Professional Installation:** If you are unsure about any aspect of electrical wiring, consult a qualified electrician.

INSULATION FLAME RETARDANT HIGH-QUALITY SHELL

PA66 FIREPROOF PLASTIC PARTS
WIRING SAFETY

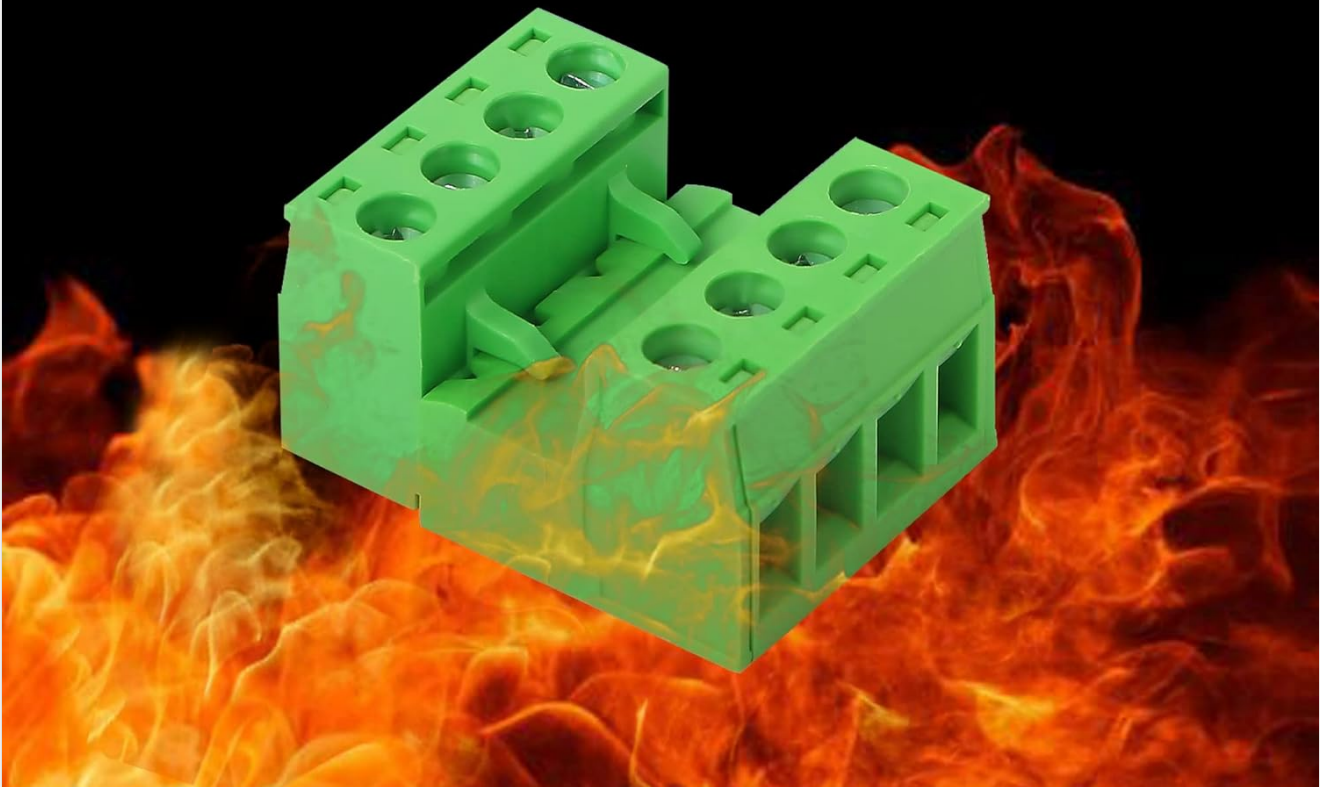


Image 8.1: Emphasizes the insulation and flame-retardant properties of the connector's PA66 plastic shell for wiring safety.

9. WARRANTY AND SUPPORT

Specific warranty details for the GINTOOYUN 2EDGRK 4-Pole 5.08mm PCB Pluggable Screw Terminal Block Connectors are not provided within this manual. For warranty information or technical support, please refer to the product packaging or contact the retailer from whom the product was purchased.