

E-YOOSO Z-22

E-YOOSO Z-22 60% Mechanical Gaming Keyboard User Manual

Model: Z-22

INTRODUCTION

Thank you for choosing the E-YOOSO Z-22 60% Mechanical Gaming Keyboard. This compact and responsive keyboard is designed for an enhanced typing and gaming experience. This manual provides detailed instructions for setup, operation, maintenance, and troubleshooting to help you get the most out of your device.



Image: The E-YOOSO Z-22 60% Mechanical Gaming Keyboard, showcasing its compact layout and RGB backlighting.

KEY FEATURES

- **63 Responsive Keys:** Features individual mechanical switches with full N-key rollover and anti-ghosting for precise input.
- **RGB Backlighting:** Offers 14 distinct LED lighting effects, including game mode backlights and custom recording key backlight functions.
- **Durable Construction:** Equipped with double-shot injection molded keycaps for transparent backlighting and longevity, combined with a robust ABS and aluminum build.

- **Outemu Red Switches:** Custom mechanical linear switches designed for durability and responsiveness, tested for 50 million keystrokes.
- **Compact Design:** A 60% layout with 63 keys, optimizing desk space without compromising performance.
- **Wide Compatibility:** Supports Windows XP/7/8/10, macOS, and Android operating systems.
- **Detachable Type-C Cable:** For easy connectivity and portability.


60% RGB Mechanical Keyboard



Size:11.40*4.33*1.18in Weight:1.20lb

20 backlight modes

FULL KEYS Anti-ghosting

FN + TAB =  RESET

FN +  =  FN+(↑↓) backlight brightness adjustment.

FN + ALT =  SWITCH

FN +  =  FN+(←→) Backlight speed adjustment

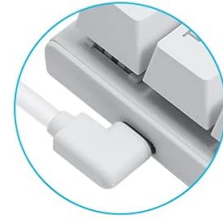
Image: Overview of the E-YOOSO Z-22 keyboard highlighting its 60% layout, RGB lighting, size, weight, 20 backlight modes, and full keys anti-ghosting feature.

SETUP INSTRUCTIONS

1. **Unpacking:** Carefully remove the keyboard and its accessories from the packaging.
2. **Connect the Cable:** Insert the Type-C end of the provided USB cable into the port on the keyboard.
3. **Connect to Device:** Plug the USB-A end of the cable into an available USB port on your computer (Laptop or PC).
4. **Driver Installation:** The keyboard is plug-and-play. Your operating system (Windows, macOS, Android) should automatically detect and install the necessary drivers. No additional software is typically required.

5. **Placement:** Position the keyboard comfortably on your desk. The compact design allows for more mouse movement space.

Detachable cable,



Rubber holder



Rubber pad



anti-interference
electromagnetic loop



Type-c



USB connector

Image: Close-up view of the E-YOOSO Z-22 keyboard's detachable Type-C cable, rubber holders, rubber pads, anti-interference loop, and USB connector, illustrating its connectivity components.

OPERATING INSTRUCTIONS

Function Key Combinations (FN Key)

The E-YOOSO Z-22 keyboard utilizes a Function (FN) key to access secondary functions printed on the keycaps. Press and hold the **FN** key, then press the desired key to activate its secondary function.

- **FN + F1-F12:** Access multimedia controls and system functions (e.g., volume, media playback).
- **FN + WIN:** Locks or unlocks the Windows key to prevent accidental presses during gaming.
- **FN + APP Key:** Locks or unlocks the Application key.

RGB Backlighting Control

The keyboard features customizable RGB backlighting. Use the following FN key combinations to adjust the lighting effects:

- **FN + Alt:** Cycles through 14 different RGB lighting effects.
- **FN + Space:** Cycles through 20 solid color lighting modes.

- **FN + ↑ / ↓**: Adjusts backlight brightness (15 monochromatic lighting modes).
- **FN + ← / →**: Adjusts backlight speed.
- **FN + TAB**: Resets backlight settings.

Your browser does not support the video tag.

Video: Demonstration of RGB lighting effects on the E-YOOSO Z-22 keyboard, showing how to change light modes using FN+Alt and solid colors using FN+Space.

Anti-Ghosting and N-Key Rollover

The E-YOOSO Z-22 supports full N-key rollover and anti-ghosting, ensuring that every key press is registered accurately, even when multiple keys are pressed simultaneously. This feature is crucial for fast-paced gaming and typing.

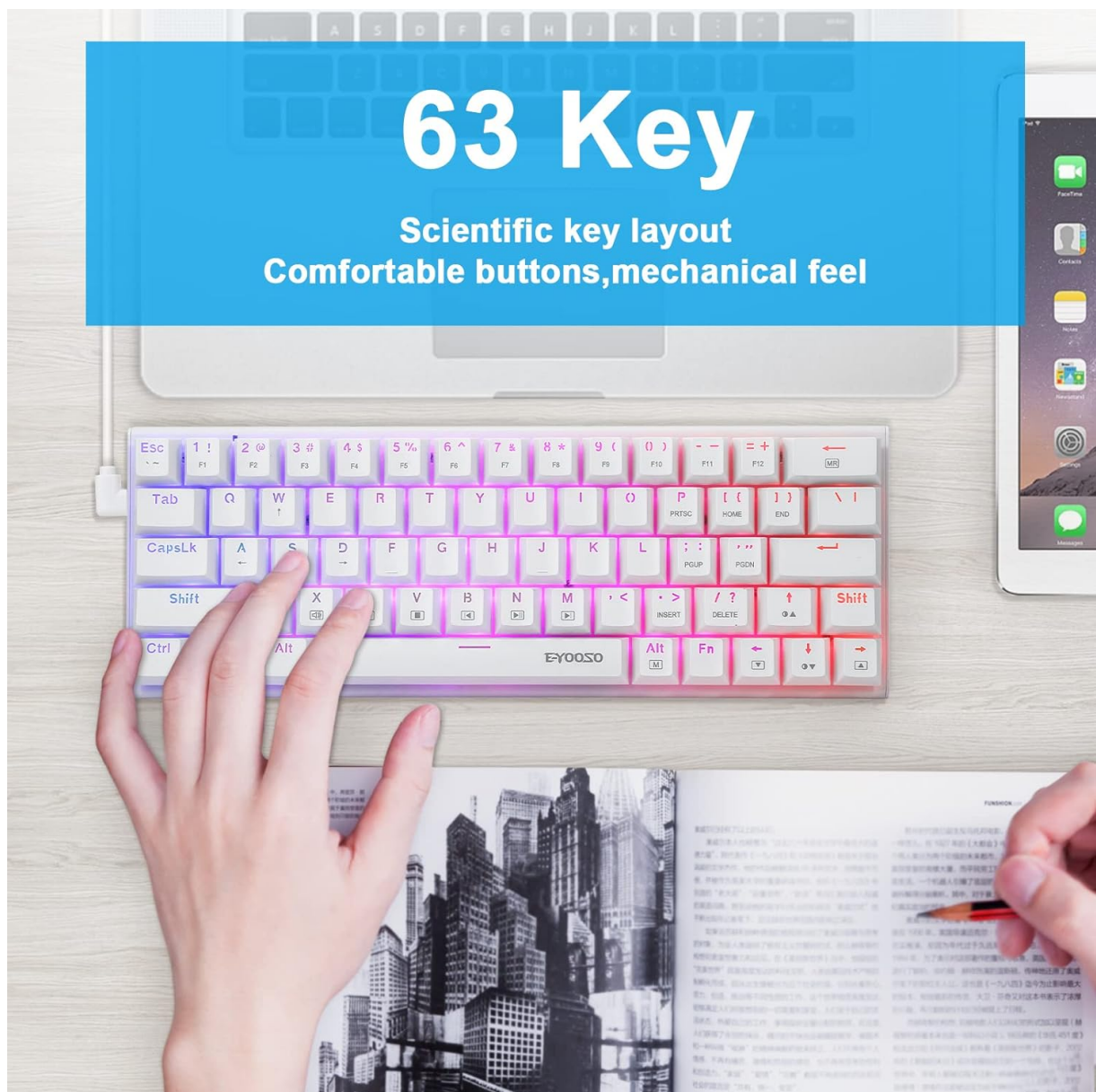


Image: The E-YOOSO Z-22 keyboard with a focus on its 63-key scientific layout, emphasizing comfortable buttons and mechanical feel.

MAINTENANCE

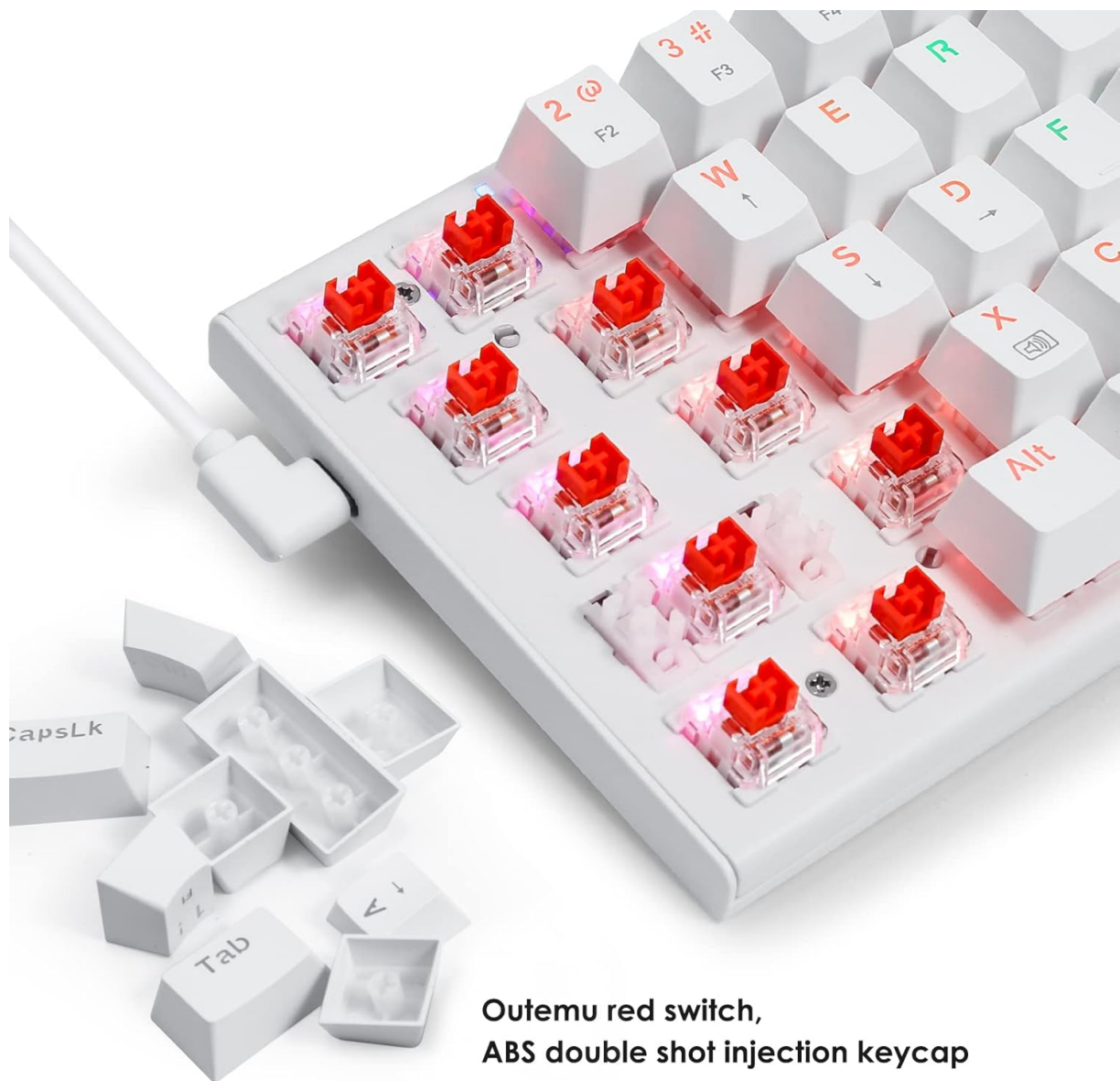
Cleaning the Keyboard

- **Disconnect:** Always disconnect the keyboard from your computer before cleaning.
- **Dust Removal:** Use a can of compressed air to blow away dust and debris from between the keycaps.
- **Surface Cleaning:** Wipe the keycaps and keyboard surface with a soft, slightly damp cloth. Avoid excessive moisture.
- **Stubborn Stains:** For stubborn stains, use a small amount of isopropyl alcohol on a cloth. Do not apply directly to the keyboard.

Keycap Removal and Replacement

The E-YOOSO Z-22 features removable keycaps, allowing for customization or thorough cleaning. Use a keycap puller (not included) for safe removal.

1. **Removal:** Gently attach the keycap puller to the keycap and pull straight up. Avoid twisting or excessive force to prevent damage to the switch.
2. **Replacement:** Align the new keycap with the switch stem and press down firmly until it clicks into place.



**Outemu red switch,
ABS double shot injection keycap**

Image: A close-up view of the E-YOOSO Z-22 keyboard's Outemu red switches and removed ABS double-shot injection keycaps, illustrating the internal components.

TROUBLESHOOTING

- **Keyboard Not Responding:**

- Ensure the USB cable is securely connected to both the keyboard and the computer.
 - Try plugging the keyboard into a different USB port on your computer.
 - Test the keyboard on another computer to rule out a system-specific issue.
- **Backlighting Not Working or Incorrect:**
 - Press **FN + Alt** to cycle through different lighting modes.
 - Press **FN + ↑** to increase brightness.
 - Press **FN + TAB** to reset backlight settings to default.
 - **Specific Keys Not Registering:**
 - Check for any physical obstructions under the keycap.
 - If comfortable, carefully remove the keycap and inspect the switch for damage or debris.
 - **Windows Key is Disabled:**
 - Press **FN + WIN** to toggle the Windows key lock.

SPECIFICATIONS







Model Name	Z-22
Key Count	63 Keys (60% Layout)
Switch Type	Outemu Red (Linear)
Connectivity	Wired (USB Type-C)
Backlighting	RGB (14 effects, 20 solid colors)
Key Rollover	Full N-Key Rollover
Anti-Ghosting	Supported
Keycap Material	ABS Double-Shot Injection
Compatible Devices	Laptop, PC
Operating Systems	Win XP/7/8/10, macOS, Android
Product Dimensions	10.24 x 3.94 x 0.98 inches
Item Weight	15.8 ounces
Material	Acrylonitrile Butadiene Styrene, Aluminum

WARRANTY AND SUPPORT

E-YOOSO products come with a 30-day money-back guarantee and a 12-month worry-free warranty. For any product-related inquiries, technical support, or warranty claims, please contact E-YOOSO customer service through the retailer's platform or the official E-YOOSO website.

Please retain your proof of purchase for warranty validation.

Related Documents - Z-22

	<p>E-YOOSO Z-686 Mechanical Keyboard User Manual</p> <p>User manual for the E-YOOSO Z-686 Mechanical Keyboard, a four-mode keyboard supporting Wired, 2.4G, and Bluetooth (3.0 + 5.0) connectivity. Includes features, function overview, operation instructions, backlight customization, macro recording, troubleshooting, and warranty information.</p>
	<p>E-YOOSO RGB Mechanical Keyboard User Manual</p> <p>User manual for the E-YOOSO RGB Mechanical Keyboard (Model Z-99, 7191), detailing product features, LED lighting modes, system compatibility (Windows/Mac), custom key settings, warranty information, and regulatory compliance.</p>
	<p>E-YOOSO CQ109 Wired Keyboard and Mouse Combo Quick Start Guide</p> <p>This quick start guide provides setup, usage instructions, and troubleshooting for the E-YOOSO CQ109 wired keyboard and mouse combo, including LED lighting modes, multimedia functions, and specifications.</p>
	<p>E-YOOSO X-45 3-Modes Wireless Mouse Quick Start Guide</p> <p>User manual for the E-YOOSO X-45, a versatile 3-modes wireless mouse supporting wired, 2.4GHz, and Bluetooth connectivity. Features ergonomic design, adjustable DPI, power-saving technology, and broad OS compatibility.</p>
	<p>E-YOOSO E-1141 2.4GHz Wireless Mouse Quick Start Guide</p> <p>Quick start guide for the E-YOOSO E-1141 2.4GHz wireless mouse, detailing product features, connection setup, button functions, advanced features, troubleshooting, safety guidelines, warranty, and compliance information.</p>
	<p>E-YOOSO X-39 Wired Gaming Mouse User Manual and Specifications</p> <p>Comprehensive user manual for the E-YOOSO X-39 wired gaming mouse, covering features, button functions, software setup, DPI settings, lighting customization, working conditions, troubleshooting, and environmental information.</p>