

Manuals+

[Q & A](#) | [Deep Search](#) | [Upload](#)

manuals.plus /

› [Amazon](#) /

› [Amazon Echo Buds User Manual](#)

Amazon Echo Buds (newest model)

Amazon Echo Buds User Manual

True Wireless Bluetooth 5.2 Earbuds with Alexa

INTRODUCTION

Welcome to the user manual for your new Amazon Echo Buds. These true wireless earbuds are designed to deliver rich, balanced sound with the convenience of hands-free Alexa. Featuring Bluetooth 5.2, audio personalization, multipoint pairing, and a long-lasting battery, Echo Buds are built for seamless integration into your daily life, whether for music, calls, or accessing information on the go.

echo buds

True wireless, rich, balanced sound



Image: Amazon Echo Buds in use, highlighting true wireless and balanced sound.

WHAT'S IN THE BOX

Your Amazon Echo Buds package includes the following items:

- Echo Buds (Glacier White)
- Charging Case
- 2 pairs of silicone earbud covers
- Quick Start Guide

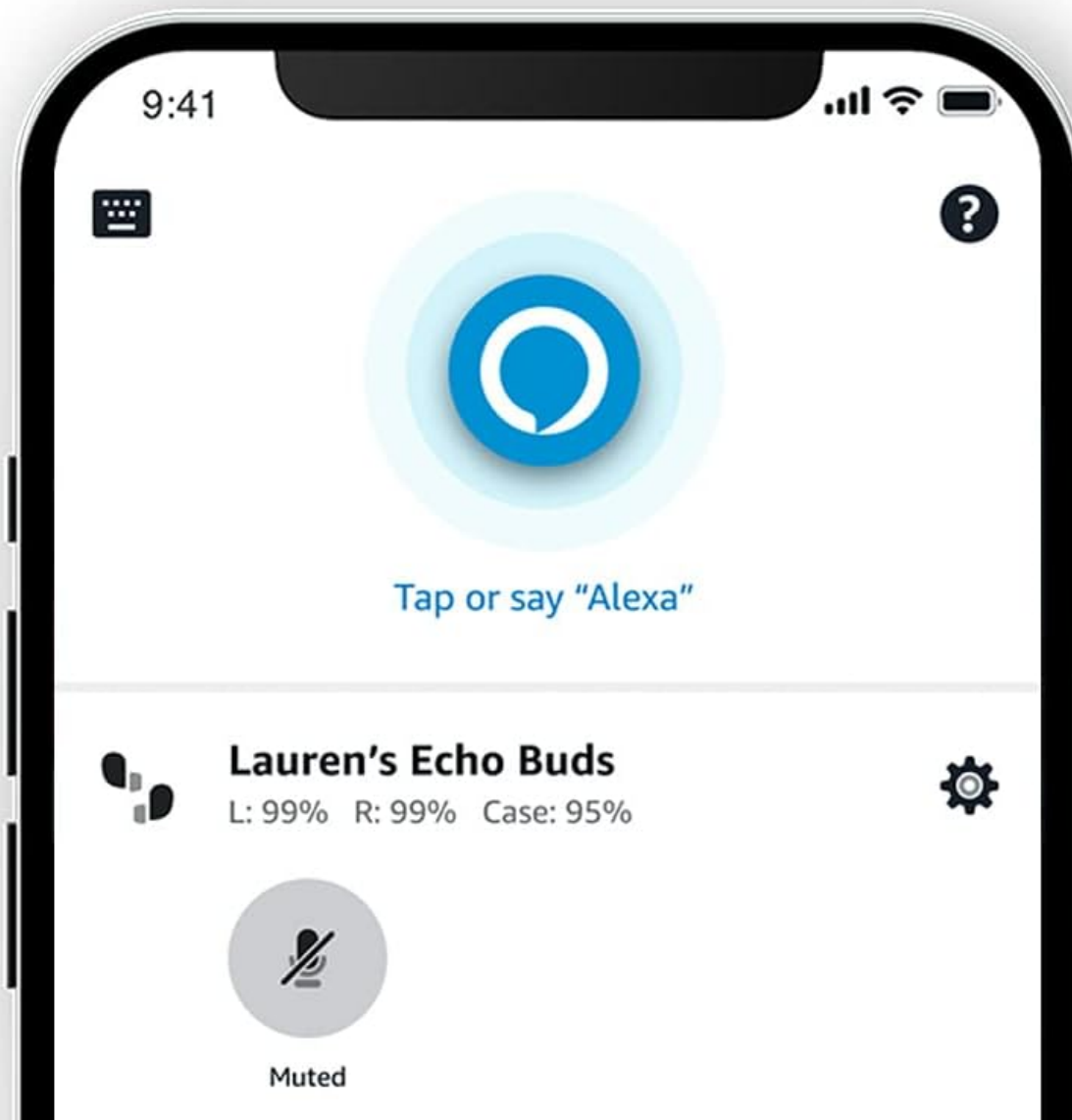


Includes Echo Buds, charging case,
and 2 pairs of silicone earbud covers.

Image: All components included with the Echo Buds: earbuds, charging case, and silicone covers.

SETUP

1. **Charge Your Echo Buds:** Before first use, place the Echo Buds into the charging case and connect the case to a power source using a USB-C cable (not included). The LED indicator on the case will show charging status.
2. **Download the Alexa App:** Install the Amazon Alexa app on your iOS or Android smartphone. The app is required for initial setup and to access all features.
3. **Pairing:** Open the charging case with the Echo Buds inside. The earbuds will enter pairing mode. Follow the instructions in the Alexa app to connect your Echo Buds to your device.
4. **Fit and Comfort:** Experiment with the included silicone earbud covers to find the most comfortable and secure fit. The semi-in-ear design is intended to rest gently in your ear.
5. **Customize Settings:** Use the Alexa app to personalize your audio experience, set up customizable tap controls for each earbud, and manage privacy settings like muting microphones.



Mute mics in the Alexa app

Image: The Alexa app interface, demonstrating how to mute microphones and view battery status.

OPERATING INSTRUCTIONS

Audio and Microphones

Echo Buds feature 12mm drivers for crisp audio and balanced bass. Two microphones and a voice detection accelerometer per earbud ensure clear communication during calls. The semi-in-ear design helps reduce outside noise while keeping you connected to your surroundings.

Alexa On-the-Go

With Alexa built-in, you can use your voice to control music, play podcasts, listen to Audible, make calls, set reminders, and more. Simply say "Alexa" followed by your command. Echo Buds are compatible with both iOS and Android devices

and support access to Siri and Google Assistant.

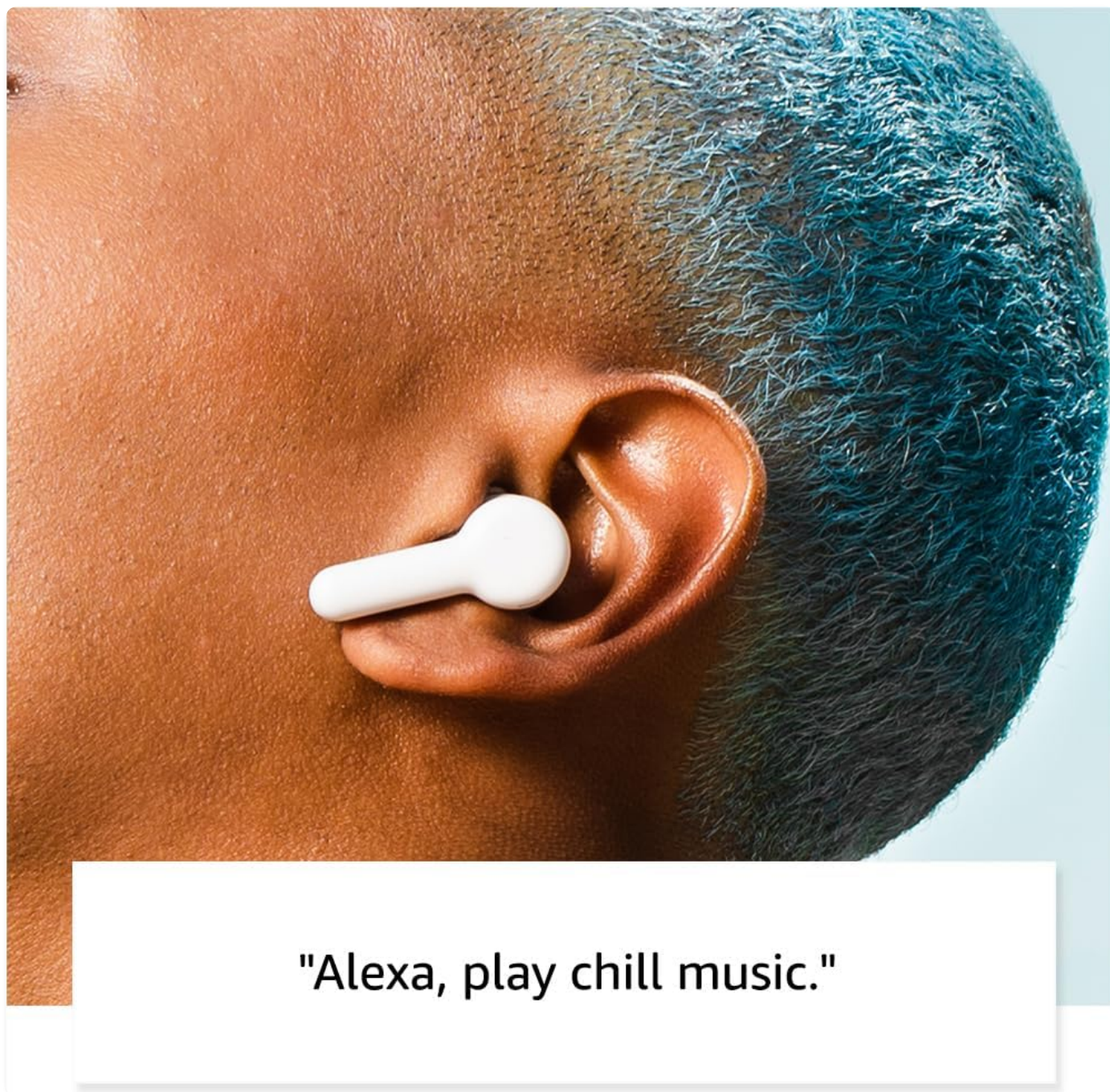
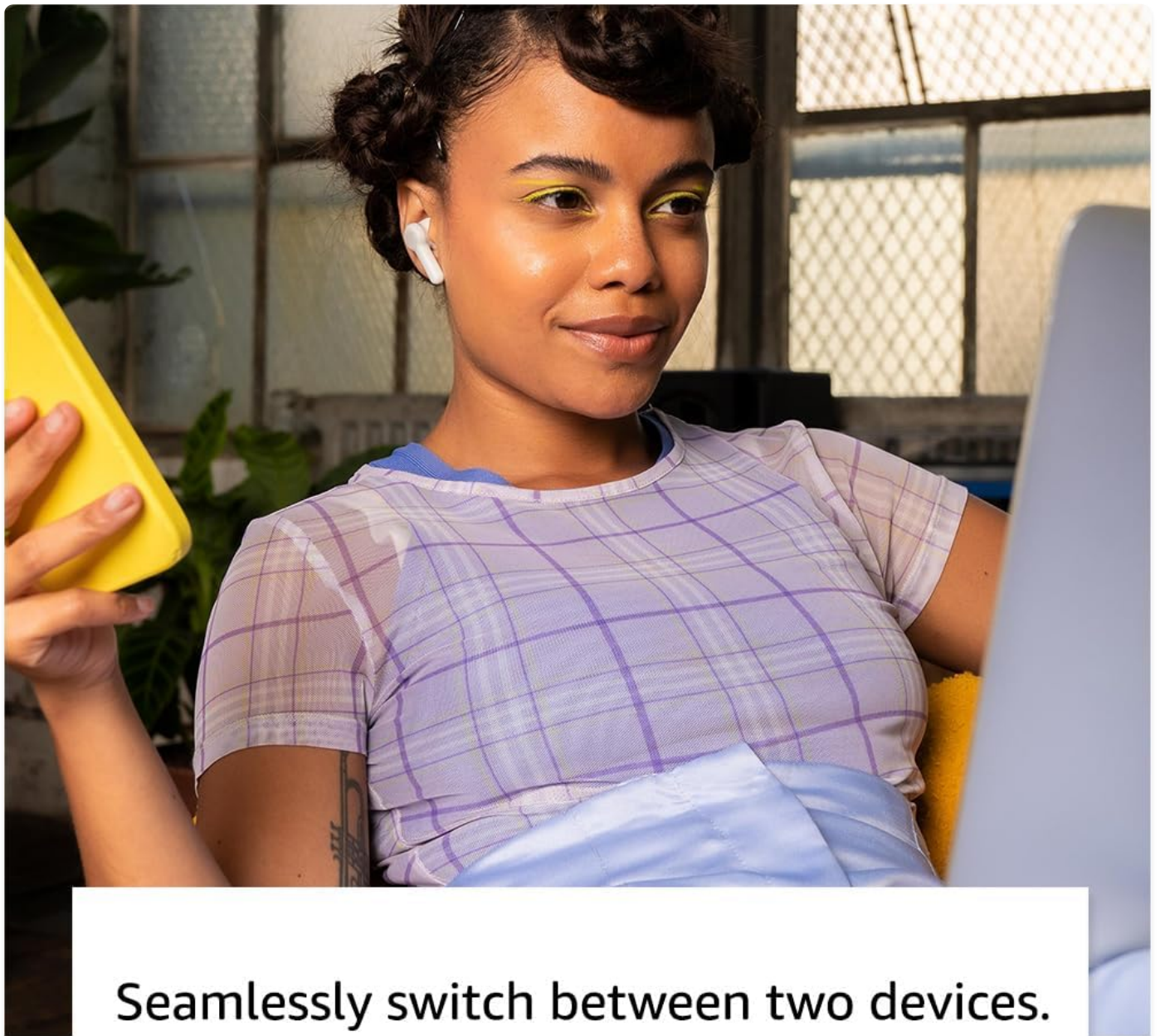


Image: Demonstrating voice commands with Alexa on Echo Buds.

Multipoint Pairing

Connect your Echo Buds to two devices simultaneously and seamlessly switch between them. For example, you can move from a video call on your laptop to music on your phone without needing to manually disconnect and reconnect.



Seamlessly switch between two devices.

Image: Echo Buds supporting seamless switching between two devices.

Battery Life and Charging

Enjoy up to 5 hours of music playback with Hands-Free Alexa enabled, or up to 6 hours without. The charging case provides up to 20 total hours of battery life. A quick 15-minute charge can provide up to 2 hours of music playback.



Up to 5 hours music playback per charge, 20 hours with charging case.

Image: Echo Buds and charging case, illustrating battery life.

Customizable Tap Controls

Configure tap controls for each earbud using the Alexa app. You can customize actions for single, double, and triple taps to control music playback, phone calls, mute microphones, and more.

MAINTENANCE

- **Cleaning:** Gently wipe the earbuds and charging case with a soft, dry, lint-free cloth. Avoid using abrasive materials or harsh chemicals.
- **Water Resistance:** The Echo Buds are IPX2 rated for sweat resistance. This means they are protected against dripping water when tilted at 15 degrees. They are not designed for submersion or use during swimming.
- **Storage:** When not in use, store your Echo Buds in their charging case to protect them and keep them charged.
- **Silicone Covers:** Periodically remove and clean the silicone earbud covers with a damp cloth to prevent buildup. Ensure they are completely dry before reattaching.

TROUBLESHOOTING

- **No Sound/Poor Sound Quality:**
 - Ensure Echo Buds are charged.
 - Check Bluetooth connection on your device.
 - Verify volume levels on both your device and the Echo Buds.
 - Clean any debris from the earbud speakers.
 - Adjust audio personalization settings in the Alexa app.
- **Connectivity Issues:**
 - Make sure Bluetooth is enabled on your device.
 - Ensure Echo Buds are within range of your device.
 - Try restarting your Echo Buds by placing them in the case and closing it for a few seconds, then reopening.
 - Forget the device in your phone's Bluetooth settings and re-pair.
- **Alexa Not Responding:**
 - Check your internet connection (Wi-Fi or mobile data).
 - Ensure the Alexa app is running and updated.
 - Verify that the microphones are not muted in the Alexa app.
- **Charging Problems:**
 - Ensure the USB-C cable and power adapter are working correctly.
 - Check for any debris in the charging port of the case.
 - Make sure the earbuds are properly seated in the charging case.

SPECIFICATIONS

Feature	Description
Design	Semi-in-ear design for comfort and environmental awareness.
Earbud Dimensions	33.9 x 19.1 x 17.7 mm
Case Dimensions	23.4 x 51 x 51 mm
Earbud Weight	5.0g
Case Weight	36.0g
Bluetooth Connectivity	Bluetooth 5.2 (HFP, A2DP, AVRCP, SPP, iPod Accessory Protocol)
Speakers/Microphones	12mm Driver + 2 mics + 1 Voice Accelerometer per earbud
Processor	Qualcomm S5 (QCC5171) Bluetooth System on Chip; Case MCU: ST Micro (STM32G0B1CEU6N)
Battery Life (Music Playback)	Up to 5 hours (with Hands-Free Alexa), up to 6 hours (without Hands-Free Alexa)

Feature	Description
Total Battery Life (with Case)	Up to 20 hours
Quick Charge	2 hours playback from 15-minute charge
IPX Rating	IPX2 (earbuds only) - sweat resistant
Device Compatibility	Requires Alexa app, compatible with Android 8.0+ and iOS 14+




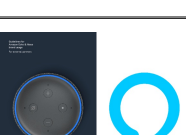
WARRANTY AND SUPPORT

Your Amazon Echo Buds come with a **1-year limited warranty and service**. This warranty covers defects in materials and workmanship under normal use. For detailed terms and conditions, please refer to the documentation included with your product or visit the official Amazon support website.

Optional extended warranties (1-year, 2-year, and 3-year) may be available for purchase separately in the U.S.

For technical support, troubleshooting assistance, or warranty claims, please contact Amazon Customer Service through the Alexa app or their official support channels.

Related Documents - Echo Buds (newest model)

	Amazon Echo Buds (2nd Gen) User Guide and Setup A comprehensive guide to setting up, fitting, and using your Amazon Echo Buds (2nd Gen), including tap controls, Alexa features, and troubleshooting.
	Amazon Echo Buds (2nd Gen) Quick Start Guide Get started with your Amazon Echo Buds (2nd Gen). This guide covers setup, personalized fit, tap controls, Alexa integration, privacy features, battery management, and connecting to other devices.
	Amazon Echo Buds (2nd Gen) Quick Start Guide A concise guide to setting up, personalizing, and using your Amazon Echo Buds (2nd Gen) with Alexa, including features like tap controls, battery status, and connecting to devices.
	Amazon Echo & Alexa Brand Usage Guidelines for External Partners Official guidelines for external partners on the proper usage of Amazon Echo and Alexa brand assets, including logos, typography, colors, and representation in marketing materials. Ensure brand consistency and integrity.



[Amazon Echo & Alexa Brand Usage Guidelines for Third-Party Marketers](#)

Comprehensive guidelines for third-party marketers on the correct usage of Amazon Echo and Alexa brand assets, including logos, voice, messaging, and product representation, to ensure brand consistency and integrity.



[Amazon Alexa for Business Administration Guide: Setup, Management, and Features](#)

This administration guide provides comprehensive instructions for setting up, managing, and utilizing Amazon Alexa for Business. It covers device management, user enrollment, skill integration, security, and troubleshooting for enterprise environments.