

idoooz S3

User Manual for idoooz Wireless Bluetooth MP3 Headphones

Model: S3

INTRODUCTION

Thank you for choosing the idoooz Wireless Bluetooth MP3 Headphones. This manual provides detailed instructions for setting up, operating, and maintaining your new device. Please read it carefully to ensure optimal performance and longevity of your headphones.

WHAT'S IN THE BOX

- 1x Mp3 Bluetooth earbud
- 1 x USB data cable
- 3 types of earplugs (large, medium, and small)
- 1 x User Manual
- 365-day long-term warranty.

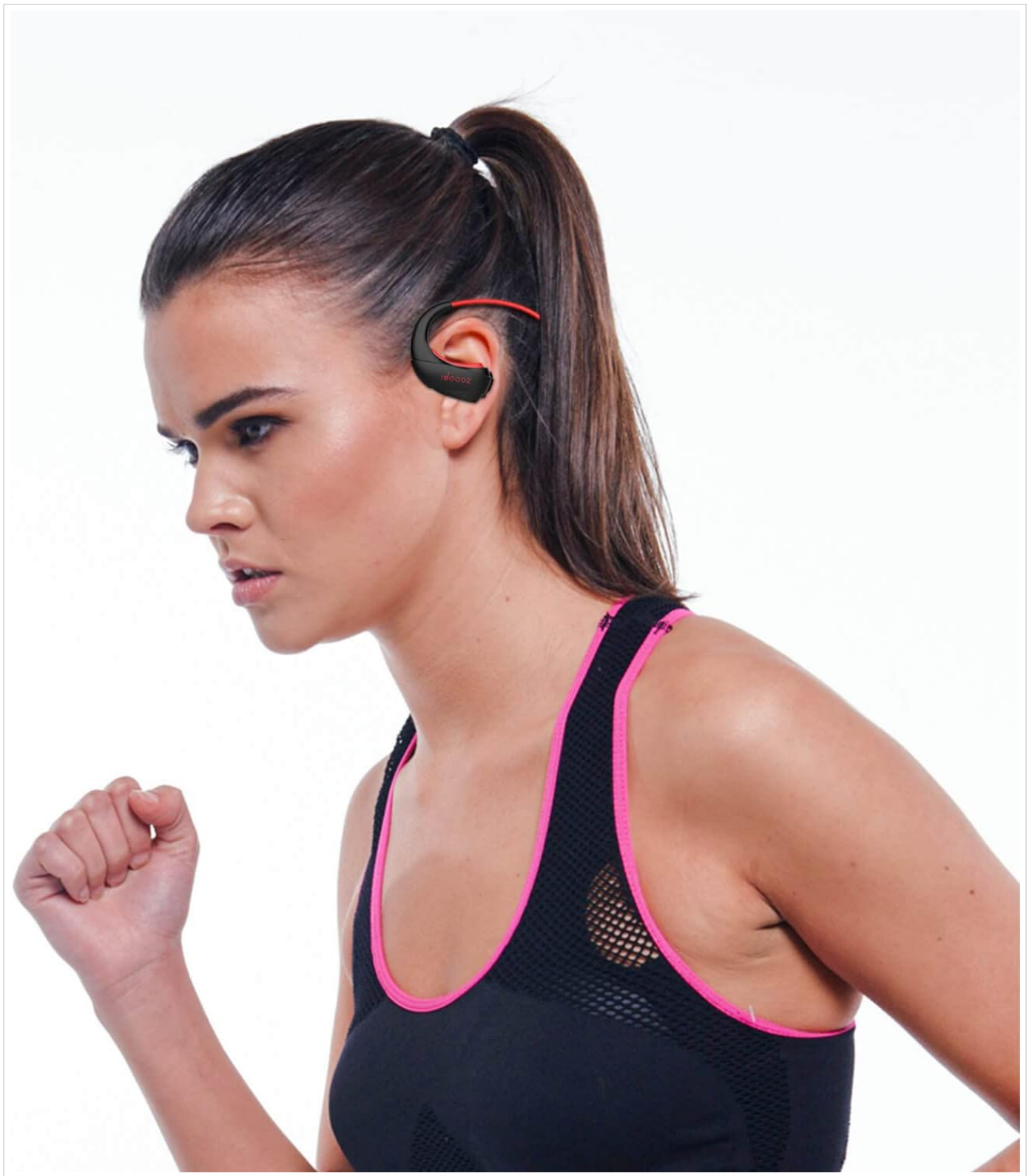


Figure 1: Package Contents. The image displays the idoooz headphones, a USB data cable, three pairs of earplugs in different sizes, and the user manual, all neatly arranged next to the product box.

PRODUCT OVERVIEW

Familiarize yourself with the various components and controls of your idoooz Wireless Bluetooth MP3 Headphones.



Figure 2: Headphone Controls and Ports. This diagram highlights the indicator light, on/off/play/pause button, switch memory/Bluetooth mode button, volume controls (long press for track navigation), and the data transfer/charging interface.

SETUP

Charging the Headphones

Before first use, fully charge your headphones. Connect the supplied USB data cable to the charging port on the headphones and plug the other end into a USB power source (e.g., computer USB port, USB wall adapter). The indicator light will show charging status and turn off when fully charged. A full charge typically takes about 90 minutes and provides approximately 5 hours of playback.

Transferring Music to Built-in Memory

The headphones feature 16GB of built-in memory, capable of storing over 4000 songs. To transfer music:

1. Connect the headphones to your computer using the USB data cable.
2. The headphones will appear as a removable disk drive on your computer.
3. Drag and drop your MP3, WMA, FLAC, or APE audio files directly into the root folder of the headphone's storage.

Note that there is no way to organize music by album or specific songs within the device's internal memory; playback will be sequential or shuffled depending on the device's default setting.

4. Safely eject the device from your computer before disconnecting the cable.

Fitting the Earphones

Select the earplugs (small, medium, or large) that provide the most comfortable and secure fit for your ears. The ergonomic design with flexible memory wire ensures a stable fit, ideal for sports and active use. The ear-mounted design fits close to the auricle without deeply compressing the ear canal.



Figure 3: Ergonomic Fit. A person is shown wearing the idooz headphones, demonstrating their secure and comfortable fit during physical activity.

OPERATING INSTRUCTIONS

Power On/Off and Play/Pause

- To **Power On/Off**: Press and hold the main button (power icon) for a few seconds.

- To **Play/Pause**: Short press the main button (power icon).

Volume Control and Track Navigation

- To **Increase Volume**: Short press the '+' button.
- To **Decrease Volume**: Short press the '-' button.
- To go to **Next Track**: Long press the '+' button for 2 seconds.
- To go to **Previous Track**: Long press the '-' button for 2 seconds.

Call Management

- To **Answer/Hang up a call**: Short press the main button (power icon).
- To **Redial last phone number**: Double click the main button (power icon).

Switching Between Memory Mode and Bluetooth Mode

The headphones support two modes: internal memory playback and Bluetooth streaming.

- To **Switch Modes**: Press the 'M' button.
- In **Memory Mode**: Music stored on the built-in 16GB memory will play directly.
- In **Bluetooth Mode**: The headphones will connect to your paired Bluetooth device (e.g., smartphone) for audio streaming and calls.

Bluetooth Pairing

To connect your idooz headphones to a Bluetooth-enabled device:

1. Ensure the headphones are powered on and in Bluetooth mode (light flashes).
2. On your smartphone or Bluetooth device, go to Settings and enable Bluetooth.
3. Search for available devices. The headphones will appear as "S3".
4. Select "S3" to connect. Once connected, you can play music or make calls through the headphones.



Video 1: Product Features and Bluetooth Connection Guide. This video demonstrates the various button functions (on/off, play/pause, volume, track skip, call management, mode switching) and provides a step-by-step guide on how to connect the headphones to a smartphone via Bluetooth.

MAINTENANCE

- **Cleaning**: Use a soft, dry cloth to clean the headphones. Do not use harsh chemicals or abrasive materials.
- **Storage**: When not in use, store the headphones in a cool, dry place, away from direct sunlight and extreme temperatures. The flexible memory wire allows for compact storage without tangling.
- **Water Resistance**: The headphones are sweatproof (IPX4 rated), making them suitable for workouts. However, they are not designed for submersion in water. Avoid exposing them to heavy rain or prolonged water contact.



Figure 4: Sweatproof Design. The image shows the headphones with water droplets, illustrating their resistance to sweat and light splashes, making them suitable for active use.



Figure 5: Compact and Portable. The headphones are shown folded in a hand, highlighting their flexible design and ease of portability.

TROUBLESHOOTING

Problem	Possible Cause	Solution
Headphones do not power on.	Low battery.	Charge the headphones fully using the provided USB cable.
Cannot connect via Bluetooth.	Headphones not in pairing mode; Bluetooth off on device; device out of range.	Ensure headphones are in Bluetooth mode (flashing light). Turn on Bluetooth on your device. Keep devices within 10 meters. Forget and re-pair the device if necessary.

Problem	Possible Cause	Solution
No sound from headphones.	Volume too low; incorrect mode; audio file format not supported.	Increase volume on headphones and connected device. Ensure correct mode (Memory or Bluetooth). Check if audio files are MP3/WMA/FLAC/APE.
Music transfer issues.	Improper connection; corrupted files.	Ensure USB cable is securely connected. Try a different USB port or cable. Verify audio file integrity.
Headphones uncomfortable or fall out.	Incorrect earplug size.	Try different sizes of earplugs (small, medium, large) included in the package to find the best fit.

SPECIFICATIONS


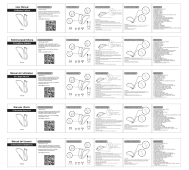
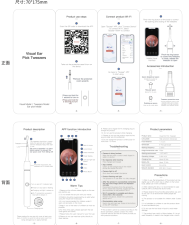
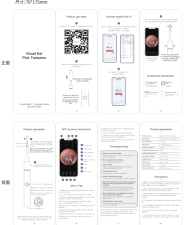


Feature	Detail
Brand	idoooz
Model Name	S3
Connectivity Technology	Wireless (Bluetooth 5.3)
Memory Storage Capacity	16 GB
Supported Audio Formats	MP3, WMA, FLAC, APE
Special Feature	Sweatproof (IPX4 rated)
Item Weight	3.52 ounces
Package Dimensions	6.1 x 5.35 x 1.65 inches
Manufacturer	Shenzhen shi hui sheng xing ke ji you xian gong si
Country of Origin	China

WARRANTY AND SUPPORT

Your idoooz Wireless Bluetooth MP3 Headphones come with a 365-day long-term warranty from the date of purchase. This warranty covers manufacturing defects and ensures your product is free from material and workmanship flaws under normal use.

For any questions, technical support, or warranty claims, please contact our friendly customer service team. Refer to the contact information provided on the product packaging or the official idoooz website.



	<p>S3 Open-Ear Headphones User Manual</p> <p>Comprehensive user manual for the S3 Open-Ear Headphones, detailing product features, specifications, setup, operation, charging, troubleshooting, and warranty information.</p>
	<p>S3 Wireless Earbuds User Manual</p> <p>User manual for S3 Wireless Earbuds, covering product description, multi-functional button operations, usage tips, connection, charging, specifications, and warranty activation in multiple languages.</p>
	<p>Soulear Visual Ear Pick Tweezers User Manual and Guide</p> <p>User manual for the Soulear Visual Ear Pick Tweezers, detailing product setup, Wi-Fi connection, app functions, troubleshooting steps, technical specifications, and safety precautions for effective and safe ear cleaning.</p>
	<p>Soulear Visual Ear Pick Tweezers User Manual</p> <p>Comprehensive user manual for the Soulear Visual Ear Pick Tweezers, detailing setup, Wi-Fi connection, app usage, troubleshooting, product parameters, and safety precautions for this digital otoscope ear cleaning tool.</p>
	<p>Bowers & Wilkins Px7 S3 Wireless Headphones User Manual</p> <p>Explore the Bowers & Wilkins Px7 S3 wireless over-ear headphones. This user manual provides comprehensive guidance on setup, features like Active Noise Cancellation and Bluetooth, operation, troubleshooting, and care for an optimal audio experience.</p>
	<p>Bowers & Wilkins Px7 S3 Noise Cancelling Wireless Headphones User Guide</p> <p>Comprehensive guide to the Bowers & Wilkins Px7 S3 over-ear wireless headphones, covering setup, features like Active Noise Cancellation and Ambient Pass-Through, Bluetooth pairing, app integration, and technical specifications.</p>