

## Kewig Z8-D

# Kewig Dual USB Port Car Charger Instruction Manual

Model: Z8-D

[Introduction](#)   [Safety Information](#)   [Package Contents](#)   [Features](#)   [Setup](#)   [Operation](#)  
[Specifications](#)   [Troubleshooting](#)   [Maintenance](#)   [Warranty & Support](#)

## 1. INTRODUCTION

Thank you for choosing the Kewig Dual USB Port Car Charger. This device is designed to provide efficient and safe charging for your mobile devices while on the go. It features dual USB ports, a touch switch for power control, and a blue LED indicator for convenience.

This manual provides essential information for the proper installation, operation, and maintenance of your car charger. Please read it thoroughly before use and retain it for future reference.

## 2. SAFETY INFORMATION

To ensure safe operation and prevent damage to the device or your vehicle, please observe the following safety guidelines:

- Do not disassemble, modify, or repair the charger yourself. Unauthorized modifications may void the warranty and pose safety risks.
- Avoid exposing the charger to extreme temperatures, direct sunlight, or moisture.
- Ensure the charger is securely inserted into the cigarette lighter socket to prevent intermittent connections or overheating.
- Use only compatible charging cables with your devices.
- The charger is equipped with multiple protection features against over-current, overcharging, over-temperature, and short-circuiting. However, always monitor charging devices.
- Keep out of reach of children.



Figure 2.1: Multi-Protection Features

### 3. PACKAGE CONTENTS

---

Please verify that all items are present in your package:

- 2 x Kewig Dual USB Port Car Charger
- 2 x USB Cable (Note: These are generic USB cables, specific device cables may be required for optimal charging.)

### 4. PRODUCT FEATURES

---

The Kewig Dual USB Port Car Charger offers the following key features:

- **Dual USB Ports:** Simultaneously charge two devices with a total output of up to 5V/4.8A (2.4A per port).
- **Fast Charging:** Each port delivers up to 5V/2.4A, allowing for efficient charging of compatible devices.
- **Touch Switch:** An integrated touch-sensitive button controls the power to the USB ports and the blue LED light.
- **Blue LED Indicator:** Provides visual confirmation when the charger is powered on and operating.
- **Universal Compatibility:** Compatible with a wide range of Android and iOS mobile devices, tablets, and other USB-powered gadgets.
- **Advanced Safety Protections:** Built-in safeguards against over-current, overcharging, over-temperature, and short-circuiting.
- **Durable Construction:** Made from ABS+PC fireproof material for enhanced safety and longevity.



Figure 4.1: Kewig Dual USB Port Car Chargers

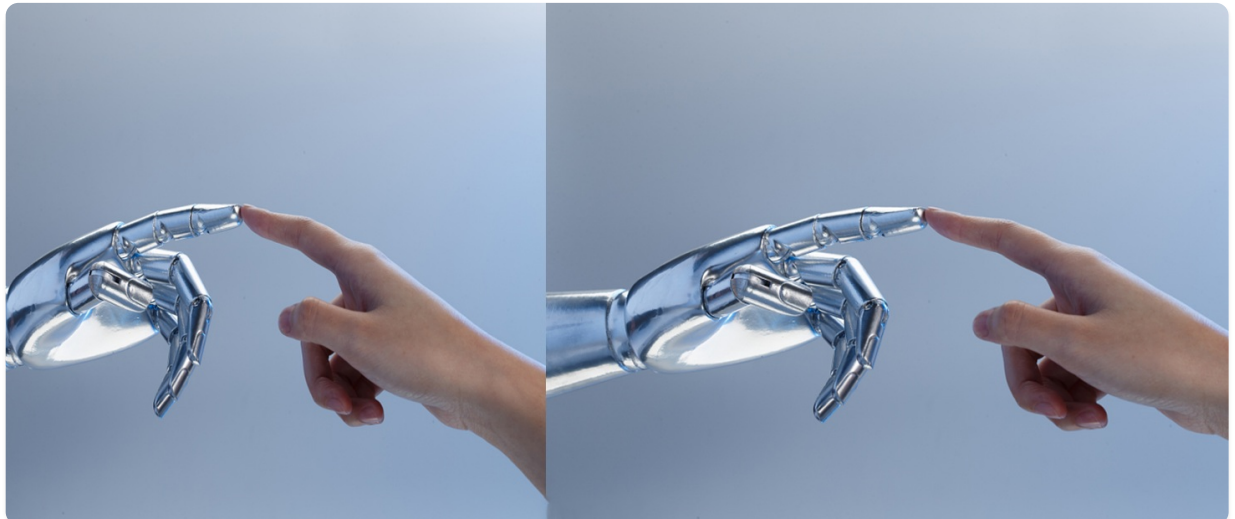


Figure 4.2: Key Features and Compatibility

## 5. SETUP AND INSTALLATION

Installing the Kewig Dual USB Port Car Charger is straightforward:

1. Locate your vehicle's 12V/24V cigarette lighter socket. This is typically found in the dashboard or center console.
2. Ensure the vehicle's engine is off or the ignition is in the 'ACC' (Accessory) position, depending on your vehicle's power configuration for the socket.
3. Insert the Kewig car charger firmly into the cigarette lighter socket. You should feel a secure connection.
4. Once inserted, the blue LED light on the charger will illuminate, indicating it is receiving power and ready for use. If the LED does not light up, gently press the touch switch on the charger's face.



Figure 5.1: Charger Installed in Vehicle Socket

## 6. OPERATING INSTRUCTIONS

---

Using your Kewig car charger to power and charge your devices:

1. **Power On/Off:** The charger features a touch switch on its face. A light touch will toggle the power to the USB ports and the blue LED indicator on or off. When the LED is lit, the charger is active.
2. **Connect Devices:** Plug your device's USB charging cable into one of the two available USB ports on the car charger.
3. **Begin Charging:** Connect the other end of the cable to your mobile device. Charging will begin automatically. The blue LED will remain lit while the charger is active.
4. **Dual Device Charging:** You can charge two devices simultaneously. The charger will distribute power up to a maximum of 2.4A per port, with a total output of 4.8A.
5. **Disconnecting:** Once your device is charged, or when you are finished using the charger, disconnect the USB cable from your device and the charger. You may also turn off the charger using the touch switch.



Figure 6.1: Charging Two Devices Simultaneously



## LED LIGHTING



Figure 6.2: LED Lighting and Touch Switch

## 7. SPECIFICATIONS

| Feature          | Detail                                   |
|------------------|--|
| Model Number     | Z8-D                                     |
| Input Voltage    | DC 12V-24V                               |
| Total USB Ports  | 2  |
| Total Output     | 5V/4.8A (Max, when dual ports charging)  |
| Each Port Output | 5V/2.4A (Max, when single port charging) |

| Feature            | Detail                          |
|--------------------|---------------------------------|
| Amperage           | 4.8 Amps                        |
| Special Feature    | Blue LED light and touch switch |
| Material           | ABS+PC Fireproof Material       |
| Color              | Black                           |
| Item Weight        | 0.176 ounces                    |
| Package Dimensions | 3.11 x 2.36 x 1.54 inches       |



Figure 7.1: Product Dimensions and Electrical Specifications

## 8. TROUBLESHOOTING

If you encounter issues with your Kewig car charger, refer to the following common problems and solutions:

| Problem                           | Possible Cause   | Solution  |
|-----------------------------------|--|---|
| Charger not powering on (LED off) | <ol style="list-style-type: none"><li>1. Not properly inserted into socket.</li><li>2. Vehicle's cigarette lighter socket is not receiving power.</li><li>3. Touch switch is off.</li></ol>                  | <ol style="list-style-type: none"><li>1. Re-insert the charger firmly.</li><li>2. Check vehicle's fuse for the cigarette lighter socket. Test with another device if possible.</li><li>3. Lightly touch the switch on the charger's face to turn it on.</li></ol>   |
| Device not charging               | <ol style="list-style-type: none"><li>1. Charger is off.</li><li>2. Faulty USB cable.</li><li>3. Device is not compatible or has specific charging requirements.</li><li>4. Charger is overloaded.</li></ol> | <ol style="list-style-type: none"><li>1. Ensure the charger's LED is lit (touch switch to activate).</li><li>2. Try a different USB cable.</li><li>3. Verify device compatibility. Some devices require specific charging protocols not supported by all chargers.</li><li>4. Disconnect one device to see if the other charges.</li></ol>                |
| Slow charging speed               | <ol style="list-style-type: none"><li>1. Using a low-quality or long USB cable.</li><li>2. Device requires higher amperage than supplied.</li><li>3. Charging two devices simultaneously.</li></ol>          | <ol style="list-style-type: none"><li>1. Use a high-quality, shorter USB cable.</li><li>2. While the charger provides 2.4A per port, some devices (e.g., certain tablets) may charge faster with higher output chargers.</li><li>3. Charging two devices splits the total available power. Try charging one device at a time for maximum speed.</li></ol> |
| Charger gets warm during use      | Normal operation, especially when charging multiple devices.   | This is generally normal. If it becomes excessively hot or emits smoke/odor, immediately disconnect it and cease use.   |

## 9. MAINTENANCE

To ensure the longevity and optimal performance of your car charger:

- **Cleaning:** Use a soft, dry cloth to wipe the exterior of the charger. Do not use liquid cleaners or abrasive materials.
- **Storage:** When not in use for extended periods, store the charger in a cool, dry place away from direct sunlight and extreme temperatures.
- **Avoid Physical Damage:** Do not drop the charger or subject it to strong impacts.
- **Inspect Regularly:** Periodically check the charger for any signs of damage, such as cracks or loose connections.

## 10. WARRANTY AND CUSTOMER SUPPORT

Your Kewig Dual USB Port Car Charger comes with a manufacturer's warranty. For specific warranty terms and conditions, please refer to the product packaging or the retailer's policy at the time of purchase. Should you have any questions, concerns, or require assistance with your USB car adapter purchase, please contact our customer service team. We are committed to providing friendly and effective support to resolve any issues you may encounter.

### Contact Information:

- For support, please email the store directly where you purchased the product.

- You may also visit the official Kewig store on Amazon for more information:[Kewig Amazon Store](#)

© 2025 Kewig. All rights reserved.