



Manuals.plus /

› Solofish /

› SOLOFISH 500lm Pistol Light and Blue & Green Laser Beam Combo (Model SL-1039) Instruction Manual

Solofish SL-1039

SOLOFISH 500lm Pistol Light and Blue & Green Laser Beam Combo Instruction Manual

Model: SL-1039 | Brand: Solofish

1. PRODUCT OVERVIEW

The SOLOFISH 500lm Pistol Light and Blue & Green Laser Beam Combo (Model SL-1039) is a compact and lightweight accessory designed for firearms with a Picatinny rail. Constructed from durable aluminum alloy, this device integrates a 500-lumen flashlight with both blue and green laser sights. It features multiple tactical modes, including steady/strobe light, laser-only, and combined light and laser modes. The unit is rechargeable via a USB cable and includes an adjustable rail system for optimal positioning. This manual provides essential information for safe and effective use.

2. SAFETY INFORMATION

- **Laser Safety:** This product contains Class IIIA lasers (<5mW). Avoid direct eye exposure to the laser beam. Do not aim the laser at aircraft or vehicles.
- **General Safety:** Always ensure your firearm is unloaded and safe before installing or adjusting the light/laser combo. Follow all local and federal regulations regarding firearm accessories.
- **Charging:** Use only the provided charging cable. Do not attempt to disassemble the internal battery.

3. WHAT'S IN THE BOX

- 500 Lumens Aluminum Flashlight Laser Combo (1 unit)
- Charging Cable (1 unit)
- Adjustment Tooling (2 units)
- Spare Screw (1 unit)
- User Manual (1 unit)

4. SETUP AND INSTALLATION

4.1 Rail Compatibility and Installation Space

Before installation, ensure your firearm's rail meets the following two requirements:

1. **21mm Picatinny Rail with Slot:** The rail must be a standard 21mm Picatinny rail and include a cross slot.
2. **Minimum 0.96 inch Installation Space:** There must be at least 0.96 inches of clear space from the rail's slot to the trigger guard.

Make sure your pistol meet below TWO requirements:

- (1) 21mm Picatinny with slot
- (2) ≥ 0.96 inch installation space: slot---trigger guard



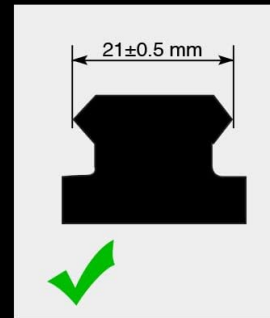
1. Picatinny with Multi-Slots



2. Picatinny with One-Slot



3. Picatinny on Rifle



4. Standard Picatinny

NOT fit for pistols as below:



1. No Rail



2. Not Pica-tinny



3. NO SLOT



4. No Enough Space

Image: Detailed diagram illustrating the required 21mm Picatinny rail with a slot and the minimum 0.96-inch installation space from the slot to the trigger guard. It also shows examples of incompatible setups, such as rails with no slot or insufficient space.

This light/laser combo is not suitable for sub-compact firearms that do not meet these specifications.

Your browser does not support the video tag.

Video: A short demonstration explaining the compatibility requirements for the pistol light, specifically highlighting that it is not suitable for sub-compact models.

4.2 Mounting the Unit

The unit is designed for easy installation with a single screw mechanism. It features an adjustable rail system allowing you to slide the unit forward or backward to achieve the best position on your firearm's Picatinny rail.

Only one screw, Easy to install

21 mm Picatinny with Slot

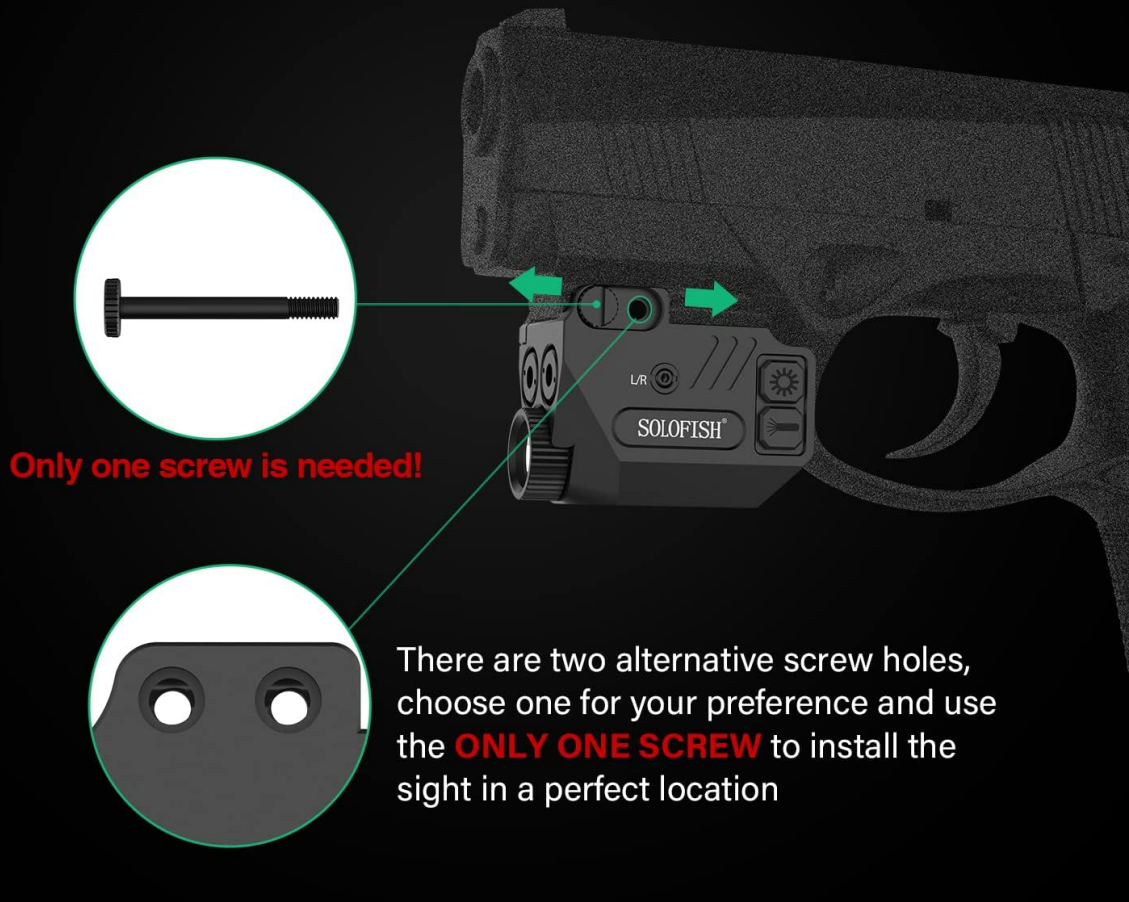


Image: Illustration demonstrating the simple single-screw installation process for attaching the light/laser combo to a 21mm Picatinny rail. It also shows two alternative screw holes for preferred positioning.

4.3 Adjusting the Laser Sight

To adjust the laser's elevation and windage, use the provided adjustment tools. It is crucial to tune the elevation and windage interactively. Adjusting only one direction excessively may damage the internal threads.

How to Adjust the Laser?

*Please slowly tune Elevation and Windage **interactively**.
Only one direction **may lock** or damage the the threads.*

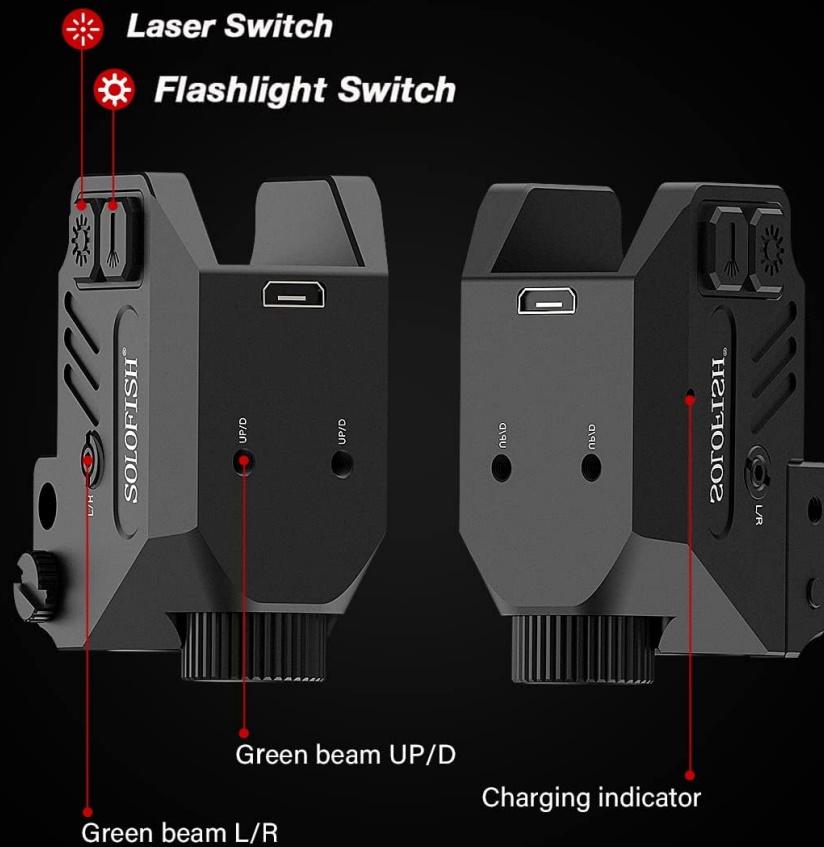


Image: Diagram indicating the adjustment points for the green laser's elevation (UP/D) and windage (L/R) using the provided tools. It emphasizes interactive adjustment to prevent thread damage.

5. OPERATING INSTRUCTIONS

5.1 Multiple Tactical Modes

The SOLOFISH light/laser combo offers various operating modes for different tactical situations. The ambidextrous buttons allow for easy activation and mode switching.

- **Steady/Strobe Gun Light:** Press the flashlight button once for steady light. Press and hold the flashlight button for 3 seconds to activate strobe mode.
- **Pistol Laser Only:** Press the right button for the green laser, or the left button for the blue laser.
- **Steady/Strobe Flashlight + Gun Laser:** Activate the desired laser and then activate the flashlight.

Multi Tactical Modes



Steady
White light



Strobe
White light



Blue
light only



Green
light only



Blue laser &
Flashlight



Green laser &
Flashlight



1. Green Laser Mode: Press the right button
2. Blue Laser Mode: Press the left button.
3. Steady Flashlight Mode: Press once the flashlight button.
4. Strobe Flashlight Mode On/Off: Press and hold the flashlight button for 3 seconds.

Image: Visual guide to the various tactical modes available, including steady and strobe white light, individual blue and green laser modes, and combined light and laser functions.

Your browser does not support the video tag.

Video: A demonstration of the SOLOFISH 500 Lumens Pistol Laser Light Combo, showcasing its various light and laser modes and overall functionality.

5.2 Charging the Unit

The light/laser combo is equipped with a built-in rechargeable battery. A full charge typically takes 1.5 hours using the provided USB cable. The power indicator light will show red when charging or when the battery is low, and green when fully charged.

- **Battery Life:** Approximately 5 hours for laser only, 1 hour for tactical flashlight only, or 45 minutes for combined gun light and laser sights.

8hr/laser,
1hr/Flashlight
45min / laser & Flashlight



USB charging



Red Light In Charging or Low Power



Green Light Full Charging

Image: Illustration detailing the USB charging process and the meaning of the power indicator light: red for charging or low battery, and green for a full charge.

6. MAINTENANCE

- **Cleaning:** Use a soft, dry cloth to clean the exterior of the unit. Do not use harsh chemicals or abrasive materials.
- **Storage:** Store the unit in a cool, dry place away from direct sunlight and extreme temperatures.
- **Battery Care:** For optimal battery life, avoid fully discharging the unit frequently. Charge the unit regularly, even if not in use, to maintain battery health.

7. TROUBLESHOOTING

- **Unit Not Turning On:** Ensure the unit is fully charged. Check the charging indicator light.
- **Laser Not Visible/Weak:** Verify the unit is charged. Ensure the laser aperture is clean and unobstructed.
- **Light Not Working:** Check battery level. Ensure the light emitter is clean.
- **Difficulty Adjusting Laser:** Ensure you are using the correct adjustment tools. Adjust elevation and windage interactively to prevent thread damage.

8. SPECIFICATIONS

Brand	Solofish
Model Name	SL-1039
Part Number	RGB-30
Color	Blue & Green Laser Light Combo
Material	Aluminum
Item Weight	75 Grams
Product Dimensions (LxWxH)	1.45" x 1.09" x 1.45"
Mounting Type	Picatinny Mount
Compatible Devices	Handgun, Rifle, Shotgun
Laser Output	Class IIIA, <5mW
Flashlight Output	500 Lumens
Rechargeable	Yes (USB)

Aircraft grade aluminum alloy

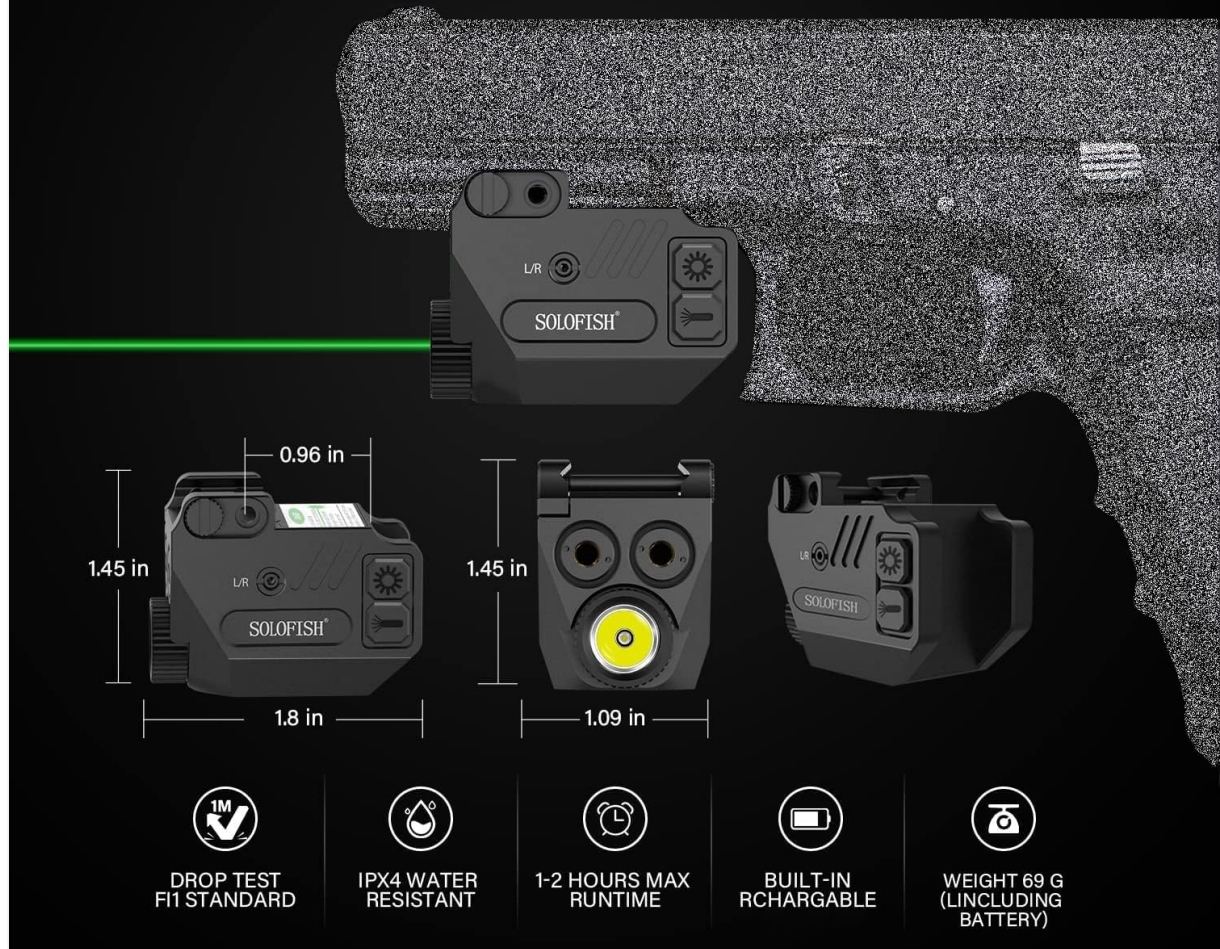


Image: Detailed view of the light/laser combo highlighting its compact dimensions (1.45"L x 1.09"W x 1.45"H), weight (69g/2.43 oz), IPX4 water resistance, 1-2 hours max runtime, and built-in rechargeable battery.

9. WARRANTY

This product comes with a 1-year warranty from the date of purchase. Please retain your proof of purchase for warranty claims. The warranty covers manufacturing defects but does not cover damage due to misuse, accident, or unauthorized modification.

10. SUPPORT

For further assistance, technical support, or warranty inquiries, please contact Solofish customer service through the retailer where the product was purchased or visit the official Solofish website.