

JINXIA jinxia2021

JINXIA Baby Playpen Set User Manual

Model: jinxia2021 | Brand: JINXIA

1. IMPORTANT SAFETY INFORMATION

Please read and understand all instructions and warnings before assembling and using the JINXIA Baby Playpen. Failure to follow these instructions could result in serious injury or death. Retain this manual for future reference.

- **Parental supervision is required at all times.** Never leave a child unattended in the playpen.
- **Stab Hazard:** Products may have sharp points if destroyed. Adult supervision is required during use.
- **Small Objects:** This product contains small objects that must be assembled by adults. Keep small parts away from children before and during assembly.
- **Suffocation Warning:** This plastic bag is not a toy. To avoid danger of suffocation, keep this plastic bag away from babies and children.
- **Strangulation Hazard:** Strings can cause strangulation. Never place items with a string around a child's neck (e.g., hood strings, pacifier cords). Never suspend strings over the product or attach strings to toys.
- **Discontinue Use:** Stop using the product when the child is able to climb out or reaches a height of 35 inches (890 mm).
- **Entrapment Risk:** Child can become entrapped and die if improvised netting or covers are placed on top of the product. Never add such items to confine a child.
- **Climbing Hazard:** When the child is able to pull to a standing position, remove bumper pads, large toys, and other objects that could serve as steps for climbing out.
- **Window Placement:** Never place the product near a window where cords from blinds or drapes can strangle a child.
- **Product Integrity:** Never use this product if there are any loose or missing fasteners, loose joints, broken parts, or torn mesh/fabric. Check before assembly and periodically during use. Contact JINXIA for replacement parts. Never substitute parts.

2. PRODUCT OVERVIEW

The JINXIA Baby Playpen Set provides a safe and spacious environment for babies and toddlers to play, both indoors and outdoors. It features a large area, durable construction, and includes several accessories for enhanced play and convenience.

Included Components:

- Playpen Fabric Enclosure
- Stainless Steel Poles and Connectors
- Anti-Slip Suction Cups (4)
- King Size Folding Play Mat
- Ocean Balls (30)
- Net Basket (1)
- Handle Rings (4)
- Hanging Accessory Bag (1)
- Oversized Organizer/Storage Bag (1)



Figure 2.1: The complete JINXIA Baby Playpen Set, showcasing the large play area with a child inside, surrounded by

various included accessories such as colorful ocean balls, a net basket, handle rings, a play mat, and storage bags.



Figure 2.2: All the individual components that make up the JINXIA Baby Playpen Set, including the fabric enclosure, metal poles, connectors, suction cups, and various accessories like the play mat, handle rings, and storage bags, providing a comprehensive view of what is in the box.

3. SETUP AND ASSEMBLY

The JINXIA Baby Playpen is designed for straightforward assembly. Follow these general steps to set up your playpen:

1. Unpack all components and verify that all parts listed in Section 2 are present.
2. Connect the stainless steel poles using the provided connectors to form the frame of the playpen. Ensure all connections are secure.
3. Slide the fabric enclosure over the assembled frame, ensuring it fits snugly and all corners are aligned.
4. Attach the anti-slip suction cups to the bottom of the playpen frame. Press down firmly to ensure they adhere to a smooth floor surface, preventing sliding.
5. Place the folding play mat inside the playpen.
6. Attach the hanging accessory bag and oversized organizer to the playpen frame as desired. Ensure the support plate is correctly inserted into the hanging accessory bag for stability (refer to Figure 3.1).

7. Distribute the ocean balls, net basket, and handle rings for your child's entertainment.

There is a support plate inside to make it more flat and better support



Figure 3.1: This diagram demonstrates the correct way to insert the support plate into the hanging accessory bag, ensuring it remains flat and provides better support for items stored within.

4. OPERATION

Once assembled, the JINXIA Baby Playpen provides a secure and engaging space for your child.

- **Access:** The playpen features a zippered door for easy entry and exit for both children and adults. Ensure the zipper is fully closed when the child is inside to prevent unsupervised exit.
- **Visibility:** Visible ventilation nets on all sides allow adults to observe the baby's movements from any angle, ensuring continuous monitoring.
- **Stability:** The 4 anti-skid suction cups under the fence columns prevent the playpen from sliding or tipping over on smooth surfaces.
- **Play Area:** The 75in x 59in oversized area provides ample space for your baby to play, crawl, and explore safely. It can comfortably accommodate multiple children and adults.
- **Accessories:** Utilize the included ocean balls, net basket, and handle rings to enhance your child's playtime. The hanging accessory bag and organizer provide convenient storage for essentials.



Figure 4.1: A baby crawling and playing happily inside the JINXIA Baby Playpen, emphasizing the product's design for safe play and the 360-degree visibility provided by the mesh sides, allowing parents to easily monitor their child.

5. CLEANING AND MAINTENANCE

Regular cleaning and maintenance will ensure the longevity and hygiene of your JINXIA Baby Playpen.

- **Fabric Components:** The fence fabric, storage bag, and play mat are machine-washable and hand-washable. They are designed not to shrink or fade after washing. Use a mild detergent and cold water.
- **Spills on Mat:** The soft mat is designed to quickly absorb liquids, preventing contamination. For minor spills, wipe immediately with a damp cloth.
- **Frame:** Wipe down the stainless steel frame and plastic connectors with a damp cloth and mild soap as needed. Dry thoroughly.
- **Inspection:** Periodically inspect all parts for wear, damage, or loose connections. Refer to Section 1 for safety warnings regarding damaged parts.

6. TROUBLESHOOTING

This section addresses common concerns you might encounter with your JINXIA Baby Playpen.

- **Playpen feels unstable:** Ensure all pole connections are fully inserted and secure. Verify that the anti-slip suction cups are firmly pressed onto a clean, smooth floor surface.
- **Fabric tearing:** The fabric is made of thicker material to prevent tearing. If you experience any fabric damage, discontinue use immediately and contact customer support for assistance.
- **Zipper sticking or falling off:** The zipper is made of high-strength composite material for durability. If issues occur, ensure the zipper path is clear of fabric obstructions. If the problem persists, contact customer support.
- **Child attempting to climb out:** As per safety warnings, discontinue use if the child is able to climb out or reaches 35 inches in height. Remove any objects that could aid climbing.
- **Missing or damaged parts:** Do not use the playpen if any parts are missing or damaged. Contact JINXIA customer support for replacement parts. Do not substitute parts.

7. SPECIFICATIONS

Feature	Specification
Model Number	jinxia2021
Product Dimensions (L x W x H)	190 x 150 x 68 cm (75 x 59 x 27 inches)
Item Weight	7.26 kg (16 lbs)
Manufacturer's Suggested Maximum Weight	20.41 kg (45 lbs)
Material Type	Stainless Steel, Polyester, Plastic, Cotton
Color	Silver gray
Care Instructions	Machine Washable
Folded Size (estimated)	~24 inches (L) x 12 inches (W) x 6 inches (H)
Floor Area	38.04 Square Feet

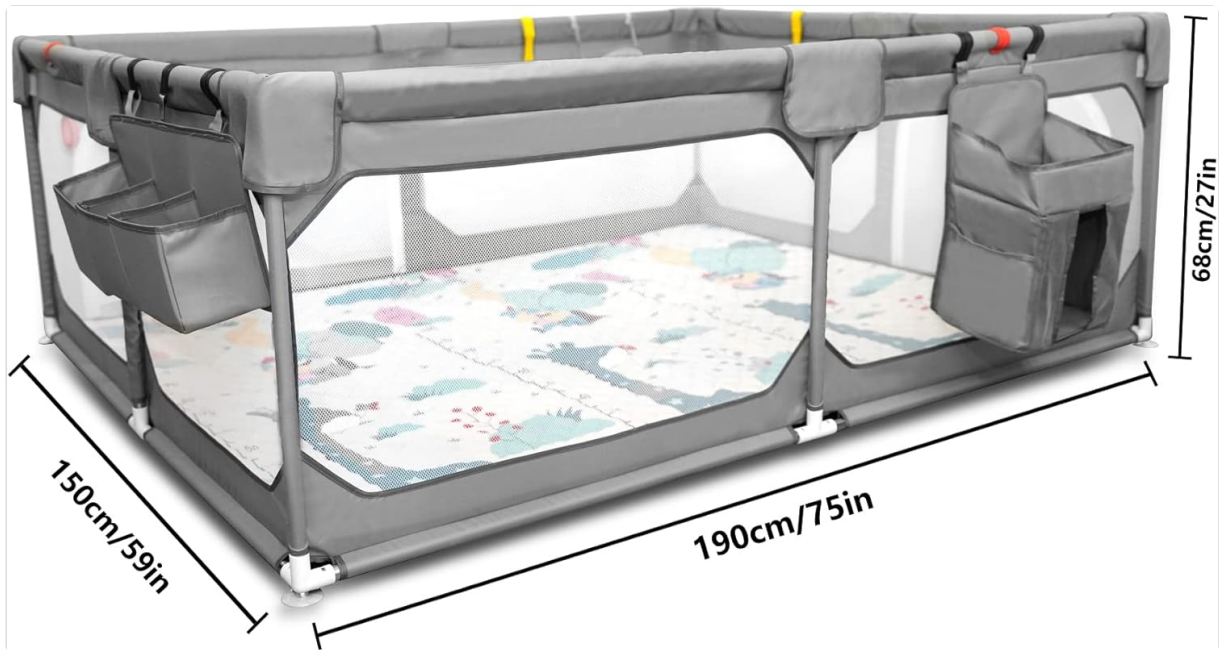
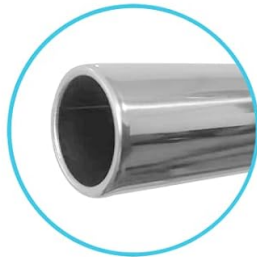
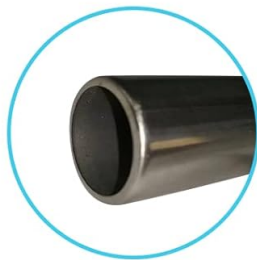


Figure 7.1: This image provides a clear view of the JINXIA Baby Playpen's dimensions, indicating its length of 190cm/75in, width of 150cm/59in, and height of 68cm/27in, offering a visual guide to its size.

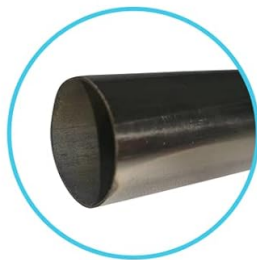
COMPARED



OUR



OTHER'S



OTHER'S



Figure 7.2: This image visually compares the robust stainless steel tubing used in the JINXIA Baby Playpen (labeled 'OUR') with inferior materials used in other products (labeled 'OTHER'S'), illustrating the enhanced durability and strength of the JINXIA playpen's construction.

8. SUPPORT

For any questions, concerns, or assistance with your JINXIA Baby Playpen, please contact our customer support. We aim to reply within 24 hours.

Please refer to your purchase documentation or the retailer's website for specific contact details.

© 2023 JINXIA. All rights reserved.