

## Schaerer 3370061685

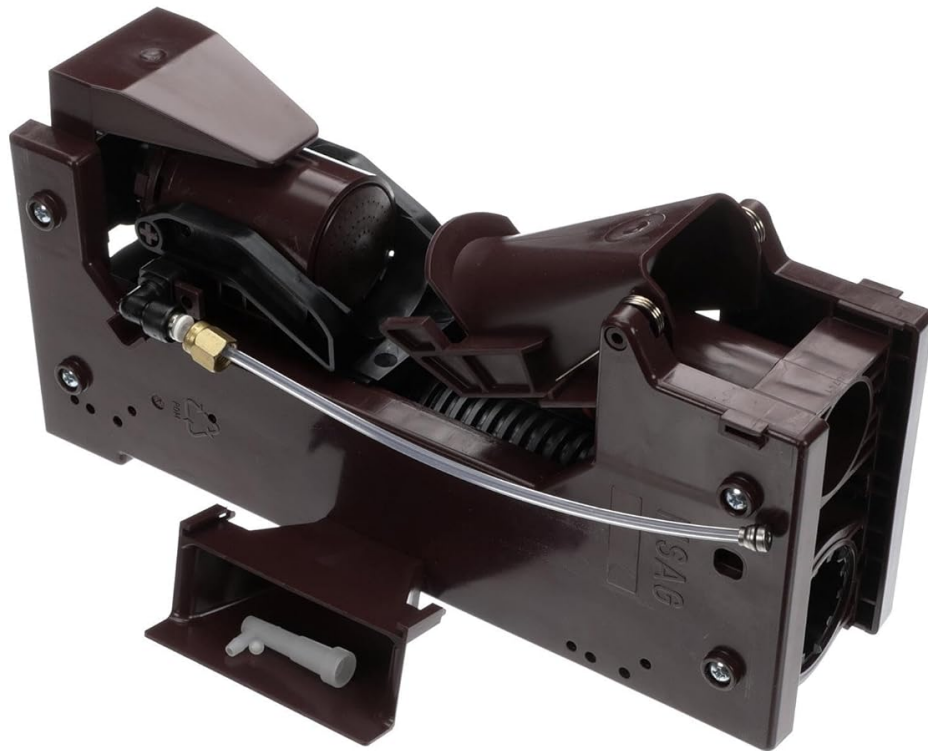
# Schaerer Brewing Unit Instruction Manual

Model: 3370061685

## INTRODUCTION

---

This manual provides essential information for the proper installation, operation, and maintenance of your Schaerer Preassembled Brewing Unit. This unit is a genuine OEM replacement part designed for specific Schaerer coffee machines. Adhering to the guidelines in this manual will help ensure the longevity and optimal performance of your brewing unit.



Front-left view of the Schaerer Preassembled Brewing Unit, showcasing its compact design and primary components.

## PRODUCT OVERVIEW

The Schaerer Brewing Unit is a critical component responsible for the brewing process within compatible Schaerer coffee machines. It is preassembled for ease of installation as a replacement part.



Rear-right view of the Schaerer Preassembled Brewing Unit, highlighting connection points and structural details.



Top-down view of the Schaerer Preassembled Brewing Unit, showing internal mechanisms and labeling.



Front-right view of the Schaerer Preassembled Brewing Unit, providing another perspective of its assembly.

## SETUP AND INSTALLATION

### Unpacking

Carefully remove the brewing unit from its packaging. Inspect the unit for any visible damage that may have occurred during transit. If damage is found, do not proceed with installation and contact your supplier.

### Installation (General Guidelines)

As an OEM replacement part, installation typically involves removing the old brewing unit and inserting the new one into the designated slot within your Schaerer coffee machine. **It is crucial to refer to your specific coffee machine's service manual for detailed, model-specific installation instructions.**

- Ensure the coffee machine is powered off and unplugged from the electrical outlet before beginning any installation or maintenance procedures.
- Locate the existing brewing unit within the machine, typically accessible through a service door.
- Carefully disconnect any hoses or electrical connections from the old unit, noting their positions for reattachment.

- Remove the old unit from its housing.
- Insert the new Schaerer Preassembled Brewing Unit, ensuring all connections are securely reattached and properly seated.
- Verify proper seating and alignment of the new unit within the machine's chassis.

## OPERATION

---

Once installed, the brewing unit operates as an integral part of your Schaerer coffee machine's automated brewing cycle. Its function is managed by the machine's control system, and no direct user interaction with the brewing unit itself is typically required during normal operation.

### Initial Function Check

After successful installation, power on the coffee machine. Perform a test brew cycle (e.g., a hot water dispense or a coffee brew without grounds) to check for proper water flow, absence of leaks, and any unusual noises. If any issues are observed, refer to the Troubleshooting section.

## MAINTENANCE

---

To ensure optimal performance, hygiene, and longevity of your brewing unit, regular cleaning and maintenance are essential. Always refer to your specific Schaerer coffee machine's user manual for detailed cleaning instructions.

### Regular Cleaning

- **Daily:** If your coffee machine allows for easy removal of the brewing unit, rinse it thoroughly with warm water daily to remove fresh coffee residues.
- **Weekly/Bi-weekly:** Perform a more thorough cleaning using a recommended coffee machine cleaning tablet or solution. Follow the instructions provided with your cleaning product and your coffee machine's manual for the cleaning cycle.
- **Monthly:** Inspect the unit for any stubborn coffee residue buildup, especially in hard-to-reach areas. Use a soft brush or cloth to gently remove any accumulation.

### Descaling

Depending on the hardness of your water, periodic descaling of your coffee machine (which includes the brewing unit) is necessary to prevent mineral buildup. Use only descaling agents approved by Schaerer or your coffee machine manufacturer. Follow the descaling procedure outlined in your coffee machine's manual.

## TROUBLESHOOTING

---

This section provides solutions to common issues you might encounter. For problems not listed here, or if the suggested solutions do not resolve the issue, please contact Schaerer customer support or a certified service technician.

### Common Issues

- **No Coffee Dispensed:**  
Check if the water tank is full and properly seated. Ensure the brewing unit is correctly installed and locked into place within the machine. Verify that coffee beans/grounds are present in the hopper/doser.
- **Weak Coffee:**

Verify that the correct amount of coffee grounds is being used according to your machine's settings. Ensure the brewing unit is clean and free of blockages that might impede proper water flow or coffee compaction.

• **Leaks:**

Immediately power off and unplug the machine. Check all connections to the brewing unit for proper sealing. Ensure O-rings and gaskets are intact and correctly positioned. If leaks persist, professional service may be required.

• **Unusual Noises:**

Minor operational noises during brewing are normal. However, if loud grinding, clunking, or squealing sounds occur, power off the machine and inspect the brewing unit for any obstructions (e.g., foreign objects, coffee bean fragments) or misalignments. Do not force the unit if it feels stuck.

**SPECIFICATIONS**

**Product Details**

Feature	Detail
Model Number	3370061685
Manufacturer	Schaerer
Product Dimensions	2 x 2 x 2 inches
Item Weight	1 Pound
Date First Available	October 13, 2021

**What's in the Box**







- 1 x Schaerer Preassembled Brewing Unit (Replacement Part)

**WARRANTY AND SUPPORT**

This Schaerer Brewing Unit is a genuine OEM part. For specific warranty information pertaining to this component, please refer to the warranty terms provided with your original Schaerer coffee machine or contact Schaerer customer service directly. Warranty coverage for replacement parts may vary.

For technical support, service inquiries, or to locate authorized service centers, please visit the official Schaerer website or contact their customer support channels.

[Schaerer Official Website](#)

	<p><a href="#">Schaerer Coffee Art Plus Touch User Manual</a></p> <p>User manual for the Schaerer Coffee Art Plus Touch espresso machine, covering operation, maintenance, and troubleshooting.</p>
	<p><a href="#">Schaerer Coffee Art Plus Daily Cleaning Instructions</a></p> <p>Detailed daily cleaning instructions for the Schaerer Coffee Art Plus coffee machine, including steam wand cleaning and general maintenance. Learn how to keep your machine clean and functioning optimally.</p>
	<p><a href="#">Schaerer Coffee Art C User Manual - Operation, Maintenance, and Warranty</a></p> <p>Comprehensive user manual for the Schaerer Coffee Art C coffee machine, covering operation, general overview, utility hook-up requirements, daily cleaning, error messages, troubleshooting, and warranty information.</p>
	<p><a href="#">Schaerer Coffee Art 1 Step Illustrated Parts Manual</a></p> <p>Official illustrated parts manual for the Schaerer Coffee Art 1 Step, Coffee Art Plus, and TOUCHIT/1-Step coffee machines, detailing components and part numbers for service and maintenance.</p>
	<p><a href="#">Schaerer Coffee Skye: Vielseitige Kaffeemaschine für jede Nische</a></p> <p>Entdecken Sie die Schaerer Coffee Skye, eine vielseitige und stilvolle Kaffeemaschine, ideal für Coffee Shops, Bäckereien und Catering. Bietet umfangreiche Anpassungsmöglichkeiten, einfache Wartung und Premium-Kaffee Genuss.</p>
	<p><a href="#">Schaerer Coffee Art C: Bean-to-Cup Commercial Coffee Machine Specifications and Features</a></p> <p>Explore the Schaerer Coffee Art C, a commercial bean-to-cup coffee machine offering hot and cold beverages. This document details its revolutionary brewing technology, key features, benefits, and comprehensive specifications for various models.</p>