

FLYLINKTECH CF600

FLYLINKTECH Car Jump Starter User Manual

Model: CF600

Brand: FLYLINKTECH

1. INTRODUCTION

The FLYLINKTECH CF600 Car Jump Starter is a portable, powerful device designed to start vehicles with dead batteries. It features a 1500A peak current, suitable for gasoline engines up to 8.0 liters and diesel engines up to 6.0 liters. Beyond its primary function, it also serves as a 16000mAh power bank for charging electronic devices and includes a multi-function LED light for various utility purposes. This manual provides essential information for safe and effective operation, maintenance, and troubleshooting of your jump starter.



Figure 1: FLYLINKTECH Car Jump Starter with smart clamps and charging cables.

2. SAFETY INFORMATION

Please read all safety warnings and instructions carefully before using this product. Failure to follow the warnings and instructions may result in electric shock, fire, and/or serious injury.

- Always ensure the jump starter is fully charged before use.
- Do not attempt to jump start a vehicle if the jump starter or cables are damaged.
- Connect the clamps correctly: Red clamp to positive (+) terminal, Black clamp to negative (-) terminal. Reverse polarity can cause damage.
- Do not connect the positive and negative clamps together.
- Keep out of reach of children.
- Do not expose the product to rain or wet conditions.
- Do not disassemble the unit. Refer all servicing to qualified personnel.
- Ensure the vehicle's ignition is off before connecting the jump starter.
- Remove the jump starter from the vehicle battery within 30 seconds after the engine starts.
- The device features **8 Smart Safe Clamp Protection**, including reverse polarity, overcharge, short circuit, high temperature, over voltage, and over current protection. However, always exercise caution.

INTELLIGENT CLAMPS WITH INDICATOR LIGHT AND BUZZER



Anti-reverse



Anti-high
temperature



Anti-high
voltage



Short-circuit
proof

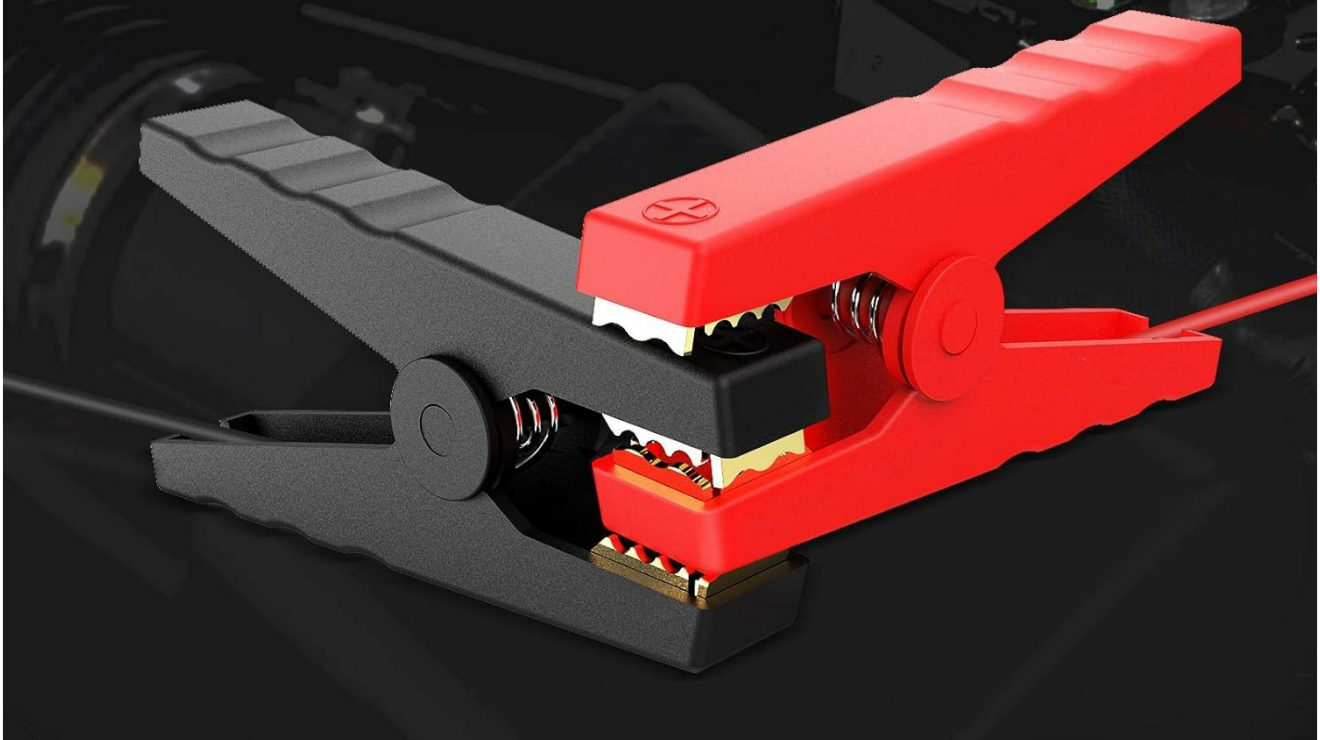


Figure 2: Intelligent clamps with built-in safety features for protection against common errors.

3. PACKAGE CONTENTS

Verify that all items are present in the package:

- FLYLINKTECH Car Jump Starter Unit
- Smart Jumper Clamps (Red and Black)
- USB Charging Cable
- EC5 Female Adapter
- User Manual (This document)
- Storage Case

4. PRODUCT OVERVIEW

The FLYLINKTECH Car Jump Starter is a versatile device designed for emergency vehicle starting and portable power.

Key Features:

- **Powerful Jump Starting:** 1500A peak current, capable of starting 12V vehicles with up to 8.0L gasoline or 6.0L diesel engines.
- **Portable Power Bank:** 16000mAh capacity with two USB ports, including one QC3.0 port for fast charging mobile phones, tablets, and other USB-powered devices.
- **Multi-Function LED Light:** Features Torch, SOS, Quick Flash, and Blue & Red Flashing modes for illumination and emergency signaling.
- **Smart Safety Clamps:** Equipped with 8 intelligent protections: reverse polarity, overcharge, short circuit, high temperature, over voltage, and over current.
- **EC5 Adapter and Safety Hammer:** Includes an EC5 female adapter for powering 12V car accessories (e.g., car cleaner, air pump) and a built-in safety hammer for emergency window breaking.
- **Compact and Lightweight:** Weighs approximately 1kg with dimensions of 18.5 x 9.5 x 4.5 cm, making it easy to store and carry.

PALM SIZE & LIGHTWEIGHT

WEIGHT: 1KG

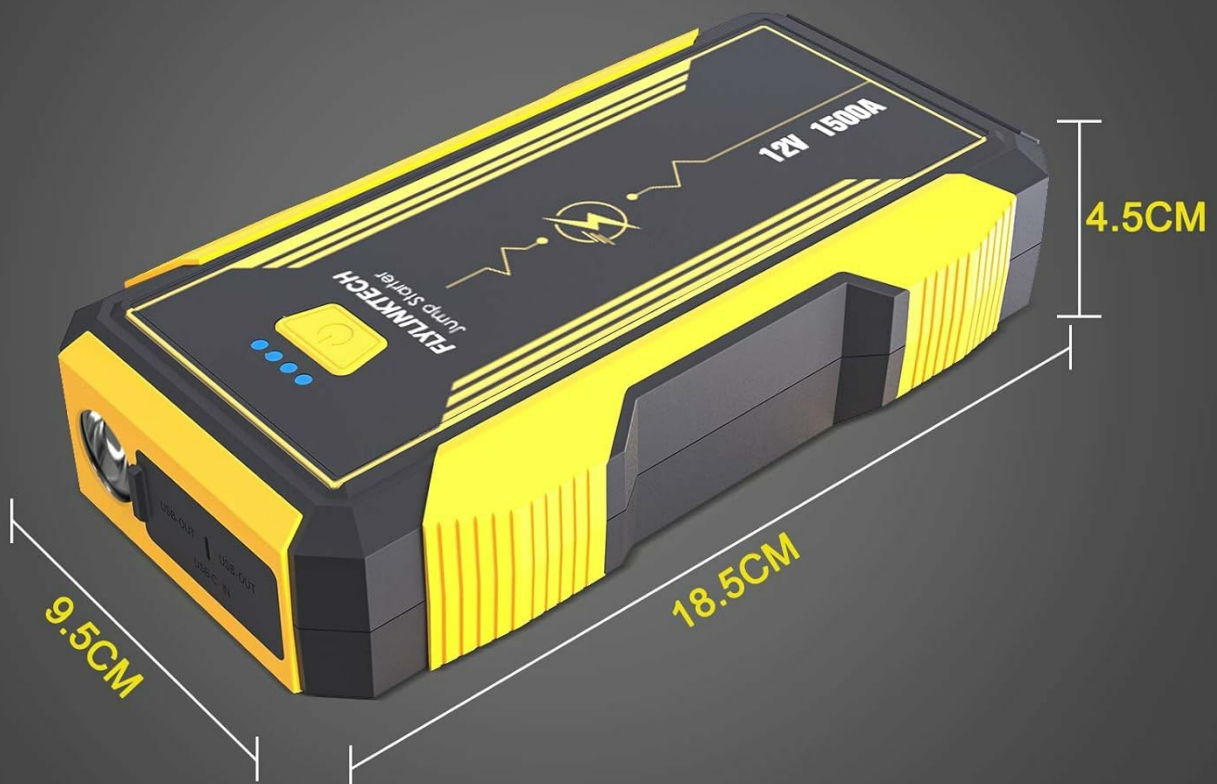


Figure 3: Compact dimensions and lightweight design of the jump starter.



Figure 4: Engine compatibility for the 1500A peak current jump starter.

5. SETUP AND INITIAL CHARGING

Before first use, fully charge the jump starter.

1. Connect the provided USB charging cable to the jump starter's input port.
2. Connect the other end of the USB cable to a 5V/2A or higher USB wall adapter (not included) or a computer USB port.
3. The LED indicator lights on the jump starter will illuminate to show the charging progress. All four lights will be solid when fully charged.
4. A full charge typically takes several hours. It is recommended to charge the unit every 3-6 months to maintain battery health, even if not in use.

6. OPERATING INSTRUCTIONS

6.1. Jump Starting a Vehicle

Ensure the jump starter is sufficiently charged (at least 3-4 indicator lights).

1. **Prepare the Vehicle:** Turn off the vehicle's ignition and all electrical loads (headlights, radio, air conditioning, etc.). Engage the parking brake.
2. **Connect Clamps to Jump Starter:** Insert the blue plug of the smart jumper clamps into the jump starting port on the jump starter unit. Ensure it is fully inserted. The indicator light on the clamps should flash green and red, indicating it's ready.
3. **Connect Clamps to Battery:**
 - Connect the **RED (+)** clamp to the positive (+) terminal of the vehicle's battery.
 - Connect the **BLACK (-)** clamp to the negative (-) terminal of the vehicle's battery.

If the connection is correct, the indicator light on the clamps will turn solid green. If it flashes red or beeps, check for reverse polarity or short circuit and correct the connection.

4. **Start the Vehicle:** Return to the vehicle and start the engine within 30 seconds.
5. **Remove Clamps:** Once the engine starts, immediately remove the clamps from the vehicle battery, then disconnect the clamps from the jump starter unit.

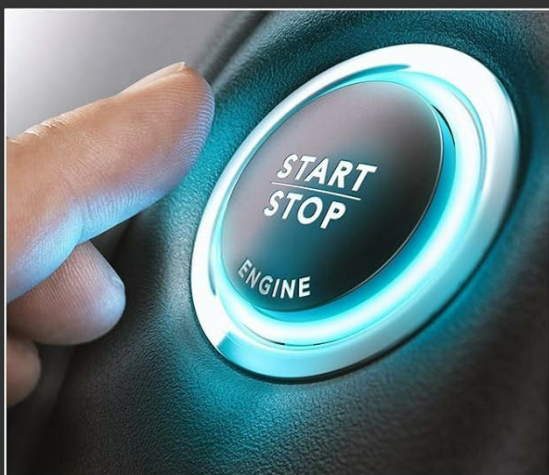
HOW TO START YOUR CAR



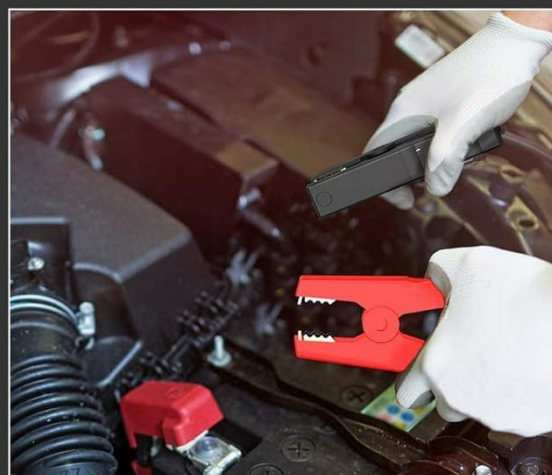
1.insert clamps into jump starting port



2.Connect clamp to car battery



3.Press the start button in your car in 30s



4.Remove clamps from battery

Figure 5: Step-by-step guide for jump starting a vehicle.

6.2. Using as a Power Bank

The jump starter can charge various electronic devices via its USB output ports.

1. Connect your device's USB charging cable to one of the USB output ports on the jump starter.
2. Connect the other end of the cable to your electronic device (e.g., smartphone, tablet, Bluetooth speaker).
3. The jump starter will automatically begin charging your device. The QC3.0 port offers faster charging for compatible devices.



Figure 6: The jump starter's power bank functionality and EC5 adapter use.

6.3. Using the LED Light

The built-in LED light offers multiple modes for different situations.

1. Press and hold the power button for 3 seconds to turn on the LED light (Torch mode).
2. Press the power button briefly to cycle through the modes: Torch → SOS → Quick Flash → Blue & Red Flash → Off.
3. Press and hold the power button again for 3 seconds to turn off the LED light from any mode.

MULTI-FUNCTION LED LIGHT



Figure 7: The multi-function LED light in operation, illustrating its various modes.

7. MAINTENANCE

Proper maintenance ensures the longevity and optimal performance of your jump starter.

- **Recharging:** Recharge the unit after each use. If not used frequently, recharge every 3-6 months to prevent deep discharge and extend battery life.
- **Cleaning:** Wipe the unit with a soft, dry cloth. Do not use harsh chemicals or abrasive cleaners.
- **Storage:** Store the jump starter in a cool, dry place, away from direct sunlight, moisture, and extreme temperatures. Keep it in its provided storage case for protection.
- **Battery Care:** The internal lithium-ion battery is not user-replaceable. Do not attempt to open the unit.

8. TROUBLESHOOTING

If you encounter issues with your FLYLINKTECH Car Jump Starter, refer to the following common problems and solutions:

Problem	Possible Cause	Solution
Jump starter does not turn on.	Battery is completely discharged.	Charge the jump starter fully.
Vehicle does not start after connecting.	<ul style="list-style-type: none">Clamps not connected properly.Vehicle battery is severely damaged.Jump starter not sufficiently charged.Vehicle engine size exceeds jump starter capacity.	<ul style="list-style-type: none">Ensure clamps are firmly connected to the correct battery terminals. Check smart clamp indicator light for solid green.Consult a professional mechanic.Recharge the jump starter.Verify your vehicle's engine displacement against the product specifications (8.0L Gas / 6.0L Diesel max).
Smart clamps indicator light flashes red or beeps.	Reverse polarity, short circuit, or other connection error.	Disconnect clamps immediately. Reconnect ensuring RED to (+) and BLACK to (-). Ensure clamps do not touch each other.
USB charging not working.	<ul style="list-style-type: none">Jump starter battery low.USB cable or device issue.	<ul style="list-style-type: none">Charge the jump starter.Try a different USB cable or device to isolate the problem.

9. SPECIFICATIONS

Feature	Detail
Model	CF600
Peak Output Current	1500 Amps
Battery Capacity	16000mAh (Lithium Ion)
Start Voltage	12V
Engine Compatibility	Up to 8.0L Gasoline, Up to 6.0L Diesel
USB Output 1	5V/2.4A, 12W
USB Output 2 (QC3.0)	5V/3A, 9V/2A, 12V/1.5A
DC Output (EC5 Adapter)	12-16V, 59.2W
Product Dimensions (LxWxH)	18.5 x 9.5 x 4.5 cm
Item Weight	1 kg

Note: Specifications are subject to change without notice.

10. WARRANTY AND SUPPORT





FLYLINKTECH products are manufactured to high-quality standards. For information regarding warranty coverage, technical support, or service inquiries, please refer to the warranty card included with your product or visit the official

FLYLINKTECH website.

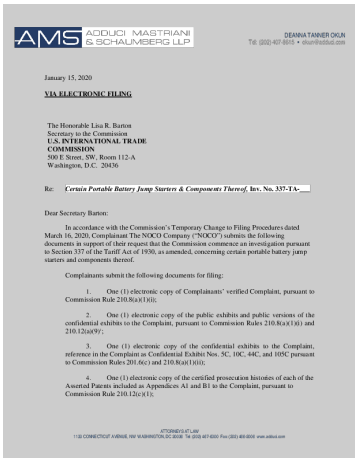
When contacting support, please have your product model number (CF600) and purchase details readily available.

© 2025 FLYLINKTECH. All rights reserved.
This manual is for informational purposes only.

Related Documents

	FLYLINKTECH Waterproof 12000mAh Jump Starter User Manual Comprehensive user manual for the FLYLINKTECH Waterproof 12000mAh Jump Starter. Learn about its key features, specifications, operation, safety guidelines, and troubleshooting for reliable vehicle jump-starting and device charging.
	FLYLINKTECH BD10 Jump Starter Power Bank User Manual Comprehensive user manual for the FLYLINKTECH BD10 Jump Starter Power Bank, detailing its features, operation, and safety guidelines. Learn how to use it as a jump starter, power bank, and LED flashlight.
	FLYLINKTECH BD20 Jump Starter Power Bank User Manual Comprehensive user manual for the FLYLINKTECH BD20 Jump Starter Power Bank, detailing product layout, operation guidance, charging, jump starting vehicles, troubleshooting, technical specifications, and warranty information. Includes safety warnings and disposal instructions.
	FLYLINKTECH CF900 Battery Jump Starter User Manual User manual for the FLYLINKTECH CF900 Battery Jump Starter. This guide provides instructions on product layout, operation, charging, parts list, technical specifications, FAQ, warnings, and warranty information.

Documents - FLYLINKTECH – CF600



[pdf] Confidentiality Request Letter

Jeremy L Miller January 15 2020 VIA ELECTRONIC FILING The Honorable NOCO s Boost® line of portable jump starters includes six models Sport™ 16 2019 starting with the GB50 model Though has moved away Compl itcblog images |||

DEANNA TANNER OKUN Tel: 202 407-8615 okun adduci.com January 15, 2020 VIA ELECTRONIC FILING The H 63 . S. Flylinktech 413. On information and belief, model numbers CF100, CF200, CF300, CF400, and **CF600** collectively, the Flylinktech Accused Products are manufactured outside the United States ...

lang:en score:11 filesize: 1.94 M page_count: 153 document date: 2021-01-15