

## SOAIY TDL-6110B

# SOAIY 60cm Dimmable LED Cabinet Light User Manual

Model: TDL-6110B

<a href="#">Introduction</a>	<a href="#">Features</a>	<a href="#">Package Contents</a>	<a href="#">Setup &amp; Installation</a>	<a href="#">Operation</a>
	<a href="#">Charging</a>	<a href="#">Specifications</a>	<a href="#">Troubleshooting</a>	<a href="#">Maintenance</a>

## 1. INTRODUCTION

Thank you for choosing the SOAIY 60cm Dimmable LED Cabinet Light. This manual provides detailed instructions for the proper setup, operation, and maintenance of your new LED light. Please read this manual thoroughly before use and retain it for future reference.

This versatile under-cabinet light is designed to provide optimal illumination for various indoor spaces such as kitchens, living rooms, bathrooms, workshops, and wardrobes. Its slim design and magnetic installation offer convenience and flexibility.

## 2. PRODUCT FEATURES

- **Three Operating Modes:** ON (continuous light), AUTO1 (motion sensor in darkness), and AUTO2 (motion sensor in both darkness and daylight).
- **Rechargeable Battery:** Equipped with a large 4500 mAh battery for extended use, rechargeable via a standard USB cable.
- **Easy Magnetic Installation:** Features built-in magnets for quick attachment to metal surfaces or non-metal surfaces using provided adhesive metal plates.
- **Adjustable Brightness and Color Temperature:** Offers 3 color temperatures (cool white, warm white, neutral white) and stepless dimming (30%-100%).
- **Memory Function:** Remembers the last brightness and color temperature settings.

- **Slim Design:** Ultra-flat 9mm profile with a sleek aluminum casing.

### 3. PACKAGE CONTENTS

Please check the package for the following items:

- SOAIY 60cm Dimmable LED Cabinet Light (Model: TDL-6110B)
- USB Charging Cable (1 meter)
- Self-adhesive Metal Plates for installation
- User Manual

### 4. SETUP & INSTALLATION

The SOAIY LED Cabinet Light offers flexible installation options without the need for screws or drilling.

#### 4.1 Components Overview

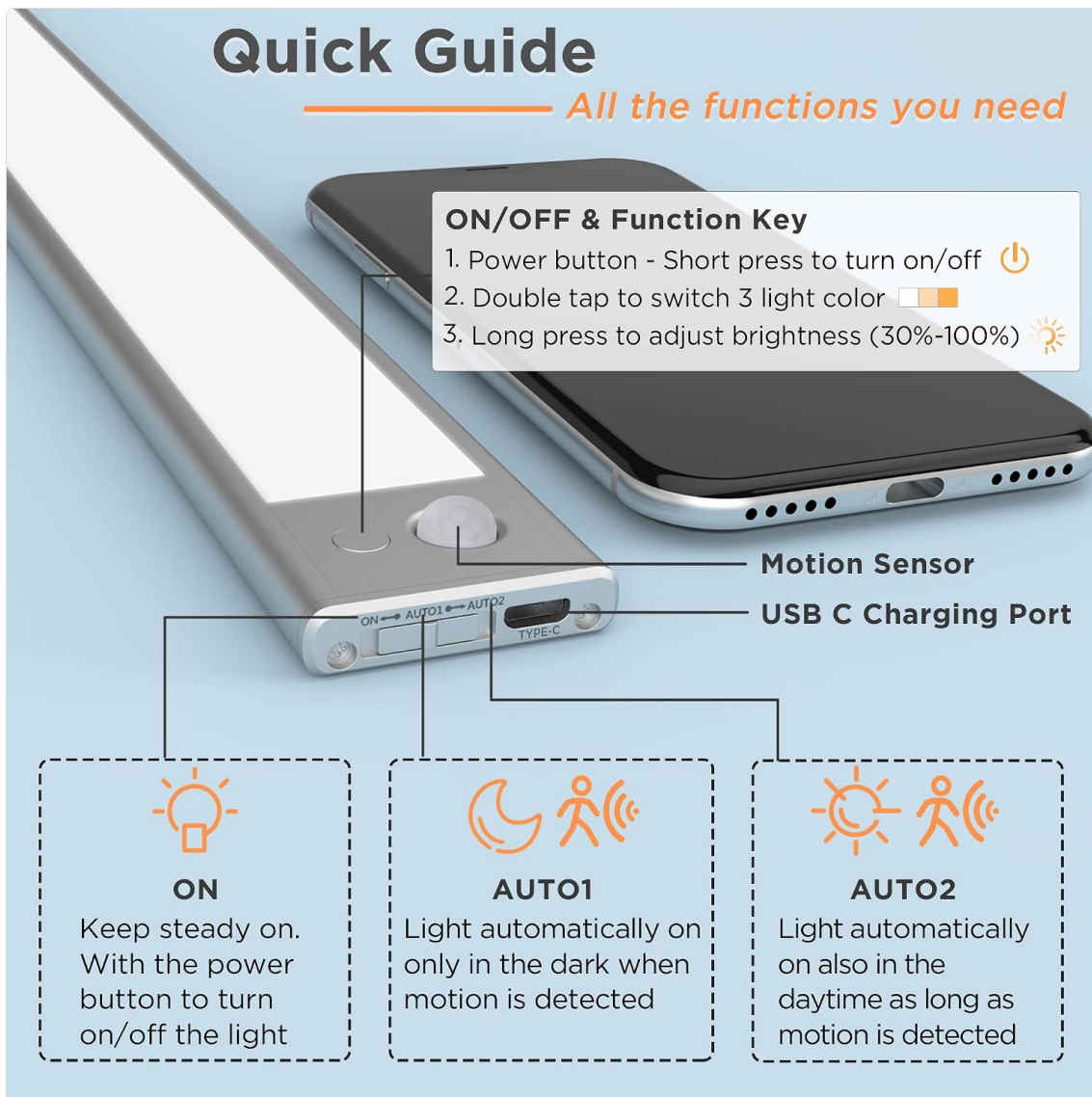


Figure 1: Overview of the LED light's main components, including the power button, motion sensor, and USB-C charging port. It also illustrates the ON, AUTO1, and AUTO2 modes.

- **Power Button / Function Key:** Controls power, color temperature, and brightness.

- **Motion Sensor:** Detects movement for automatic light activation.
- **USB C Charging Port:** For recharging the internal battery.

## 4.2 Installation Steps

The light features built-in magnets for easy attachment.

1. **For Metal Surfaces:** Simply attach the LED light directly to any magnetic metal surface. The built-in magnets will hold it in place.
2. **For Non-Metal Surfaces:**
  - Clean the desired installation area thoroughly to ensure it is free of dust and grease.
  - Peel off the protective film from one side of the self-adhesive metal plate.
  - Firmly press the adhesive side of the metal plate onto the cleaned surface.
  - Attach the LED light to the metal plate. The light's built-in magnets will secure it.



Figure 2: Illustration of the two installation methods: direct magnetic attachment to metal surfaces and using adhesive metal plates for non-metal surfaces.

The magnetic attachment allows for easy removal of the light for charging or repositioning.

## 5. OPERATING INSTRUCTIONS

Your SOAIY LED Cabinet Light features multiple operating modes and adjustable settings.

### 5.1 Power On/Off and Mode Selection

- **Short Press (Power Button):** Turns the light ON or OFF in continuous mode.
- **Double Click (Power Button):** Cycles through the 3 color temperatures: Cool White, Warm White, and Neutral White.
- **Long Press (Power Button):** Adjusts the brightness steplessly from 30% to 100%. Release and press again to change the dimming direction.



Figure 3: Demonstrates how to adjust the light's color temperature by double-clicking and brightness by long-pressing the power button.

### 5.2 Motion Sensor Modes (AUTO1 & AUTO2)

The light features a PIR motion sensor with a detection range of approximately 2-5 meters and a 120° angle.

# AUTO ON/OFF with PIR Motion Sensor



Figure 4: Visual representation of the PIR motion sensor's detection area and the conditions for AUTO1 (darkness only) and AUTO2 (daylight and darkness) modes.

- **AUTO1 Mode:** The light will automatically turn on when motion is detected, but **only in dark conditions**. It will turn off after approximately 15 seconds of inactivity.
- **AUTO2 Mode:** The light will automatically turn on when motion is detected, **even in daylight conditions**. It will turn off after approximately 15 seconds of inactivity.

To select AUTO1 or AUTO2 mode, use the small switch located near the USB charging port. The light will remember your last chosen brightness and color temperature settings in these modes.

## 6. CHARGING THE BATTERY

The SOAIY LED Cabinet Light is equipped with a built-in 4500 mAh rechargeable battery.

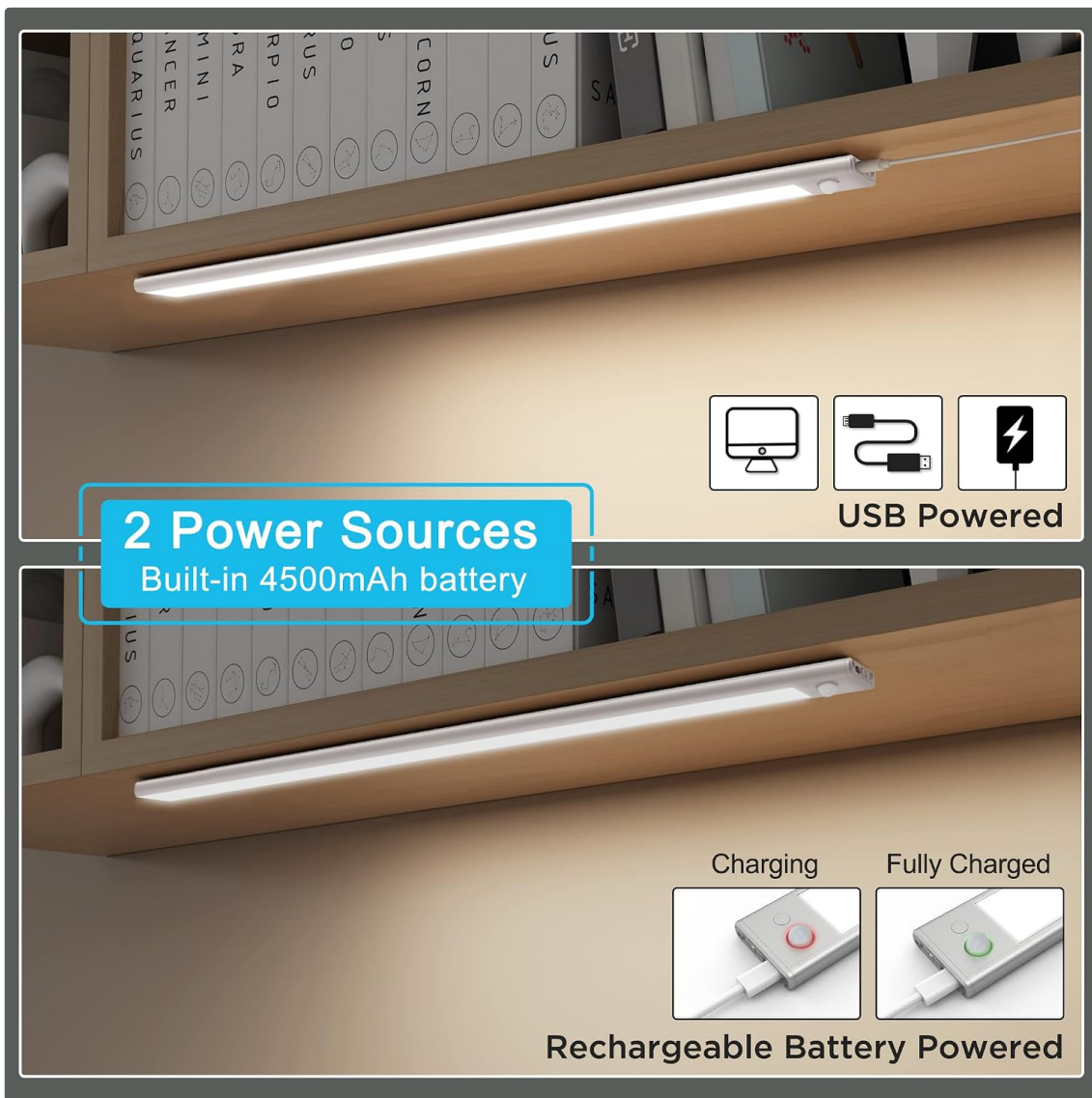


Figure 5: Illustrates the USB charging method and the charging indicator lights: red for charging and green for fully charged.

1. When the battery is low, the light's performance may diminish.
2. To charge, connect the provided 1-meter USB cable to the USB C charging port on the light.
3. Connect the other end of the USB cable to a 5V USB power source, such as a power bank, computer, laptop, or a wall adapter with a USB outlet.
4. A red indicator light will illuminate during charging.
5. Once fully charged, the indicator light will turn green.
6. Disconnect the charging cable once charging is complete.

For optimal battery life, avoid completely draining the battery frequently.

## 7. SPECIFICATIONS

Feature	Specification
Brand	SOAIY
Model Number	TDL-6110B

Feature	Specification
Dimensions (L x W x H)	60 x 4 x 0.9 cm
Weight	392 grams
Battery Capacity	4500 mAh
Color Temperatures	2700K (Warm White), 4000K (Neutral White), 6500K (Cool White)
Brightness Adjustment	Stepless dimming (30%-100%)
Motion Sensor Range	2-5 meters, 120° angle
Auto-off Time	Approx. 15 seconds (after no motion)
Power Source	Battery Powered (Rechargeable via USB)
Material	Polycarbonate, Aluminum
Intended Use	Indoor (Kitchen, Wardrobe, Cabinet, etc.)

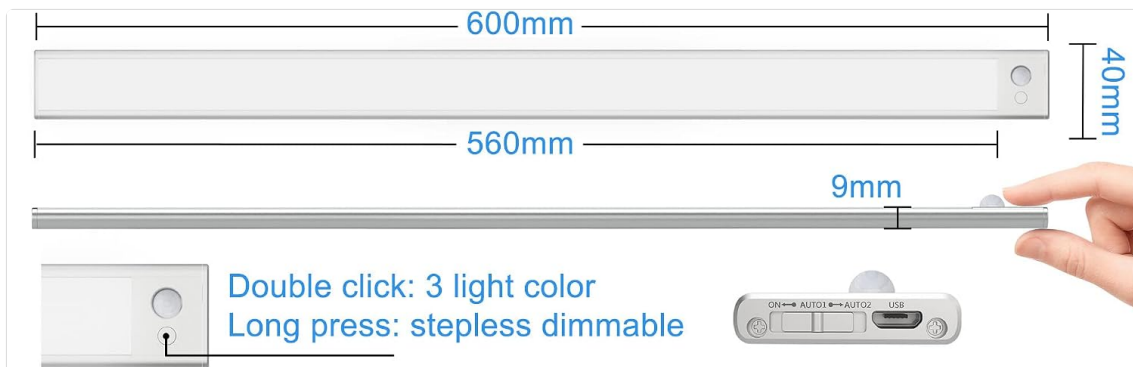


Figure 6: Detailed dimensions of the LED light (600mm length, 40mm width, 9mm thickness) and practical application examples in kitchen and wardrobe settings.

## 8. TROUBLESHOOTING

If you encounter any issues with your SOAIY LED Cabinet Light, please refer to the following common problems and solutions:

Problem	Possible Cause	Solution
Light does not turn on.	Battery is depleted. Light is in AUTO1 mode in a bright environment. Power button not pressed correctly.	Charge the light using the USB cable. Switch to AUTO2 mode or ON mode. Short press the power button firmly.
Motion sensor is not working.	Incorrect mode selected (e.g., AUTO1 in bright conditions). Obstruction blocking the sensor. Sensor range exceeded.	Ensure AUTO1 is used in dark environments or switch to AUTO2 for all conditions. Clear any objects in front of the sensor. Ensure movement is within 2-5 meters of the sensor.
Light falls off after installation.	Adhesive metal plate not properly secured. Surface not clean before adhesion. Magnets are weak (unlikely for new product).	Ensure the adhesive metal plate is pressed firmly onto a clean, dry surface. Clean the surface with alcohol and let it dry before applying the plate. Contact customer support if magnets are genuinely weak.
Brightness or color temperature cannot be adjusted.	Incorrect button press.	Double-click the power button to change color temperature. Long-press the power button to adjust brightness.

## 9. MAINTENANCE

To ensure the longevity and optimal performance of your LED light, follow these maintenance guidelines:

- **Cleaning:** Wipe the light with a soft, dry cloth. Do not use abrasive cleaners, solvents, or harsh chemicals, as these can damage the finish and electronic components.
- **Battery Care:** Recharge the battery regularly, especially if the light will not be used for an extended period. Avoid storing the light with a completely depleted battery.
- **Storage:** Store the light in a cool, dry place away from direct sunlight and extreme temperatures.
- **Avoid Water:** This product is designed for indoor use only and is not waterproof. Avoid exposure to water or high humidity.

## 10. WARRANTY AND SUPPORT

For warranty information or technical support, please refer to the documentation provided with your purchase or contact SOAIY customer service through the retailer where you purchased the product. Please have your model number (TDL-6110B) and purchase date ready when contacting support.

