

wavytalk QL-5917ADC

Wavytalk Ionic Hair Dryer QL-5917ADC Instruction Manual

Model: QL-5917ADC

1. PRODUCT OVERVIEW

The Wavytalk Ionic Hair Dryer QL-5917ADC is a powerful 1875W hair dryer designed for fast drying and frizz reduction. It incorporates ceramic technology and releases negative ions to promote smooth, shiny hair. This model includes three versatile attachments: a concentrator nozzle, a diffuser, and a comb nozzle, catering to various hair types and styling needs.



Image 1: Wavytalk Ionic Hair Dryer, Elegant Metallic Grey.

2. SAFETY INFORMATION

Please read all safety instructions before using this appliance to reduce the risk of electric shock, fire, and injury.

- This product includes safety features such as automatic shut-off at high temperatures to prevent overheating.
- Reduced electromagnetic wave technology minimizes radiation exposure.
- Do not use this appliance near water.
- Always unplug the appliance immediately after use.
- Keep away from children.
- Do not block air openings or place on a soft surface where air openings may be blocked.

3. SETUP AND ATTACHMENTS

Your Wavytalk Ionic Hair Dryer comes with three magnetic attachments for easy installation and removal.

Attaching/Removing Accessories:

1. Ensure the hair dryer is unplugged and cool before attaching or removing accessories.
2. Align the desired attachment (concentrator, diffuser, or comb nozzle) with the front of the hair dryer.
3. The magnetic connection will secure the attachment in place. Gently pull to remove.

DRIES 2X FASTER



Image 2: The Wavytalk hair dryer shown with its three included attachments: concentrator, diffuser, and comb nozzle.



Image 3: Visual guide for removing the comb attachment: hold the dryer in one hand, grip the comb attachment with the other, press the top of the comb downward, and pull it away.

4. OPERATING INSTRUCTIONS

The Wavytalk Ionic Hair Dryer features intuitive controls for customized styling.

Controls:

- **Power Switch:** Slide up or down to turn the dryer ON/OFF.
- **Airflow Speed Settings:** Adjust the fan speed (low/high) using the dedicated switch.
- **Temperature Settings:** Select from three temperature options (cool, warm, hot) to suit your hair type and styling needs.
- **Cool Shot Button:** Press and hold for a burst of cool air to set your style.

IONIC POWER

Leaves hair smooth, shiny, and frizz-free



Image 4: Detailed view of the hair dryer's control panel, showing switches for fan speed, temperature, and the cool shot button.

Using the Attachments:

- **Concentrator Nozzle:** Ideal for precision styling and smoothing sections of hair. Direct the airflow to specific areas.
- **Diffuser:** Use for curly or wavy hair to enhance natural texture and reduce frizz. Gently cup sections of hair in the diffuser and lift towards the scalp.
- **Comb Nozzle:** Perfect for straightening and detangling thick or unruly hair while drying.

1875W MOTOR

for Fast, High-Power Drying



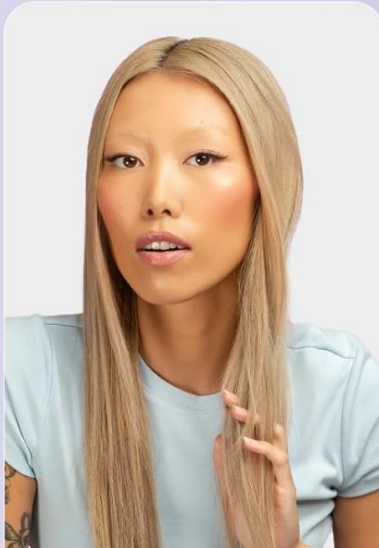
Image 5: A user demonstrating the diffuser attachment to define natural curls.

3 STYLING ATTACHMENTS



Comb Nozzle

Straightens smoothly while drying



Concentrator

Dries hair with precision



Diffuser

Defines natural curls and waves

Image 6: A user demonstrating the comb nozzle attachment for straightening hair.

5. MAINTENANCE

Regular cleaning ensures optimal performance and extends the life of your hair dryer.

Cleaning the Air Filter:

1. Ensure the hair dryer is unplugged and completely cool.
2. Gently twist or pull off the rear air filter cover.
3. Remove any accumulated lint, dust, or hair from the filter screen using a soft brush or cloth.
4. Replace the filter cover, ensuring it clicks securely into place.

6. TROUBLESHOOTING

If you encounter issues with your Wavytalk Ionic Hair Dryer, refer to the following common solutions:

- **No Power:** Ensure the power cord is securely plugged into a working electrical outlet. Check if the circuit breaker has tripped.

- **Overheating/Automatic Shut-off:** The dryer may have activated its automatic shut-off safety feature. Unplug the dryer, allow it to cool down for several minutes, and clean the air filter (see Maintenance section).
- **Weak Airflow:** A clogged air filter can restrict airflow. Clean the air filter as described in the Maintenance section.
- **Excessive Frizz:** Ensure you are using the ionic function (if applicable) and consider using the diffuser for curly hair.

If problems persist, please contact customer support.

7. SPECIFICATIONS

Feature	Specification
Product Dimensions	10.3 x 7.8 x 3.3 inches
Weight	1.6 Pounds
Model Number	QL-5917ADC
Manufacturer	wavytalk
Brand	wavytalk
Color	Elegant Metallic Grey
Material	Metal
Wattage	1875 watts
Power Source	Corded Electric

VERSATILE



Image 7: Visual representation of the hair dryer's dimensions, weight, air speed, and heat settings.

8. WARRANTY AND SUPPORT

For warranty information or customer support, please refer to the documentation included with your product or visit the official Wavytalk website. Keep your purchase receipt for warranty claims.