

## SMOOTHSKIN CA00-1739

SMOOTHSKIN  
IPL HAIR REMOVAL

# SMOOTHSKIN New Bare Fit IPL Permanent Hair Removal Device

Model: CA00-1739

## INTRODUCTION

---

The SMOOTHSKIN New Bare Fit IPL device is designed for permanent hair reduction through Intense Pulsed Light (IPL) technology. This home-use device offers a convenient and effective method for managing unwanted hair on various body areas. It is clinically tested and FDA cleared, ensuring adherence to safety and efficacy standards.

SMOOTHSKIN  
**bare**<sup>fit</sup>



SPEED

+



POWER

=

**FAST &  
EFFECTIVE  
HAIR REMOVAL**

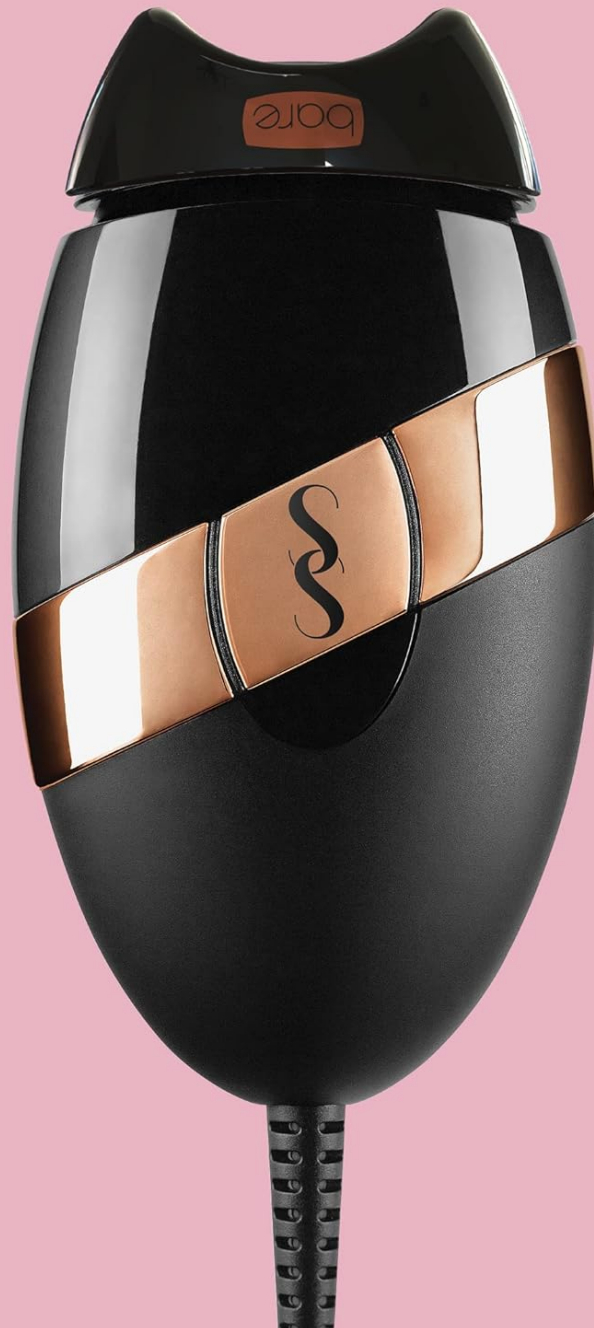


Image: The SMOOTHSKIN Bare Fit device highlighting its speed and power for effective hair removal.

Unlike temporary hair removal methods such as waxing, epilating, or shaving, the SMOOTHSKIN Bare Fit aims to provide long-term hair reduction by targeting hair follicles at the root. This manual provides essential information for safe and effective use of your device.

SMOOTHSKIN  
**bare<sup>fit</sup>**



**WAXING**  
***gets*** you smooth

**EPILATING**  
***gets*** you smooth



**SHAVING**  
***gets*** you smooth



**SMOOTHSKIN**  
***keeps*** you smooth

Image: A visual comparison illustrating how traditional methods like waxing, epilating, and shaving provide temporary smoothness, while SmoothSkin IPL offers lasting results.

## IMPORTANT SAFETY INFORMATION

---

Please read all safety instructions before using the SMOOTHSKIN New Bare Fit device. Failure to follow these instructions could result in injury or damage to the device.

- The device is equipped with unique safety sensors that measure your skin tone before each flash. It will only activate if it is safe for your skin type.
- Advanced UV filters are integrated to protect your skin from harmful rays during treatment.
- This device is FDA cleared and complies with international medical, ethical, and safety standards.
- Do not use on tattoos, dark brown or black spots (such as freckles, birthmarks, moles), or on skin that is naturally very dark.
- Avoid direct eye exposure to the IPL light. Always ensure the treatment window is fully in contact with the skin.
- Consult a medical professional if you have any pre-existing skin conditions or concerns.

## PACKAGE CONTENTS

---

Your SMOOTHSKIN New Bare Fit package should contain the following items:

- SMOOTHSKIN Bare Fit IPL Handset
- Precision Head (for smaller, trickier areas)
- Power Supply Unit
- User Manual (this document)



Image: The complete SMOOTHSKIN Bare Fit IPL hair removal device kit, including the main unit, precision head, and user guide, displayed with its retail packaging.

## DEVICE OVERVIEW

---



Familiarize yourself with the components of your SMOOTHSKIN Bare Fit device:

- **Treatment Window:** The area through which the IPL light is emitted.
- **Skin Tone Sensor:** Located around the treatment window, it detects your skin tone.
- **Activation Button:** Press to emit an IPL flash.
- **Power Inlet:** Where the power supply unit connects.
- **Precision Head:** A smaller attachment for treating delicate or hard-to-reach areas.



Image: A close-up view of the SMOOTHSKIN Bare Fit IPL device and its detachable precision head, showcasing their design and components.

## SETUP

---

1. **Unpack:** Carefully remove all components from the packaging.
2. **Connect Power:** Plug the power supply unit into the device's power inlet, then plug the power supply into a mains electrical outlet. The device will power on automatically.
3. **Prepare Skin:** Ensure the area you intend to treat is clean, dry, and shaved. Do not wax, epilate, or pluck hair, as the IPL needs the hair follicle to be present for effective treatment.
4. **Optional Precision Head:** If treating smaller areas, attach the precision head by gently clicking it onto the treatment window.

## OPERATING INSTRUCTIONS

---

## Treatment Preparation

- Shave the area to be treated.
- Cleanse the skin to remove any lotions, creams, or deodorants.
- Ensure your skin is completely dry.

## Performing a Treatment

1. **Position Device:** Place the treatment window firmly against your skin, ensuring full contact. The skin tone sensor lights will illuminate, indicating the device is ready.
2. **Activate Flash:** Press the activation button. A flash of light will be emitted. You may feel a warm tingle, which is normal.
3. **Move to Next Area:** Lift the device and move it to the next adjacent area. Overlap slightly to ensure full coverage.
4. **Treatment Modes:**
  - **Glide Mode:** For larger areas like legs. Hold down the activation button and slowly glide the device over your skin, ensuring continuous contact.
  - **Stamp Mode:** For smaller or bony areas. Place the device, press the button, release, then move to the next spot.



Image: A user demonstrating the application of the SMOOTHSKIN Bare Fit IPL device on the leg, illustrating proper technique for larger body areas.





Image: A user applying the SMOOTHSKIN Bare Fit IPL device to her face, demonstrating its use for smaller, more delicate areas.



Image: A user treating her underarm with the SMOOTHSKIN Bare Fit IPL device, showcasing its versatility for different body contours.

## Treatment Schedule

For visible hair reduction, follow the recommended treatment schedule:

- **Initial Phase:** Use the device once a week for 12 weeks.
- **Maintenance Phase:** After the initial 12 weeks, perform top-up treatments once a month or as needed to maintain results.

**SMOOTHSKIN barefit**

**IPL**  
10 minutes per week  
for 12 weeks –  
**then top ups  
every month**

**WAXING**  
30 minutes  
every 3 weeks

**SHAVING**  
5 minutes  
every day

**EPILATING**  
30 minutes  
every 3 weeks

Image: A graphic illustrating the recommended SMOOTHSKIN IPL treatment schedule (10 minutes per week for 12 weeks, then monthly top-ups) in contrast to the frequency required for waxing, shaving, and epilating.

## MAINTENANCE

Proper care ensures the longevity and optimal performance of your device:

- **Cleaning:** After each use, disconnect the device from the power outlet. Use a soft, dry cloth to wipe the treatment window and the device body. Do not use abrasive cleaners or immerse the device in water.
- **Storage:** Store the device in a cool, dry place, away from direct sunlight and out of reach of children.



## TROUBLESHOOTING

If you encounter issues with your SMOOTHSKIN Bare Fit device, refer to the following common problems and solutions:

Problem	Possible Cause	Solution
Device not flashing	<ul style="list-style-type: none"><li>Poor skin contact</li><li>Skin tone too dark for safe treatment</li><li>Device not properly plugged in</li></ul>	<ul style="list-style-type: none"><li>Ensure the treatment window is in full contact with the skin.</li><li>The skin tone sensor prevents flashing on unsuitable skin tones. Do not use on very dark skin.</li><li>Check power connections.</li></ul>
Device feels too warm	Normal operation, especially during prolonged use.	Take short breaks if needed. Ensure proper ventilation around the device. If it becomes uncomfortably hot, discontinue use and contact support.
No power	Power cable not connected or faulty outlet.	Check that the power cable is securely connected to both the device and the wall outlet. Try a different outlet.

If the problem persists after attempting these solutions, please contact customer support.

## SPECIFICATIONS



Feature	Detail
Model Number	CA00-1739
Manufacturer	CyDen Limited
Product Dimensions	13 x 7.5 x 4.5 cm
Item Weight	970 g
Energy Output	Up to 4J/cm <sup>2</sup> per flash
Technology	Intense Pulsed Light (IPL)
Safety Features	Skin tone sensor, Advanced UV filters
Regulatory Compliance	FDA Cleared

## WARRANTY AND SUPPORT

For warranty information, product support, or to report any issues, please refer to the official SMOOTHSKIN website or contact their customer service department. Keep your proof of purchase for warranty claims. You can often find support contact details on the manufacturer's website or within the product packaging.



### Related Documents

 The image shows the front cover of the 'SmoothSkin Pure Fit IPL User Guide'. It is a dark, textured cover with the 'smoothskin pure' logo in a light color at the top. Below the logo, the text 'IPL USER GUIDE' is visible.	<p><a href="#">SmoothSkin Pure Fit IPL User Guide</a></p> <p>Comprehensive user guide for the SmoothSkin Pure Fit IPL device, covering setup, usage, safety information, and benefits for permanent hair reduction.</p>
 The image shows the front cover of the 'SmoothSkin Pure Mini IPL User Guide'. It is a dark, textured cover with the 'smoothskin pure' logo in a light color at the top. Below the logo, the text 'IPL USER GUIDE' is visible.	<p><a href="#">SmoothSkin Pure Mini IPL User Guide</a></p> <p>Comprehensive user guide for the SmoothSkin Pure Mini IPL device, covering system overview, how it works, safety information, usage instructions, maintenance, and troubleshooting.</p>