

[Manuals.plus](#) /

> [Dibea](#) /

> Dibea G22 Dual Usage Cordless Vacuum and Mop Floor Cleaner User Manual

Dibea G22

Dibea G22 Dual Usage Cordless Vacuum and Mop Floor Cleaner User Manual

Model: G22 | Brand: Dibea





The Dibebe G22 Dual Usage Cordless Vacuum and Mop Floor Cleaner, a versatile cleaning appliance designed for efficient home maintenance.

1. INTRODUCTION

This manual provides essential information for the safe and effective operation, maintenance, and troubleshooting of your Dibebe G22 Dual Usage Cordless Vacuum and Mop Floor Cleaner. Please read this manual thoroughly before first use and retain it for future reference.

2. SAFETY INSTRUCTIONS

- Ensure the appliance is fully charged before initial use.
- Do not use the vacuum cleaner to pick up water or other liquids, flammable substances, or sharp objects.
- Keep hair, loose clothing, fingers, and all parts of the body away from openings and moving parts.
- Do not operate the appliance if it is damaged or malfunctioning. Contact customer support for assistance.
- Use only manufacturer-recommended attachments and accessories.
- Store the appliance in a dry, indoor location when not in use.
- This appliance is not intended for use by persons with reduced physical, sensory, or mental capabilities

unless supervised or instructed.

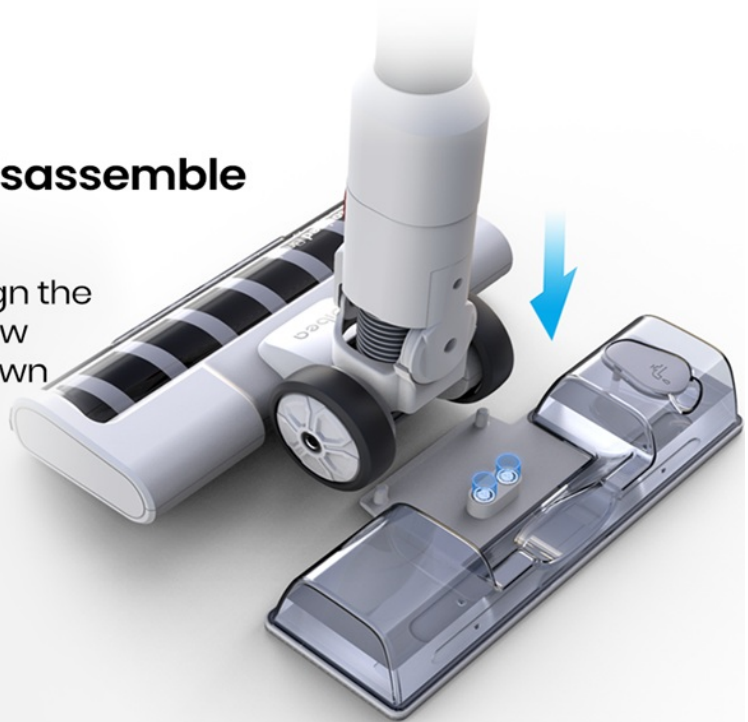
3. PACKAGE CONTENTS

Verify that all components listed below are included in your package:

- 1 x Dibeat G22 Main Machine
- 1 x Aluminum Tube
- 1 x Bend Tool
- 1 x Flexi Tool
- 1 x Adaptor
- 1 x Nozzle with Brush Tool
- 1 x Triangular Suction Tool
- 1 x Cleaning brush
- 1 x Mite Removal brush
- 1 x Wall mount (Hanger)
- 1 x Wall Screw/Sticker
- 1 x Magnetic Water Tank
- 1 x Brush Head
- 1 x Roller Brush
- 2 x Mopping Cloths
- 1 x User Manual

Magnetic Design Disassemble and Install Easily

Adjust the head brush, align the magnetic water tank below with a "click sound" as shown below picture.



The HD LED display shows various operational modes: Daily mode (blue), Strong mode (purple), Ultra Power mode (red), and an Airway block indicator (red).

4.2 Suction Power

The Dibe G22 features a powerful 29,000Pa suction, adjustable across three speeds to suit different cleaning requirements, effectively removing both large and small particles.

29000Pa Suction Power

Three-speed suction adjustment to cater to different households' needs. Powering by 29K PA under ultra power setting ensure removing all the large & small particles with a single button.



An illustration demonstrating the powerful 29,000Pa suction capability of the Dibeat G22, highlighting its effectiveness on various debris.

4.3 Smart Power Control System

The Smart Power Control System optimizes usage time across different modes:

- **Daily Mode:** Up to 48 minutes working time, suitable for normal dust and debris.
- **Strong Mode:** Up to 22 minutes working time, for dust with sticky substances and larger particles. Recommended for bed cleaning.
- **Ultra Power Mode:** Up to 10 minutes working time, for large surface dirt requiring quick removal. Avoid sharp objects.

Smart Power Control System

48min of usage time, easily to clean a large sized home



Daily Mode 48 min working time
Suitable for normal dust & debris



Strong Mode 22 min working time
Suitable for dust with some sticky substances and large particle that is difficult to remove. Recommended for bed cleaning



Ultra Power Mode 10min working time
Suitable for big surface dirt for quick removal effect. Dedicated to objects that are abnormally difficult to clean *Kindly prevent sharp and pierce objects

Make Our Life Better.

Dibea

A diagram illustrating the different power modes and their corresponding usage times for the Dibea G22.

4.4 Multi-Stage Filtration System

The appliance incorporates a multi-stage cyclone filtration system with additional cyclones for precise dust and air separation. Air is ventilated from the top, ensuring cleaner exhaust.

Multi Stage Filtration System, Separate Dust and Air Quickly



Added additional cyclones to ensure the separation of dust and air is more precise and systematic.

The dust is coming from the bottom and it ventilates a fresh and cleaner air at the top

Make Our Life Better.

Dibea

A cross-sectional view of the Dibe G22's multi-stage filtration system, showing the path of air and dust separation. It features a 0.5mm metal filter and an H13 high-grade HEPA filter, providing a filter effective rate of up to 99.7%. The fully sealed filtration outlet prevents secondary pollution.

Filter Effective Rate up to 9.7% 0.5mm Metal Filter +360° HEPA



Multi-stage cyclone filtration system,
0.5 mm metal filter + H13 high-grade HEPA filter.
Fully sealed filtration
outlet to ensure fresh air ventilation only.
Prevent secondary pollution effectively.

Make Our Life Better.

Dibea

A detailed view of the 0.5mm metal filter and 360° HEPA filter components within the Dibea G22.

4.5 High Efficiency Turbo Brush

The upgraded roller brush design effectively prevents particle spillage. Its dense and smooth surface helps to avoid hair tangling. Features include a double metal design for noise reduction and an internal independent motor for enhanced cleaning.

High Efficiency Turbo Brush

Upgraded design of roller brush with reasonable size control that can effectively prevent the spilled of particles.

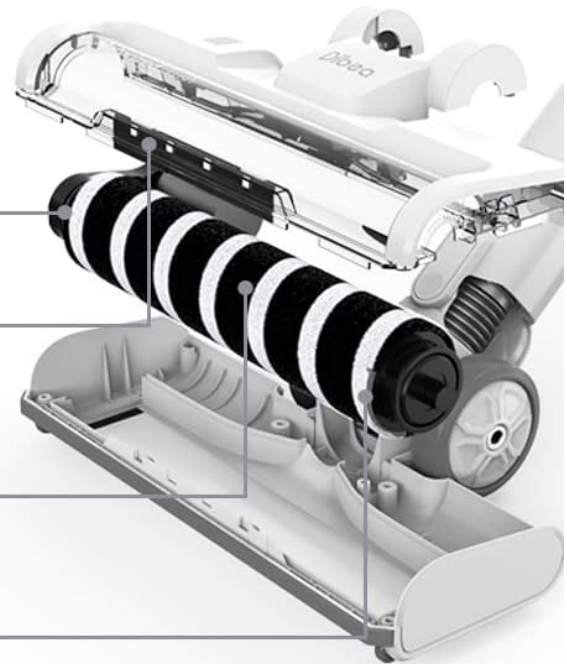
A dense and smooth surface helps to avoid the hair tangling problem.

Double metal design,
reduce the noise maximally

Internal independent motor

Dense and smooth surface design,
easily to collect the dust

Match with hard nylon wool,
improve cleaning effect



Make Our Life Better.

Dibeat

An exploded diagram of the Dibeat G22's high-efficiency turbo brush, detailing its internal motor, double metal design, and roller brush structure.

4.6 Powerful Motor and Energy Supply

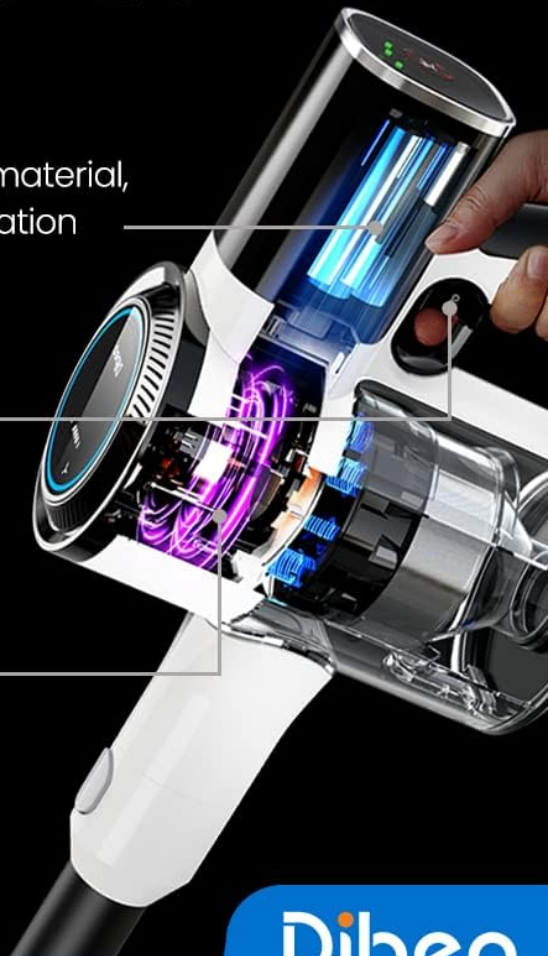
Powered by a 120,000 rpm speed-increasing motor, the G22 provides a stable and long-term operation. The intelligent power supply control ensures constant power output, and the optimized 9C battery cell allows continuous use without overheating.

Over 120,000 rpm speed-increasing motor, Powerful energy supply

Solid brushless build and lightweight material,
provides a stable and long term operation

Intelligent power supply control,
constant power output

Optimization on battery up to 9C
battery cell, continuous use
without heating issue



Make Our Life Better.

Dibe

An internal view of the Dibe G22's main unit, highlighting the 120,000 rpm brushless motor and the intelligent power supply system.

4.7 Dibe D.SOC 2.1 Integrated Chip

The Dibe D.SOC 2.1 integrated chip provides outstanding cleaning and control ability. This smart wind power control solution and chip optimization system improve the core kinetic energy of the power system, reducing battery system failure rates and maintaining stable cleaning performance.

Equipped with Three-in-one Smart Wind Power Integrated Chip

Dibea D.SOC 2.1 integrated chip

Outstanding cleaning and control ability, from Dibea's new integrated smart wind power control solution, integrated chip optimization system, effectively improving the core kinetic energy of the power system, reducing the failure rate of the battery system. With dual protection, the cleaning ability remains stable



Dibea Integrated
Chip



Dibea

Make Our Life Better.

A close-up diagram of the Dibea D.SOC 2.1 integrated chip, illustrating its role in smart power control and system optimization.

5. SETUP

5.1 Assembly

1. **Attach the Aluminum Tube:** Insert the aluminum tube into the main machine until it clicks securely into place.
2. **Attach the Brush Head:** Connect the desired brush head (e.g., Roller Brush) to the other end of the aluminum tube.
3. **Install Water Tank (for mopping):** If using the mopping function, attach the magnetic water tank to the brush head. Ensure it clicks into position.
4. **Charge the Appliance:** Connect the adaptor to the charging port on the main machine and plug it into a power outlet. The LED display will indicate charging status.

5.2 Wall Mount Installation

Use the provided wall mount and screws/sticker to secure the hanger in a convenient location for storage and charging.

6. OPERATING INSTRUCTIONS

6.1 Power On/Off and Mode Selection

Press the power button to turn the vacuum cleaner on. Use the mode selection button on the handle to cycle through Daily, Strong, and Ultra Power modes. The current mode will be displayed on the LED screen.

6.2 Vacuuming

Select the appropriate power mode for your cleaning task. Guide the vacuum cleaner across the desired surface. The LED lights on the turbo brush will illuminate dark areas for improved visibility.

6.3 Mopping Function

To use the mopping function, ensure the magnetic water tank is filled with water and attached to the brush head, and a mopping cloth is secured. The appliance will vacuum at the front and mop at the back simultaneously.



**Sweep and Vacuum Together
Clean Instantly**

Vacuuming at the front while mopping at the back.
Complete your daily cleaning in one step.

 Proper Water and
Leaking Control

Dibea

Make Our Life Better.

The Dibe G22 performing simultaneous vacuuming and mopping, illustrating the dual cleaning capability.

6.4 Using Attachments

The Dibe G22 comes with various attachments for specialized cleaning:

- **Bend Tool:** Allows cleaning under low furniture without bending down.
- **Flexi Tool:** For reaching tight spaces and corners.
- **Nozzle with Brush Tool:** Ideal for upholstery and delicate surfaces.
- **Triangular Suction Tool:** For specific corner or edge cleaning.
- **Mite Removal Brush:** Designed for deep cleaning mattresses and fabric surfaces to remove dust mites.

Interchangeable Multiple Attachments, Clean More Than Just Home



Carpet Dust Removal



Fabric Cleaning



Car & Crevice Cleaning



Bendable Cleaning

Make Our Life Better.

Dibeat

A collage of images demonstrating the versatility of the Dibeat G22 with various attachments for carpet, fabric, car, and bendable cleaning.

6.5 Mattress Deep Cleaning

Attach the Mite Removal brush for high-frequency deep cleaning of mattresses. This brush is designed to effectively remove dust mites and allergens, promoting a cleaner sleeping environment.

Mattress Deep Cleaning

The dust mite brush is made based on the standard bedding cleaning brush. It has an independent motor drive to provide a high-frequency deep cleaning. The small diameter adsorption design allows a good night's sleep steadily.



Make Our Life Better.

Dibea

The Dibea G22 being used with the mite removal brush for deep cleaning a mattress, highlighting its effectiveness against dust mites.

7. MAINTENANCE

7.1 Emptying the Dustbin

Regularly empty the dustbin to maintain optimal suction power. Press the release button to detach the dustbin and dispose of collected debris.

7.2 Cleaning Filters

The metal filter and HEPA filter should be cleaned periodically. Tap out loose dust and rinse with water if necessary. Ensure filters are completely dry before reinserting them into the appliance.

7.3 Cleaning Brush Heads

Remove any tangled hair or debris from the roller brush. The brush head can be detached for easier cleaning.

7.4 Water Tank and Mopping Cloths

After mopping, empty any remaining water from the magnetic water tank. Rinse the mopping cloths and allow them to air dry.

8. TROUBLESHOOTING

Problem	Possible Cause	Solution
No power	Battery is depleted; Charger not connected properly.	Charge the appliance fully; Ensure charger is securely connected.
Low suction power	Dustbin full; Filters clogged; Airway blocked.	Empty dustbin; Clean or replace filters; Check for blockages in the tube or brush head.
Brush head not rotating	Hair or debris tangled in brush; Brush head not properly attached.	Clean the roller brush; Reattach brush head securely.
Water tank leaking	Water tank not properly installed; Damaged water tank.	Ensure magnetic water tank is securely attached; Contact support if damaged.
LED display shows "Airway block"	Obstruction in the air path.	Check the main unit, tube, and brush head for any blockages and remove them.

9. SPECIFICATIONS

Feature	Specification
Model	Dibea G22
Item Weight	2.4 Kilograms
Form Factor	Stick
Power Consumption	420W
Suction Power	29,000 PA
Filter Type	Bagless, Multi-stage HEPA Filtration (H13)
Surface Recommendation	All floors
Power Source	Battery Powered
Voltage	12V
Is it cordless?	Yes
Dustbin Capacity	260 Milliliters
Special Features	HD LED Screen Display, Multi-stage HEPA Filtration System, Multiple Angle & Cleaning Attachments, Sweep & Mop 2 in 1, Ultra-high Suction Power

10. WARRANTY AND SUPPORT

The Dibeá G22 comes with a **2-year manufacturer's guarantee**. For warranty claims or technical support, please refer to your purchase documentation or contact the retailer where the product was purchased. Keep your proof of purchase for warranty validation.