



Manuals.plus /

› Skullcandy /

› Skullcandy Grind Fuel Wireless Earbuds User Manual

Skullcandy S2GFW-P740

Skullcandy Grind Fuel Wireless Earbuds User Manual

MODEL: S2GFW-P740

Product Overview

The Skullcandy Grind Fuel earbuds are designed for everyday use, offering premium sound, hands-free voice control, and a durable water/sweat-resistant build. They integrate Skull-iQ Smart Feature Technology for enhanced control and customization.

Key features include wireless charging, Skull-iQ Smart Voice Control, Tile Finding Technology for locating misplaced earbuds, Personal Sound customization, Adjustable Stay-Aware Mode, and up to 40 hours of total battery life with the charging case.



Image: Skullcandy Grind Fuel Earbuds in their open charging case, showcasing the black earbuds with orange interior accents.

Video: An official product video showcasing the features and design of the Skullcandy Grind Fuel True Wireless Earbuds.

Setup and Pairing

Power On/Off

To power on your Grind Fuel earbuds, simply open the charging case and remove them. They will automatically turn on. To power them off, place them back into the charging case and close the lid. They will automatically power down.

Initial Pairing

For first-time pairing, remove the protective stickers covering the charging points on both earbuds. Place them back in the charging case, ensuring both LEDs show red, and leave the lid open. While still

in the case, both earbuds will enter pairing mode.

Open your device's Bluetooth settings, find "Grind Fuel" in the list of available devices, and select it. Accept any pairing prompts. A voice prompt will confirm successful pairing.



Image: Front view of the Skullcandy Grind Fuel Earbuds, highlighting their compact design.

Operating Instructions

Skull-iQ Smart Feature Technology & App

Skull-iQ Smart Feature Technology enhances your listening experience by providing hands-free voice control and access to advanced features through the Skullcandy App. Download the Skullcandy App to unlock full functionality.

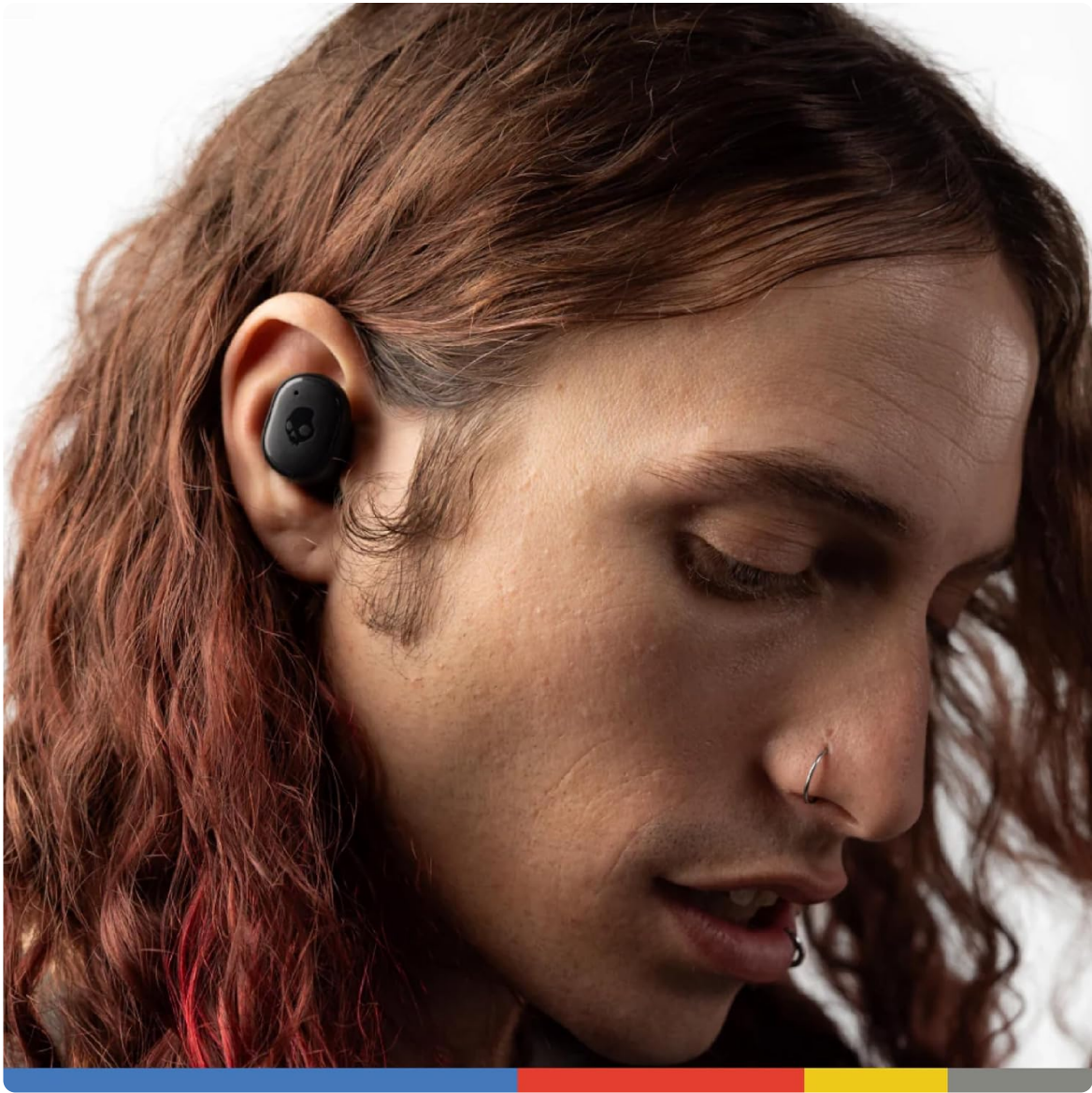


Image: A smartphone displaying the Skullcandy Skull-iQ App interface, showing options for Personal Sound and other features.

Voice Controls

Once enabled in the Skullcandy App, you can use voice commands for various functions. Simply say "Hey Skullcandy" followed by a command:

- "Play" / "Pause"
- "Volume Up" / "Volume Down"
- "Next" / "Previous" (for tracks)
- "Stay Aware On" / "Stay Aware Off"
- "Spotify" (to launch Spotify Tap)
- "Assistant" (to activate your device's voice assistant)

Basic Controls (Button Functions)

The earbuds also feature physical buttons for control:

- **Play/Pause:** Press either earbud once.
- **Volume Up:** Press the right earbud twice.
- **Volume Down:** Press the left earbud twice.

- **Take/End Call:** Press either earbud once.
- **Reject Call:** Press either earbud once.

Stay-Aware Mode

Stay-Aware Mode allows you to hear your surroundings without removing your earbuds. This is useful for maintaining awareness in busy environments. Enable or disable it via voice command or through the Skullcandy App.

Personal Sound

The Personal Sound feature in the Skullcandy App tunes your earbuds' audio output to your unique hearing profile, providing an optimized listening experience tailored specifically for you.

Spotify Tap

With Spotify Tap, you can instantly launch and control your Spotify playlist using a voice command or a customizable button press, providing quick access to your music.

Audio Sharing

Share your audio with another Skull-iQ enabled Skullcandy product user in real-time. Both users must have Skull-iQ enabled products, be in Bluetooth range, and be in stereo mode using both earbuds. The person sharing audio must have their earbuds connected to a device. The person joining must press and hold the button on their left earbud for 3 seconds.

Solo Mode

You can use either earbud independently. Simply remove one earbud from the charging case, and it will function normally. To use both earbuds again, remove the other earbud from the case, and they will automatically pair for stereo audio.

Charging Your Earbuds

The Grind Fuel earbuds offer both wireless and USB-C charging options. The earbuds provide up to 9 hours of playback on a single charge, and the charging case holds an additional 31 hours, for a total of 40 hours of listening time.

Charging Earbuds

Place the earbuds into the charging case. The LEDs on the earbuds will illuminate red to indicate they are charging. Once fully charged, the LEDs will turn blue.

Charging Case

Connect the included USB-C cable to the charging port on the case and to a power source. The LEDs on the case will indicate the charging status. Alternatively, place the charging case on a compatible wireless charging pad.

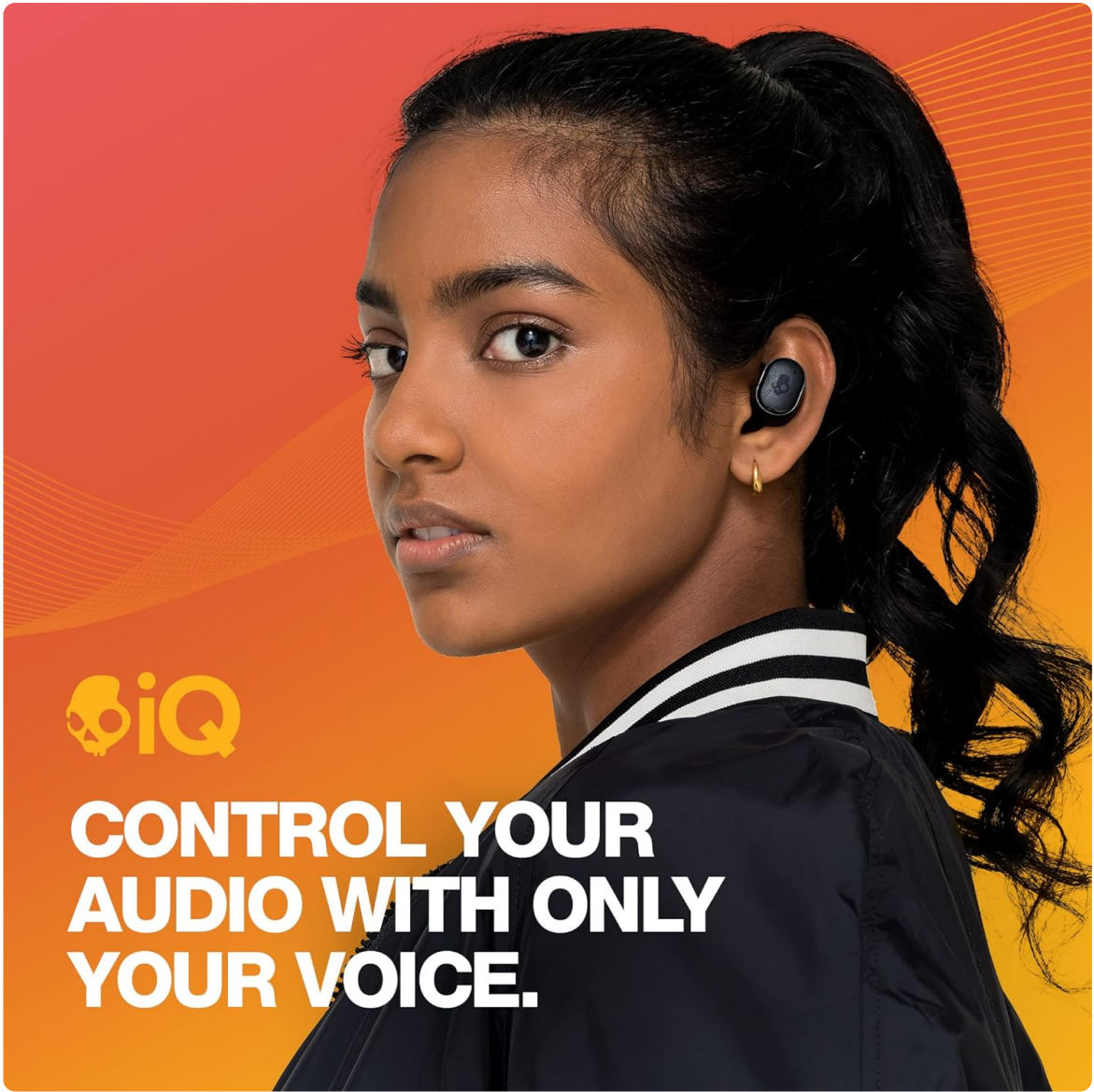


Image: Skullcandy Grind Fuel Earbuds resting in their open charging case, showing the charging indicator lights.



Image: The Skullcandy Grind Fuel charging case being wirelessly charged on a charging pad.

Care and Maintenance

The Skullcandy Grind Fuel earbuds are designed with an IP55 dust and water resistance rating, making them suitable for workouts and outdoor activities. This rating protects against sweat, light rain, and dust ingress.



Image: Close-up of a Skullcandy Grind Fuel earbud with water droplets, illustrating its water-resistant design.

Troubleshooting

If you experience connectivity issues or audio problems with your earbuds, try the following steps:

- **Re-link:** Power on both earbuds, disconnect them from your device's Bluetooth, then press the button on both earbuds three times simultaneously. This will initiate the re-linking process.
- **Reset:** If re-linking doesn't resolve the issue, you may need to reset your earbuds. Remove them from your device's Bluetooth paired list, then remove them from the case. Wait for a voice prompt, then press and hold the button on the right earbud for 3 seconds.
- **Skullcandy App:** For more detailed troubleshooting and support, refer to the Skullcandy App's user guide section.

Product Specifications

| Feature | Detail |
|-------------------------|---------------------------|
| Model Name | TW_GRIND |
| Item Model Number | S2GFW-P740 |
| Connectivity Technology | Bluetooth 5.0 |
| Noise Control | Sound Isolation |
| Battery Life | 40 Hours (with case) |
| Water Resistance Level | Water Resistant (IP55) |
| Control Type | Voice Control |
| Item Weight | 2.25 ounces |
| Product Dimensions | 4.72 x 1.97 x 2.36 inches |

Warranty and Support

The Skullcandy Grind Fuel Wireless Earbuds come with a 1-year US warranty.

For detailed instructions and further assistance, please refer to the official user manual PDF available [here](#).