

## Manuals+

[Q & A](#) | [Deep Search](#) | [Upload](#)

manuals.plus /

› [Mysoda](#) /

› [Mysoda Woody Sparkling Water Maker Instruction Manual \(Model WD002F-GGE\)](#)

## Mysoda WD002F-GGE

# Mysoda Woody Sparkling Water Maker Instruction Manual (Model WD002F-GGE)

Your guide to creating fresh sparkling water at home.

## 1. INTRODUCTION

---

Thank you for choosing the Mysoda Woody Sparkling Water Maker. This device allows you to transform ordinary tap water into refreshing sparkling water with ease. Crafted from renewable wood composite, the Woody model offers a quiet and efficient carbonation experience without requiring electricity. Please read this manual thoroughly before first use to ensure safe and optimal operation.



*Image: Mysoda Woody Sparkling Water Maker in sage green with a 1L water bottle and a glass of sparkling water with mint. This image displays the Mysoda Woody Sparkling Water Maker in sage green, accompanied by its clear 1-liter water bottle. A glass filled with ice, sparkling water, and fresh mint leaves is positioned next to the machine, illustrating its primary function.*

## 2. SAFETY INSTRUCTIONS

---

Adhering to these safety guidelines is crucial for preventing injury and damage to your device:

- Use only cold, clean tap water in the Mysoda water bottle. Do not carbonate any other liquids.
- Never remove the water bottle during the carbonation process. Wait until the carbonation sound has ceased.

- Keep the sparkling water maker out of reach of children.
- Only use genuine Mysoda water bottles with your device. Other bottles may not be compatible and could cause damage or injury.
- Do not wash the water bottle in hot water or a dishwasher, as this can damage the bottle and compromise its integrity. Hand wash with lukewarm water.
- Ensure the CO2 cylinder is securely installed before use. Refer to the CO2 cylinder installation section for proper procedure.
- Do not place the device near heat sources or in direct sunlight.
- Do not attempt to modify or repair the device yourself. Contact customer support for assistance.

### 3. PACKAGE CONTENTS

---

Upon unpacking, please verify that all items are present:

- 1 x Mysoda Woody Sparkling Water Maker (Model WD002F-GGE)
- 1 x 1-Liter Reusable Water Bottle

**Note:** The CO2 cylinder is sold separately and is not included in the package. The device is compatible with most common screw-in type CO2 cylinders.



Image: Diagram showing dimensions of the Mysoda Woody Sparkling Water Maker and listing package contents: machine and 1L reusable bottle. This diagram provides the physical dimensions of the Mysoda Woody Sparkling Water Maker, including its height (40.8 cm), width (13 cm), and base depth (24.5 cm). It also lists the package contents: one Woody sparkling water maker and one 1-liter reusable water bottle.

## 4. SETUP

### 4.1 Unpacking and Initial Cleaning

1. Carefully remove all components from the packaging.
2. Wash the reusable water bottle with lukewarm water and a mild detergent. Rinse thoroughly. Do not use hot water or a dishwasher.
3. Wipe the exterior of the sparkling water maker with a damp cloth.

### 4.2 CO2 Cylinder Installation

The Mysoda Woody uses standard screw-in type CO2 cylinders (not included).

1. Place the sparkling water maker on a flat, stable surface.

2. Remove the back cover of the device by gently pulling it outwards.
3. Screw the CO2 cylinder into the designated opening until it is firmly tightened. Do not overtighten.
4. Replace the back cover, ensuring it clicks securely into place.

## 5. OPERATING INSTRUCTIONS

---

Follow these steps to create sparkling water:

1. **Fill the Water Bottle:** Fill the Mysoda water bottle with cold tap water up to the indicated fill line.
2. **Insert and Lock the Bottle:** Insert the filled water bottle into the quick-lock system of the device. Turn the bottle to lock it securely in place. Push the bottle towards the device so it is fully upright.
3. **Carbonate the Water:** Press the carbonation button located on top of the device 2-3 times. Stop when you hear a distinct hissing sound, indicating sufficient carbonation.
4. **Remove and Enjoy:** Once carbonation is complete, gently twist the bottle to unlock and remove it from the device. You can now enjoy your freshly carbonated water or add your desired fruits or flavors.

# SILENT AND EASY TO USE WITH QUICK-LOCK MECHANISM

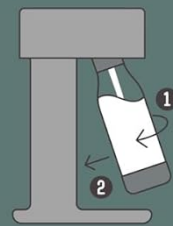
01

Fill the water bottle with cold water up to the fill line.



02

Insert the bottle into the quick-lock system, and turn to lock. Push the bottle towards the device so it is fully upright.



03

Press carbonation button 2-3 times, stop when you hear a hissing sound.



04

Enjoy your carbonated water or add your desired fruits/flavors.



button, enjoy. A visual guide detailing the four steps for operating the Mysoda Woody Sparkling Water Maker. Step 1 shows filling the bottle with cold water. Step 2 illustrates inserting and locking the bottle into the machine. Step 3 depicts pressing the carbonation button. Step 4 shows a person enjoying the carbonated water.

## 6. MAINTENANCE AND CLEANING

---

### 6.1 Cleaning the Device

- Wipe the exterior of the Mysoda Woody with a soft, damp cloth.
- Do not immerse the device in water or use abrasive cleaning agents.

### 6.2 Cleaning the Water Bottle

- Hand wash the Mysoda water bottle with lukewarm water and a mild dish soap.
- Rinse thoroughly and allow to air dry.
- Do not wash the bottle in a dishwasher or with hot water, as this can deform the plastic.

### 6.3 CO2 Cylinder Replacement

When the CO2 cylinder is empty (you notice less or no carbonation), replace it by following the installation steps in reverse:

1. Remove the back cover.
2. Unscrew the empty CO2 cylinder.
3. Insert a new, full CO2 cylinder and screw it in firmly.
4. Replace the back cover.

## 7. TROUBLESHOOTING

---

If you encounter issues with your Mysoda Woody, refer to the following common problems and solutions:

Problem	Possible Cause	Solution
No carbonation or weak carbonation	CO2 cylinder is empty or not properly installed.	Replace the CO2 cylinder or ensure it is screwed in tightly.
Water leaking during carbonation	Water bottle not properly inserted or filled above the line.	Ensure the bottle is locked securely and filled only to the fill line.
Bottle difficult to insert or remove	Mechanism might be misaligned or bottle is not positioned correctly.	Ensure the bottle is aligned with the quick-lock system before twisting. Do not force it.
Device making unusual noises	Loose components or internal issue.	Discontinue use and contact Mysoda customer support.

If the problem persists after attempting these solutions, please contact Mysoda customer support for further assistance.

## 8. SPECIFICATIONS

---

Detailed specifications for the Mysoda Woody Sparkling Water Maker (Model WD002F-GGE):

- **Model Name:** Mysoda Woody

- **Model Number:** WD002F-GGE
- **Capacity:** 1 Liter (water bottle)
- **Power Source:** Manual (no electricity required)
- **Operation Mode:** Automatic (carbonation mechanism)
- **Product Dimensions:** 9.5"D x 5.1"W x 16.1"H (24.1 cm D x 13 cm W x 40.9 cm H)
- **Item Weight:** 4.09 pounds (1.85 kg)
- **Material:** Wood composite
- **Manufacturer:** Mysoda Oy



*Image: Mysoda Woody Sparkling Water Maker highlighting its renewable wood composite material and noise cancellation feature. An image of the Mysoda Woody Sparkling Water Maker with text emphasizing its construction from renewable wood composite and its noise cancellation capabilities.*

## 9. WARRANTY AND SUPPORT

---

The Mysoda Woody Sparkling Water Maker comes with a 2-year limited warranty from the date of purchase. This warranty

covers defects in materials and workmanship under normal use.

For warranty claims, technical support, or any questions not addressed in this manual, please contact Mysoda customer support directly. Refer to the official Mysoda website for the most current contact information.

Please retain your proof of purchase for warranty purposes.